

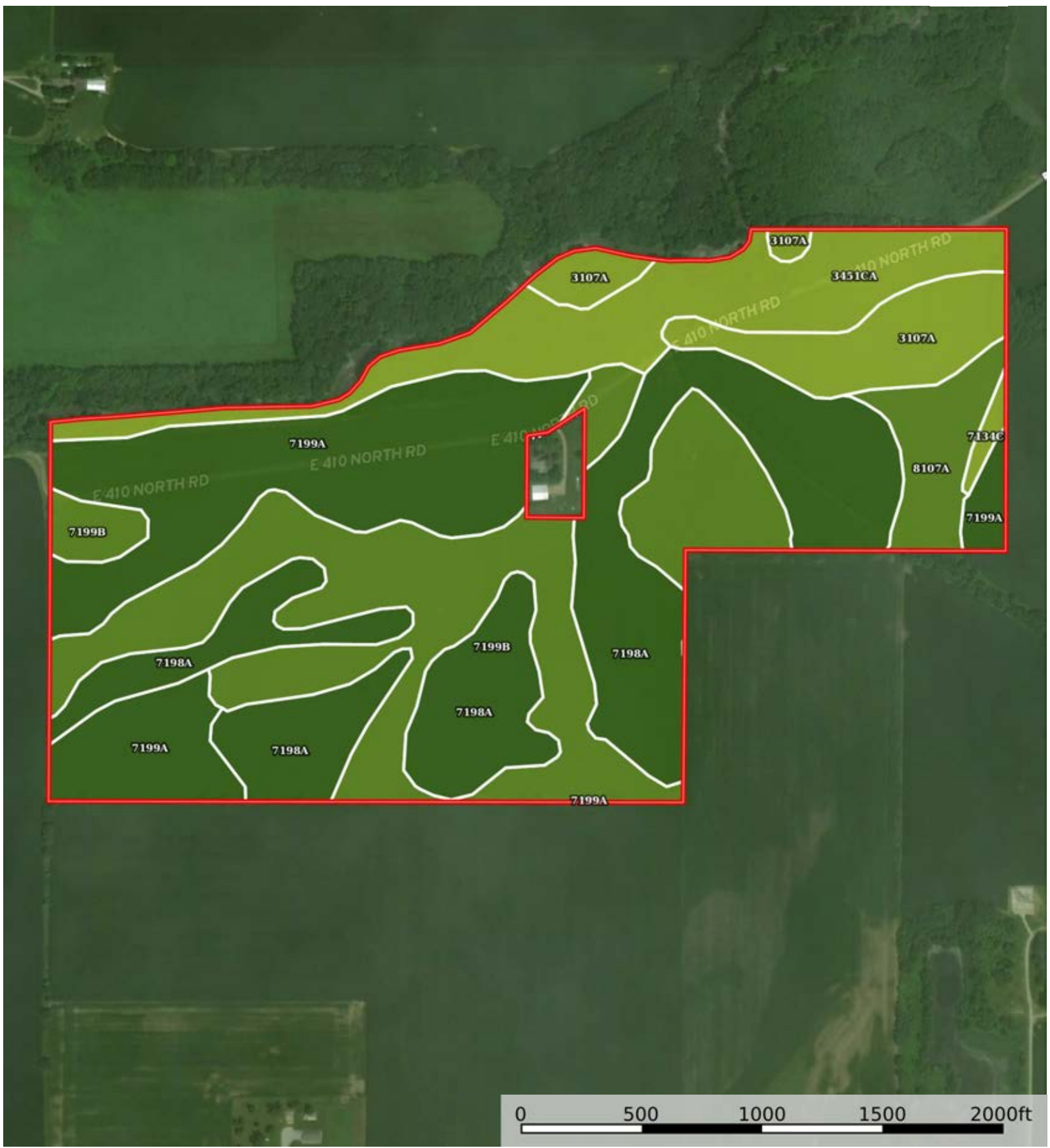
A-12694
De Witt County, Illinois, 147.38 AC +/-



 Boundary



 Boundary



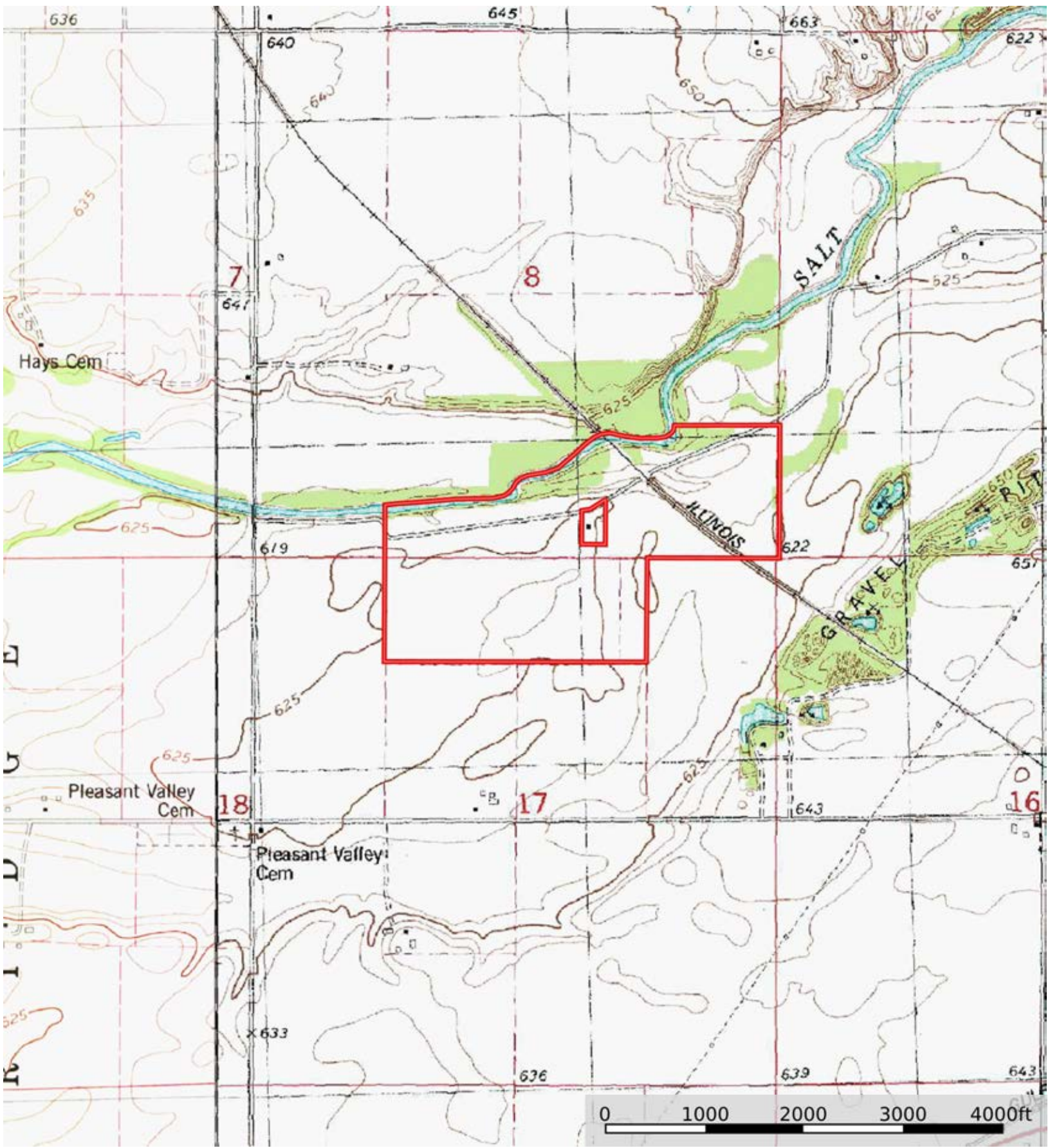
 Boundary

Boundary 152.48 ac

SOIL CODE	SOIL DESCRIPTION	ACRES	%	PI	NCCPI	CAP
7198A	Elburn silt loam, 0 to 2 percent slopes, rarely flooded	41.72	27.36	143	92	1
7199B	Plano silt loam, 2 to 5 percent slopes, rarely flooded	40.09	26.29	141	85	2e
7199A	Plano silt loam, 0 to 2 percent slopes, rarely flooded	34.14	22.39	142	91	1
3451cA	Lawson silt loam, cool mesic, 0 to 2 percent slopes, frequently flooded	18.89	12.39	126	87	3w
3107A	Sawmill silty clay loam, 0 to 2 percent slopes, frequently flooded	10.92	7.16	125	63	3w
8107A	Sawmill silty clay loam, 0 to 2 percent slopes, occasionally flooded	5.97	3.92	139	85	2w
7134C	Camden silt loam, 5 to 10 percent slopes, rarely flooded	0.75	0.49	115	86	3e
TOTALS		152.48(*)	100%	138.55	86.93	1.7

(*) Total acres may differ in the second decimal compared to the sum of each acreage soil. This is due to a round error because we only show the acres of each soil with two decimal.





 Boundary