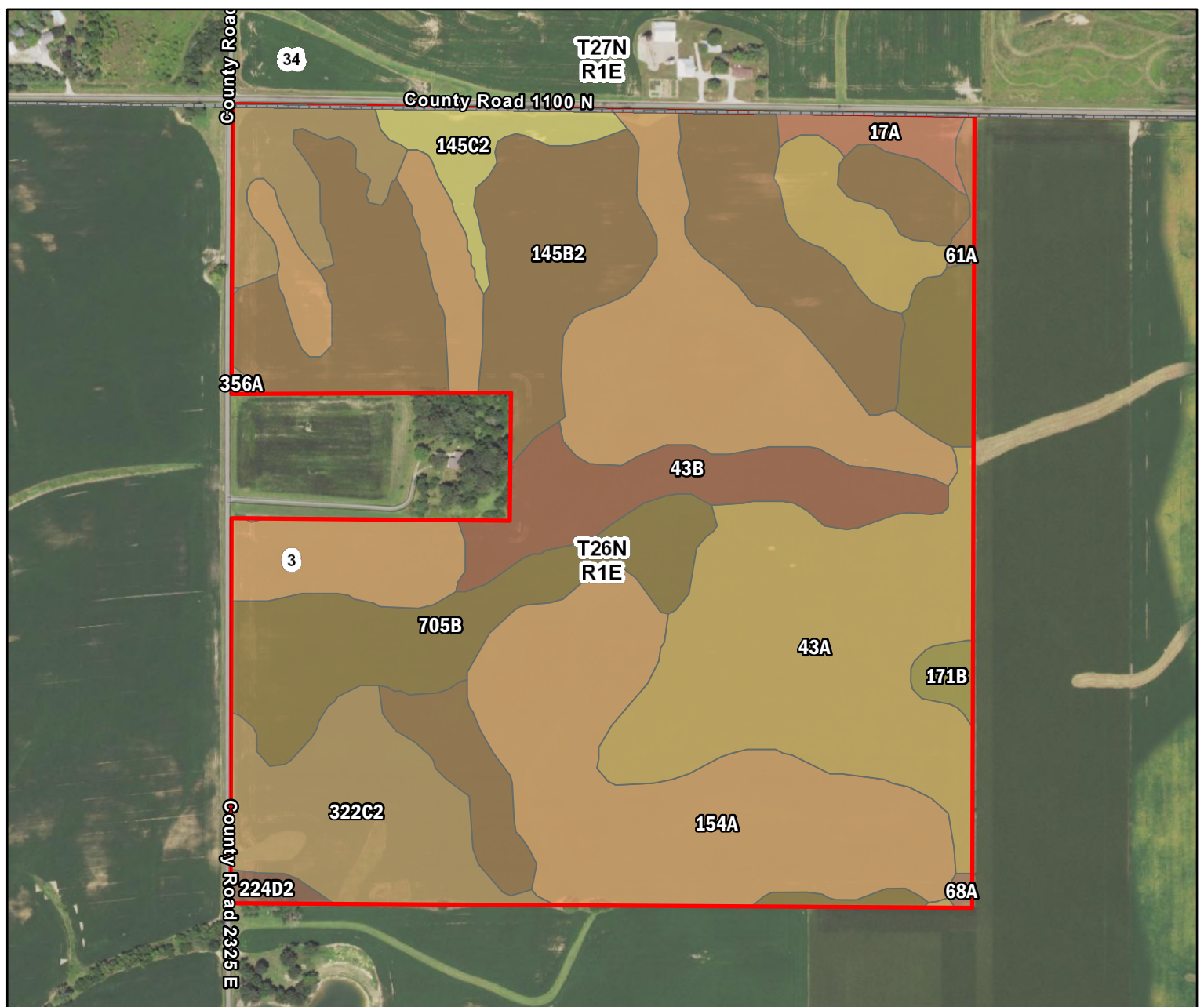


**Farm #12797**  
**TJC Trust**  
**Woodford County, Illinois**

Latitude: 40.7469°N  
Longitude: 89.0922°W  
Imagery Source: USDA NAIP  
Soil Data Source: USDA NRCS  
Boundaries are Approximate





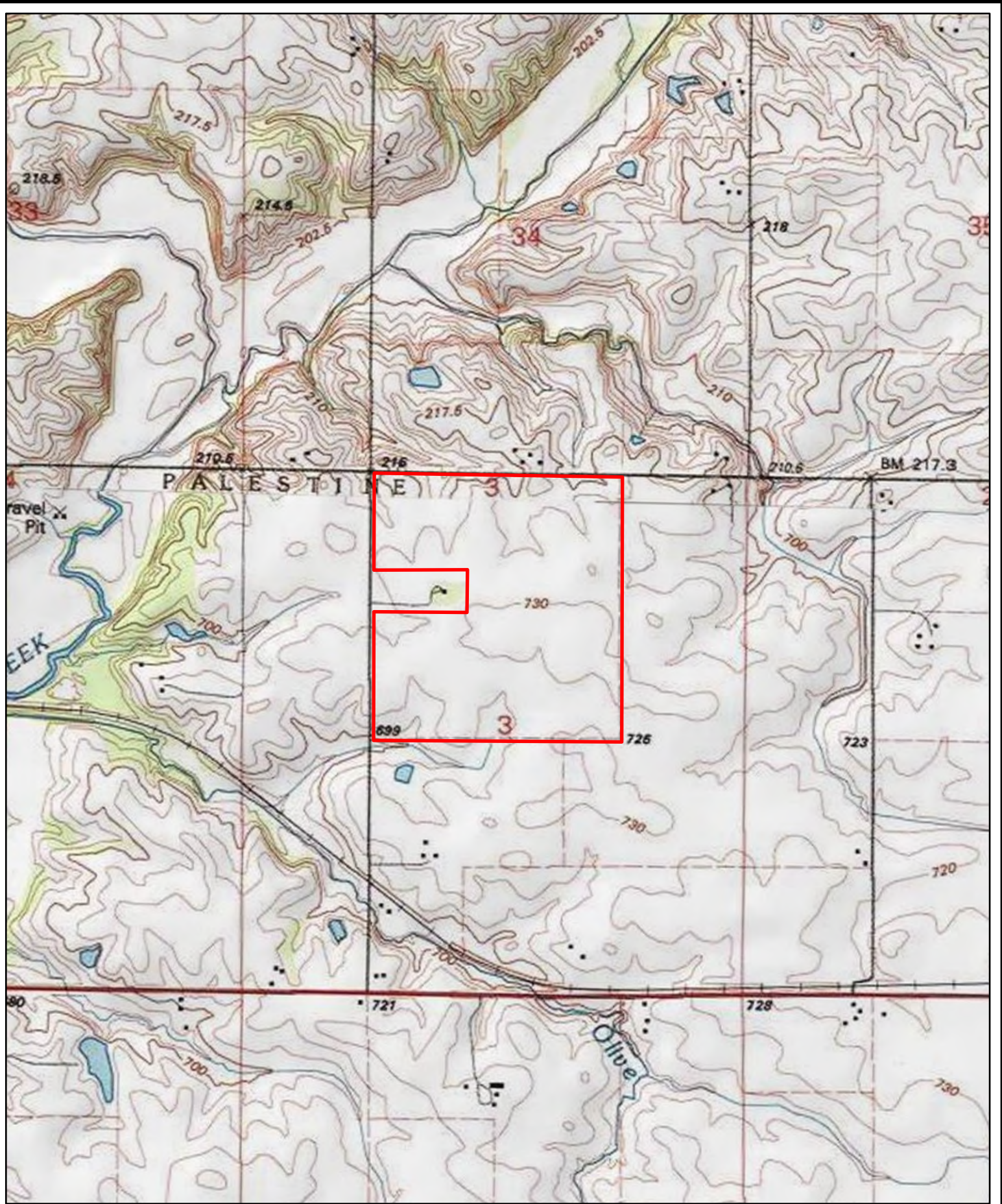
Map Symbol	Name	Non-IRR LCC	PRODUCTIVITY INDEX	CORN	BEANS	ACRES
154A	Flanagan silt loam, 0 to 2 percent slopes	1	144	194	63	48.7
145B2	Saybrook silt loam, 2 to 5 percent slopes, eroded	2e	124	168	54	33
43A	Ipava silt loam, 0 to 2 percent slopes	1	142	191	62	27
322C2	Russell silt loam, Bloomington Ridged Plain, 5 to 10 percent slopes, eroded	3e	108	149	47	15.7
705B	Buckhart silt loam, 2 to 5 percent slopes	2e	141	188	60	15.6
43B	Ipava silt loam, 2 to 5 percent slopes	2e	139	187	61	8.6
145C2	Saybrook silt loam, 5 to 10 percent slopes, eroded	3e	123	166	53	3.6
17A	Keomah silt loam, 0 to 2 percent slopes	2w	119	161	51	2
171B	Catlin silt loam, 2 to 5 percent slopes	2e	137	185	58	1
224D2	Strawn silt loam, 10 to 18 percent slopes, eroded	4e	91	122	41	0.7
61A	Atterberry silt loam, 0 to 2 percent slopes	2w	132	182	56	0.6
68A	Sable silty clay loam, 0 to 2 percent slopes	2w	143	192	63	0.2
356A	Elpaso silty clay loam, 0 to 2 percent slopes	2w	144	195	63	0.1
TOTAL			134.1	181	58.4	156.9



**Farm #12797**  
**TJC Trust**  
**Woodford County, Illinois**

Latitude: 40.7469°N  
 Longitude: 89.0922°W  
 Imagery Source: USDA NAIP  
 Soil Data Source: USDA NRCS  
 Boundaries are Approximate





**Farm #12797**  
**TJC Trust**  
**Woodford County, Illinois**

Latitude: 40.7469°N  
Longitude: 89.0922°W  
Imagery Source: USDA NAIP  
Soil Data Source: USDA NRCS  
Boundaries are Approximate