

County Road 2325 E

County Road 1100 N

County Road 2325 E

34

T27N  
R1E

3

T26N  
R1E

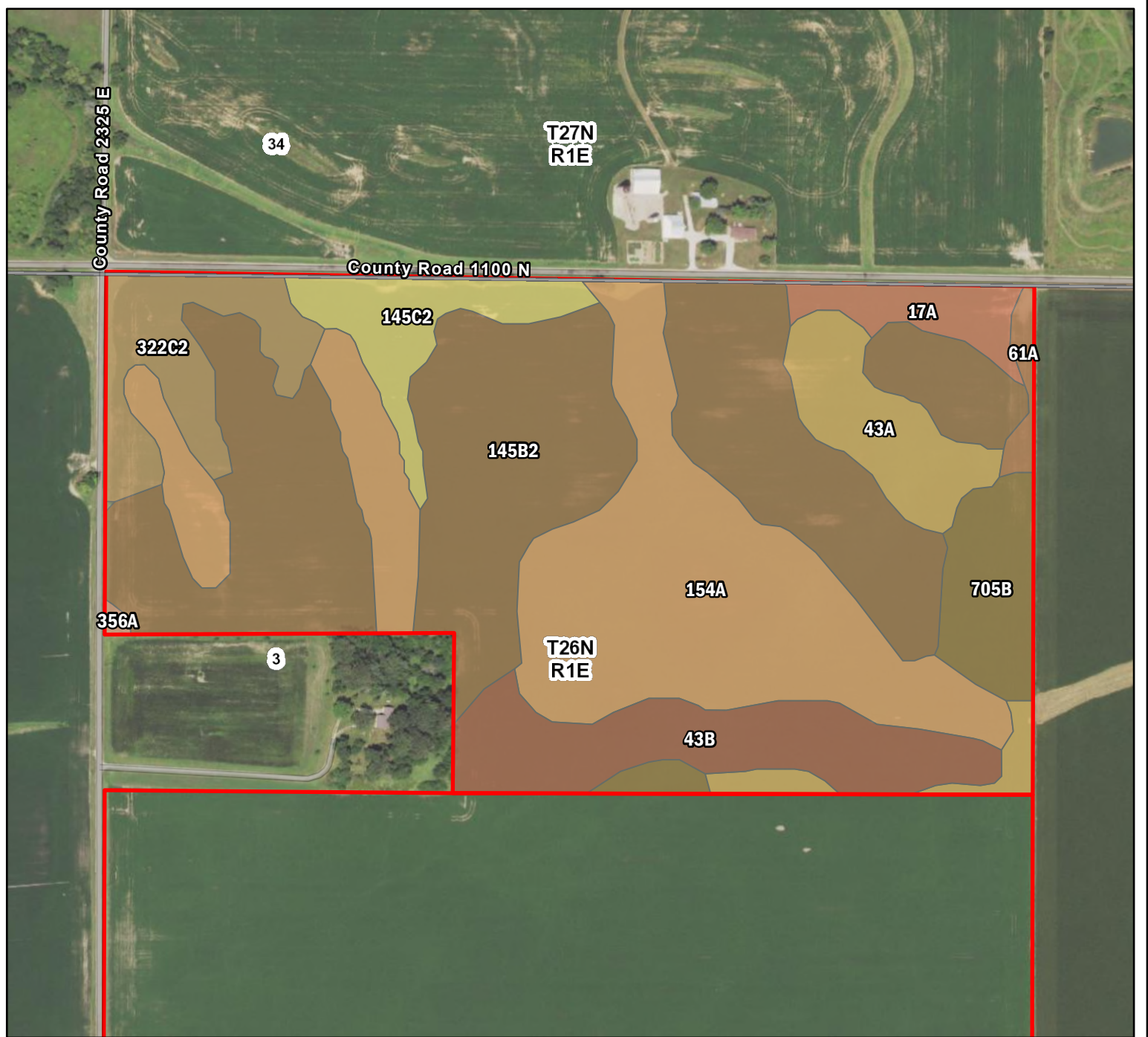
TRACT #1

TRACT #2



**Farm #12797**  
**TJC Trust**  
**Woodford County, Illinois**

Latitude: 40.7469°N  
Longitude: 89.0922°W  
Imagery Source: USDA NAIP  
Soil Data Source: USDA NRCS  
Boundaries are Approximate



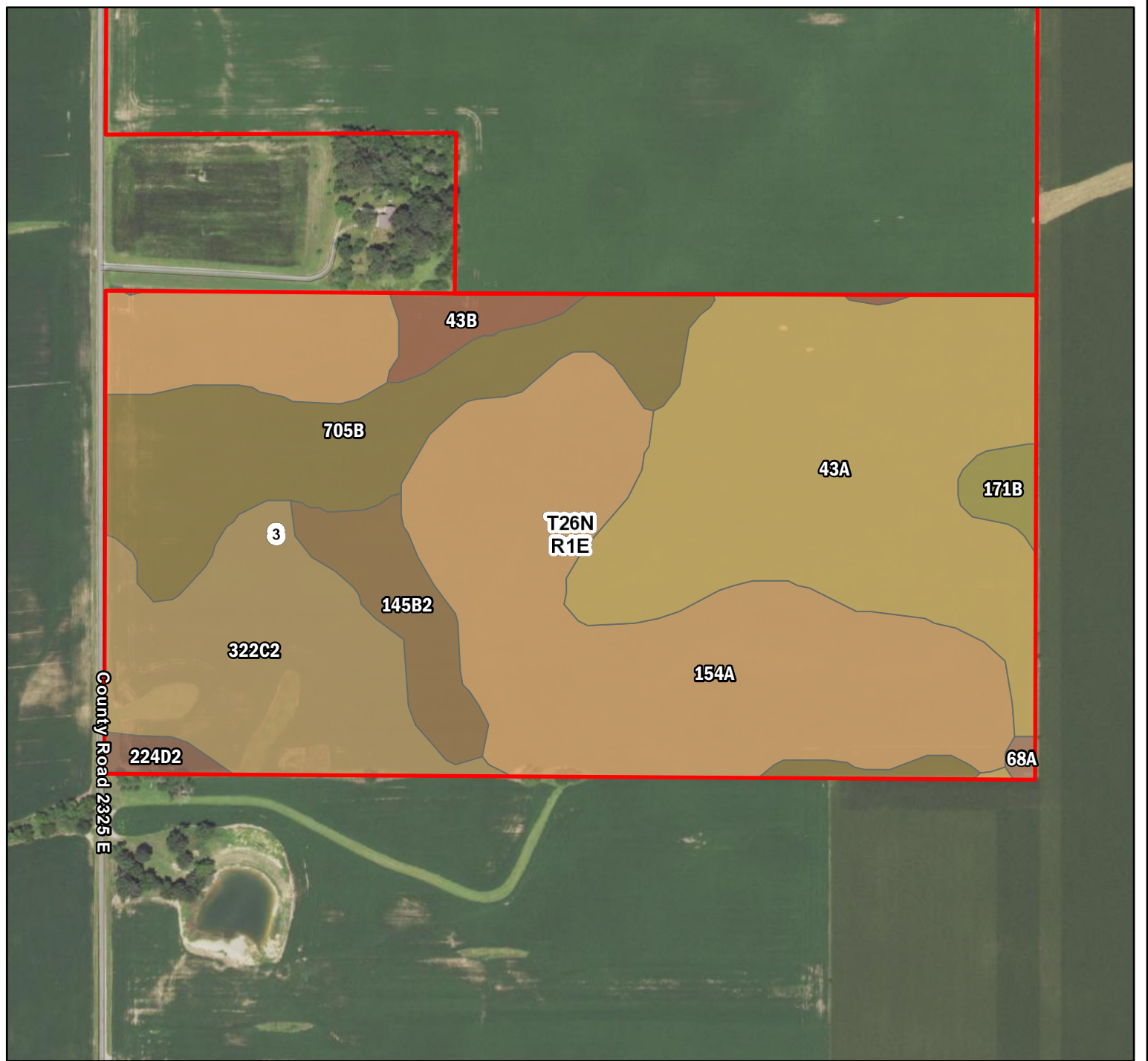
| Map Symbol | Name  | Non-IRR LCC | PRODUCTIVITY INDEX | CORN  | BEANS | ACRES |
|------------|---|-------------|--------------------|-------|-------|-------|
| 145B2      | Saybrook silt loam, 2 to 5 percent slopes, eroded                           | 2e          | 124                | 168   | 54    | 29.5  |
| 154A       | Flanagan silt loam, 0 to 2 percent slopes                                   | 1           | 144                | 194   | 63    | 20.1  |
| 43B        | Ipava silt loam, 2 to 5 percent slopes                                      | 2e          | 139                | 187   | 61    | 6.9   |
| 43A        | Ipava silt loam, 0 to 2 percent slopes                                      | 1           | 142                | 191   | 62    | 5     |
| 322C2      | Russell silt loam, Bloomington Ridged Plain, 5 to 10 percent slopes, eroded | 3e          | 108                | 149   | 47    | 4.6   |
| 705B       | Buckhart silt loam, 2 to 5 percent slopes                                   | 2e          | 141                | 188   | 60    | 3.8   |
| 145C2      | Saybrook silt loam, 5 to 10 percent slopes, eroded                          | 3e          | 123                | 166   | 53    | 3.6   |
| 17A        | Keomah silt loam, 0 to 2 percent slopes                                     | 2w          | 119                | 161   | 51    | 2     |
| 61A        | Atterberry silt loam, 0 to 2 percent slopes                                 | 2w          | 132                | 182   | 56    | 0.6   |
| 356A       | Elpaso silty clay loam, 0 to 2 percent slopes                               | 2w          | 144                | 195   | 63    | 0.1   |
| TOTAL      |   |             | 131.6              | 177.8 | 57.3  | 76.2  |



**Farm #12797**  
**TJC Trust**  
**Woodford County, Illinois**

Latitude: 40.7488°N  
 Longitude: 89.0922°W  
 Imagery Source: USDA NAIP  
 Soil Data Source: USDA NRCS  
 Boundaries are Approximate





| Map Symbol | Name  | Non-IRR LCC | PRODUCTIVITY INDEX | CORN  | BEANS | ACRES |
|------------|---|-------------|--------------------|-------|-------|-------|
| 154A       | Flanagan silt loam, 0 to 2 percent slopes                                   | 1           | 144                | 194   | 63    | 28.6  |
| 43A        | Ipava silt loam, 0 to 2 percent slopes                                      | 1           | 142                | 191   | 62    | 22.1  |
| 705B       | Buckhart silt loam, 2 to 5 percent slopes                                   | 2e          | 141                | 188   | 60    | 11.8  |
| 322C2      | Russell silt loam, Bloomington Ridged Plain, 5 to 10 percent slopes, eroded | 3e          | 108                | 149   | 47    | 11.1  |
| 145B2      | Saybrook silt loam, 2 to 5 percent slopes, eroded                           | 2e          | 124                | 168   | 54    | 3.5   |
| 43B        | Ipava silt loam, 2 to 5 percent slopes                                      | 2e          | 139                | 187   | 61    | 1.7   |
| 171B       | Catlin silt loam, 2 to 5 percent slopes                                     | 2e          | 137                | 185   | 58    | 1     |
| 224D2      | Strawn silt loam, 10 to 18 percent slopes, eroded                           | 4e          | 91                 | 122   | 41    | 0.7   |
| 68A        | Sable silty clay loam, 0 to 2 percent slopes                                | 2w          | 143                | 192   | 63    | 0.2   |
| TOTAL      |   |             | 136.5              | 184.1 | 59.4  | 80.7  |



**Farm #12797**  
**TJC Trust**  
**Woodford County, Illinois**

Latitude: 40.7449° N  
Longitude: 89.0921° W  
Imagery Source: USDA NAIP  
Soil Data Source: USDA NRCS  
Boundaries are Approximate