

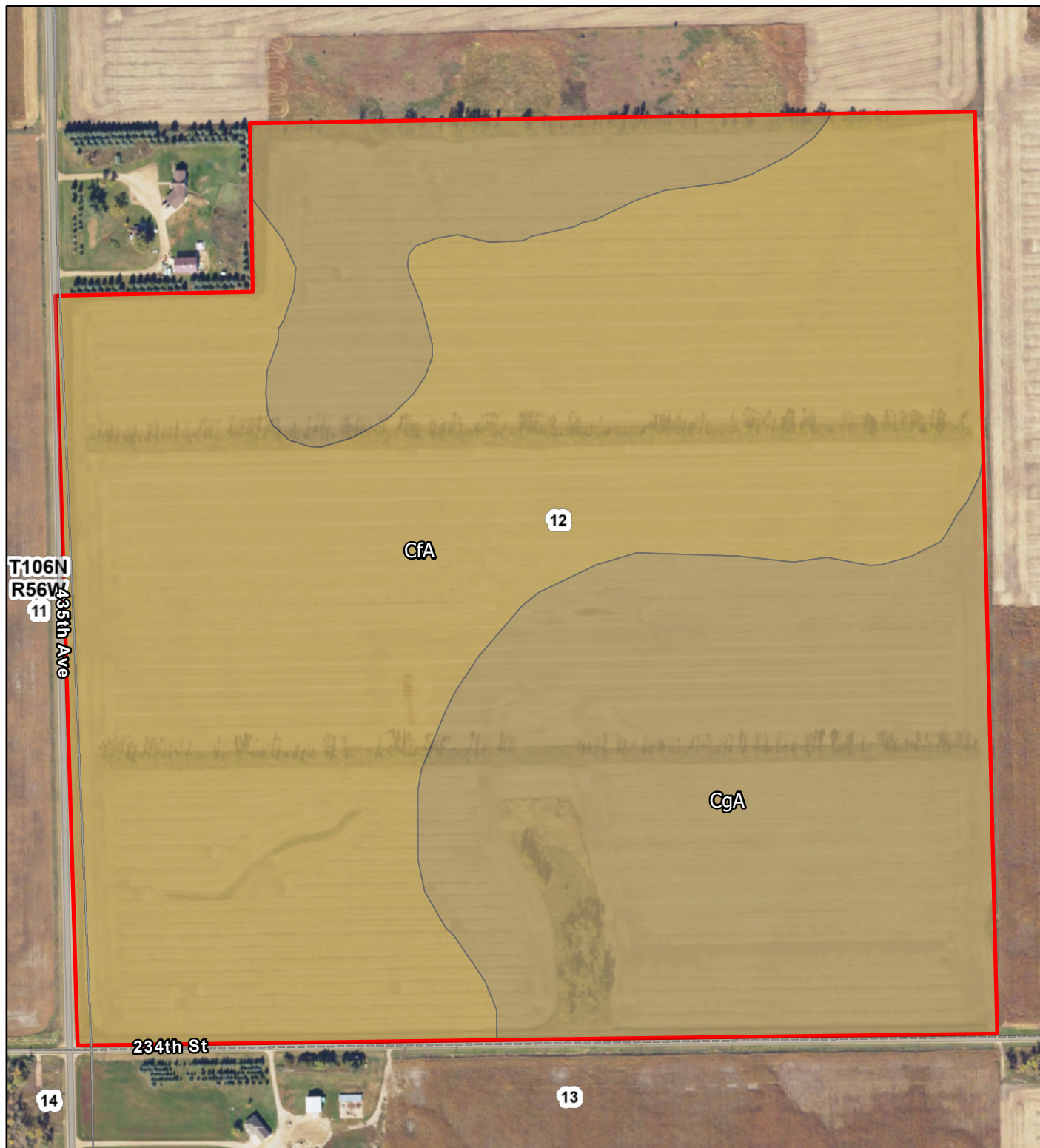
A-16405
153.94 Ac
Miner County, South Dakota

Latitude: 44.0081°N
Longitude: 97.5186°W
Imagery Source: USDA NAIP
Soil Data Source: USDA NRCS
Boundaries are Approximate



A-16405
153.94 Ac
Miner County, South Dakota

Latitude: 43.9971°N
Longitude: 97.5052°W
Imagery Source: USDA NAIP
Soil Data Source: USDA NRCS
Boundaries are Approximate

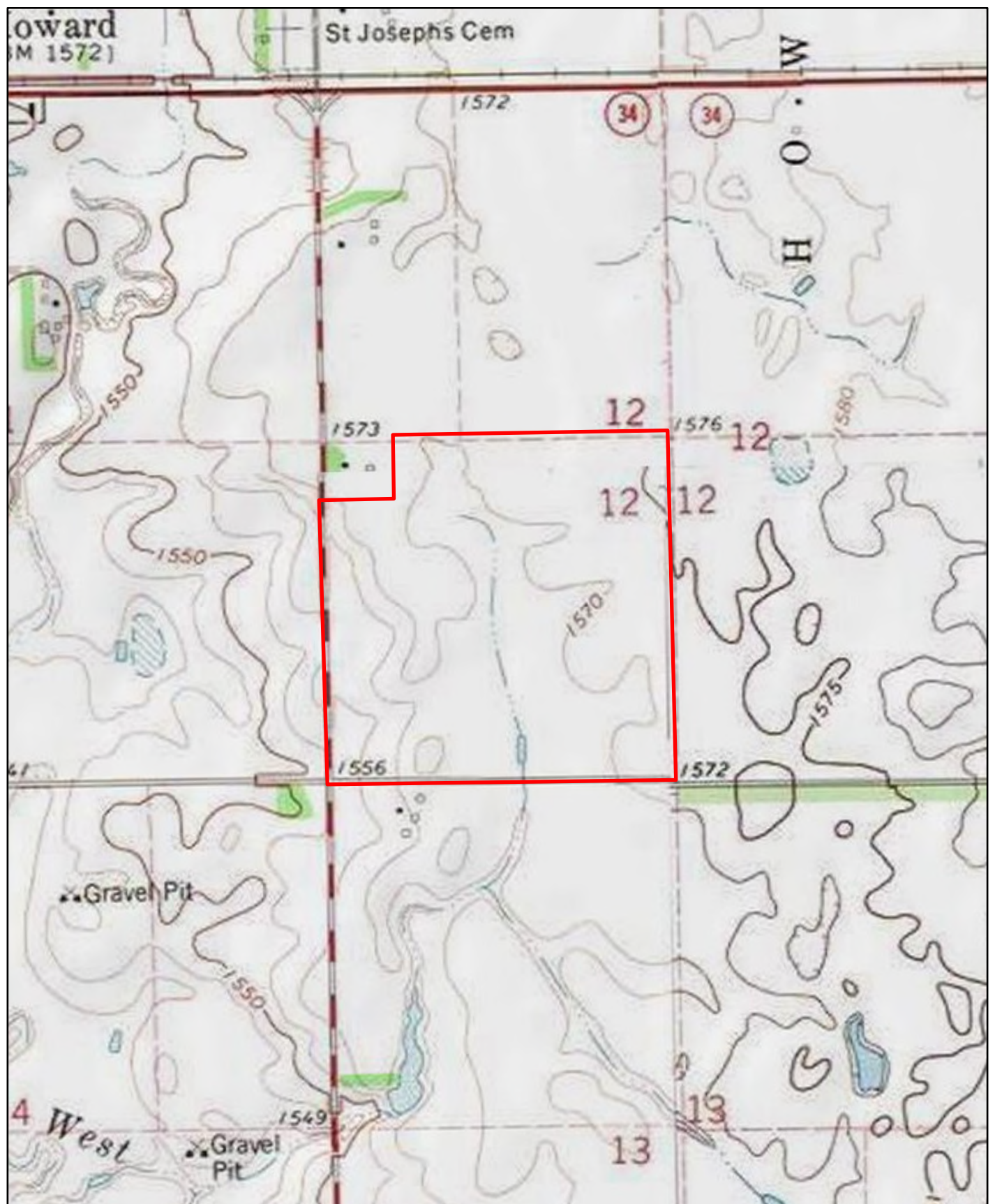


Map Symbol	Name	Non-IRR LCC	PRODUCTIVITY INDEX	ACRES
CfA	Clarno-Bonilla loams, 0 to 2 percent slopes	2c	88	90.7
CgA	Clarno-Crossplain complex, 0 to 2 percent slopes	2c	82	63.7
TOTAL			85.5	154.4



A-16405
153.94 Ac
Miner County, South Dakota

Latitude: 43.9971°N
Longitude: 97.5052°W
Imagery Source: USDA NAIP
Soil Data Source: USDA NRCS
Boundaries are Approximate



A-16405
153.94 Ac
Miner County, South Dakota

Latitude: 43.9971°N
Longitude: 97.5052°W
Imagery Source: USDA NAIP
Soil Data Source: USDA NRCS
Boundaries are Approximate