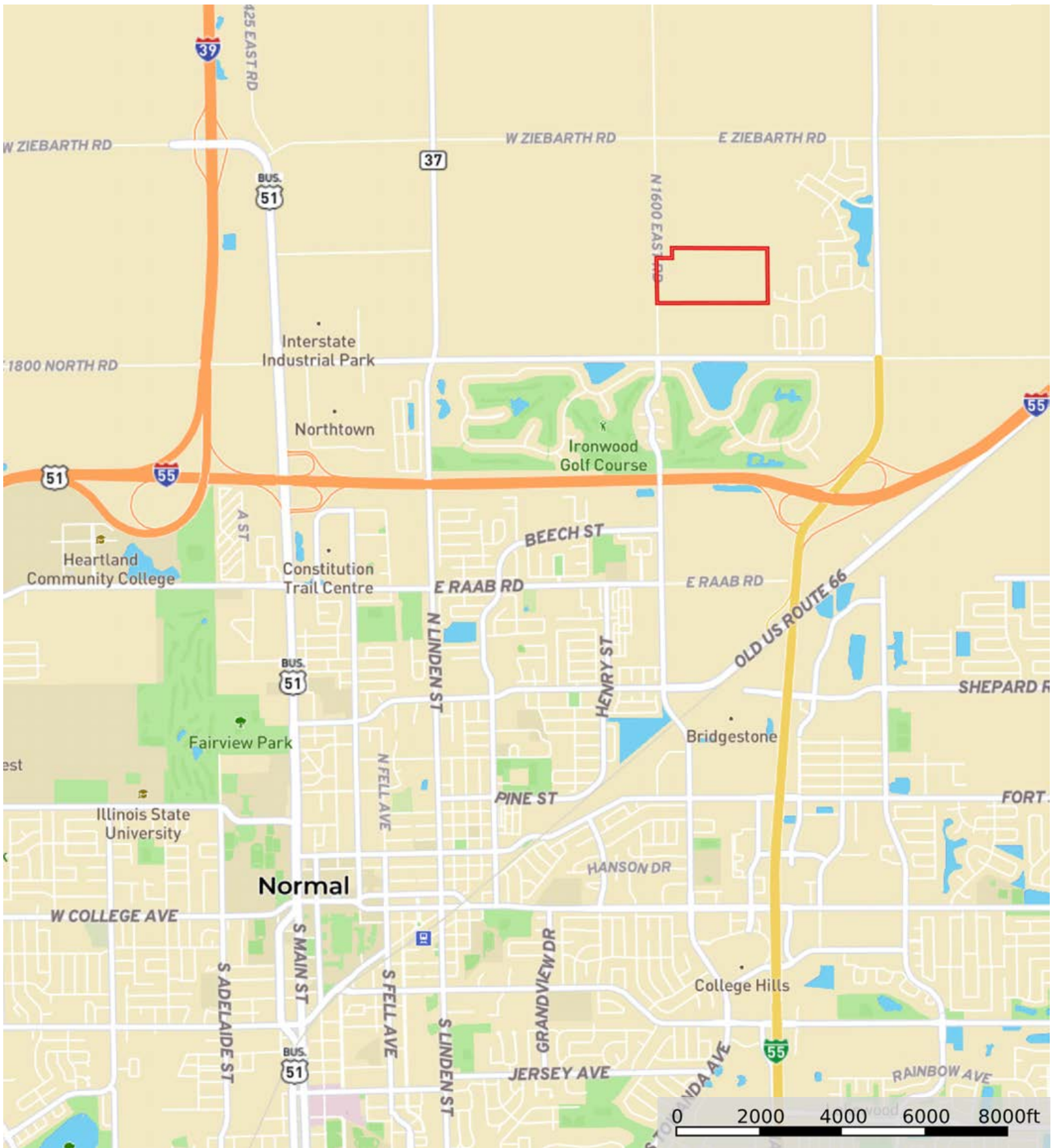


18587

McLean County, Illinois, 80.03 AC +/-




 Boundary

18587

McLean County, Illinois, 80.03 AC +/-




 Boundary

18587

McLean County, Illinois, 80.03 AC +/-



 Boundary

Boundary 79.89 ac

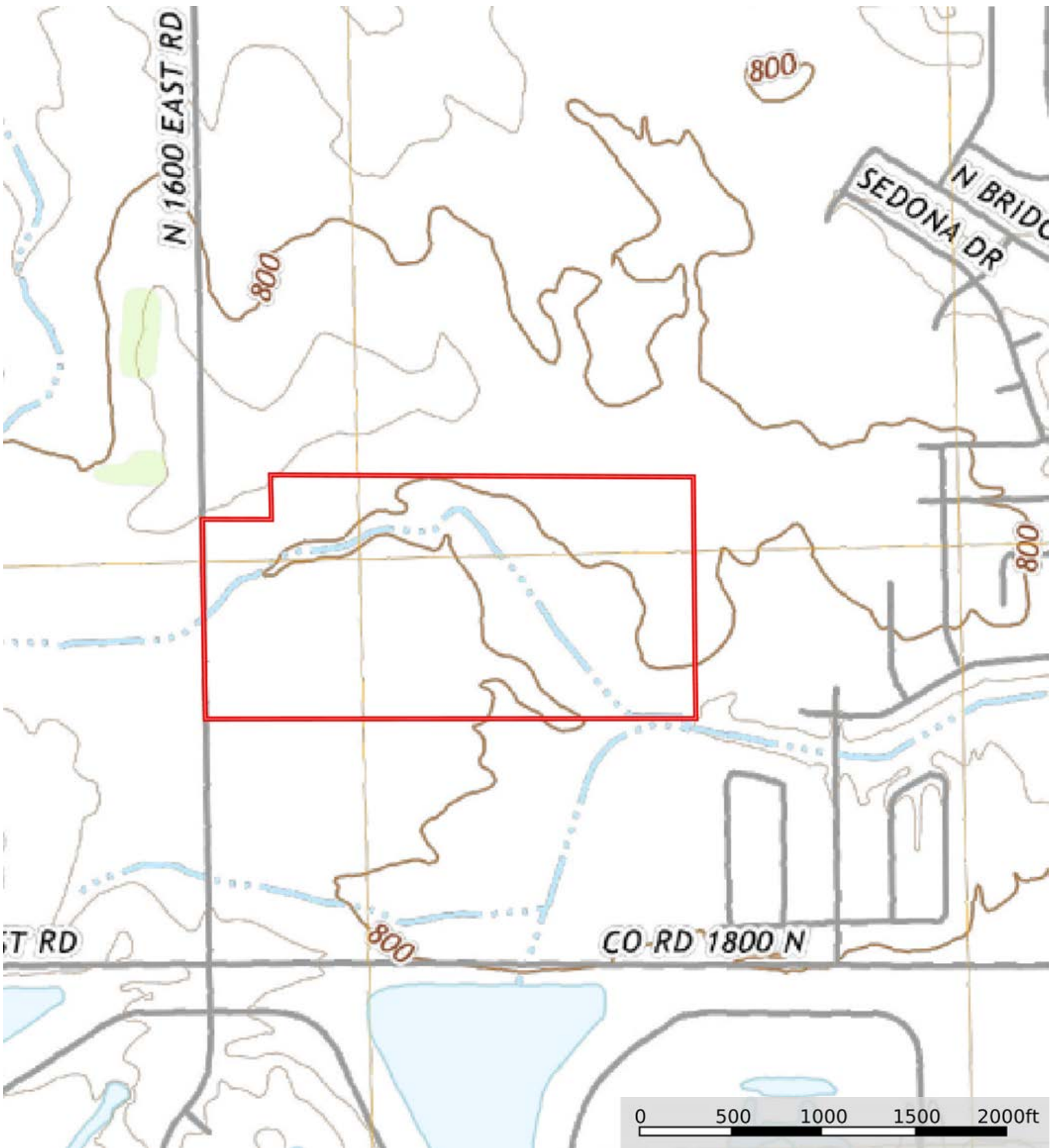
SOIL CODE	SOIL DESCRIPTION	ACRES	%	PI	NCCPI	CAP
43A	Ipava silt loam, 0 to 2 percent slopes	28.86	36.12	142	92	1
8074A	Radford silt loam, 0 to 2 percent slopes, occasionally flooded	25.6	32.04	136	76	2w
567B2	Elkhart silt loam, 2 to 5 percent slopes, eroded	9.2	11.51	119	77	2e
68A	Sable silty clay loam, 0 to 2 percent slopes	6.51	8.15	143	83	2w
86B2	Oscos silt loam, 2 to 5 percent slopes, eroded	5.24	6.56	133	89	2e
86B	Oscos silt loam, 2 to 5 percent slopes	3.18	3.98	138	94	2e
330A	Peotone silty clay loam, 0 to 2 percent slopes	0.73	0.91	123	59	3w
171B2	Catlin silt loam, 2 to 5 percent slopes, eroded	0.57	0.71	131	76	2e
TOTALS		79.89(*)	100%	136.47	83.86	1.65

(*) Total acres may differ in the second decimal compared to the sum of each acreage soil. This is due to a round error because we only show the acres of each soil with two decimal.



18587

McLean County, Illinois, 80.03 AC +/-



 Boundary



The information contained herein was obtained from sources deemed to be reliable. MapRight Services makes no warranties or guarantees as to the completeness or accuracy thereof.