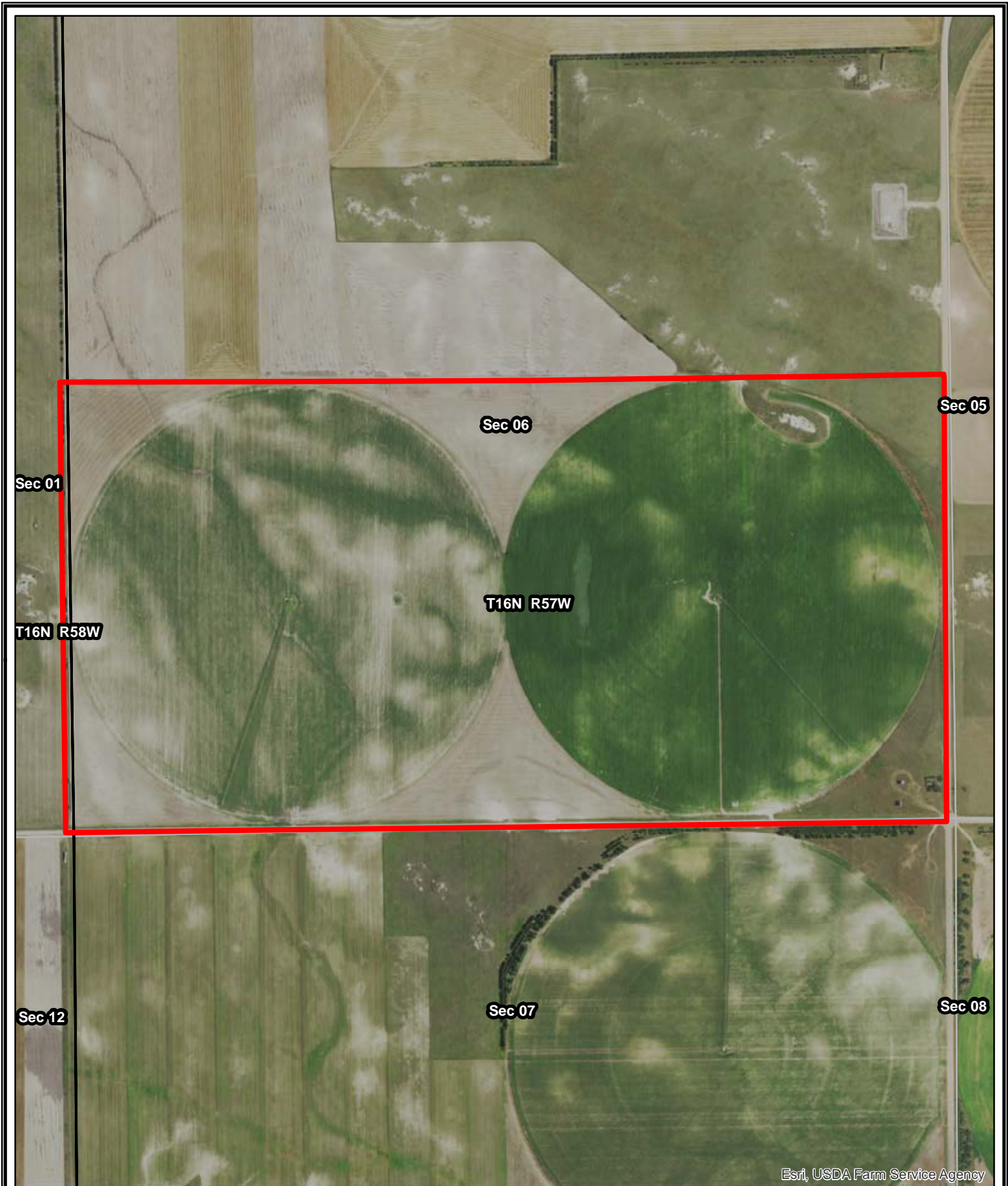


Farm #19361
Vamutas
Kimball County, Nebraska

Latitude: 41.2936°N
 Longitude: -103.9786°W
 Imagery Source: USDA NAIP
 Soil Data Source: USDA NRCS
 Boundaries Are Approximate

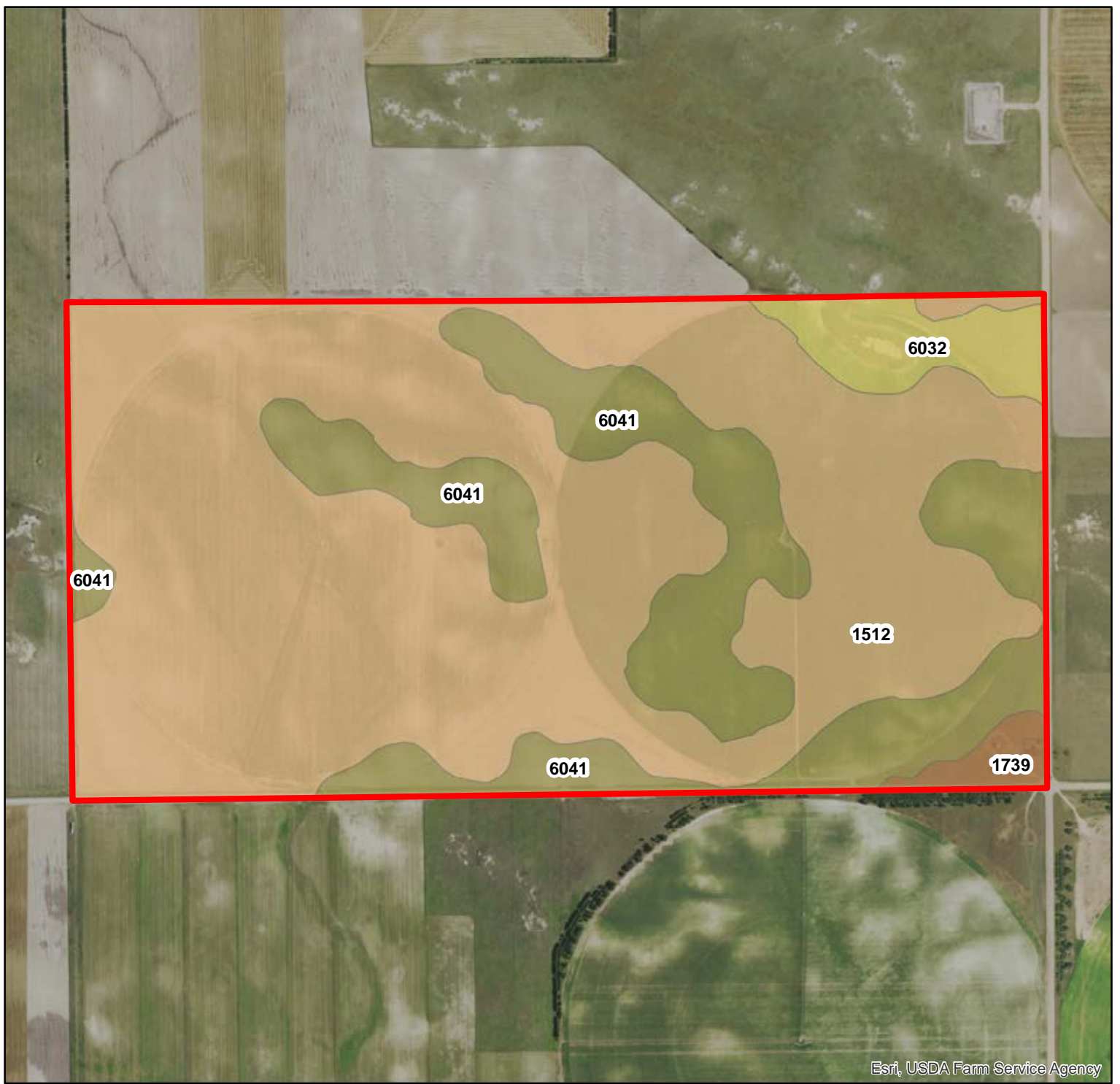


Esri, USDA Farm Service Agency



Farm #19361
Vamutas
Kimball County, Nebraska

Latitude: 41.3826°N
Longitude: -103.9022°W
Imagery Source: USDA NAIP
Soil Data Source: USDA NRCS
Boundaries Are Approximate



Esri, USDA Farm Service Agency

MAP SYMBOL	NAME	NON IRR LCC	IRR LCC	SRPG	ACRES
1512	Altvan-Satanta loams, 0 to 1 percent slopes	IIIc	IIIs	46	222.9
6041	Tassel-Blanche sandy loams, 3 to 9 percent slopes	VIe		16	75.9
6032	Tassel-Blanche complex, 9 to 30 percent slopes	VIIs		14	13.4
1739	Rosebud-Canyon loams, 1 to 3 percent slopes	IIIe	IIIe	5	4.6
TOTAL				36.9	316.7



Farm #19361
Vamutas
Kimball County, Nebraska

Latitude: 41.3826°N
 Longitude: -103.9022°W
 Imagery Source: USDA NAIP
 Soil Data Source: USDA NRCS
 Boundaries Are Approximate

Sec 06

Sec 05

Sec 07

T16N R57W

Sec 08

Sec 18

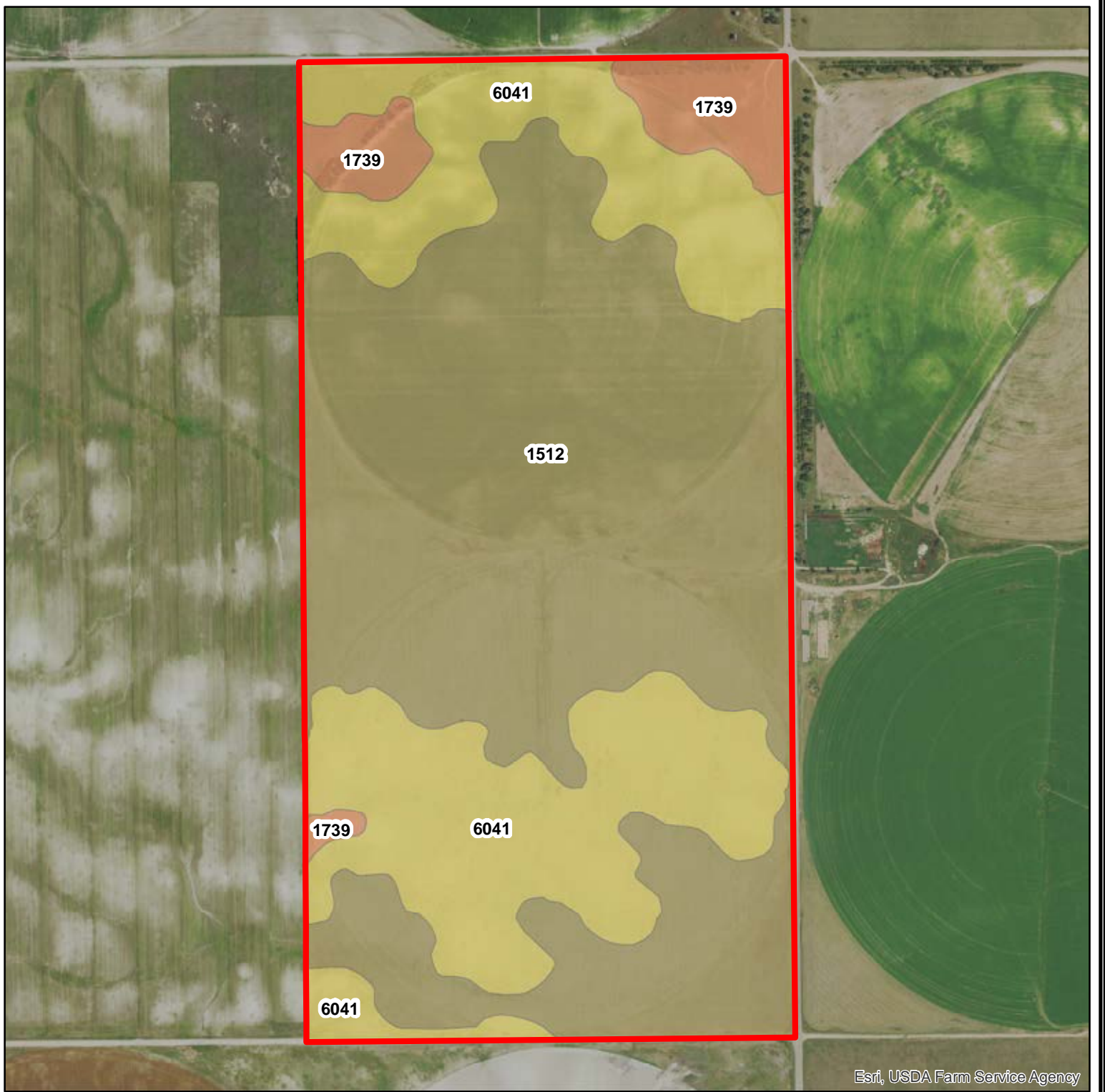
Sec 17

Esri, USDA Farm Service Agency



Farm #19361
Vamutas
Kimball County, Nebraska

Latitude: 41.3717°N
Longitude: -103.8976°W
Imagery Source: USDA NAIP
Soil Data Source: USDA NRCS
Boundaries Are Approximate



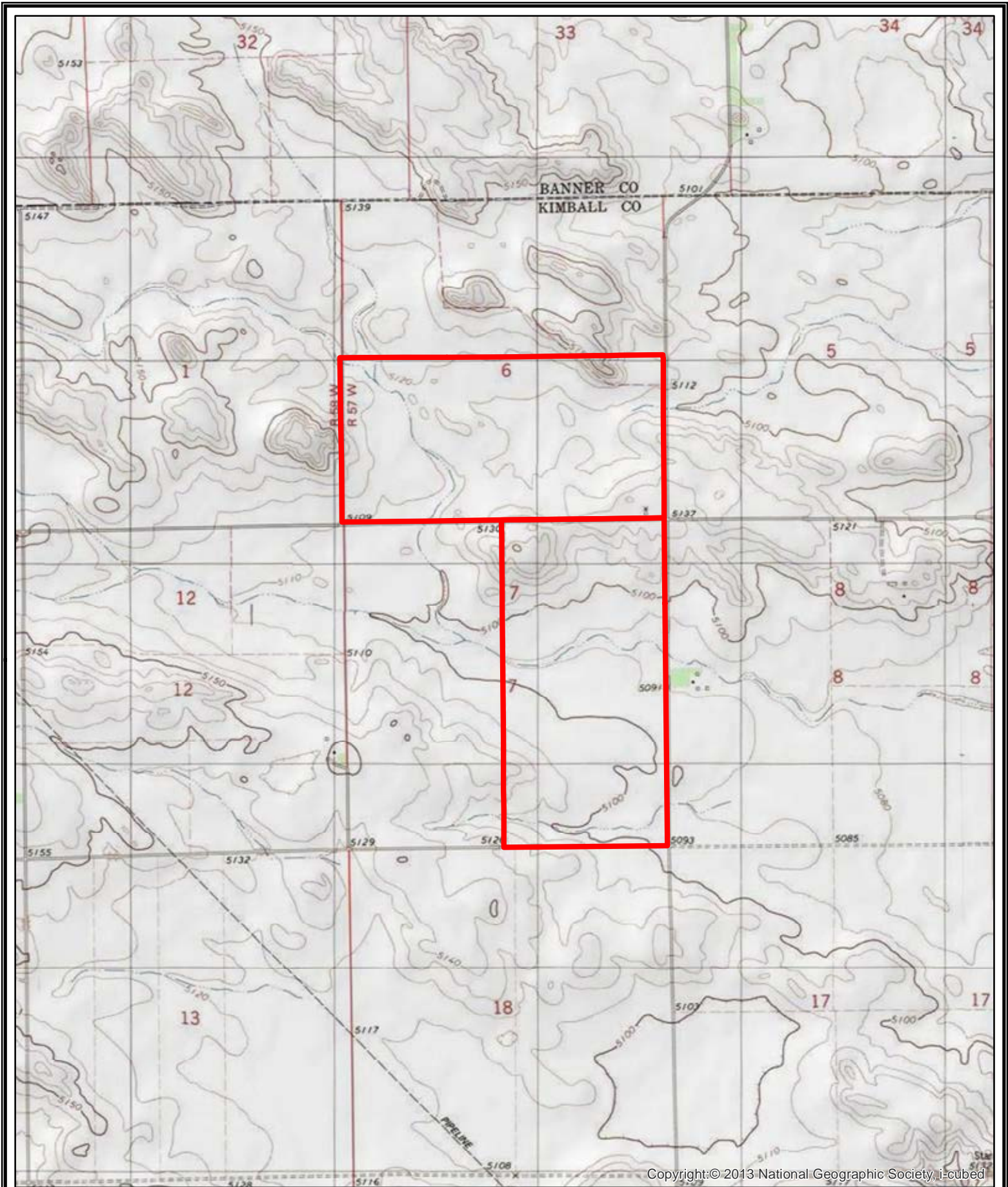
Esri, USDA Farm Service Agency

MAP SYMBOL	NAME	NON IRR LCC	IRR LCC	SRPG	ACRES
1512	Altvan-Satanta loams, 0 to 1 percent slopes	IIIc	IIs	46	195.9
6041	Tassel-Blanche sandy loams, 3 to 9 percent slopes	VIe		16	106.3
1739	Rosebud-Canyon loams, 1 to 3 percent slopes	IIIe	IIIe	5	18.4
TOTAL				33.7	320.6



Farm #19361
Vamutas
Kimball County, Nebraska

Latitude: 41.3717°N
 Longitude: -103.8976°W
 Imagery Source: USDA NAIP
 Soil Data Source: USDA NRCS
 Boundaries Are Approximate



Copyright:© 2013 National Geographic Society, i-cubed



Farm #19361
Vamutas
Kimball County, Nebraska

Latitude: 41.3754°N
Longitude: -103.9022°W
Imagery Source: USDA NAIP
Soil Data Source: USDA NRCS
Boundaries Are Approximate