

Boundary





Boundary

19691 - Peach

Cass County, North Dakota, 320 AC +/-



Boundary



The information contained herein was obtained from sources deemed to be reliable. Land id™ Services makes no warranties or guarantees as to the completeness or accuracy thereof.

| Boundary 320.42 ac

SOIL CODE	SOIL DESCRIPTION	ACRES	%	CPI	NCCPI	CAP
I211A	Wyndmere loam, 0 to 2 percent slopes	127.29	39.73	76	42	2e
I209A	Swenoda fine sandy loam, 0 to 2 percent slopes	53.13	16.58	75	62	3e
I503A	Lankin-Gilby loams, 0 to 2 percent slopes	34.4	10.74	86	68	2c
I424A	Embden loam, 0 to 2 percent slopes	31.6	9.86	84	56	3e
I410A	La Prairie silt loam, 0 to 2 percent slopes, occasionally flooded	15.48	4.83	86	64	2c
I478A	Lamoure silty clay loam, 0 to 1 percent slopes, occasionally flooded	15.37	4.8	61	49	2w
I481B	Hecla-Maddock fine sandy loams, 2 to 6 percent slopes	14.1	4.4	59	43	3e
I519A	Overly-Ryan silty clay loams, 0 to 2 percent slopes	14.09	4.4	78	52	2c
I495B	Egeland-Embden fine sandy loams, 2 to 6 percent slopes	7.15	2.23	68	51	3e
I202E	Zell-Eckman silt loams, 15 to 25 percent slopes	3.35	1.05	35	45	6e
I481C	Maddock fine sandy loam, 6 to 9 percent slopes	2.95	0.92	44	41	4e
G143F	Buse-Barnes loams, 15 to 35 percent slopes	1.51	0.47	29	26	7e
TOTALS		320.42(*)	100%	75.68	51.52	2.41









(*) Total acres may differ in the second decimal compared to the sum of each acreage soil. This is due to a round error because we only show the acres of each soil with two decimal.

Capability Legend

Increased Limitations and Hazards

Decreased Adaptability and Freedom of Choice Users

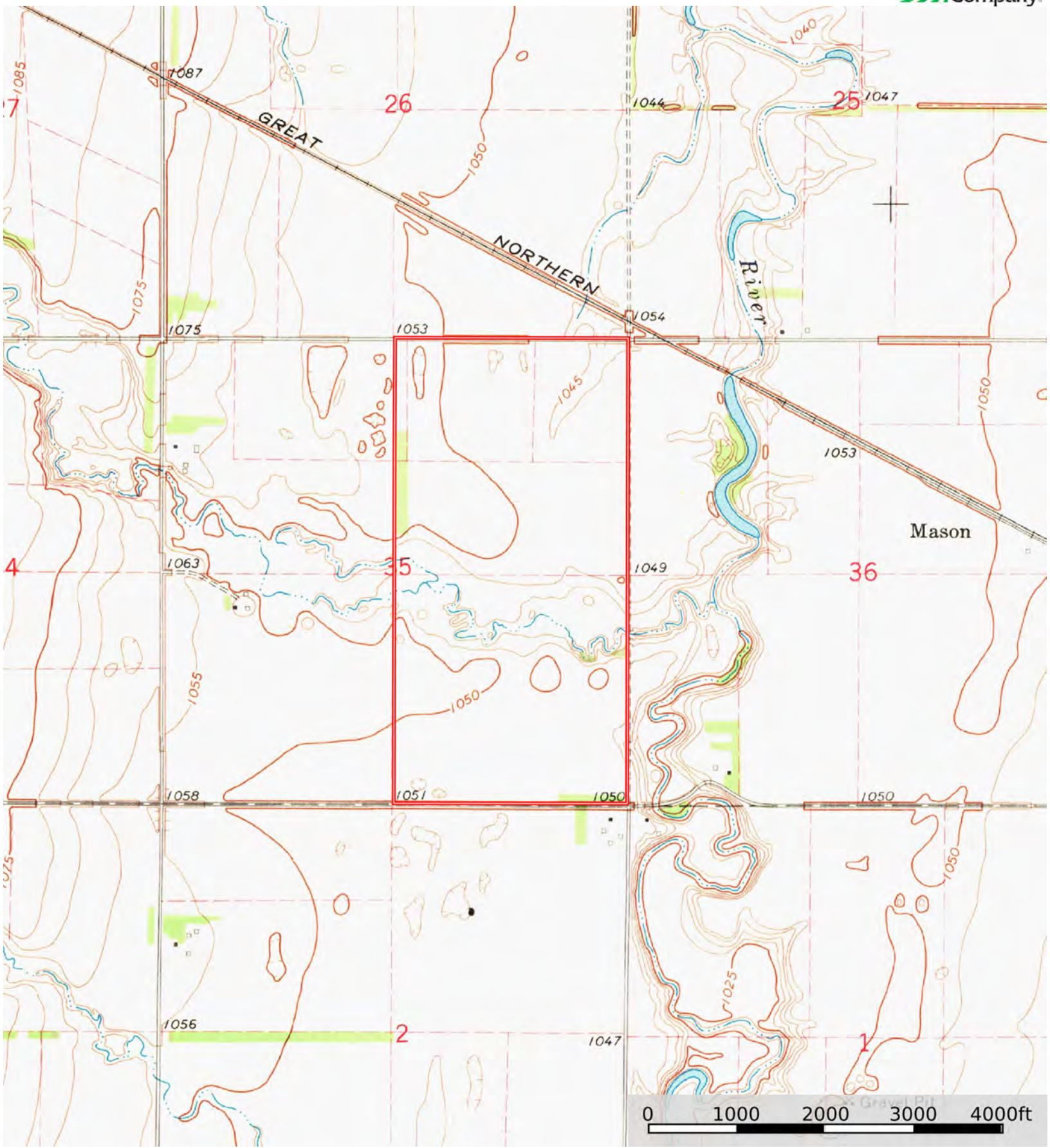
Land, Capability

								
	1	2	3	4	5	6	7	8
'Wild Life'	•	•	•	•	•	•	•	•
Forestry	•	•	•	•	•	•	•	
Limited	•	•	•	•	•	•	•	
Moderate	•	•	•	•	•	•		
Intense	•	•	•	•	•			
Limited	•	•	•	•				
Moderate	•	•	•					
Intense	•	•						
Very Intense	•							

Grazing Cultivation

(c) climatic limitations (e) susceptibility to erosion

(s) soil limitations within the rooting zone (w) excess of water



Boundary