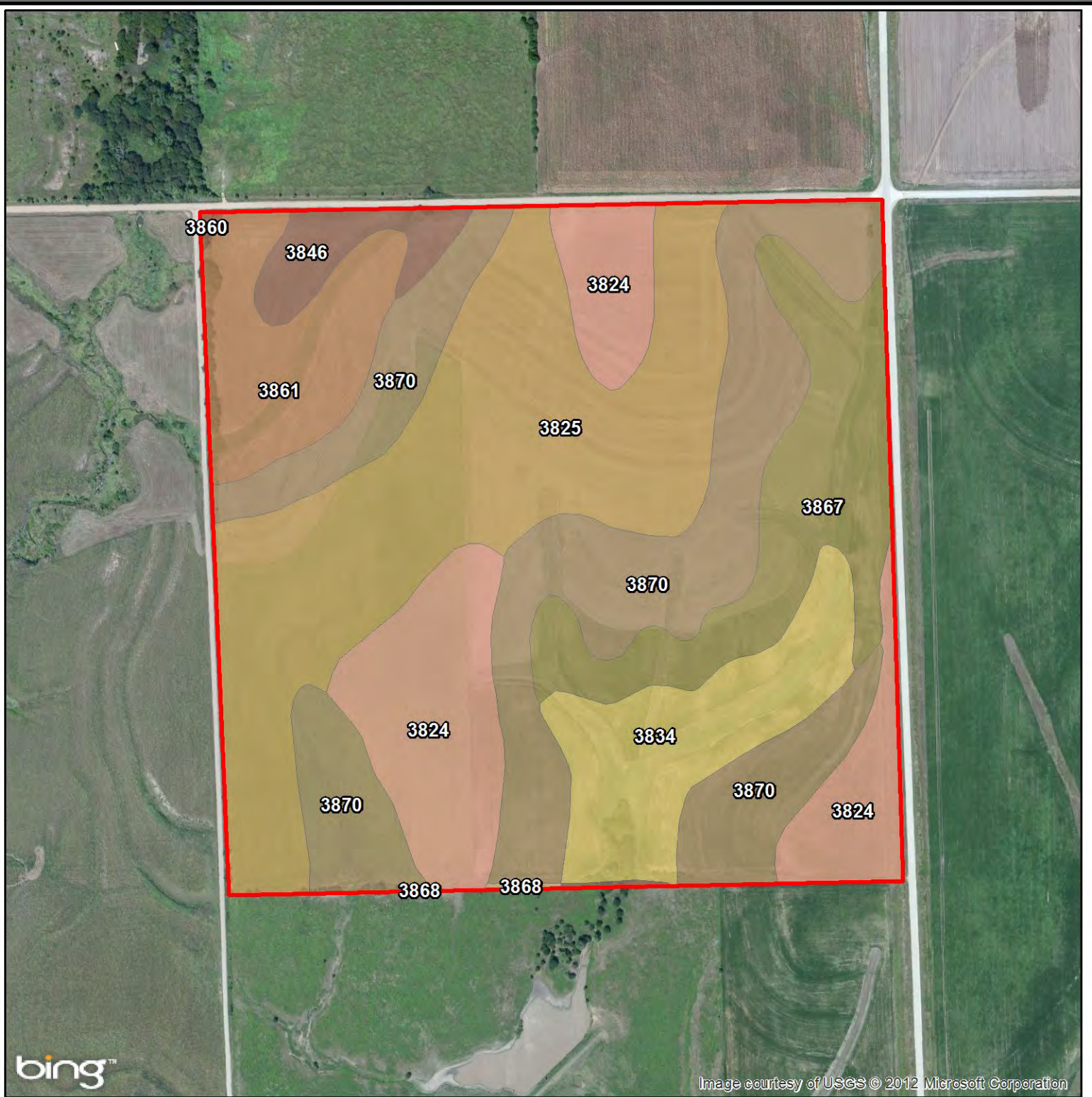




**Farm #20175**  
**Bauer Living Trust**  
**Jefferson Co., NE**

Jeff Monhollon, AFM  
Imagery Source: USDA NAIP  
Soil Data Source: USDA NRCS  
Boundaries Are Approximate



bing™

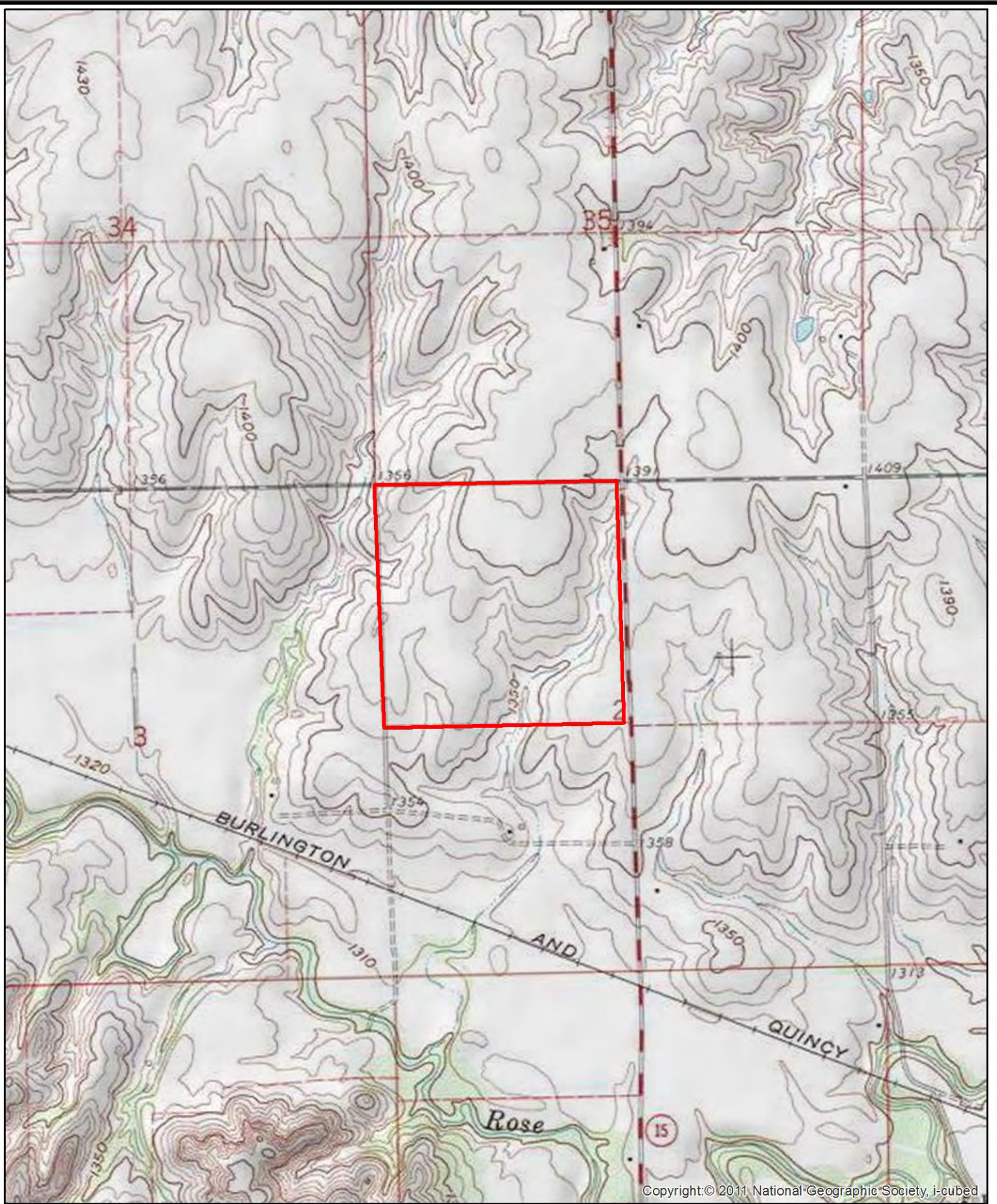
Image courtesy of USGS © 2012 Microsoft Corporation



**Farm #20175**  
**Bauer Living Trust**  
**Jefferson Co., NE**

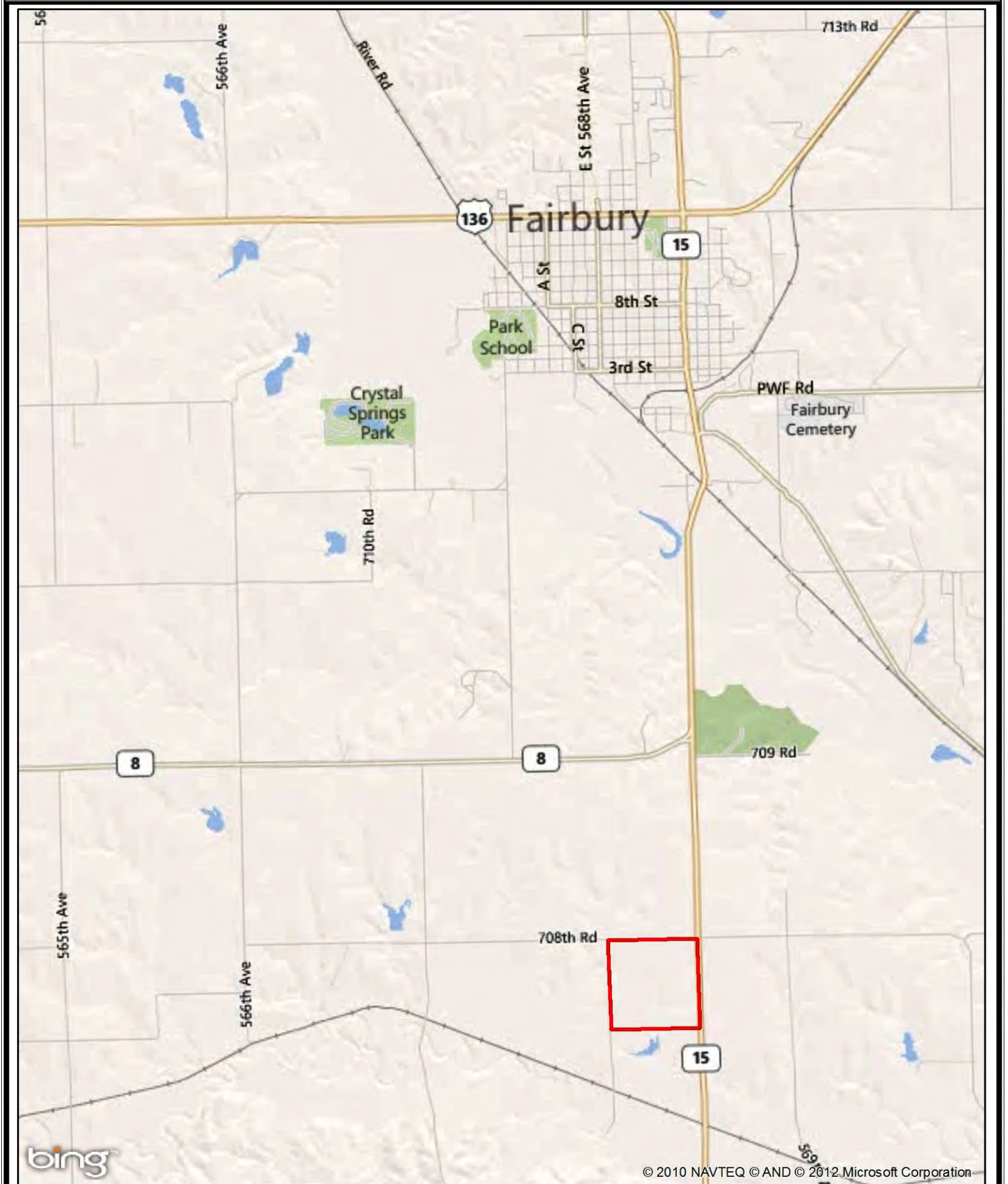
Jeff Monhollon, AFM  
 Imagery Source: USDA NAIP  
 Soil Data Source: USDA NRCS  
 Boundaries Are Approximate

Map		NON-IRR	IRR		NON-IRR	IRR	
Symbol	Name	LCC	LCC	SRPG	CORN	CORN	Acres
3825	Crete silt loam, 1 to 3 percent slopes	Ile	Ile	65	87	177	42.4
3870	Hastings silty clay loam, 3 to 7 percent slopes, eroded	IIIe	IIIe	69	73	138	41.7
3824	Crete silt loam, 0 to 1 percent slopes	IIs	IIs	---	---	---	23.7
3867	Hastings silty clay loam, 3 to 11 percent slopes, severely eroded	IVe	IVe	68	53	122	17.4
3834	Geary silty clay loam, 3 to 11 percent slopes, severely eroded	IVe	IVe	70	54	111	13.8
3861	Geary and Jansen soils, 7 to 11 percent slopes, eroded	IVe	IVe	59	36	108	11.4
3846	Geary silty clay loam, 3 to 7 percent slopes, eroded	IIIe	IIIe	74	71	136	4.3
3868	Hastings silt loam, 3 to 7 percent slopes	IIIe	IIIe	71	75	140	0.2
3860	Geary and Jansen soils, 11 to 30 percent slopes	VIe	---	36	---	---	0.2
<b>Total</b>				<b>56.7</b>	<b>58.9</b>	<b>120.9</b>	<b>155.0</b>



**Farm #20175**  
**Bauer Living Trust**  
**Jefferson Co., NE**

Jeff Monhollon, AFM  
Imagery Source: USDA NAIP  
Soil Data Source: USDA NRCS  
Boundaries Are Approximate



© 2010 NAVTEQ © AND © 2012 Microsoft Corporation



**Farm #20175**  
**Bauer Living Trust**  
**Jefferson Co., NE**

Jeff Monhollon, AFM  
Imagery Source: USDA NAIP  
Soil Data Source: USDA NRCS  
Boundaries Are Approximate