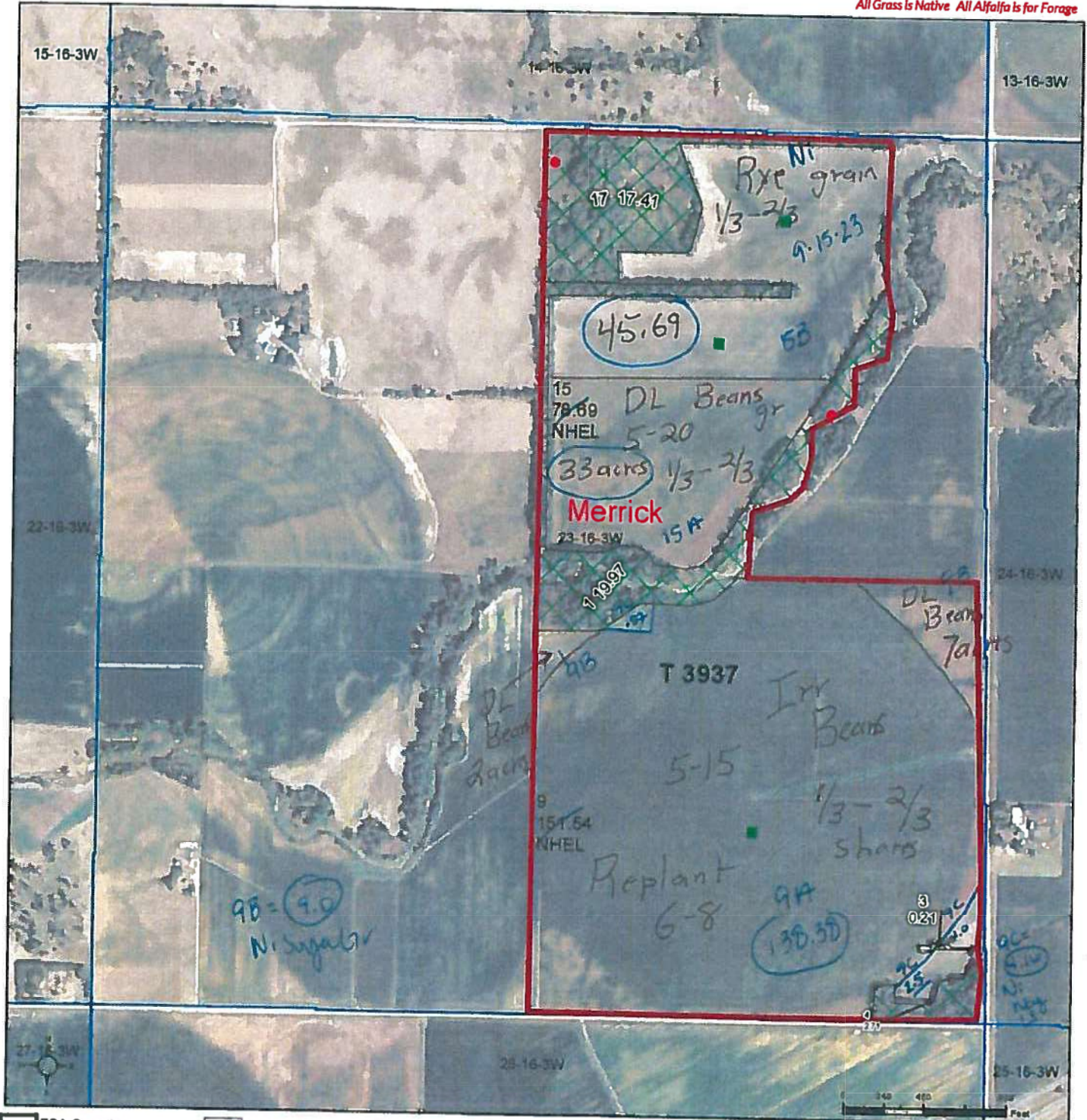


Unless Otherwise Noted -
 All Fields are Non-Irrigated
 All Corn is Yellow/Grain
 All Soybeans are Common/Grain
 All Grass is Native All Alfalfa is for Forage



- FSA Counties
- Common Land Unit
- Non-Cropland
- Cropland
- Tract Boundary
- PLSS

- Wetland Determination Identifiers**
- Restricted Use
 - ▼ Limited Restrictions
 - Exempt from Wetland Provisions

2022 NAIP Ortho Imagery

Tract Cropland Total: 230.23 acres

Did YOU include?

- ⇒ Irr/Ni
- ⇒ Crop/Type
- ⇒ Intended Use
- ⇒ Acres
- ⇒ Plant Date
- ⇒ Shares

2024 Program Year

Map Created April 04, 2024

Farm 5499

Tract 3937

23-16-3W

United States Department of Agriculture (USDA) Farm Service Agency (FSA) maps are for FSA Program administration only. This map does not represent a legal survey or reflect actual ownership; rather it depicts the information provided directly from the producer and/or National Agricultural Imagery Program (NAIP) imagery. The producer accepts the data 'as is' and assumes all risks associated with its use. USDA-FSA assumes no responsibility for actual or consequential damage incurred as a result of any user's reliance on this data outside FSA Programs. Wetland identifiers do not represent the size, shape, or specific determination of the area. Refer to your original determination (CPA-026 and attached maps) for exact boundaries and determinations or contact USDA Natural Resources Conservation Service (NRCS).

FIELD NAME _____