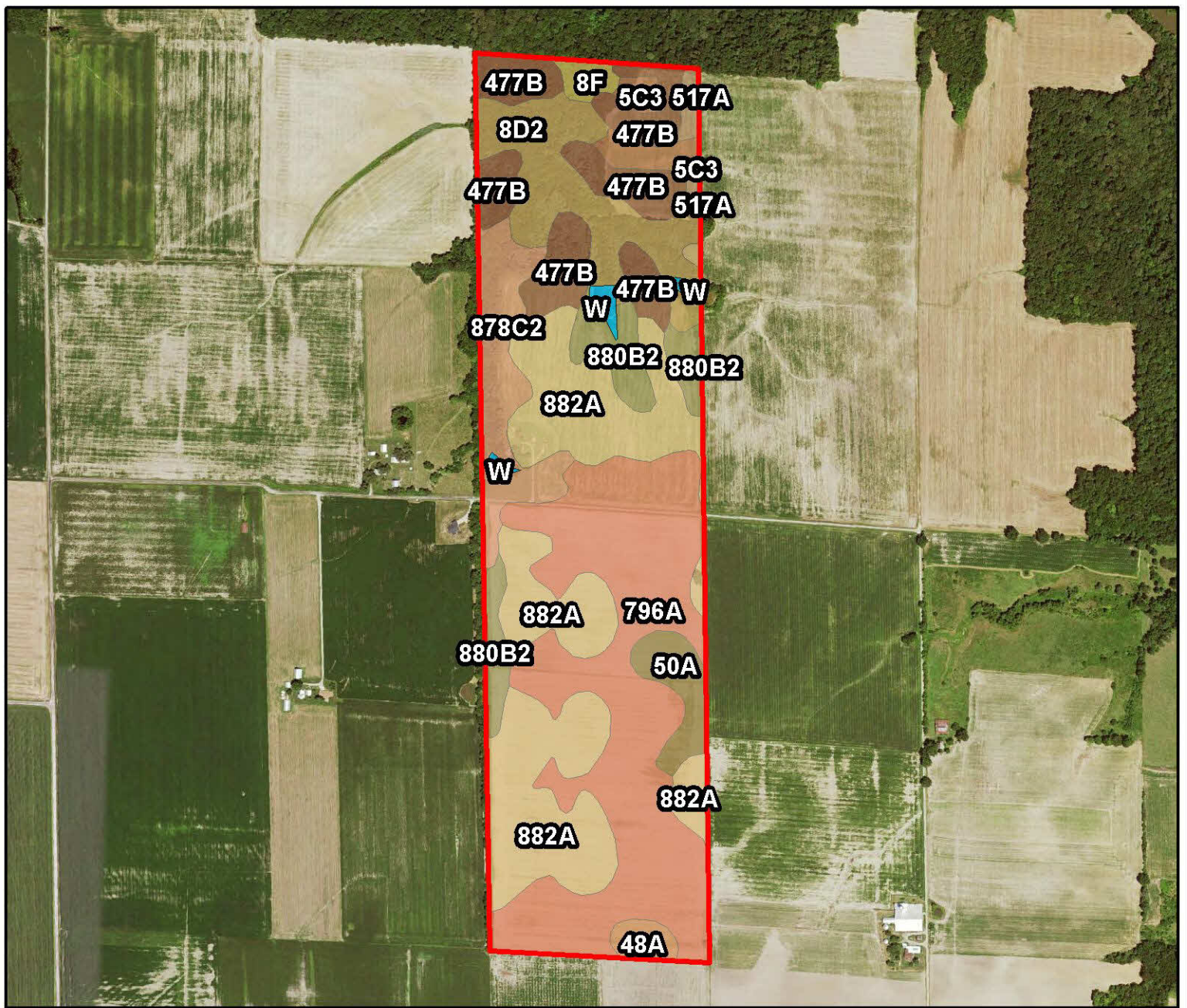




Farm #21646
Lee F. Schrader Rev. Living Tr
Washington County, Illinois

Latitude: 38.4606°N
Longitude: -89.4944°W
Imagery Source: USDA NAIP
Soil Data Source: USDA NRCS
Boundaries Are Approximate

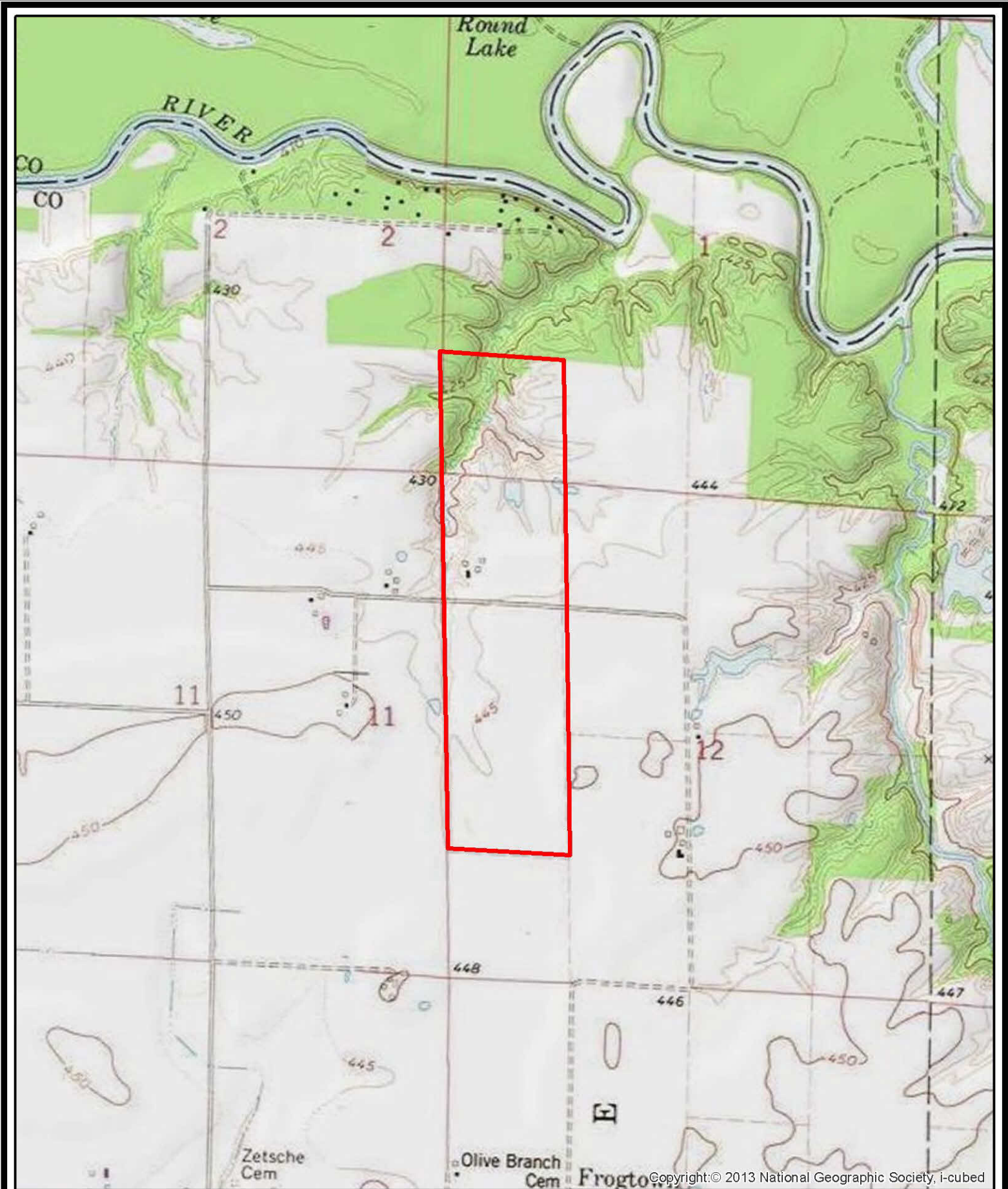


MAP SYMBOL	NAME	NON IRR LCC	PRODUCTIVITY INDEX	CORN YIELD	BEANS YIELD	ACRES
796A	Huey-Burksville silt loams, 0 to 2 percent slopes	IVw	97	123	44	48.9
882A	Oconee-Darmstadt-Coulterville silt loams, 0 to 2 percent slopes	IIw	110	148	48	43.3
477B	Winfield silt loam, 2 to 5 percent slopes	IIe	118	160	50	18.9
8D2	Hickory silt loam, 10 to 18 percent slopes, eroded	IIIe	82	108	36	15.9
878C2	Coulterville-Grantfork silt loams, 5 to 10 percent slopes, eroded	IVe	91	122	41	11.3
880B2	Darmstadt-Coulterville silt loams, 2 to 5 percent slopes, eroded	IIIe	97	129	43	8.6
50A	Virden silt loam, 0 to 2 percent slopes	IIw	135	182	59	4.6
5C3	Blair silty clay loam, 5 to 10 percent slopes, severely eroded	IVe	77	102	33	3.4
48A	Ebbert silt loam, 0 to 2 percent slopes	IIIw	125	173	55	1.9
517A	Marine silt loam, 0 to 2 percent slopes	IIw	104	144	45	1.6
8F	Hickory silt loam, 18 to 35 percent slopes	VIe	65	86	29	1.6
W	Water	VIIIw	---	---	---	1.5
TOTAL			100.9	133.4	44.5	161.4



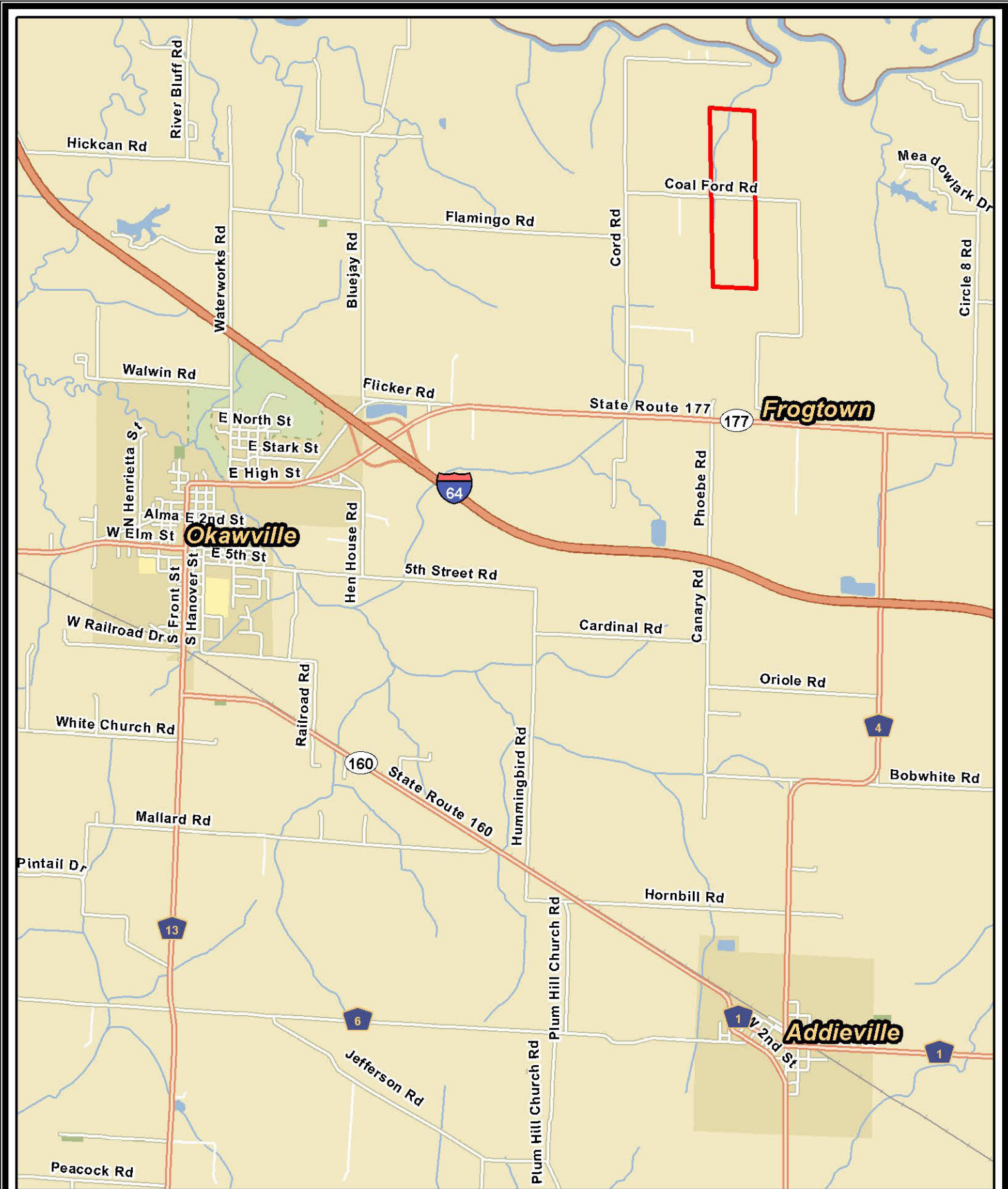
Farm #21646
Lee F. Schrader Rev. Living Tr
Washington County, Illinois

Latitude: 38.4606°N
 Longitude: -89.4944°W
 Imagery Source: USDA NAIP
 Soil Data Source: USDA NRCS
 Boundaries Are Approximate



Farm #21646
Lee F. Schrader Rev. Living Tr
Washington County, Illinois

Latitude: 38.4606°N
Longitude: -89.4944°W
Imagery Source: USDA NAIP
Soil Data Source: USDA NRCS
Boundaries Are Approximate



Farm #21646
Lee F. Schrader Rev. Living Tr
Washington County, Illinois

Latitude: 38.4267°N
 Longitude: -89.5170°W
 Imagery Source: USDA NAIP
 Soil Data Source: USDA NRCS
 Boundaries Are Approximate