

22694
Dennis R. Schworer LLC-Avoca
Pottawattamie, Iowa

Latitude: 41.504°N
Longitude: 95.3695°W
Imagery Source: USDA NAIP
Soil Data Source: USDA NRCS
Boundaries are Approximate



22694
Dennis R. Schworer LLC-Avoca
Pottawattamie, Iowa

Latitude: 41.504°N
Longitude: 95.3695°W
Imagery Source: USDA NAIP
Soil Data Source: USDA NRCS
Boundaries are Approximate

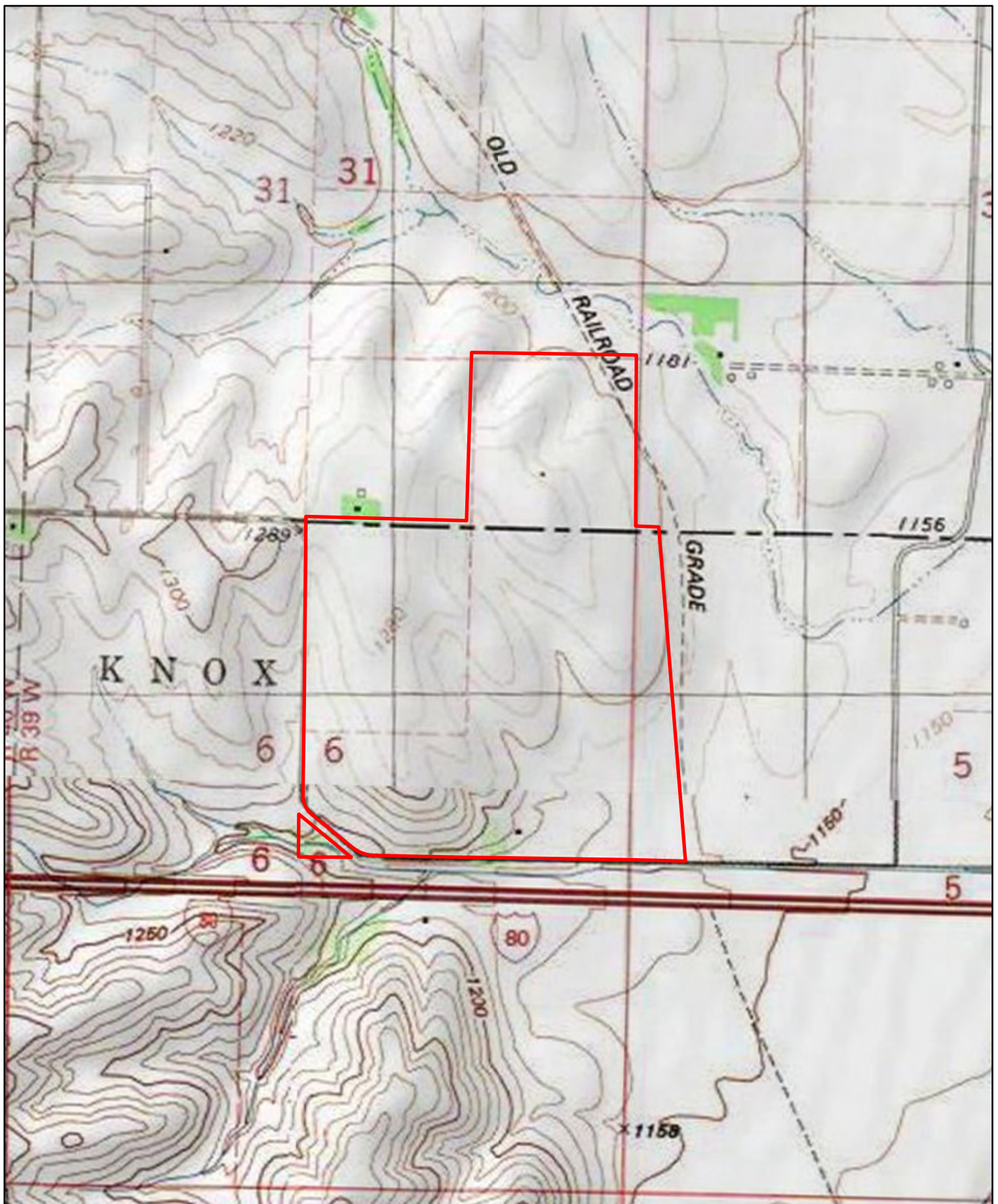


Map Symbol	Name	Non-IRR LCC	CSR	ACRES
10000	Monona silty clay loam, 14 to 20 percent slopes, eroded	IVe	46	25.57
8B	Judson silty clay loam, deep loess, 2 to 5 percent slopes	IIe	92	30.47
Z1820	Dockery-Quiver silt loams, deep loess, 0 to 2 percent slopes, occasionally flooded	IIw	87	20.54
10D2	Monona silt loam, 9 to 14 percent slopes, eroded	IIIe	60	13.42
431B	Judson-Ackmore-Colo, overwash complex, 1 to 5 percent slopes	IIe	81	0.44
9C2	Marshall silty clay loam, 5 to 9 percent slopes, eroded	IIIe	87	39.98
10000	Monona silt loam, 14 to 20 percent slopes, severely eroded	IVe	38	21.22
100C2	Monona silty clay loam, 5 to 9 percent slopes, eroded	IIIe	85	10.77
10D3	Monona silt loam, 9 to 14 percent slopes, severely eroded	IIIe	53	14.91
8C	Judson silty clay loam, deep loess, 5 to 9 percent slopes	IIIe	87	10.27
10C3	Monona silt loam, 5 to 9 percent slopes, severely eroded	IIIe	79	3.45
1000	Monona silt loam, 14 to 20 percent slopes, eroded	IVe	45	10.82
1D3	Ida silt loam, 9 to 14 percent slopes, severely eroded	IIIe	32	5.52
8C	Judson silty clay loam, deep loess, 5 to 9 percent slopes	IIIe	87	2.35
100D2	Monona silty clay loam, 9 to 14 percent slopes, eroded	IIIe	60	2.18
10C2	Monona silt loam, 5 to 9 percent slopes, eroded	IIIe	86	6.01
Z192D2	Adair clay loam, deep loess, 9 to 14 percent slopes, eroded	IVe	14	3.34
TOTAL			69.27	221.28



22694
Dennis R. Schworer LLC-Avoca
Pottawattamie, Iowa

Latitude: 41.504°N
Longitude: 95.3696°W
Imagery Source: USDA NAIP
Soil Data Source: USDA NRCS
Boundaries are Approximate



Farmers
National
Company™

22694
Dennis R. Schworer LLC-Avoca
Pottawattamie, Iowa

Latitude: 41.504°N
Longitude: 95.3695°W
Imagery Source: USDA NAIP
Soil Data Source: USDA NRCS
Boundaries are Approximate