

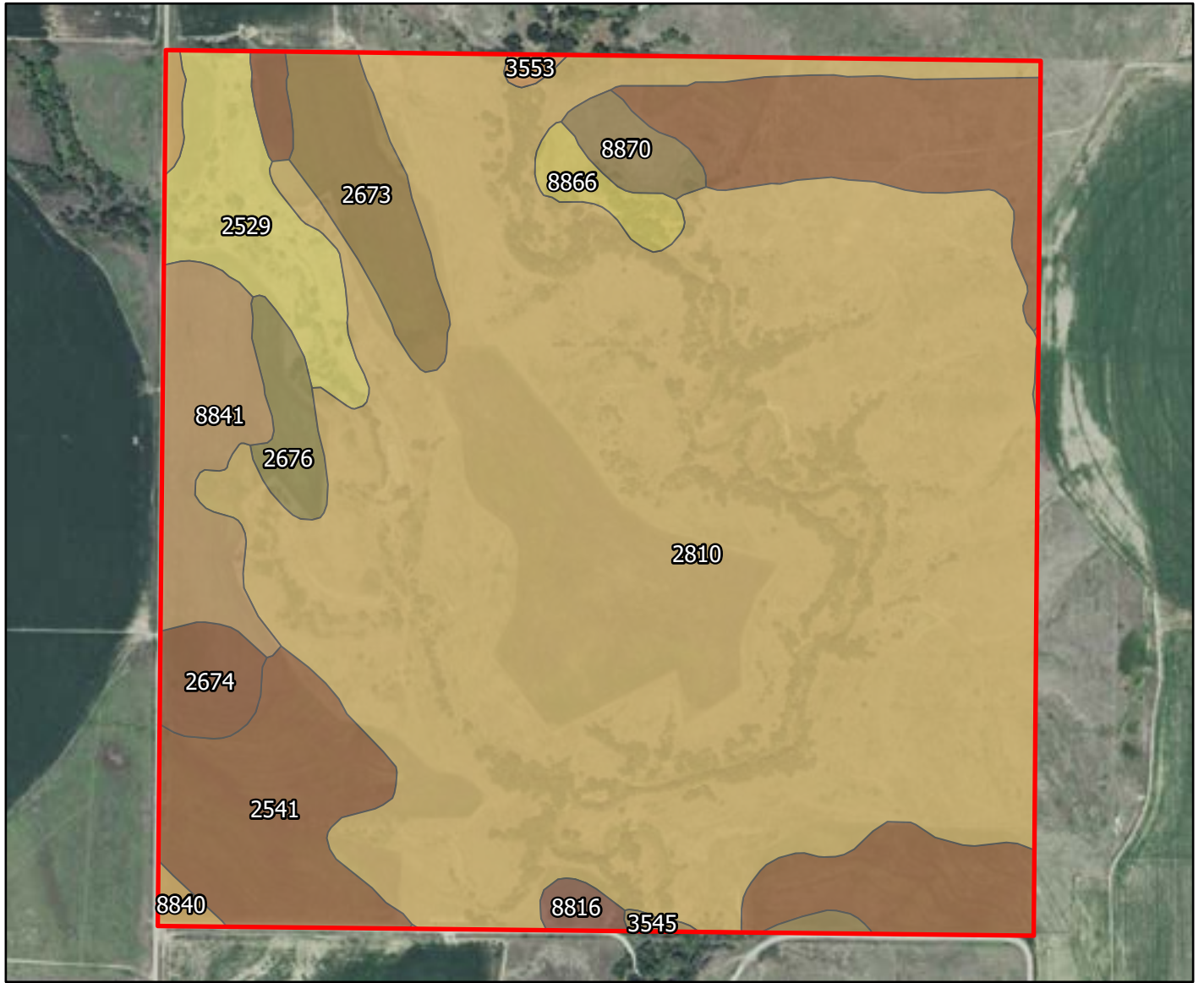
Farm #23037
Cary Gloor
Frontier County, Nebraska

Latitude: 40.4438°N
Longitude: 100.1404°W
Imagery Source: USDA NAIP
Soil Data Source: USDA NRCS
Boundaries are Approximate



Farm #23037
Cary Gloor
Frontier County, Nebraska

Latitude: 40.4622°N
Longitude: 100.0497°W
Imagery Source: USDA NAIP
Soil Data Source: USDA NRCS
Boundaries are Approximate

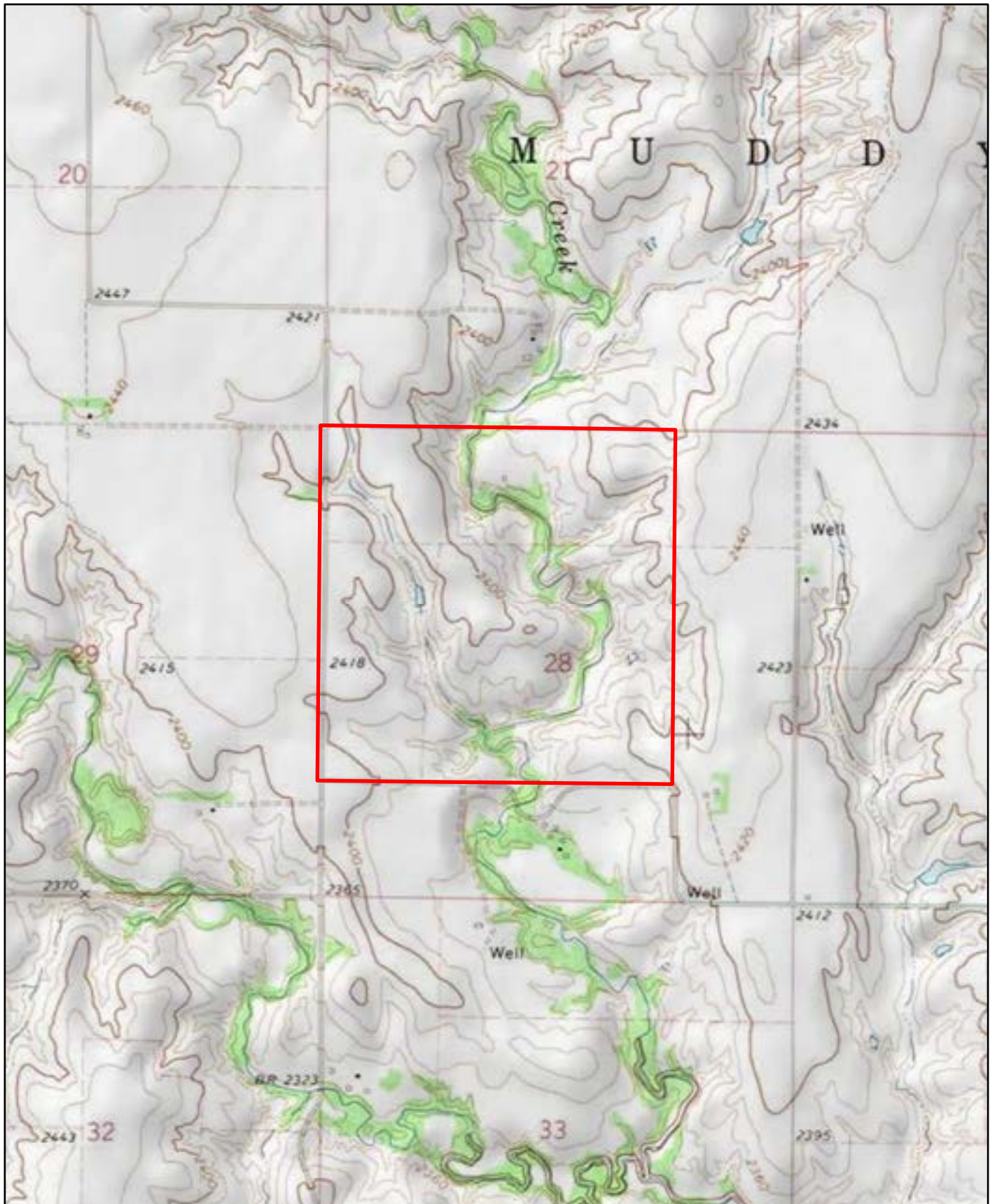


Map Symbol	Name	Non-IRR LCC	IRR LCC	ACRES
2810	Uly and Coly silt loams, 11 to 30 percent slopes	6e		243.7
2541	Coly silt loam, 11 to 17 percent slopes, eroded	6e		53.2
2529	Coly and Uly silt loams, 11 to 30 percent slopes	6e		15.1
8841	Hall silt loam, 1 to 3 percent slopes	2e	2e	14.5
2673	Holdrege silt loam, 0 to 1 percent slopes, plains and breaks	2c	2c	11.8
2674	Holdrege silt loam, 1 to 3 percent slopes, plains and breaks	2e	2e	6.6
2676	Holdrege silt loam, 3 to 7 percent slopes, eroded, plains and breaks	3e	3e	5.1
8870	Hord silt loam, 1 to 3 percent slopes	2e	2e	4.8
8866	Hord silt loam, 0 to 1 percent slopes, warm	2c	1	3.6
8840	Hall silt loam, 0 to 1 percent slopes	2c	1	2
8816	Cozad silt loam, 1 to 3 percent slopes	2e	2e	1.7
3553	Hobbs silt loam, frequently flooded	6w		0.7
3545	Hobbs silt loam, channeled, frequently flooded	5w	5w	0.5
				363.3



Farm #23037
Cary Gloor
Frontier County, Nebraska

Latitude: 40.4622°N
 Longitude: 100.0497°W
 Imagery Source: USDA NAIP
 Soil Data Source: USDA NRCS
 Boundaries are Approximate



Farm #23037
Cary Gloor
Frontier County, Nebraska

Latitude: 40.4622°N
Longitude: 100.0497°W
Imagery Source: USDA NAIP
Soil Data Source: USDA NRCS
Boundaries are Approximate