
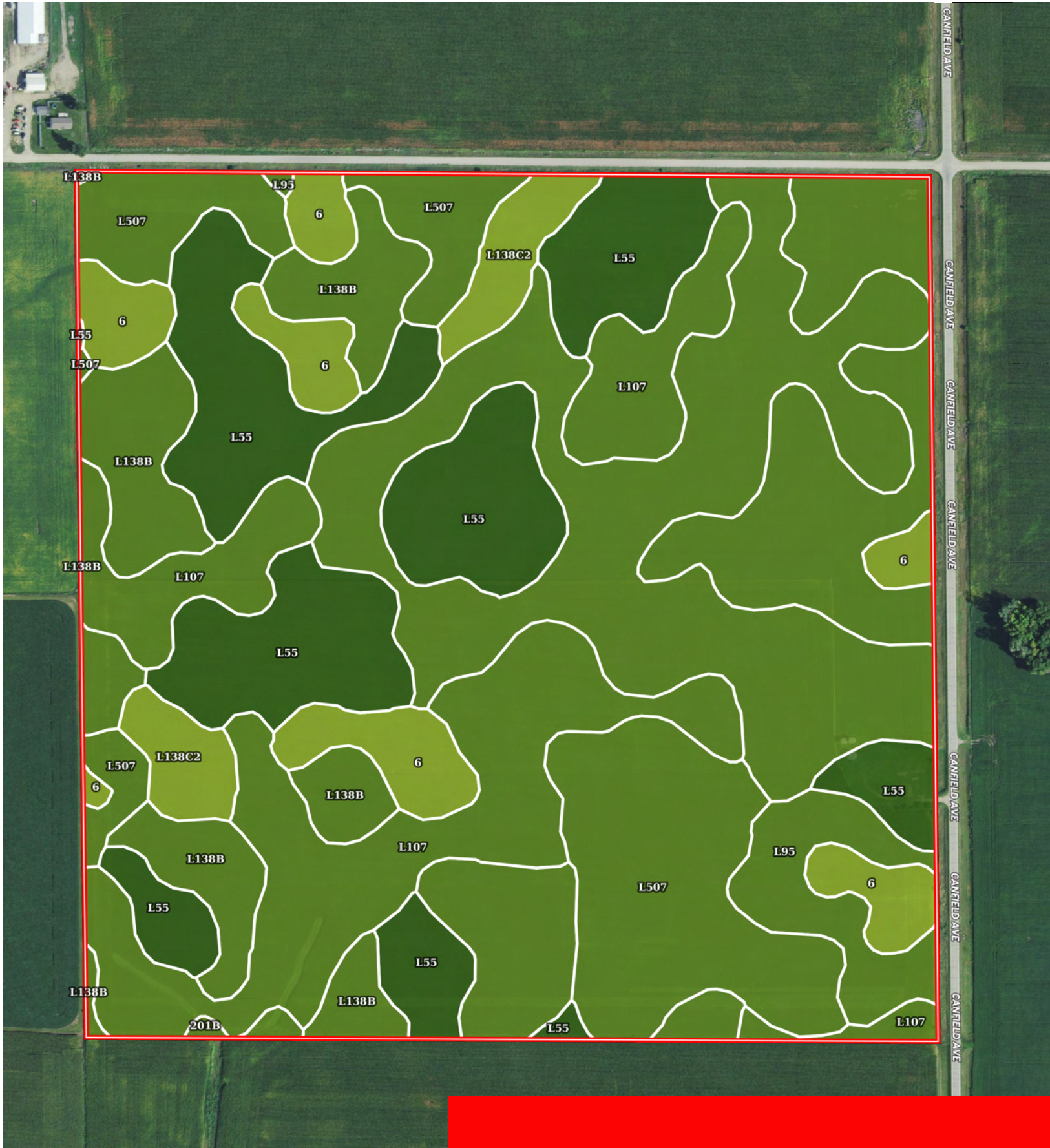

 Boundary



 Boundary



 Boundary

|  Boundary 153.24 ac

SOIL CODE	SOIL DESCRIPTION	ACRES	%	CSR2	CPI	NCCPI	CAP
L138B	Clarion loam, Bemis moraine, 2 to 6 percent slopes	47.48	30.98	88.0	0	80	2e
L107	Webster clay loam, Bemis moraine, 0 to 2 percent slopes	37.18	24.26	88.0	0	84	2w
L55	Nicollet loam, 1 to 3 percent slopes	29.37	19.17	91.0	0	85	1
L507	Canisteo clay loam, Bemis moraine, 0 to 2 percent slopes	19.78	12.91	87.0	0	81	2w
6	Okoboji silty clay loam, 0 to 1 percent slopes	9.71	6.34	59.0	0	76	3w
L95	Harps clay loam, Bemis moraine, 0 to 2 percent slopes	4.83	3.15	75.0	0	81	2w
L138C2	Clarion loam, Bemis moraine, 6 to 10 percent slopes, moderately eroded	4.5	2.94	83.0	0	62	3e
201B	Coland-Terril complex, 2 to 5 percent slopes	0.39	0.25	75.0	0	88	2w
TOTALS		153.24(*)	100%	86.02	-	81.33	1.9









(\*) Total acres may differ in the second decimal compared to the sum of each acreage soil. This is due to a round error because we only show the acres of each soil with two decimal.

## Capability Legend

Increased Limitations and Hazards

Decreased Adaptability and Freedom of Choice Users

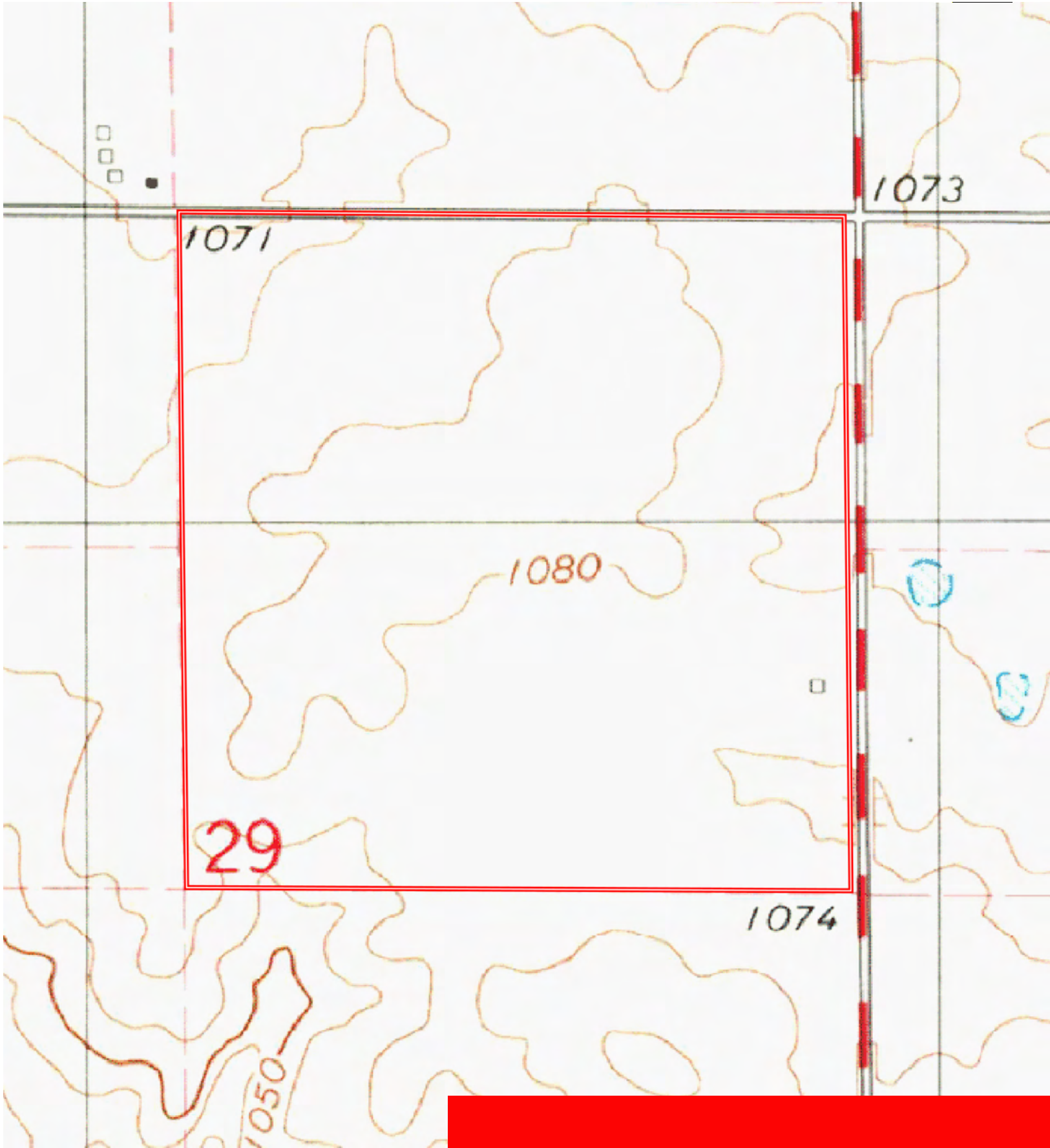
Land, Capability


								
	1	2	3	4	5	6	7	8
'Wild Life'	•	•	•	•	•	•	•	•
Forestry	•	•	•	•	•	•	•	
Limited	•	•	•	•	•	•	•	
Moderate	•	•	•	•	•	•		
Intense	•	•	•	•	•			
Limited	•	•	•	•				
Moderate	•	•	•					
Intense	•	•						
Very Intense	•							

## Grazing Cultivation

(c) climatic limitations (e) susceptibility to erosion

(s) soil limitations within the rooting zone (w) excess of water



 Boundary