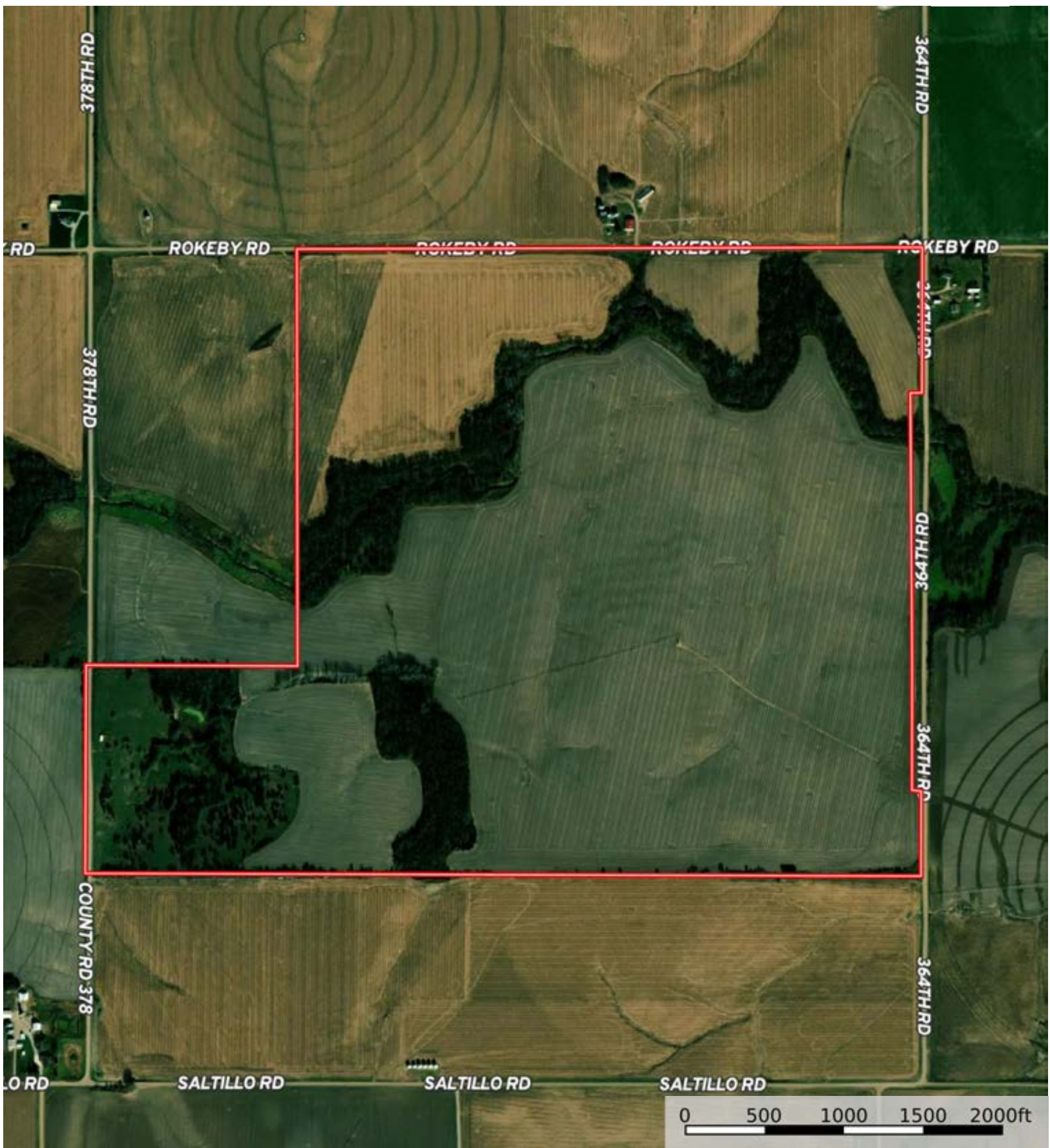


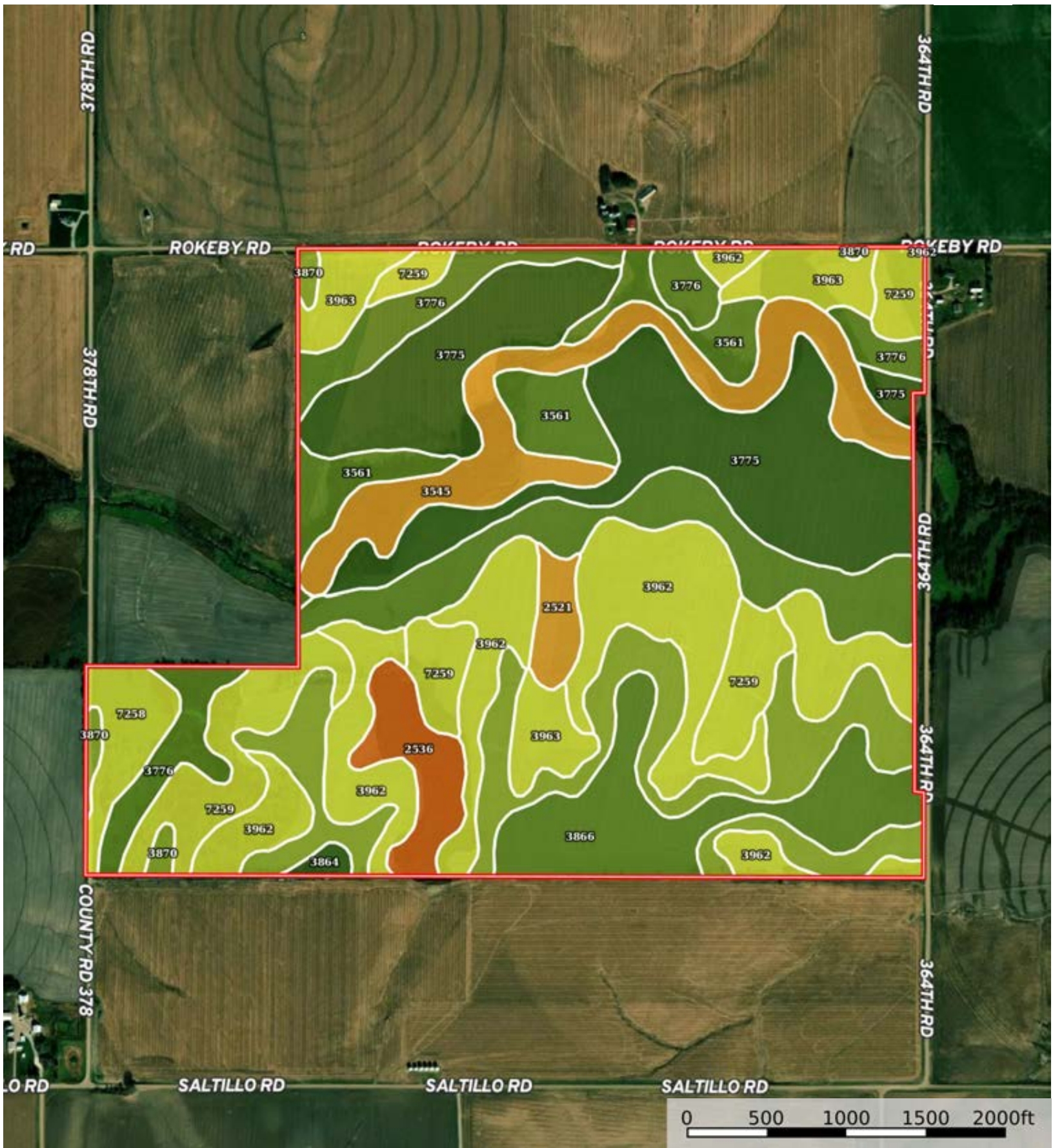
A-30435
Seward County, Nebraska, 397.7 AC +/-



 Boundary



 Boundary



 Boundary

|  Boundary 396.03 ac

SOIL CODE	SOIL DESCRIPTION	ACRES	%	CPI	NCCPI	CAP
3775	Muir silt loam, rarely flooded	73.61	18.59	0	86	1
3962	Hastings silty clay loam, 7 to 11 percent slopes, eroded	66.21	16.72	0	57	4e
3776	Muir silt loam, 1 to 3 percent slopes	51.83	13.09	0	81	2e
3870	Hastings silty clay loam, 3 to 7 percent slopes, eroded	45.37	11.46	0	58	3e
7259	Deroin silty clay loam, 6 to 11 percent slopes, severely eroded	34.13	8.62	0	56	4e
3545	Hobbs silt loam, channeled, frequently flooded	31.03	7.84	0	39	6w
3866	Hastings silt loam, 1 to 3 percent slopes	28.75	7.26	0	69	2e
3561	Hobbs silt loam, occasionally flooded	20.69	5.22	0	81	2w
3963	Hastings silty clay loam, 7 to 11 percent slopes, severely eroded	18.35	4.63	0	54	4e
2536	Coly silt loam, 30 to 60 percent slopes	10.9	2.75	0	14	7e
7258	Deroin silty clay loam, 6 to 11 percent slopes, eroded	8.8	2.22	0	62	4e
2521	Coly-Hobbs silt loams, 0 to 30 percent slopes	5.02	1.27	0	56	6e
3864	Hastings silt loam, 0 to 1 percent slopes	1.34	0.34	0	70	1
TOTALS		396.0 3(*)	100%	-	65.1	3.07









(*) Total acres may differ in the second decimal compared to the sum of each acreage soil. This is due to a round error because we only show the acres of each soil with two decimal.

Capability Legend

Increased Limitations and Hazards

Decreased Adaptability and Freedom of Choice Users

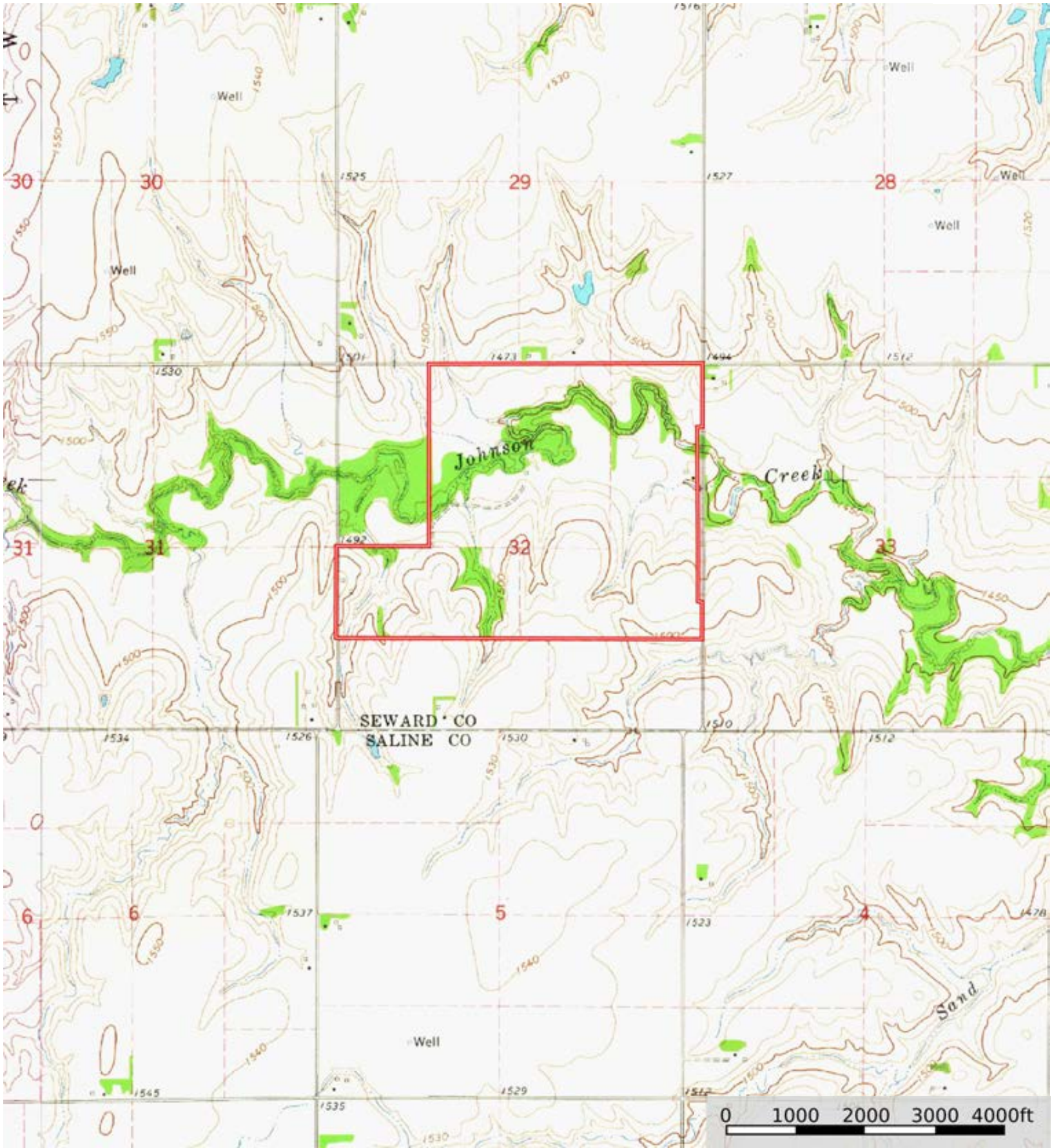
Land, Capability

								
	1	2	3	4	5	6	7	8
'Wild Life'	•	•	•	•	•	•	•	•
Forestry	•	•	•	•	•	•	•	
Limited	•	•	•	•	•	•	•	
Moderate	•	•	•	•	•	•		
Intense	•	•	•	•	•			
Limited	•	•	•	•				
Moderate	•	•	•					
Intense	•	•						
Very Intense	•							

Grazing Cultivation

(c) climatic limitations (e) susceptibility to erosion

(s) soil limitations within the rooting zone (w) excess of water



 Boundary