




 Boundary



 Boundary

|  Boundary 153.9 ac









SOIL CODE	SOIL DESCRIPTION	ACRES	%	CSR2	CAP
92	Marcus silty clay loam, 0 to 2 percent slopes	22.2	14.43	94	2w
135	Coland clay loam, 0 to 2 percent slopes	12.3	8.02	74	2w
505	Sperry silty clay loam, 0 to 1 percent slopes	0.2	0.15	33	3w
310	Galva silty clay loam, 0 to 2 percent slopes	9.1	5.89	100	1
78B2	Sac silty clay loam, 2 to 5 percent slopes, eroded	0.7	0.44	86	2e
91	Primghar silty clay loam, 0 to 2 percent slopes	6.3	4.11	100	1
810	Galva silty clay loam, terrace, 0 to 2 percent slopes	42.3	27.48	100	1
31	Afton silty clay loam, 0 to 2 percent slopes, occasionally flooded	2.0	1.29	80	2w
309	Allendorf silty clay loam, 0 to 2 percent slopes	5.2	3.39	63	2s
310B	Galva silty clay loam, 2 to 5 percent slopes	10.5	6.85	95	2e
133	Colo silty clay loam, deep loess, 0 to 2 percent slopes, occasionally flooded	43.0	27.95	78	2w
TOTALS		153.9	100%	88.88	1.63

Capability Legend

Increased Limitations and Hazards

Decreased Adaptability and Freedom of Choice Users

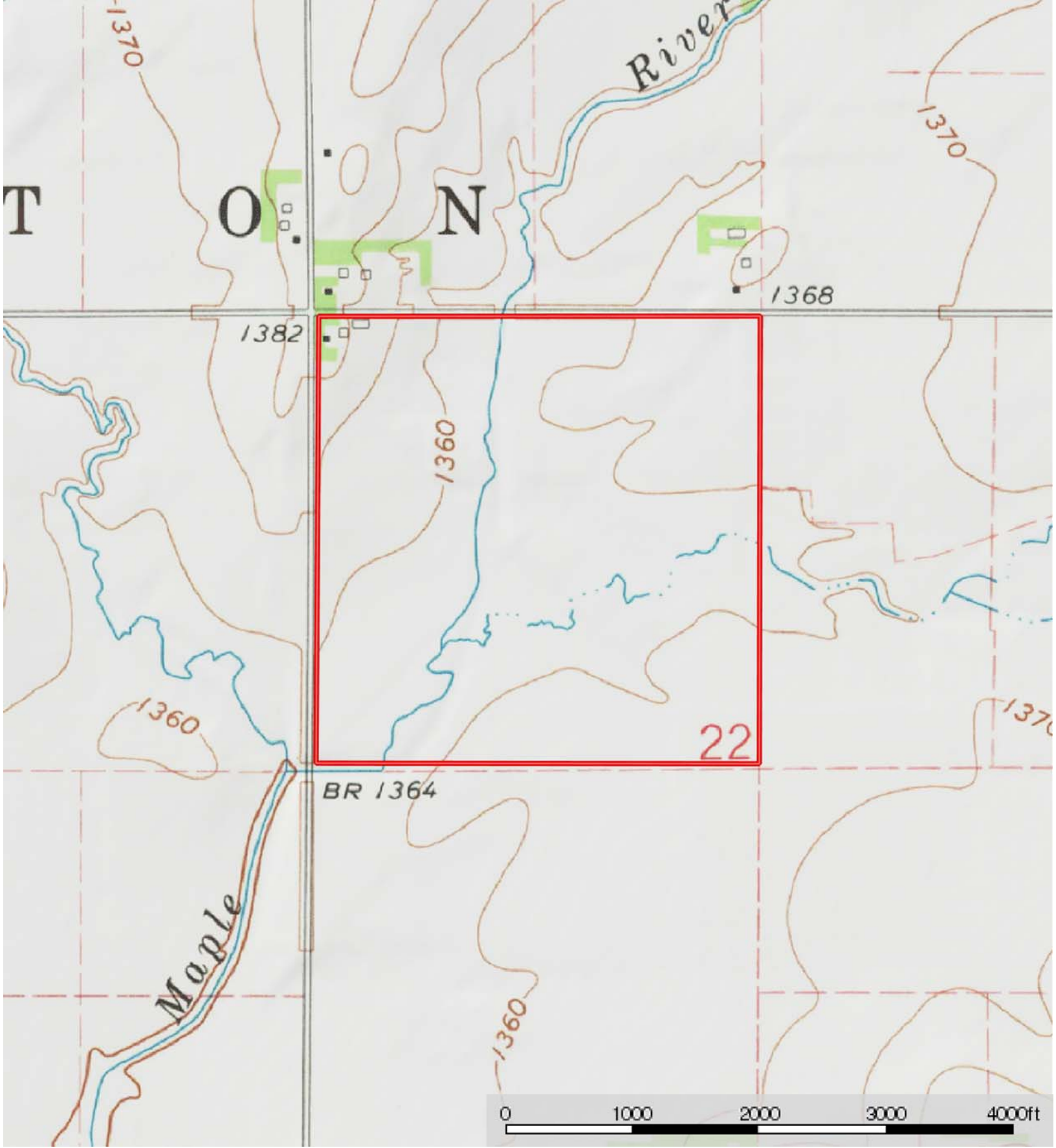
Land, Capability

								
	1	2	3	4	5	6	7	8
'Wild Life'	•	•	•	•	•	•	•	•
Forestry	•	•	•	•	•	•	•	
Limited	•	•	•	•	•	•	•	
Moderate	•	•	•	•	•	•		
Intense	•	•	•	•	•			
Limited	•	•	•	•				
Moderate	•	•	•					
Intense	•	•						
Very Intense	•							

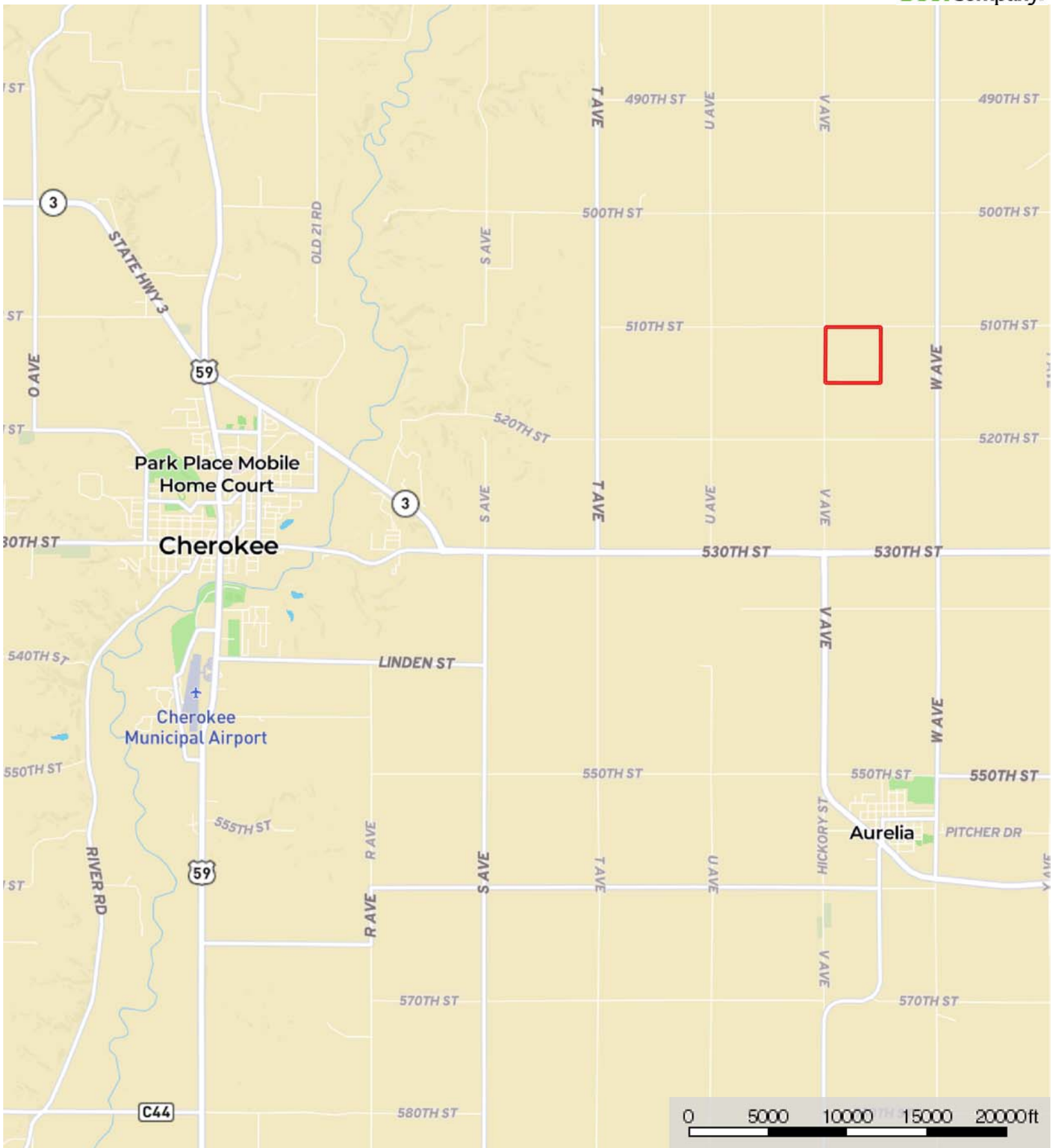
Grazing Cultivation

(c) climatic limitations (e) susceptibility to erosion

(s) soil limitations within the rooting zone (w) excess of water



 Boundary



 Boundary