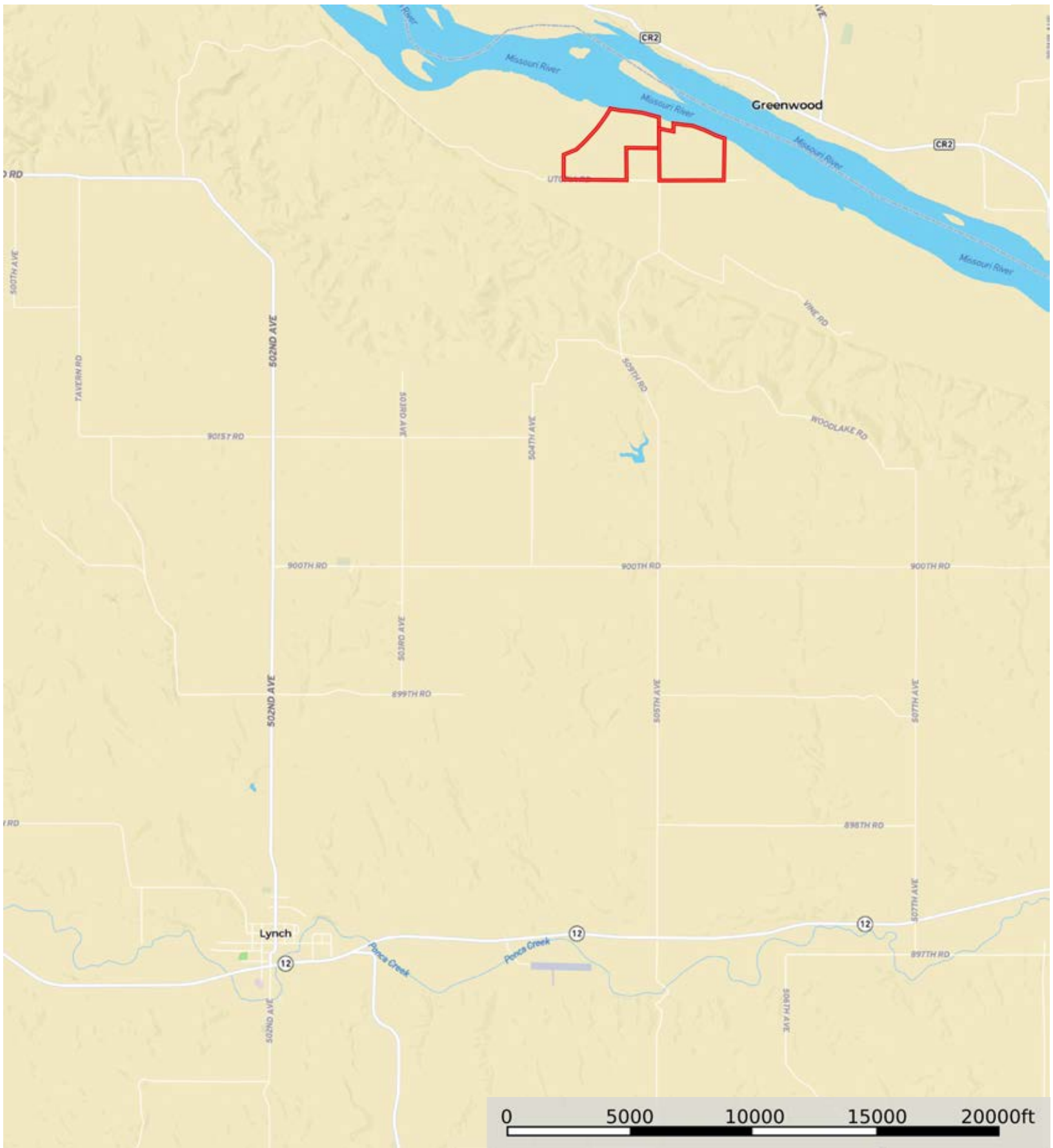
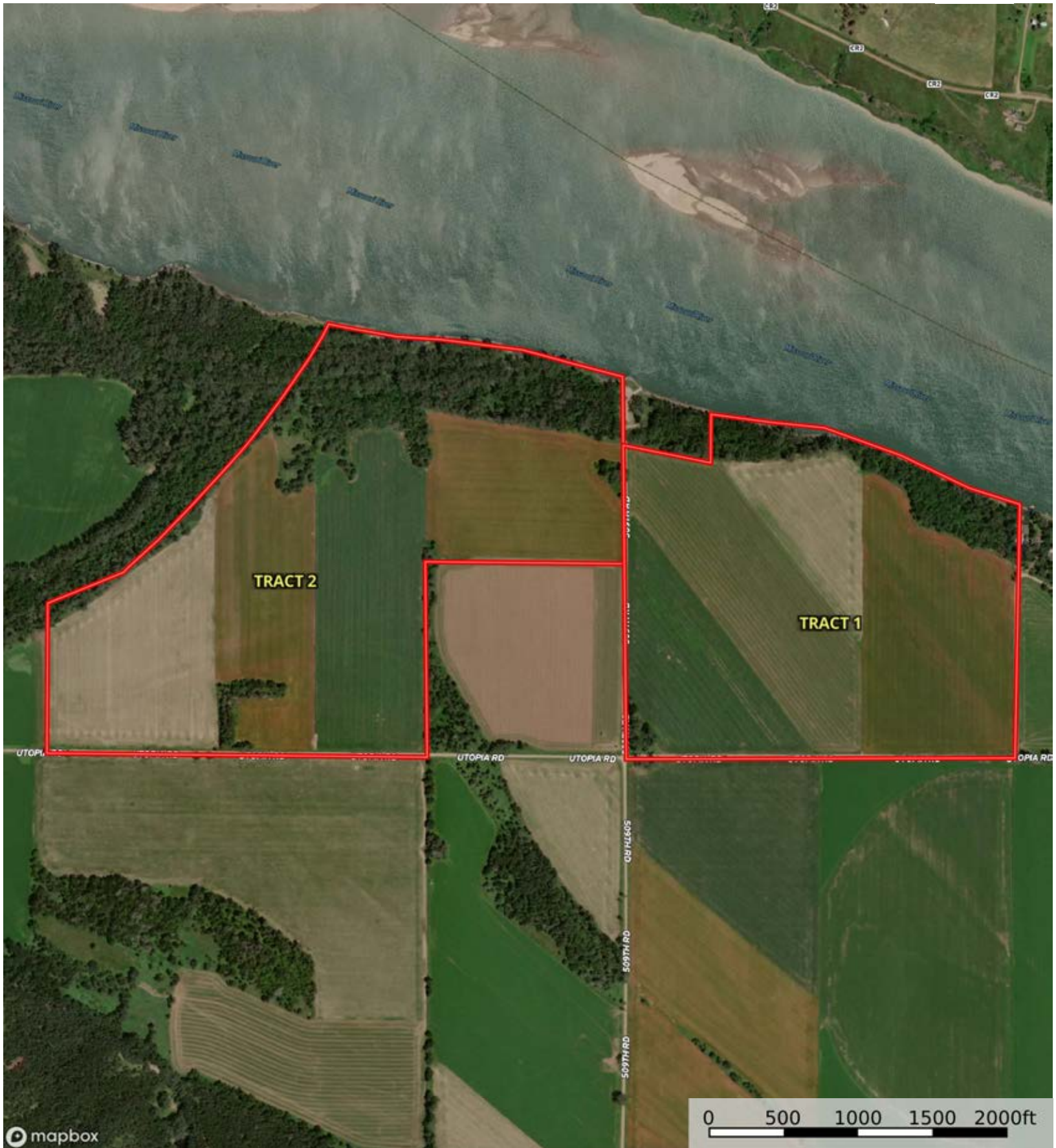


A-08255

Boyd County, Nebraska, 308.51 AC +/-



Boundary



 Boundary



mapbox

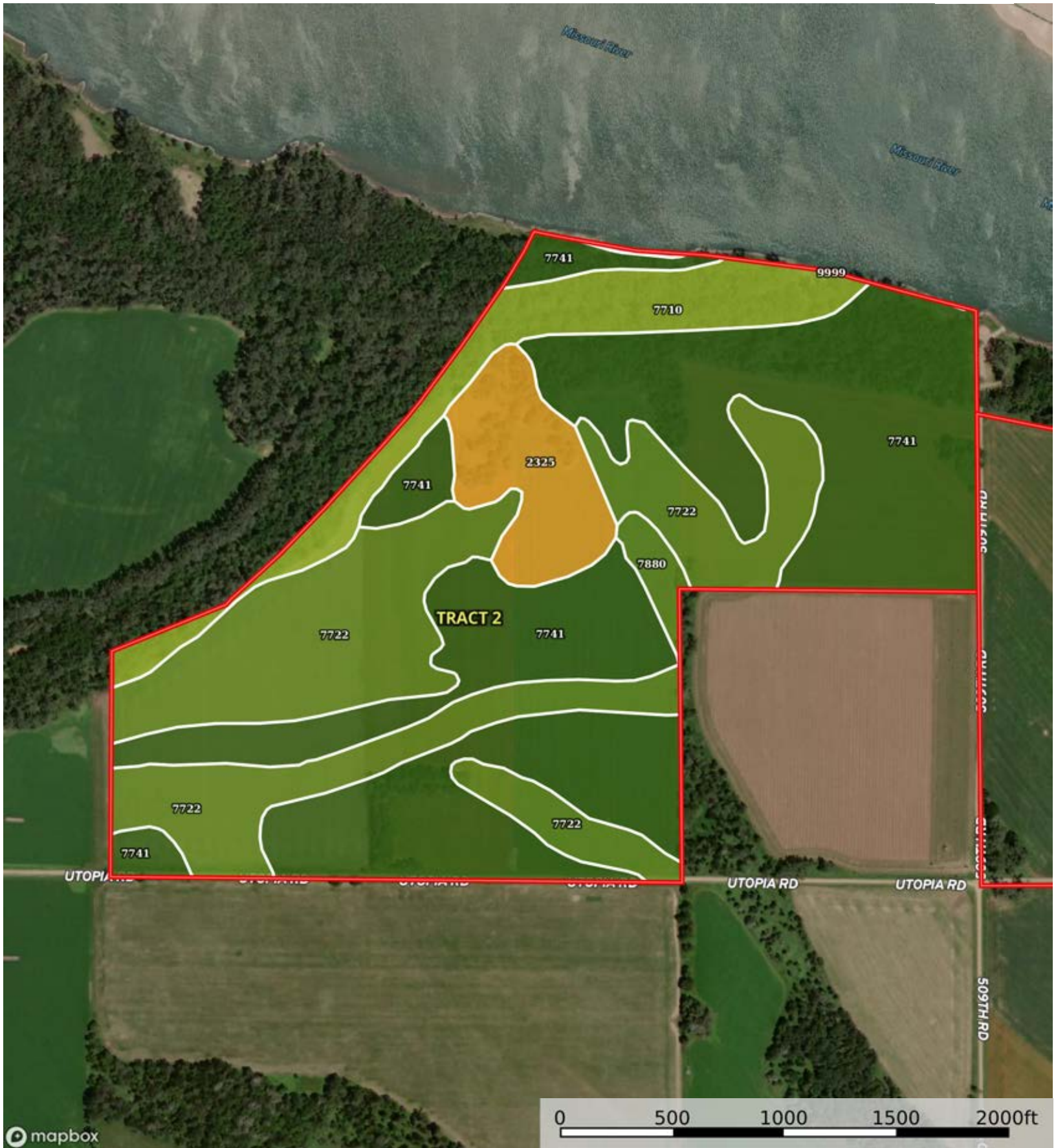
Boundary

|  Boundary 126.12 ac

SOIL CODE	SOIL DESCRIPTION	ACRES	%	CPI	NCCPI	CAP
7741	Haynie silt loam, occasionally flooded	76.38	60.56	0	64	1
7880	Onawa silty clay, occasionally flooded	23.11	18.32	0	55	2w
7722	Blake silty clay loam, occasionally flooded	19.23	15.25	0	67	2w
7710	Albaton silty clay, occasionally flooded	7.28	5.77	52	13	3w
9999	Water	0.12	0.1	0	-	-
TOTALS		126.12(*)	100%	3.0	59.8	1.45

(*) Total acres may differ in the second decimal compared to the sum of each acreage soil. This is due to a round error because we only show the acres of each soil with two decimal.





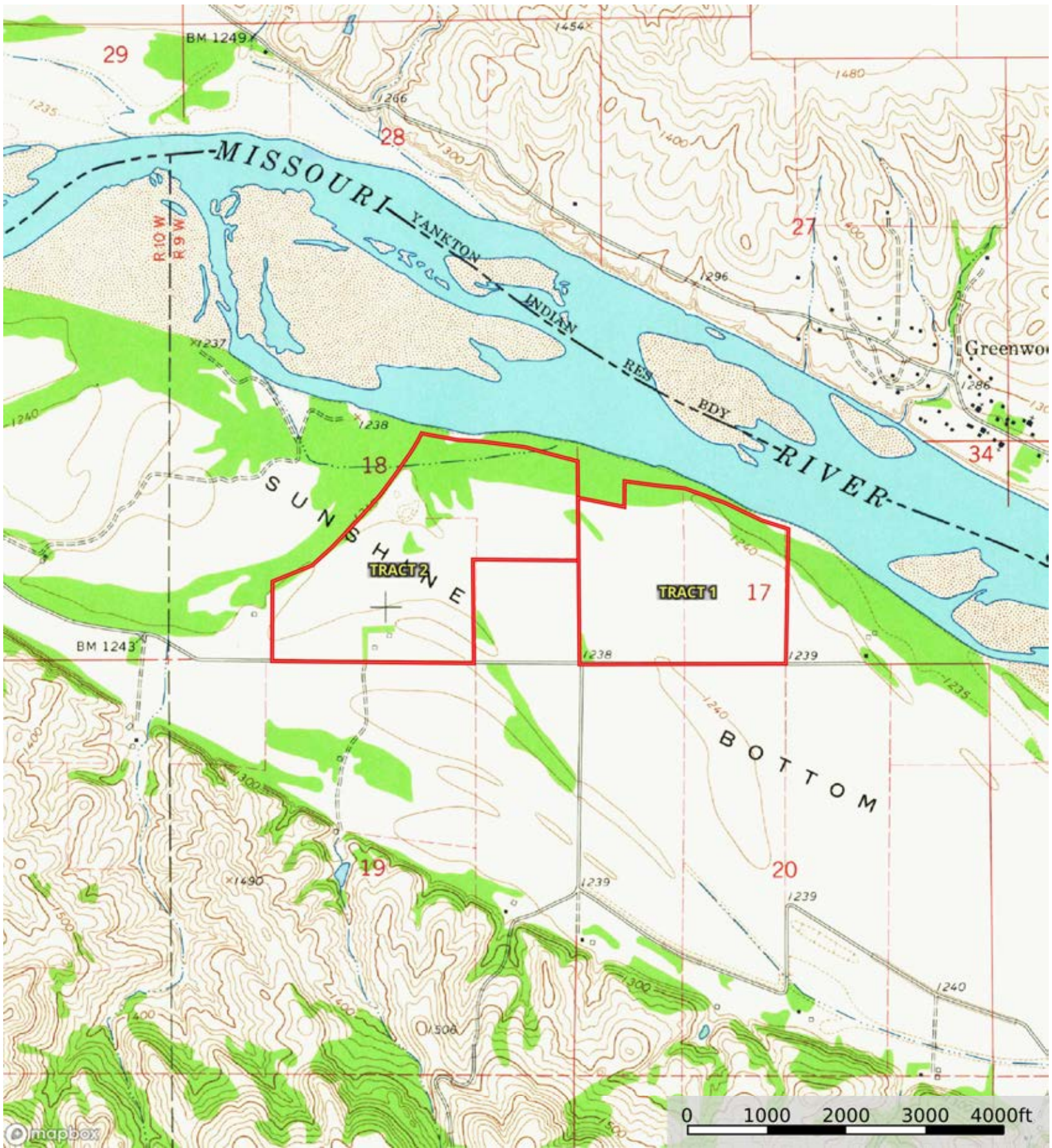
Boundary

|  Boundary 161.86 ac

SOIL CODE	SOIL DESCRIPTION	ACRES	%	CPI	NCCPI	CAP
7741	Haynie silt loam, occasionally flooded	82.96	51.25	0	64	1
7722	Blake silty clay loam, occasionally flooded	49.48	30.57	0	67	2w
7710	Albaton silty clay, occasionally flooded	15.96	9.86	52	13	3w
2325	Inavale Fine Sand, 3 to 11 percent slopes, rarely flooded	11.19	6.91	0	14	6e
7880	Onawa silty clay, occasionally flooded	2.07	1.28	0	55	2w
9999	Water	0.2	0.12	0	-	-
TOTALS		161.86(*)	100%	5.13	56.23	1.86

(*) Total acres may differ in the second decimal compared to the sum of each acreage soil. This is due to a round error because we only show the acres of each soil with two decimal.





 Boundary