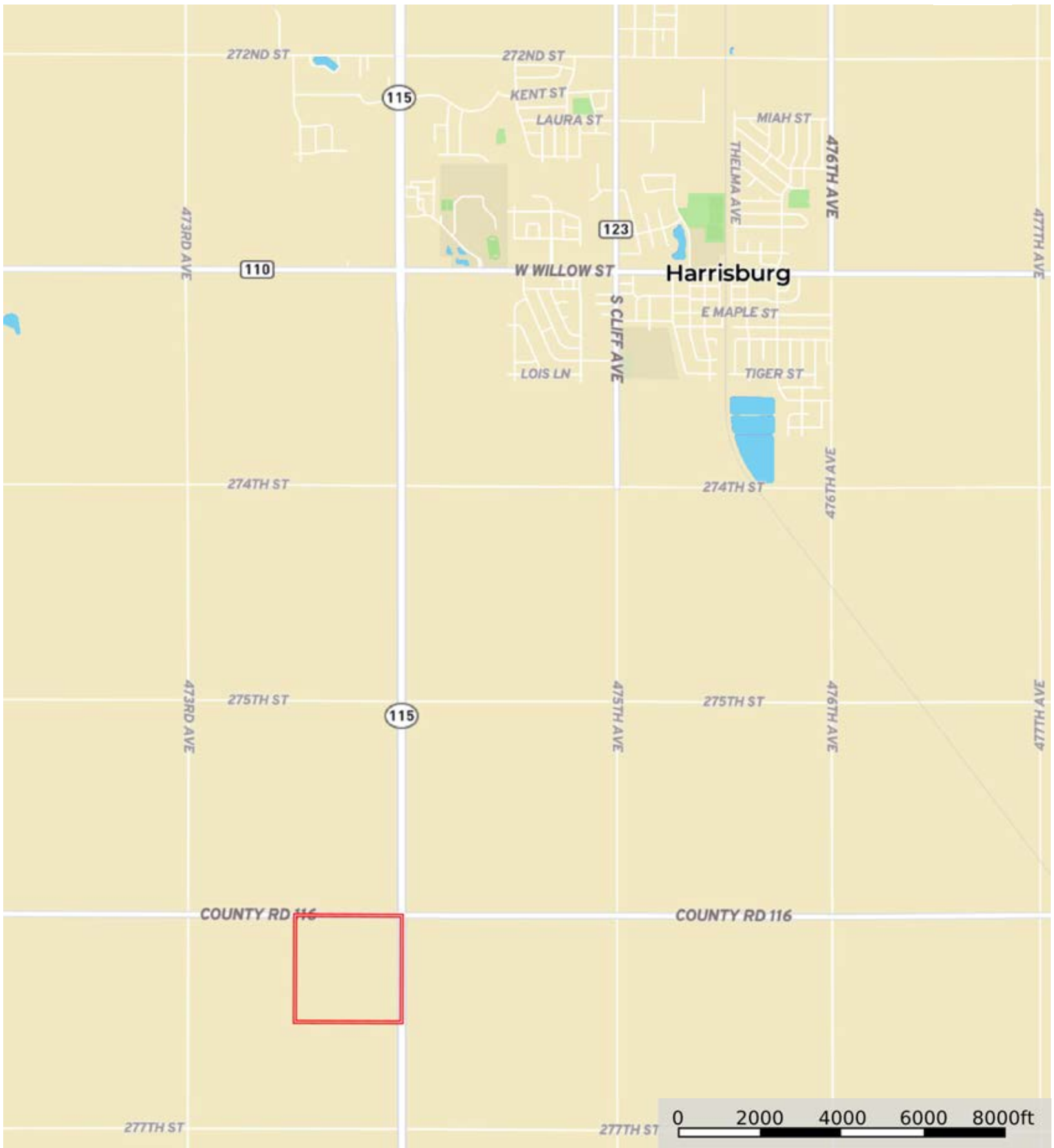



A-10070

Lincoln County, South Dakota, 160 AC +/-

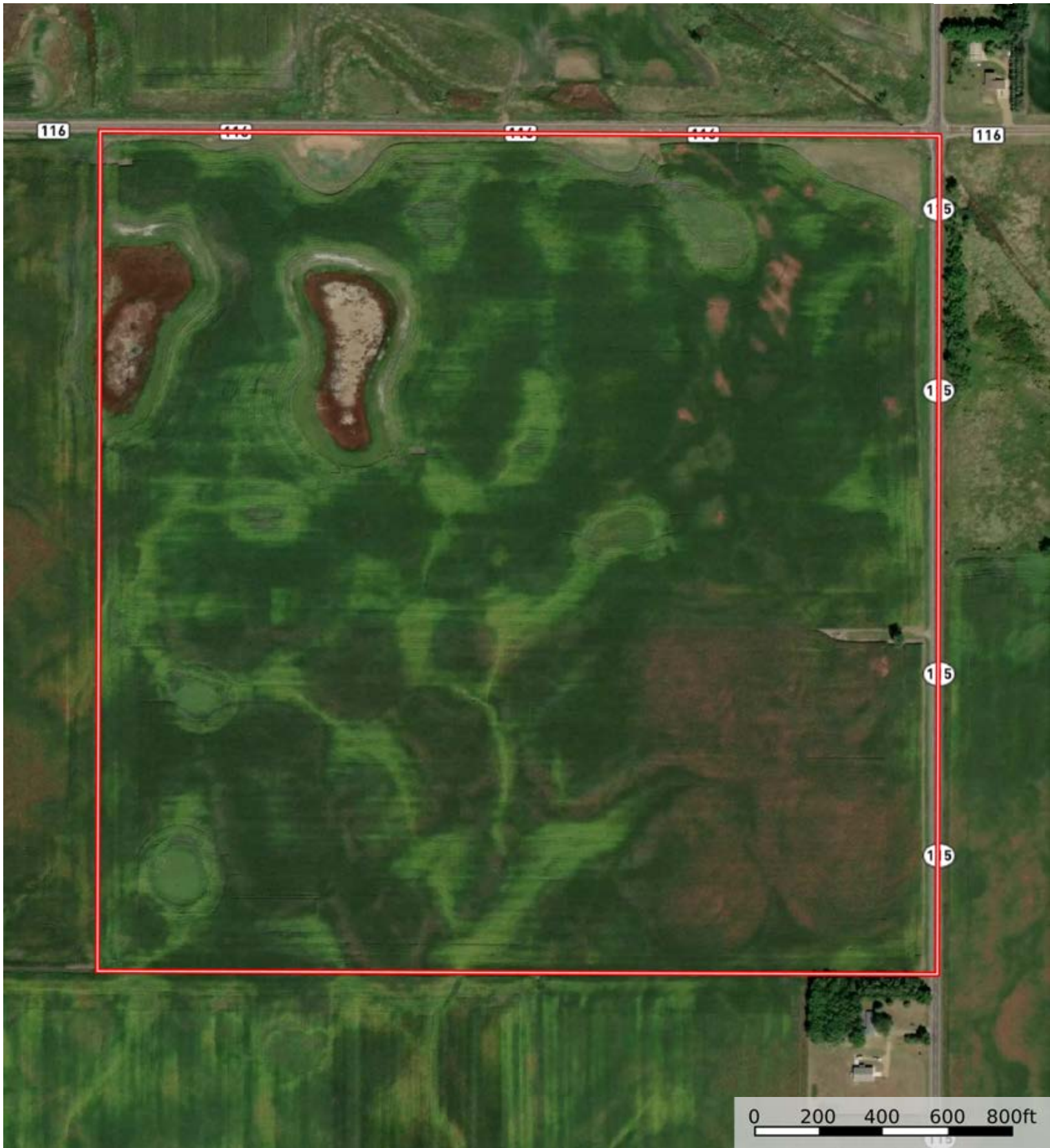



 Boundary



The information contained herein was obtained from sources deemed to be reliable. Land id™ Services makes no warranties or guarantees as to the completeness or accuracy thereof.

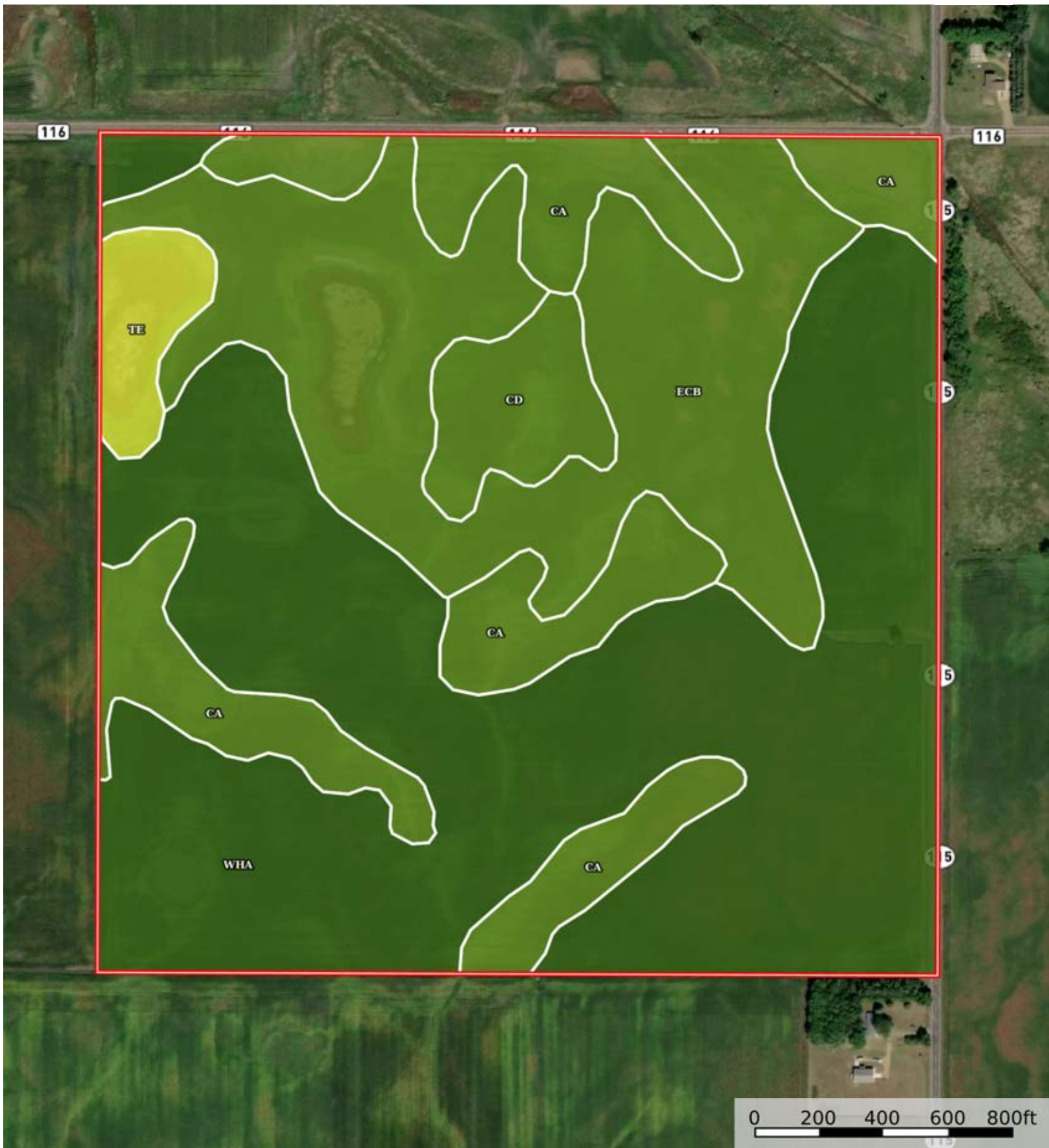
A-10070
Lincoln County, South Dakota, 160 AC +/-




 Boundary

A-10070

Lincoln County, South Dakota, 160 AC +/-



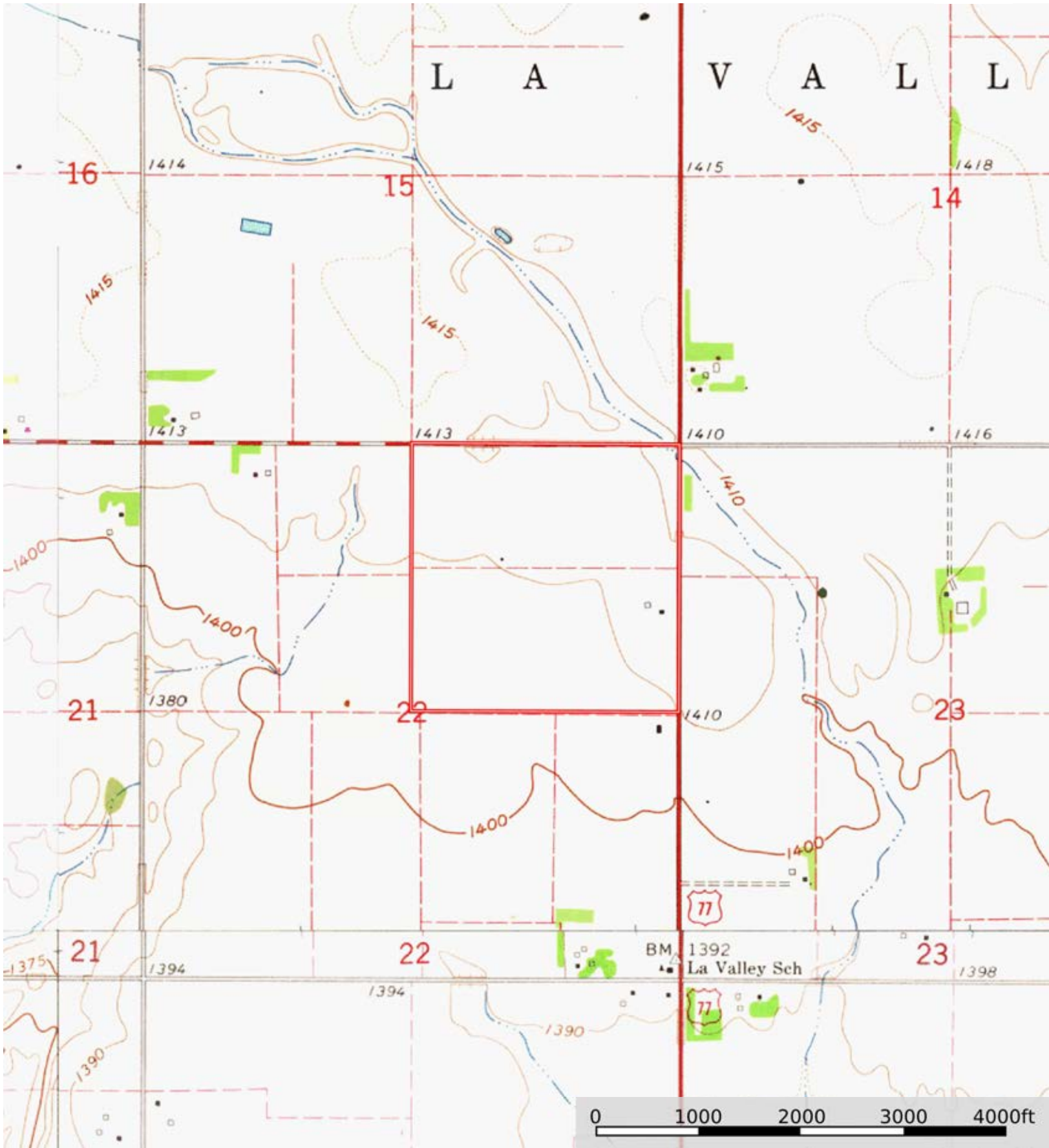
 Boundary


|  Boundary 157.78 ac

SOIL CODE	SOIL DESCRIPTION	ACRES	%	CPI	NCCPI	CAP
WhA	Wentworth-Chancellor silty clay loams, 0 to 2 percent slopes	80.35	50.93	89	57	1
EcB	Egan-Chancellor silty clay loams, 0 to 4 percent slopes	39.83	25.24	83	51	2e
Ca	Chancellor-Tetonka complex, 0 to 2 percent slopes	27.5	17.43	75	56	2w
Cd	Chancellor-Viborg silty clay loams	6.02	3.82	87	46	2w
Te	Tetonka silt loam, 0 to 2 percent slopes, frequently ponded	4.08	2.59	60	26	4w
TOTALS		157.78(*)	100%	84.22	54.09	1.54

(*) Total acres may differ in the second decimal compared to the sum of each acreage soil. This is due to a round error because we only show the acres of each soil with two decimal.





 Boundary