

**A-11277**  
**Hinton**  
 Adair County, Iowa

Latitude: 41.4011°N  
 Longitude: -94.5156°W  
 Imagery Source: USDA NAIP  
 Soil Data Source: USDA NRCS  
 Boundaries Are Approximate



Sec. 9

Sec. 10

T76N R32W

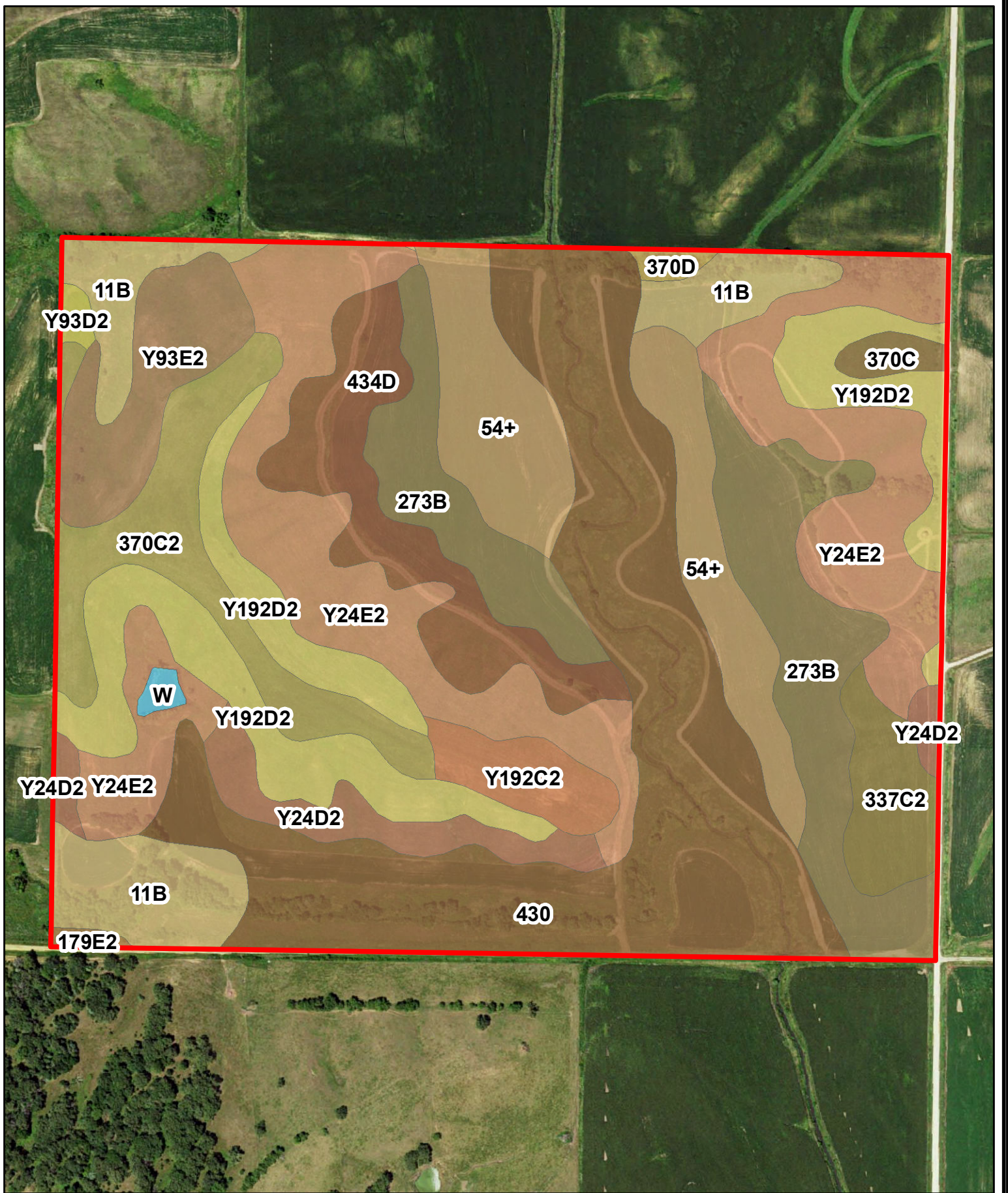
Sec. 16

Sec. 15



**A-11277**  
**Hinton**  
**Adair County, Iowa**

Latitude: 41.3923°N  
Longitude: -94.5345°W  
Imagery Source: USDA NAIP  
Soil Data Source: USDA NRCS  
Boundaries Are Approximate



**A-11277  
Hinton  
Adair County, Iowa**

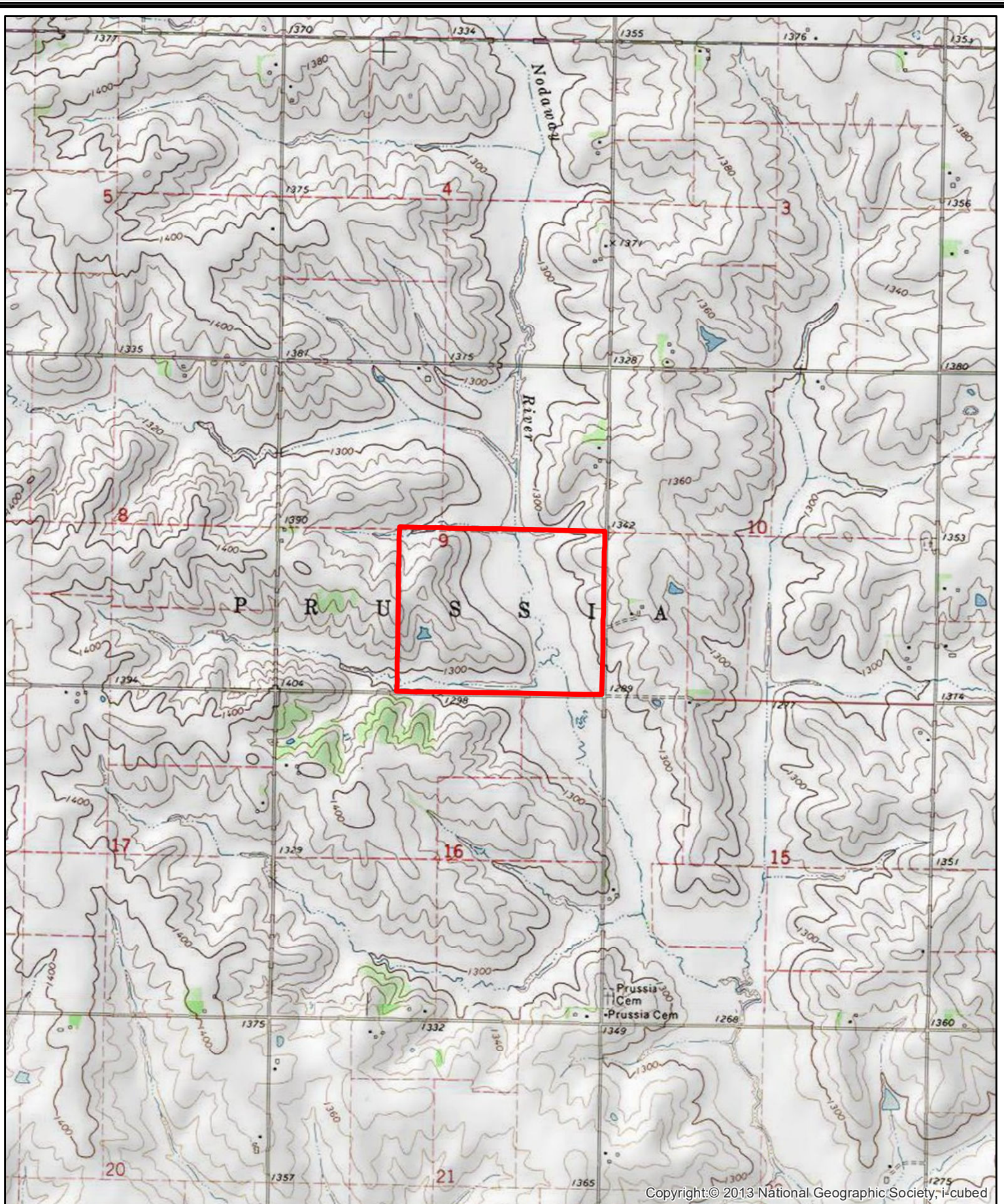
Latitude: 41.3923°N  
 Longitude: -94.5345°W  
 Imagery Source: USDA NAIP  
 Soil Data Source: USDA NRCS  
 Boundaries Are Approximate

MAP SYMBOL	NAME	NON IRR		
		LCC	CSR2	ACRES
430	Ackmore silt loam, 0 to 2 percent slopes, occasionally flooded	IIw	77	43.5
Y24E2	Shelby clay loam, dissected till plain, 14 to 18 percent slopes, eroded	IVe	35	34.7
273B	Olmitz loam, 2 to 5 percent slopes	Ile	89	21.2
Y192D2	Adair clay loam, dissected till plain, 9 to 14 percent slopes, eroded	IVe	29	19.2
54+	Zook silt loam, 0 to 2 percent slopes, occasionally flooded, overwash	IIw	69	16.3
11B	Colo, occasionally flooded-Ely silty clay loams, dissected till plain, 2 to 5 percent slopes	IIw	80	12.9
434D	Arbor silty clay loam, 9 to 14 percent slopes	IIIe	61	11.4
370C2	Sharpsburg silty clay loam, 5 to 9 percent slopes, eroded	IIIe	80	11.2
Y93E2	Shelby-Adair clay loams, dissected till plain, 14 to 18 percent slopes, eroded	IVe	30	7.7
Y24D2	Shelby clay loam, dissected till plain, 9 to 14 percent slopes, eroded	IIIe	49	6.2
337C2	Dickman, loamy substratum-Sharpsburg complex, 5 to 9 percent slopes, moderately eroded	IIIe	54	4.8
Y192C2	Adair clay loam, dissected till plain, 5 to 9 percent slopes, eroded	IIIe	51	3.9
370C	Sharpsburg silty clay loam, 5 to 9 percent slopes	IIIe	82	1.2
370D	Sharpsburg silty clay loam, 9 to 14 percent slopes	IIIe	59	0.7
Y93D2	Shelby-Adair clay loams, dissected till plain, 9 to 14 percent slopes, eroded	IIIe	41	0.6
W	Water		0	0.5
179E2	Gara loam, dissected till plain, 14 to 18 percent slopes, eroded	VIe	32	0.4
<b>TOTAL</b>			<b>60.7</b>	<b>196.4</b>



**A-11277**  
**Hinton**  
**Adair County, Iowa**

Latitude: 41.3923°N  
Longitude: -94.5345°W  
Imagery Source: USDA NAIP  
Soil Data Source: USDA NRCS  
Boundaries Are Approximate



**A-11277**  
**Hinton**  
**Adair County, Iowa**

Latitude: 41.3923°N  
Longitude: -94.5345°W  
Imagery Source: USDA NAIP  
Soil Data Source: USDA NRCS  
Boundaries Are Approximate