

Sec. 12

T80N R27W

Sec. 13

205th St

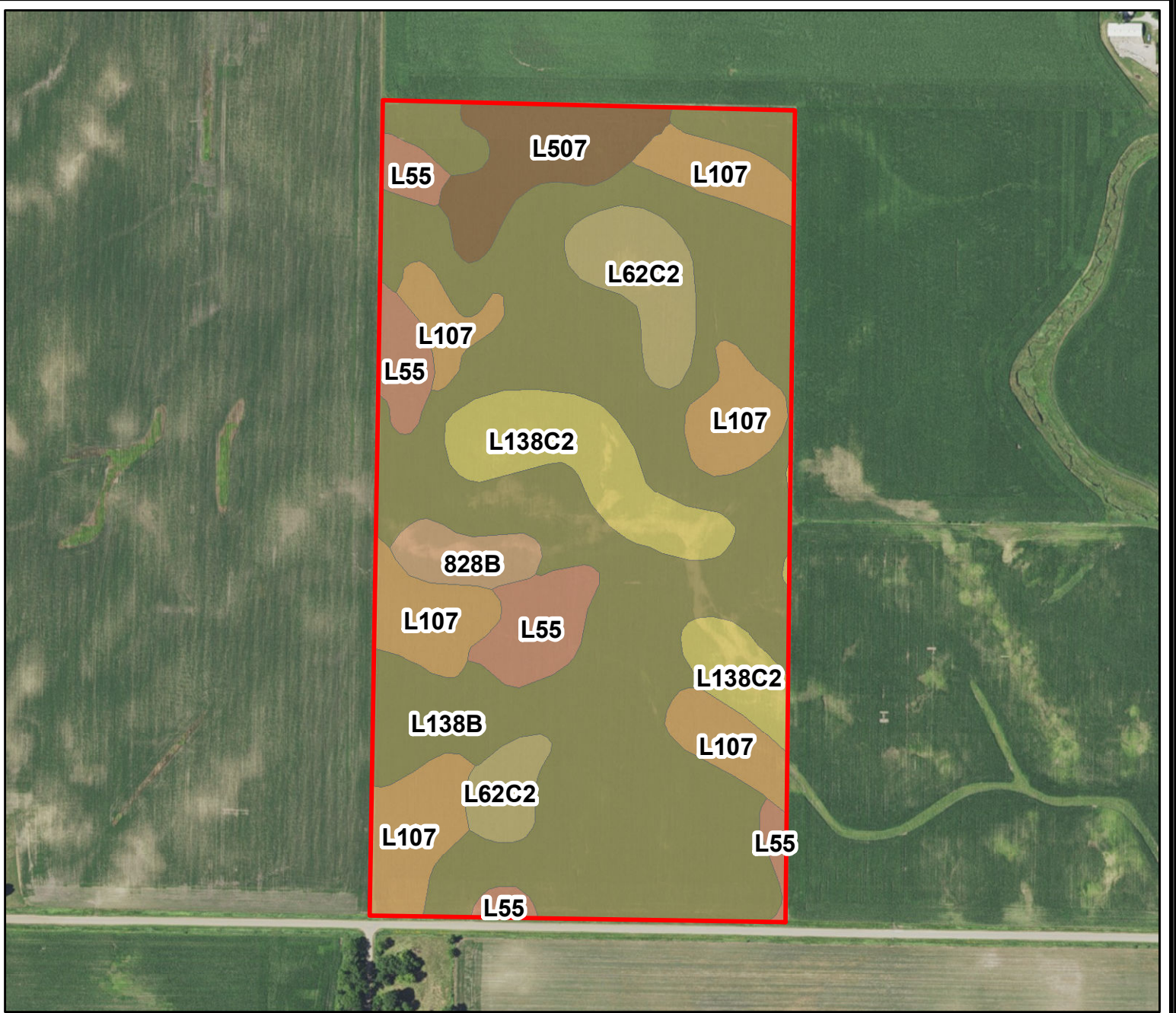
Reno Pl



A-11475  
Dallas Co., IA

Latitude: 41.7429°N  
Longitude: -93.9384°W  
Imagery Source: USDA NAIP  
Soil Data Source: USDA NRCS  
Boundaries Are Approximate





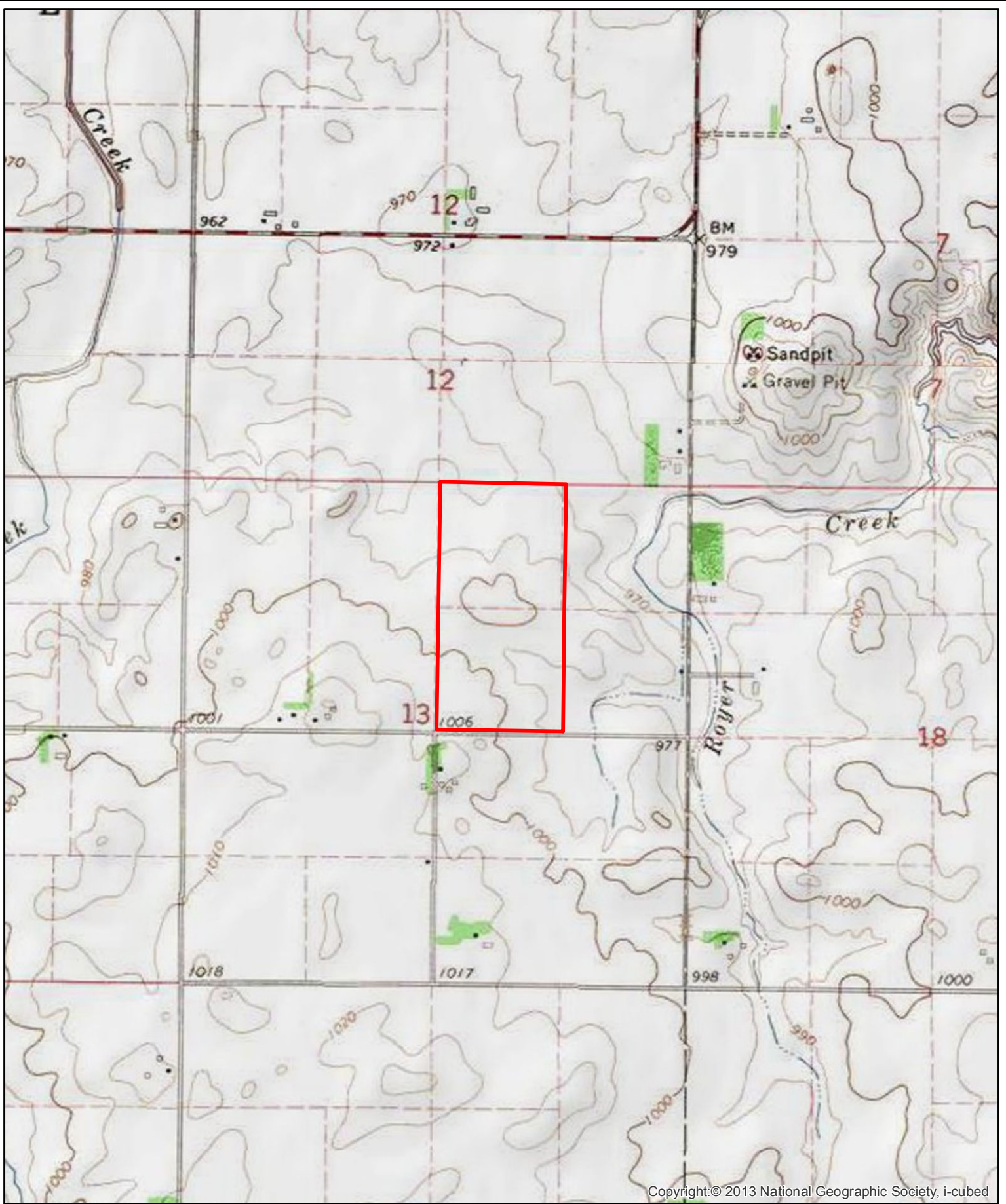
MAP SYMBOL	NAME	NON IRR		
		LCC	CSR2	ACRES
L138B	Clarion loam, Bemis moraine, 2 to 6 percent slopes	Ile	88	44.7
L107	Webster clay loam, Bemis moraine, 0 to 2 percent slopes	IIw	88	12.4
L138C2	Clarion loam, Bemis moraine, 6 to 10 percent slopes, moderately eroded	IIIe	83	7.1
L55	Nicollet loam, 1 to 3 percent slopes	Ie	91	5.4
L62C2	Storden loam, Bemis moraine, 6 to 10 percent slopes, moderately eroded	IIIe	64	4.9
L507	Canisteo clay loam, Bemis moraine, 0 to 2 percent slopes	IIw	87	4.3
828B	Zenor sandy loam, 2 to 5 percent slopes	IIIe	52	1.7
<b>TOTAL</b>			<b>85.5</b>	<b>80.5</b>



**A-11475  
Dallas Co., IA**

Latitude: 41.7429°N  
 Longitude: -93.9384°W  
 Imagery Source: USDA NAIP  
 Soil Data Source: USDA NRCS  
 Boundaries Are Approximate



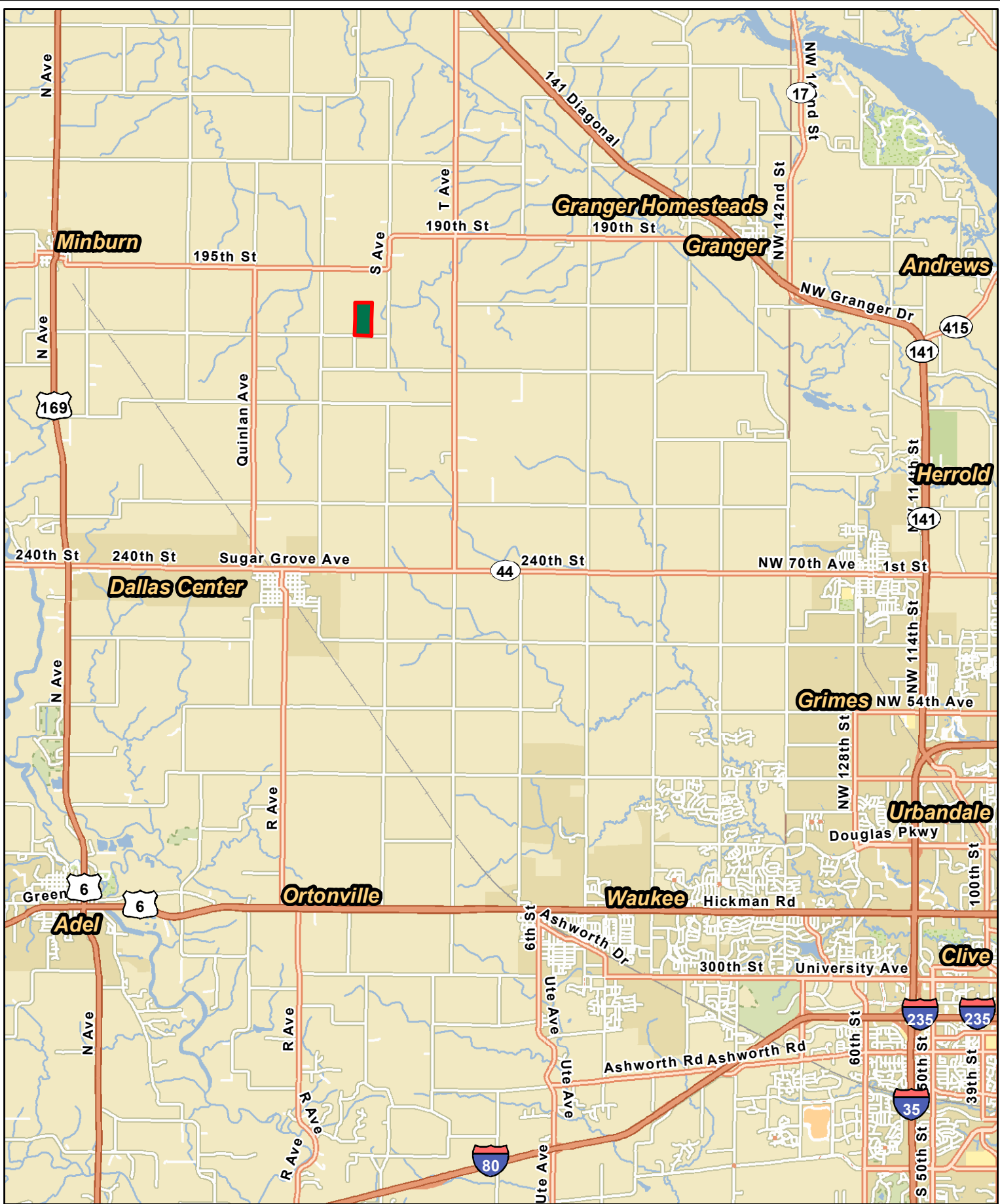


Copyright: © 2013 National Geographic Society, i-cubed



**A-11475**  
**Dallas Co., IA**

Latitude: 41.7429°N  
Longitude: -93.9384°W  
Imagery Source: USDA NAIP  
Soil Data Source: USDA NRCS  
Boundaries Are Approximate



**A-11475**  
**Dallas Co., IA**

Latitude: 41.6806°N  
 Longitude: -93.8975°W  
 Imagery Source: USDA NAIP  
 Soil Data Source: USDA NRCS  
 Boundaries Are Approximate