

A-14302

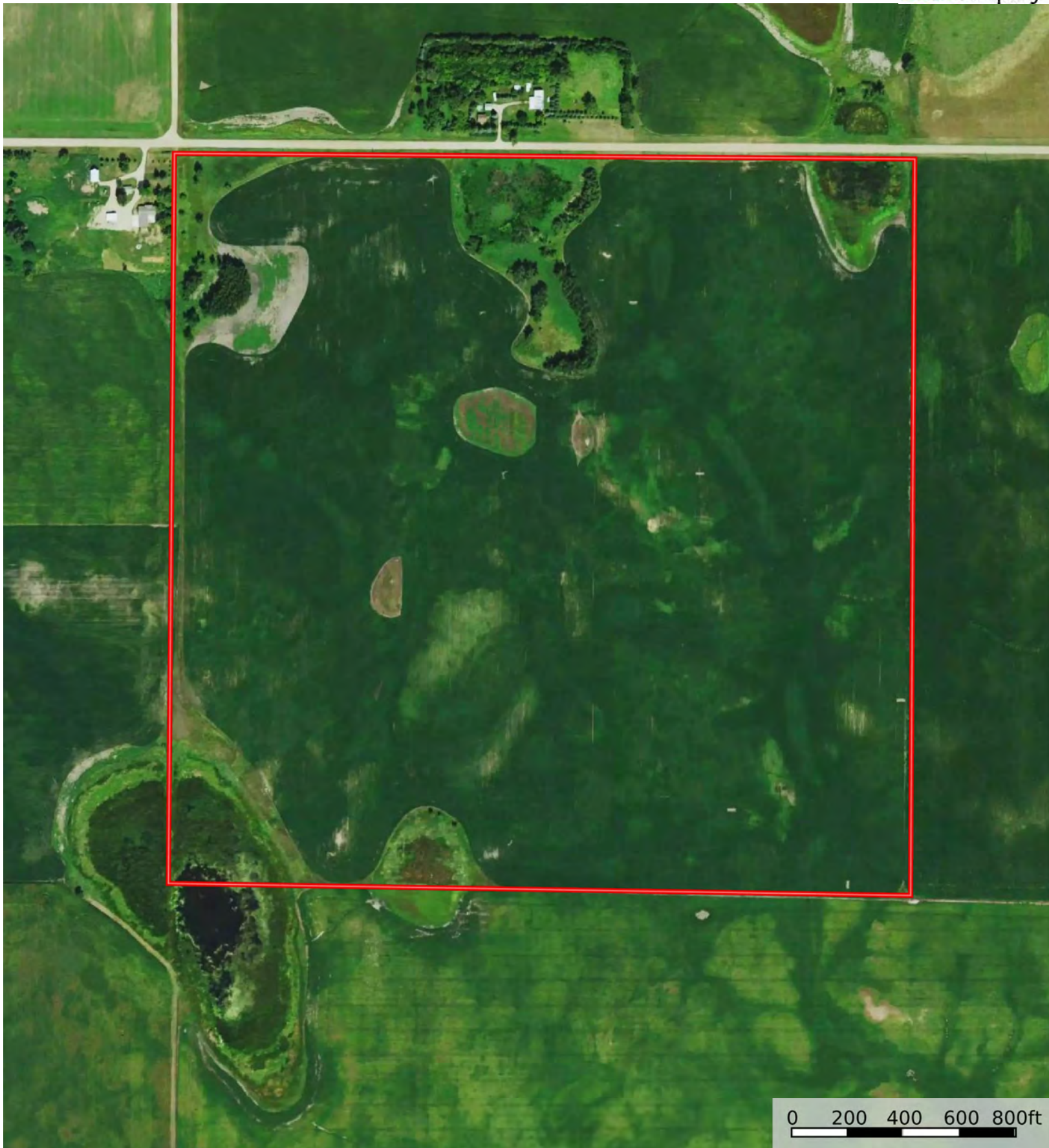
Codington County, South Dakota, 159.49 AC +/-




 Boundary

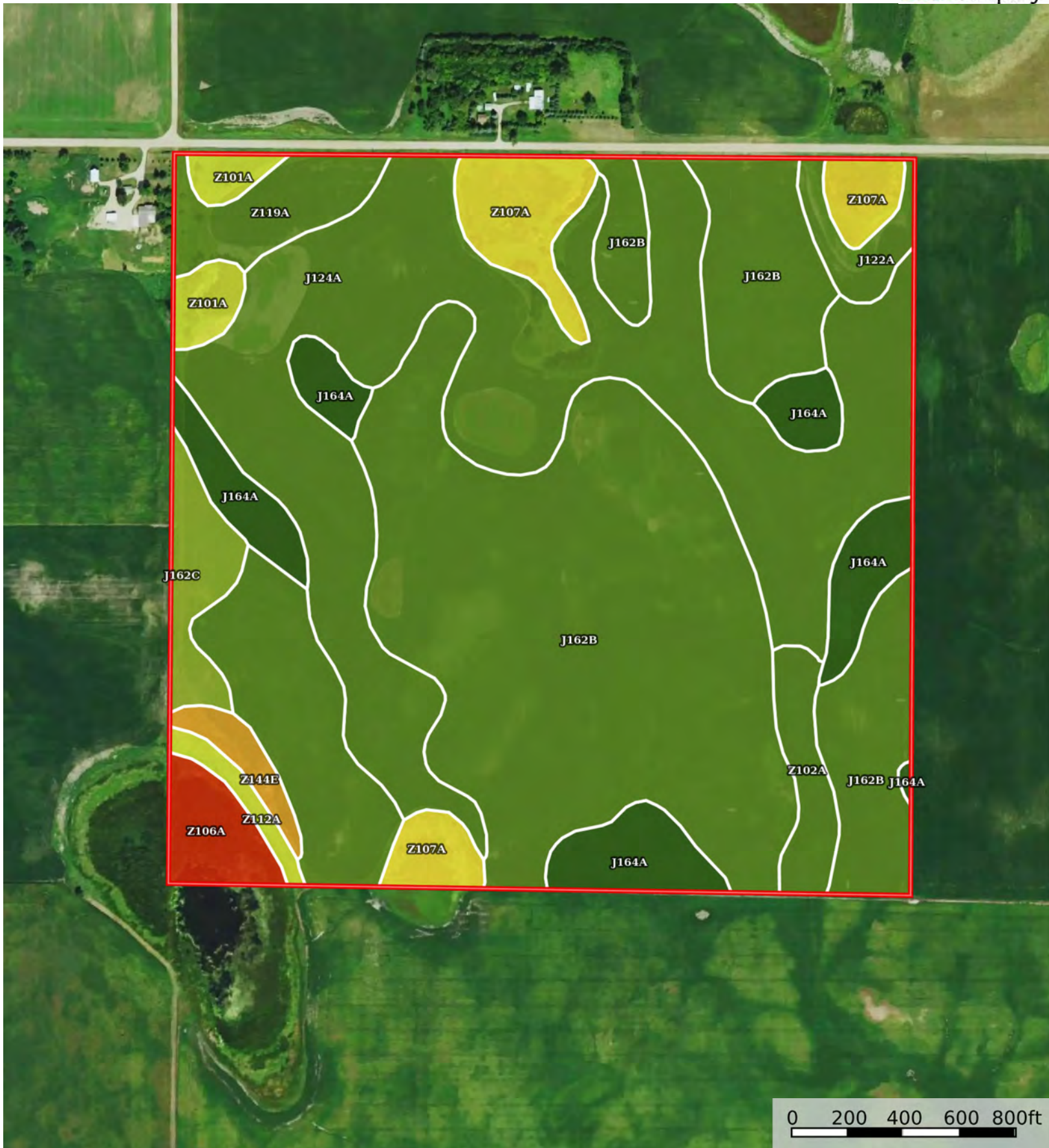
A-14302

Codington County, South Dakota, 159.49 AC +/-



0 200 400 600 800ft

 Boundary



 Boundary

|  Boundary 159.19 ac

SOIL CODE	SOIL DESCRIPTION	ACRES	%	CPI	NCCPI	CAP
J162B	Poinsett-Buse-Waubay complex, 1 to 6 percent slopes	71.89	45.16	81	72	2e
J124A	Cubden-Tonka silty clay loams, coteau, 0 to 2 percent slopes	46.63	29.29	71	60	2s
J164A	Poinsett-Waubay silty clay loams, 0 to 2 percent slopes	11.42	7.17	93	77	1
Z107A	Parnell silty clay loam, coteau, 0 to 1 percent slopes	7.72	4.85	33	25	5w
Z119A	Hamerly-Balaton loams, coteau, 0 to 3 percent slopes	4.37	2.75	70	67	2s
J162C	Poinsett-Buse-Waubay complex, 2 to 9 percent slopes	3.58	2.25	70	69	3e
Z102A	Badger-Tonka silty clay loams, coteau, 0 to 1 percent slopes	3.09	1.94	73	42	2w
Z106A	Southam silty clay loam, 0 to 1 percent slopes	3.03	1.9	10	23	8w
Z101A	Tonka silty clay loam, 0 to 1 percent slopes	2.47	1.55	58	37	4w
J122A	Cubden silty clay loam, 0 to 2 percent slopes	2.26	1.42	77	74	2s
Z144E	Buse-Barnes loams, coteau, 9 to 20 percent slopes	1.57	0.99	42	50	6e
Z112A	Vallers-Hamerly loams, coteau, 0 to 2 percent slopes	1.16	0.73	51	49	4w
TOTALS		159.19(*)	100%	73.53	63.95	2.3









(\*) Total acres may differ in the second decimal compared to the sum of each acreage soil. This is due to a round error because we only show the acres of each soil with two decimal.

## Capability Legend

Increased Limitations and Hazards

Decreased Adaptability and Freedom of Choice Users

Land, Capability

								
	1	2	3	4	5	6	7	8
'Wild Life'	•	•	•	•	•	•	•	•
Forestry	•	•	•	•	•	•	•	
Limited	•	•	•	•	•	•	•	
Moderate	•	•	•	•	•	•		
Intense	•	•	•	•	•			
Limited	•	•	•	•				
Moderate	•	•	•					
Intense	•	•						
Very Intense	•							

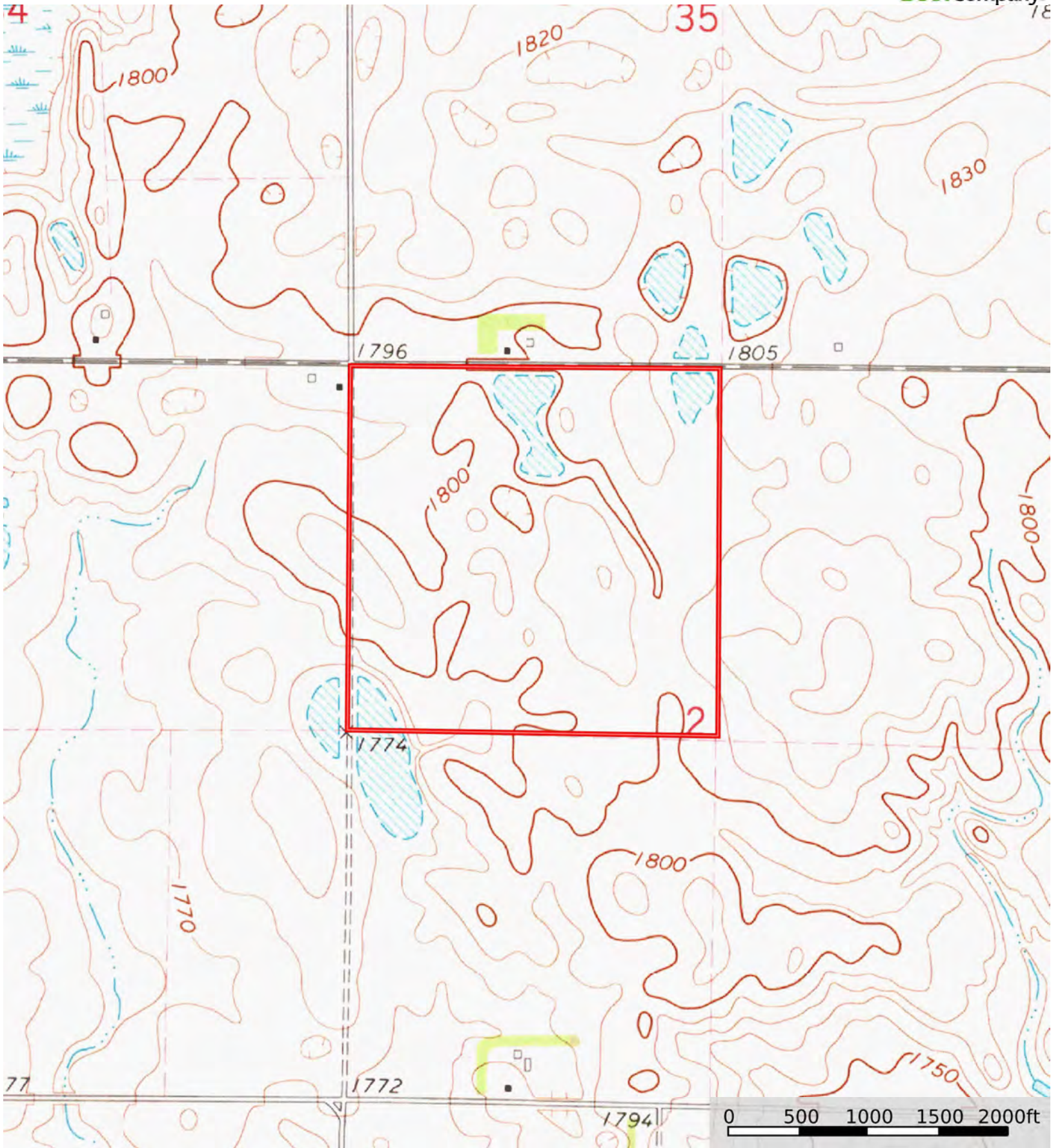
### Grazing Cultivation

(c) climatic limitations (e) susceptibility to erosion

(s) soil limitations within the rooting zone (w) excess of water

A-14302

Codington County, South Dakota, 159.49 AC +/-



Boundary