

A-14352
John Pierson
Day County, South Dakota

Latitude: 45.5468°N
Longitude: -97.8878°W
Imagery Source: USDA NAIP
Soil Data Source: USDA NRCS
Boundaries Are Approximate

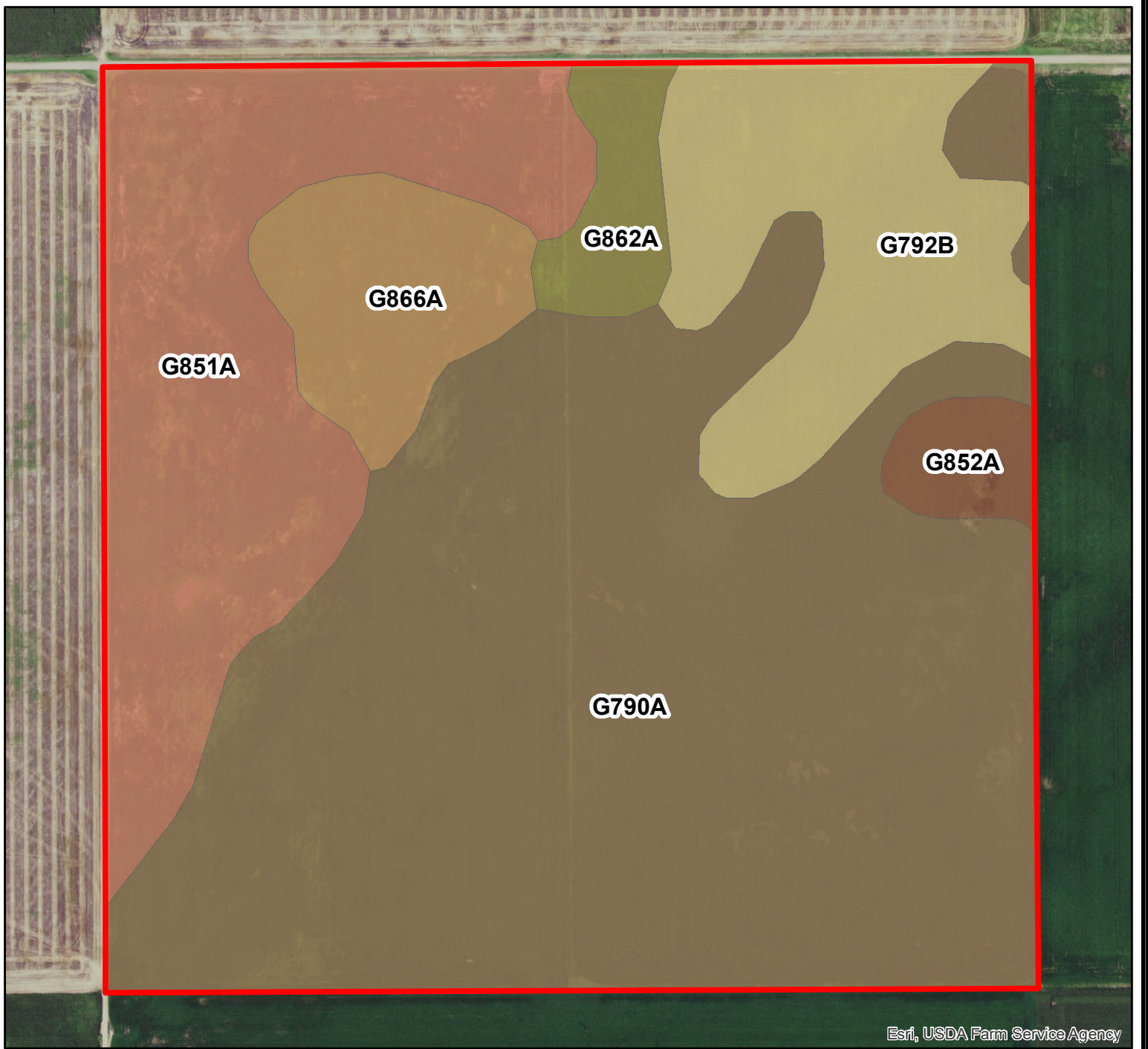


Esri, USDA Farm Service Agency



A-14352
John Pierson
Day County, South Dakota

Latitude: 45.5555°N
Longitude: -97.9338°W
Imagery Source: USDA NAIP
Soil Data Source: USDA NRCS
Boundaries Are Approximate



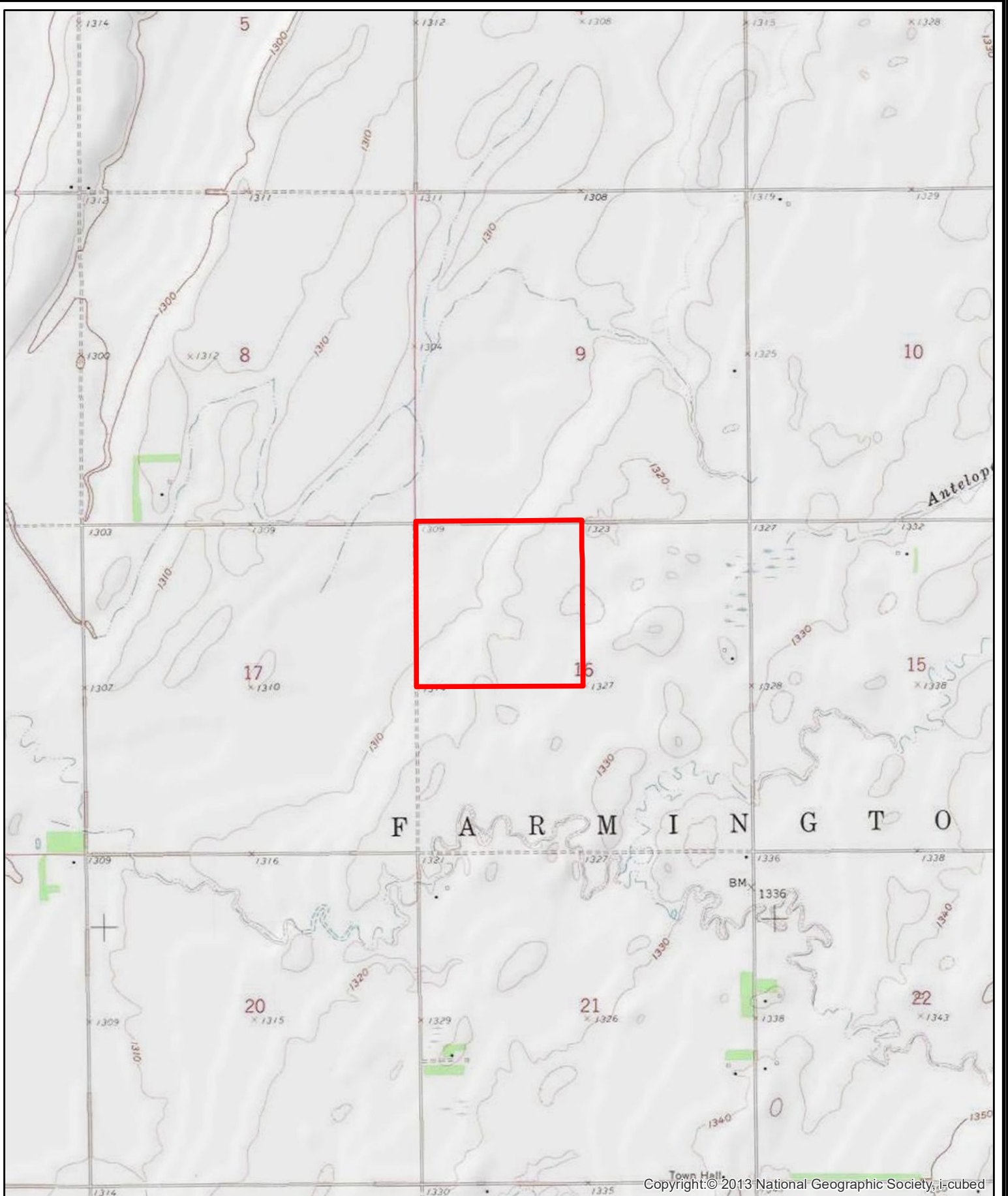
Esri, USDA Farm Service Agency

MAP SYMBOL	NAME	NON-IRR LCC	PRODUCTIVITY INDEX	ACRES
G790A	Kranzburg-Brookings silt loams, 0 to 2 percent slopes	IIc	91	91.6
G851A	Nahon-Aberdeen-Exline silt loams, 0 to 2 percent slopes	IVs	46	32.8
G792B	Kranzburg-Brookings-Buse complex, 0 to 6 percent slopes	IIe	82	19.5
G866A	Harmony-Aberdeen silty clay loams, 0 to 2 percent slopes	IIs	80	10.0
G862A	Harmony-Beotia silt loams, 0 to 2 percent slopes	IIs	92	4.5
G852A	Nahon-Aberdeen-Exline silt loams, till substratum, 0 to 2 percent slopes	IVs	45	3.1
TOTAL			79.2	161.5



A-14352
John Pierson
Day County, South Dakota

Latitude: 45.5555°N
 Longitude: -97.9338°W
 Imagery Source: USDA NAIP
 Soil Data Source: USDA NRCS
 Boundaries Are Approximate



A-14352
John Pierson
Day County, South Dakota

Latitude: 45.5555°N
Longitude: -97.9338°W
Imagery Source: USDA NAIP
Soil Data Source: USDA NRCS
Boundaries Are Approximate