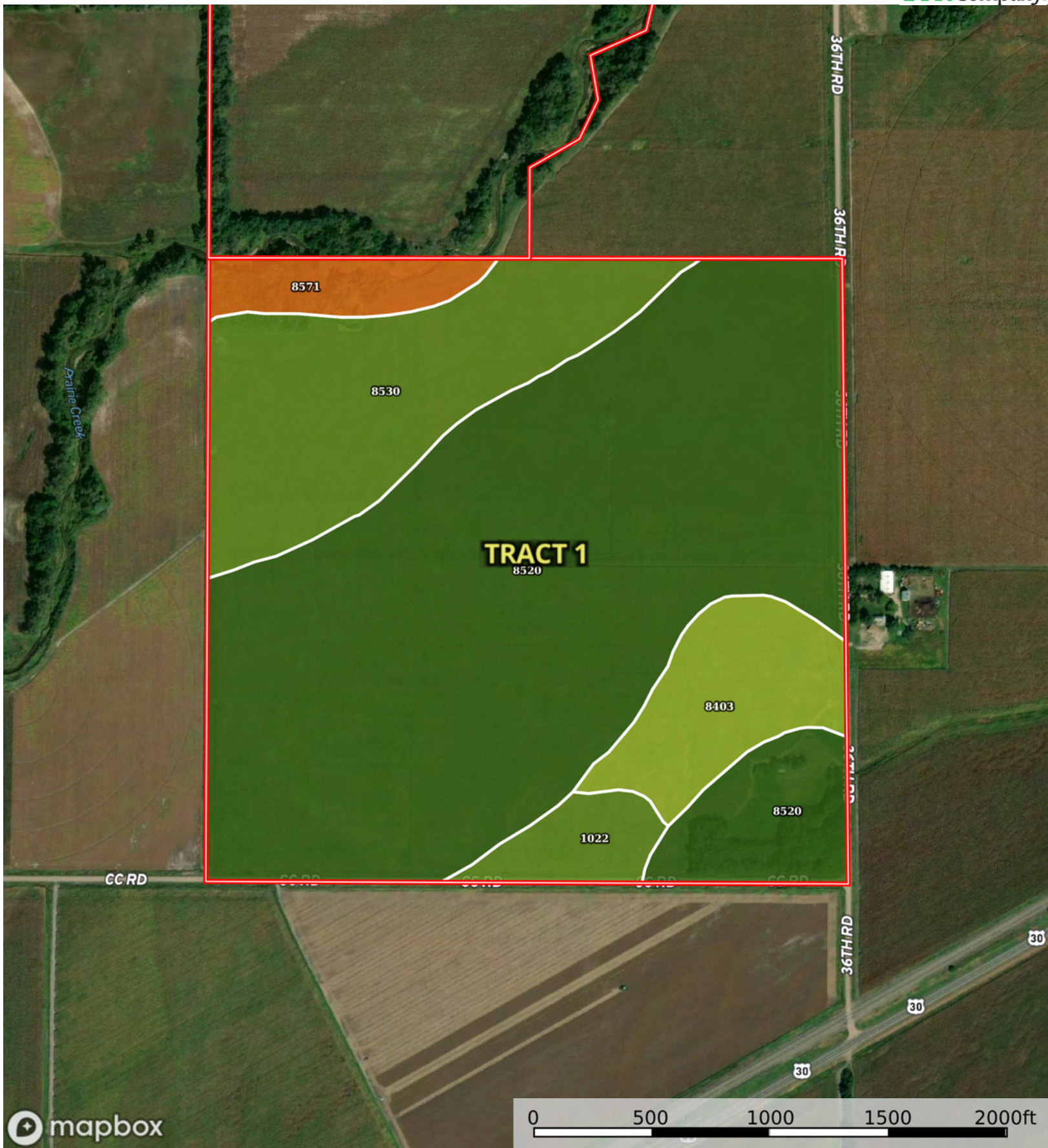


Boundary



Boundary

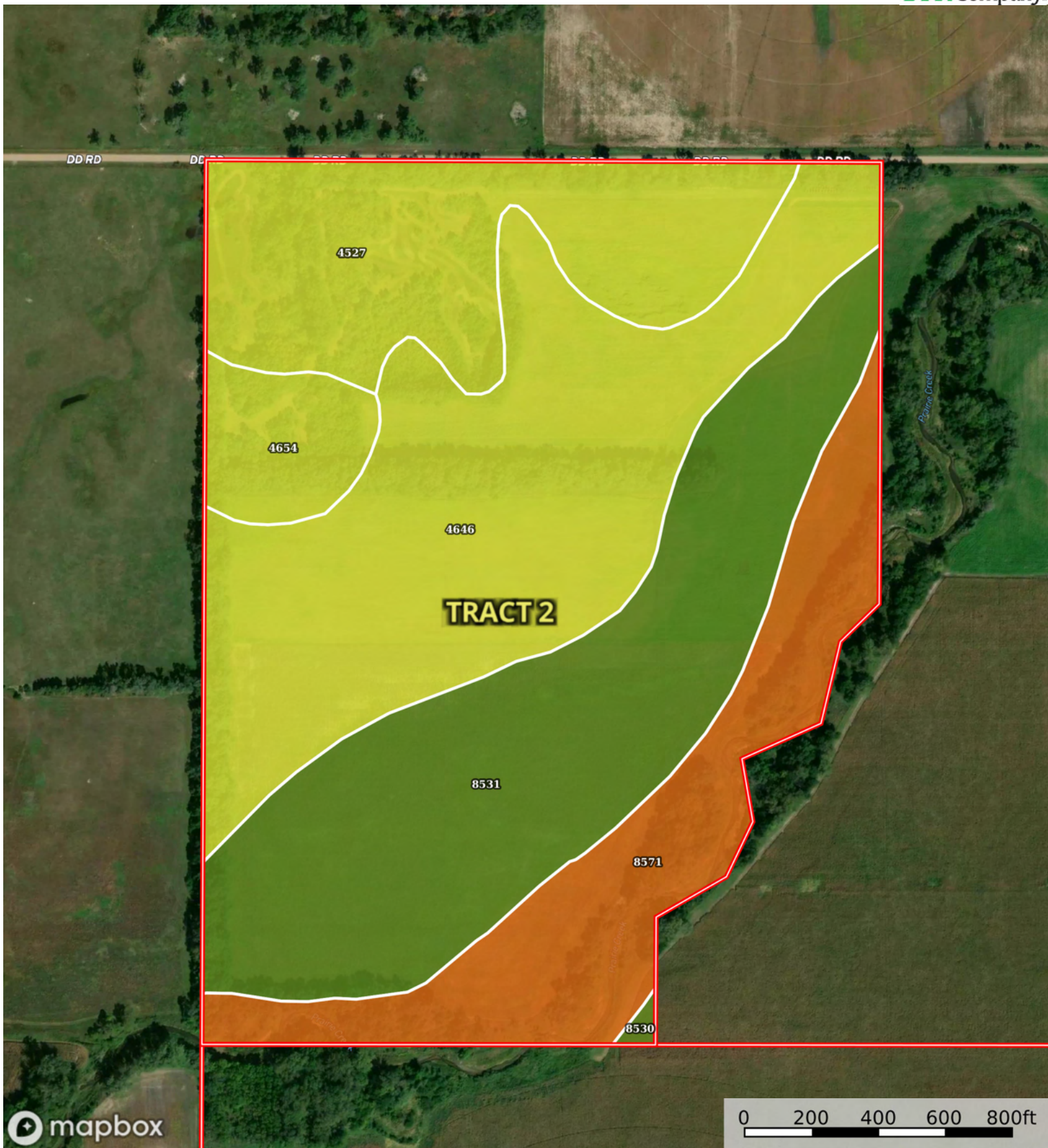


| Boundary 164.02 ac

SOIL CODE	SOIL DESCRIPTION	ACRES	%	CPI	NCCPI	CAP
8520	Merrick loam, rarely flooded	109.75	66.91	0	77	1
8530	Novina fine sandy loam, rarely flooded	29.77	18.15	0	59	2w
8403	Alda loam, occasionally flooded	13.15	8.02	0	37	3w
8571	Platte-Gothenburg complex, channeled, frequently flooded	6.02	3.67	0	13	7w
1022	Caruso-Gayville complex, 0 to 1 percent slopes	5.33	3.25	0	51	2w
TOTALS		164.02(*)	100%	-	67.33	1.59

(*) Total acres may differ in the second decimal compared to the sum of each acreage soil. This is due to a round error because we only show the acres of each soil with two decimal.





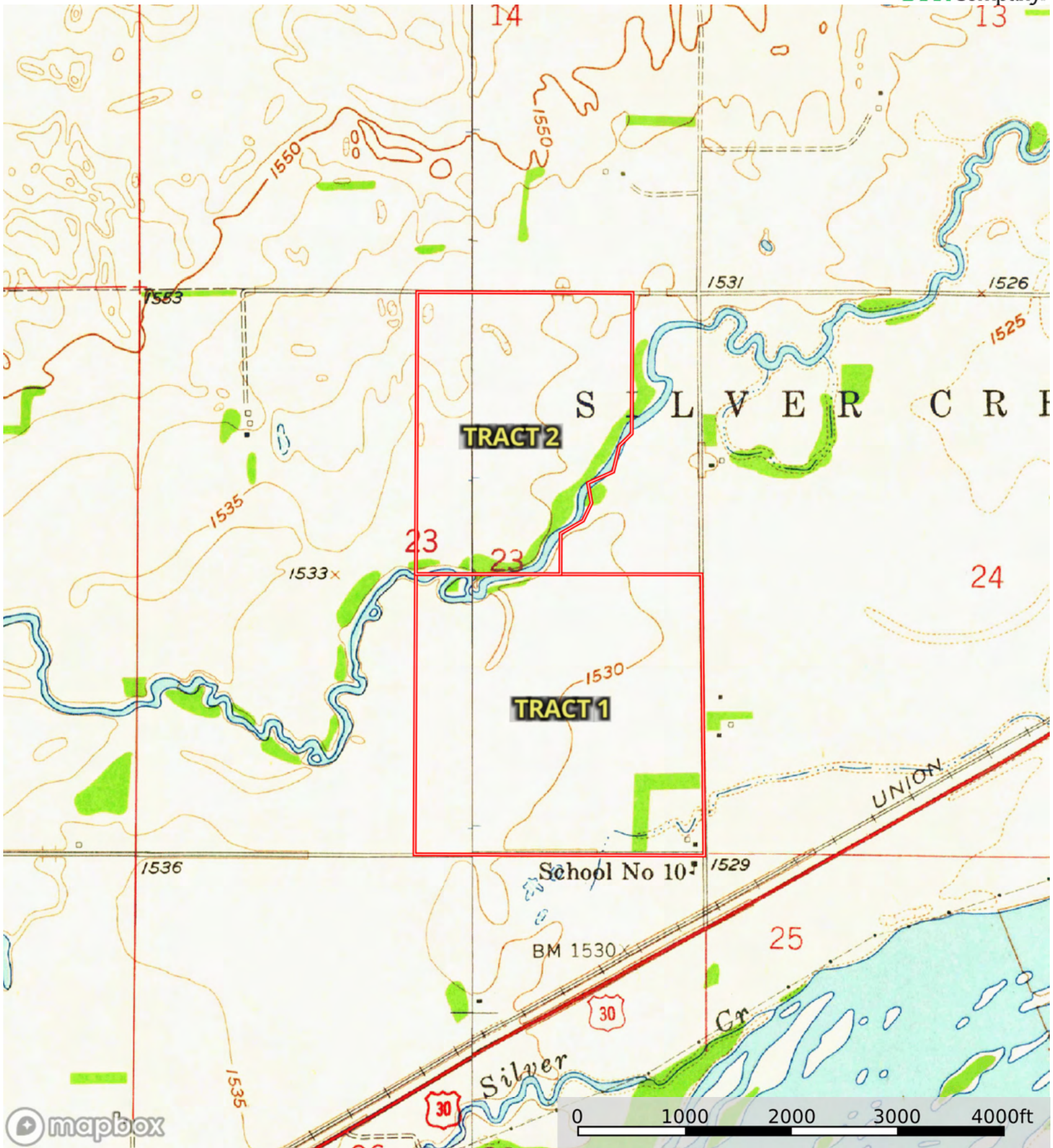
Boundary

| Boundary 110.71 ac

SOIL CODE	SOIL DESCRIPTION	ACRES	%	CPI	NCCPI	CAP
4646	lpage loamy fine sand, 0 to 3 percent slopes	35.2	31.79	0	33	4e
8531	Novina sandy loam, rarely flooded	32.5	29.36	0	59	2w
4527	Els loamy fine sand, 0 to 3 percent slopes	19.81	17.89	0	35	4w
8571	Platte-Gothenburg complex, channeled, frequently flooded	18.12	16.37	0	13	7w
4654	lpage-Els loamy fine sands, 0 to 3 percent slopes	4.83	4.36	0	33	4e
8530	Novina fine sandy loam, rarely flooded	0.25	0.23	0	59	2w
TOTALS		110.7 1(*)	100%	-	37.78	3.9

(*) Total acres may differ in the second decimal compared to the sum of each acreage soil. This is due to a round error because we only show the acres of each soil with two decimal.





Boundary