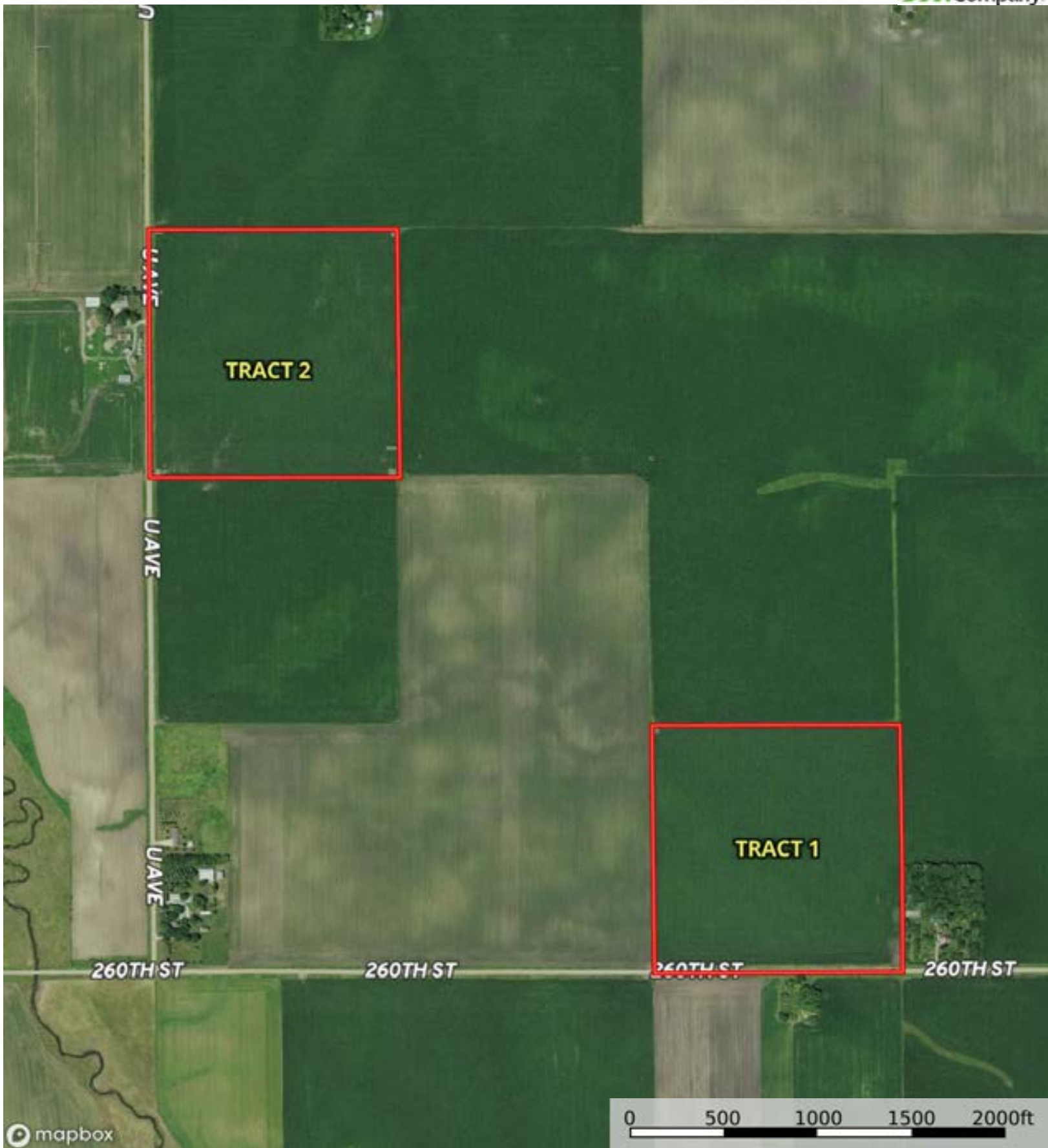


 Boundary



 Boundary



 Boundary



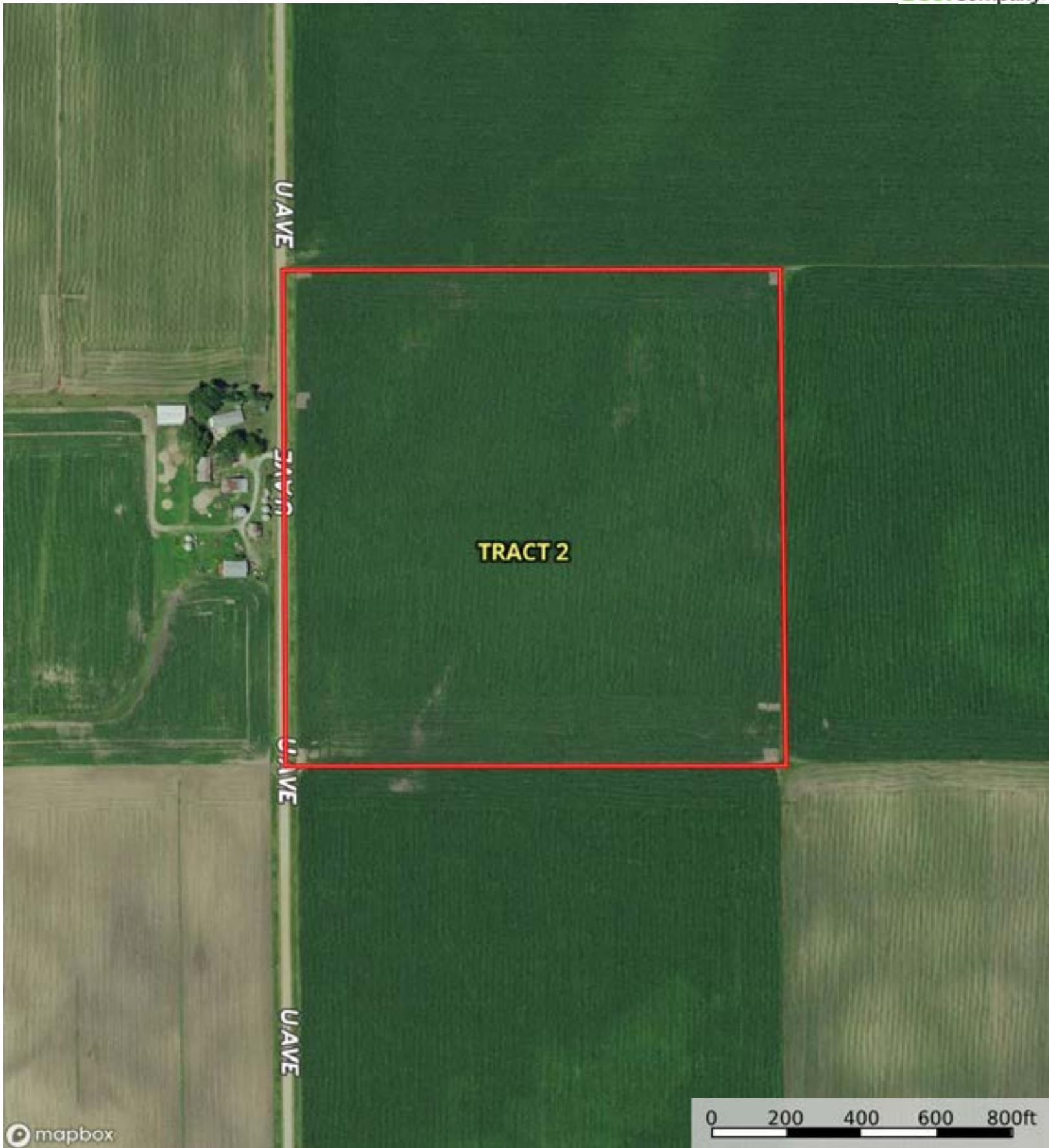
Boundary

|  Boundary 40.32 ac

SOIL CODE	SOIL DESCRIPTION	ACRES	%	CSR2	CPI	NCCPI	CAP
L138B	Clarion loam, Bemis moraine, 2 to 6 percent slopes	18.68	46.33	88.0	0	80	2e
L507	Canisteo clay loam, Bemis moraine, 0 to 2 percent slopes	16.43	40.75	87.0	0	81	2w
L55	Nicollet loam, 1 to 3 percent slopes	3.17	7.86	91.0	0	85	1
L107	Webster clay loam, Bemis moraine, 0 to 2 percent slopes	2.04	5.06	88.0	0	84	2w
TOTALS		40.32(*)	100%	87.83	-	81.0	1.92

(*) Total acres may differ in the second decimal compared to the sum of each acreage soil. This is due to a round error because we only show the acres of each soil with two decimal.






mapbox

Boundary



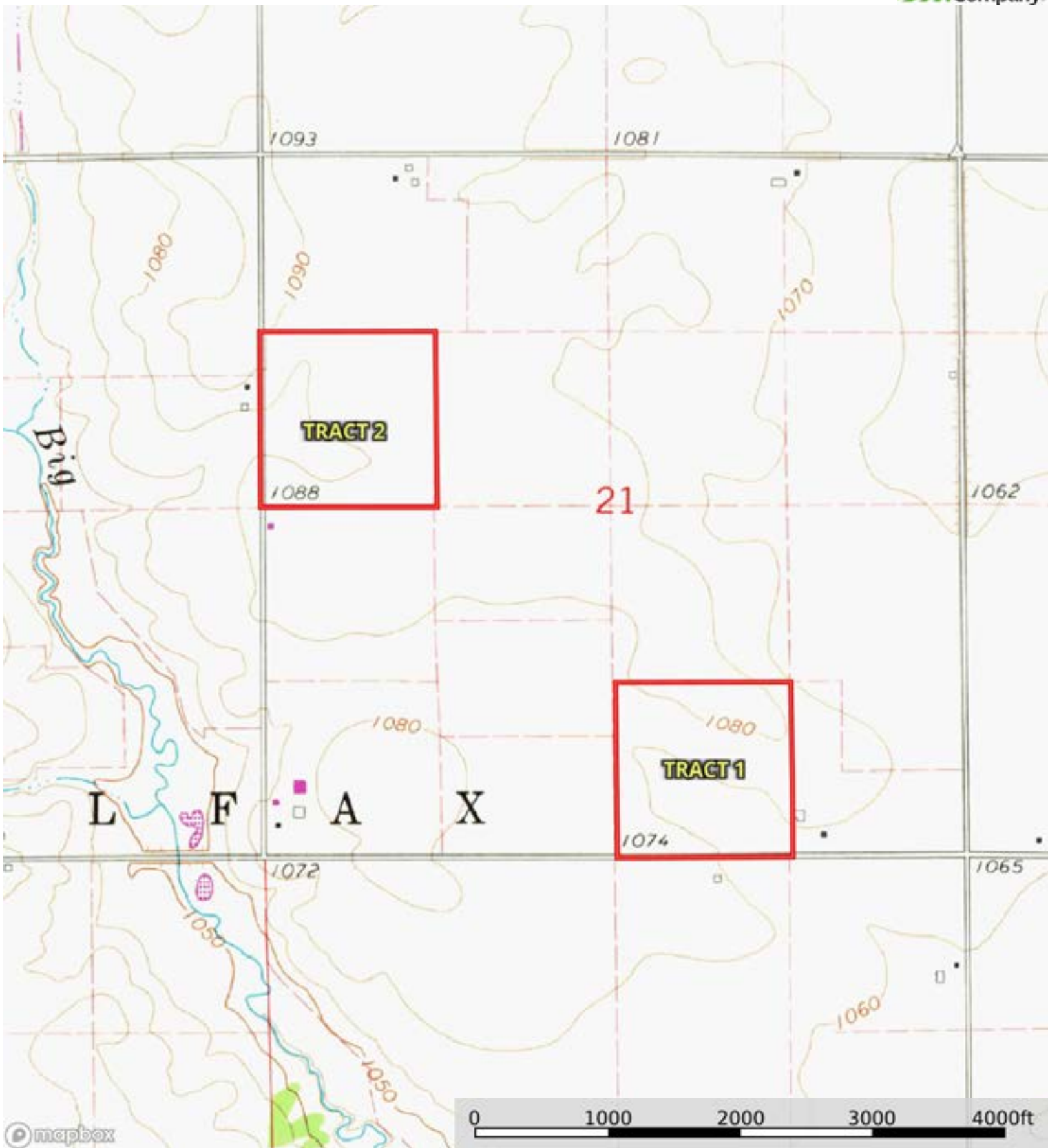
 Boundary

Boundary 40.54 ac

SOIL CODE	SOIL DESCRIPTION	ACRES	%	CSR2	CPI	NCCPI	CAP
L507	Canisteo clay loam, Bemis moraine, 0 to 2 percent slopes	11.2	27.63	87.0	0	81	2w
L138C	Clarion loam, Bemis moraine, 6 to 10 percent slopes	9.02	22.26	84.0	0	76	3e
L95	Harps clay loam, Bemis moraine, 0 to 2 percent slopes	6.64	16.38	75.0	0	81	2w
L138B	Clarion loam, Bemis moraine, 2 to 6 percent slopes	4.83	11.92	88.0	0	80	2e
L55	Nicollet loam, 1 to 3 percent slopes	4.18	10.31	91.0	0	85	1
L107	Webster clay loam, Bemis moraine, 0 to 2 percent slopes	2.36	5.82	88.0	0	84	2w
90	Okoboji mucky silt loam, 0 to 1 percent slopes	2.31	5.7	56.0	0	72	3w
TOTALS		40.54(*)	100%	83.21	-	79.86	2.18

(*) Total acres may differ in the second decimal compared to the sum of each acreage soil. This is due to a round error because we only show the acres of each soil with two decimal.





mapbox

Boundary