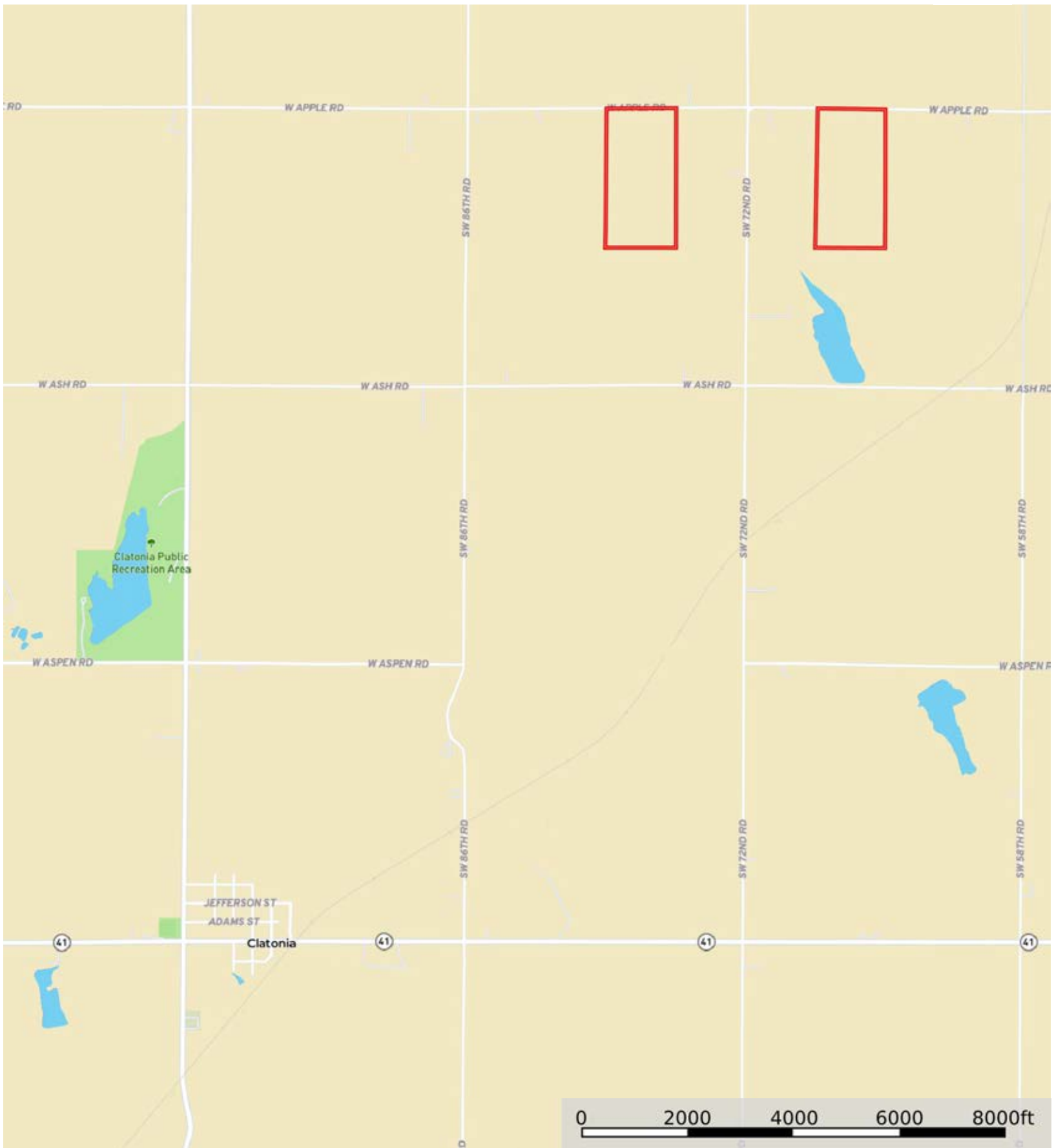



# A-16324

Gage County, Nebraska, 160 AC +/-




 Boundary



Boundary



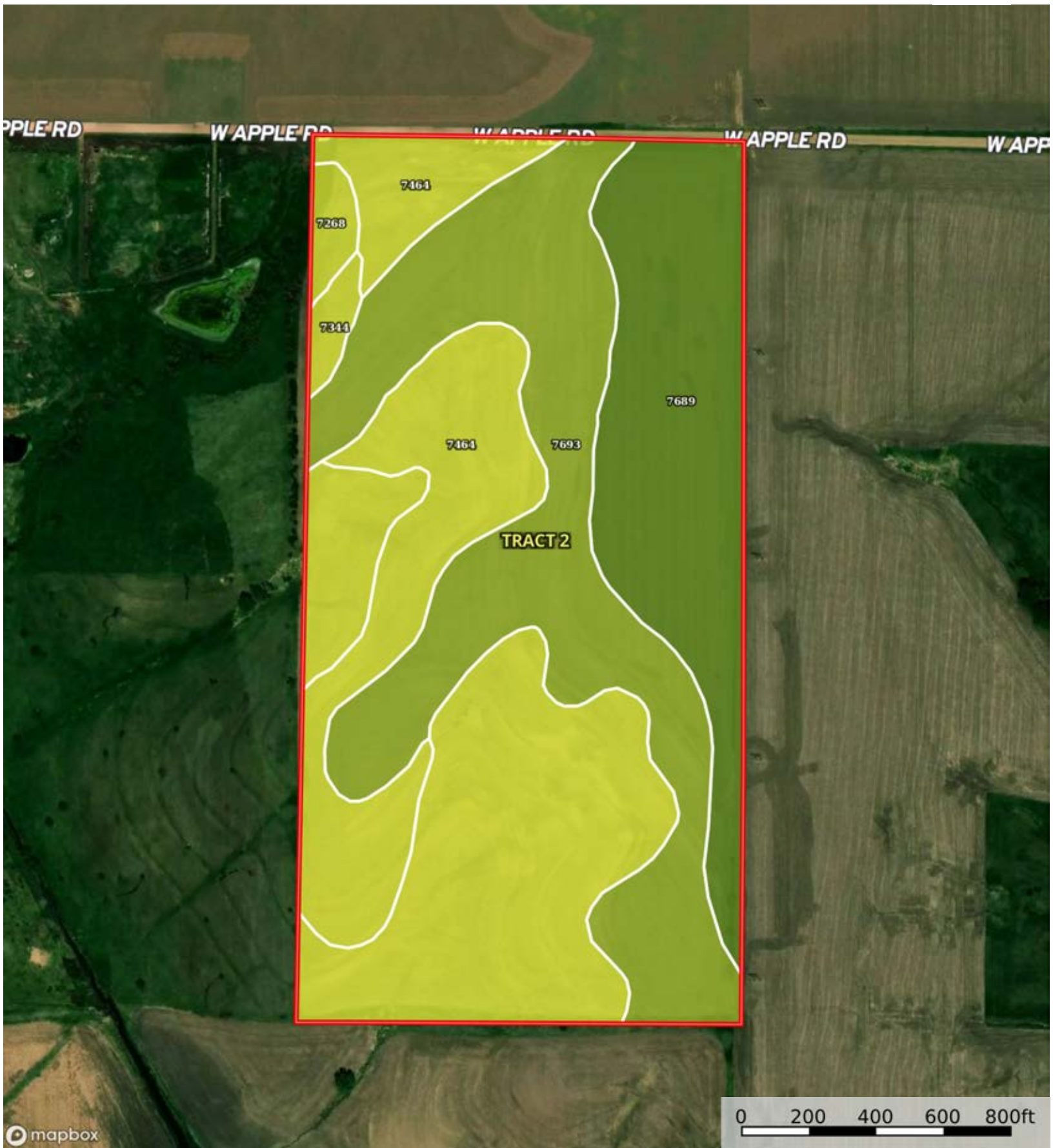
 Boundary

|  Boundary 80.52 ac

SOIL CODE	SOIL DESCRIPTION	ACRES	%	CPI	NCCPI	CAP
7689	Wymore silty clay loam, 0 to 2 percent slopes	42.76	53.1	0	63	2s
7693	Wymore silty clay loam, 2 to 6 percent slopes	26.26	32.61	0	62	3e
7464	Otoe silty clay loam, 6 to 11 percent slopes, eroded	8.39	10.42	0	53	4e
7344	Malmo, eroded-Pawnee complex, 6 to 11 percent slopes	3.07	3.81	0	45	4e
3642	Kezan silt loam, occasionally flooded	0.04	0.05	0	69	5w
TOTALS		80.52(*)	100%	-	60.94	2.61

(\*) Total acres may differ in the second decimal compared to the sum of each acreage soil. This is due to a round error because we only show the acres of each soil with two decimal.





Boundary

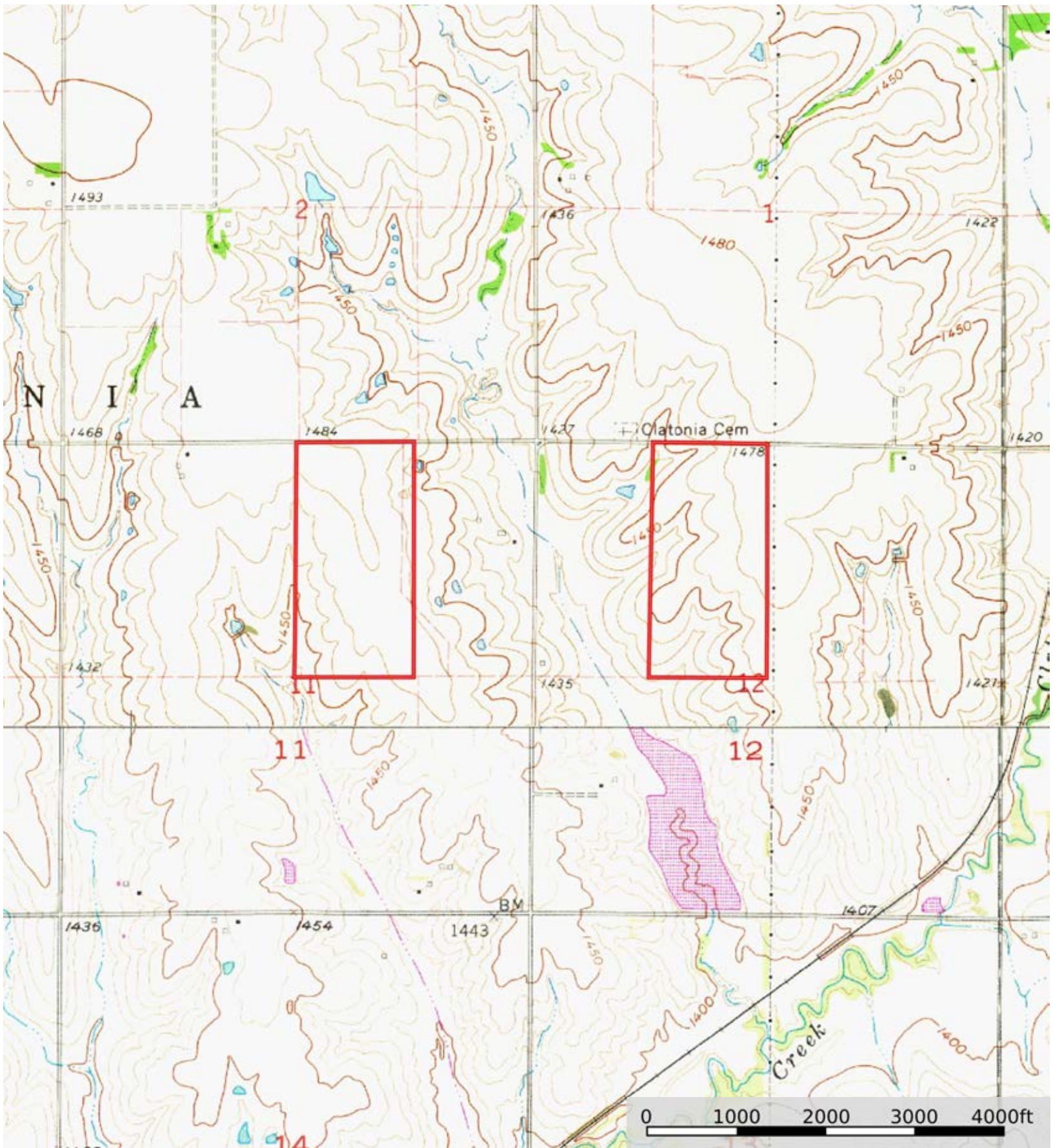
|  Boundary 78.97 ac


SOIL CODE	SOIL DESCRIPTION	ACRES	%	CPI	NCCPI	CAP
7693	Wymore silty clay loam, 2 to 6 percent slopes	24.86	31.48	0	62	3e
7344	Malmo, eroded-Pawnee complex, 6 to 11 percent slopes	21.67	27.44	0	45	4e
7689	Wymore silty clay loam, 0 to 2 percent slopes	16.37	20.73	0	63	2s
7464	Otoe silty clay loam, 6 to 11 percent slopes, eroded	15.04	19.05	0	53	4e
7268	Burchard-Steinauer clay loams, 6 to 11 percent slopes, eroded	1.03	1.3	0	55	4e
TOTALS		78.97(*)	100%	-	55.74	3.27

(\*) Total acres may differ in the second decimal compared to the sum of each acreage soil. This is due to a round error because we only show the acres of each soil with two decimal.



A-16324  
Gage County, Nebraska, 160 AC +/-



 Boundary