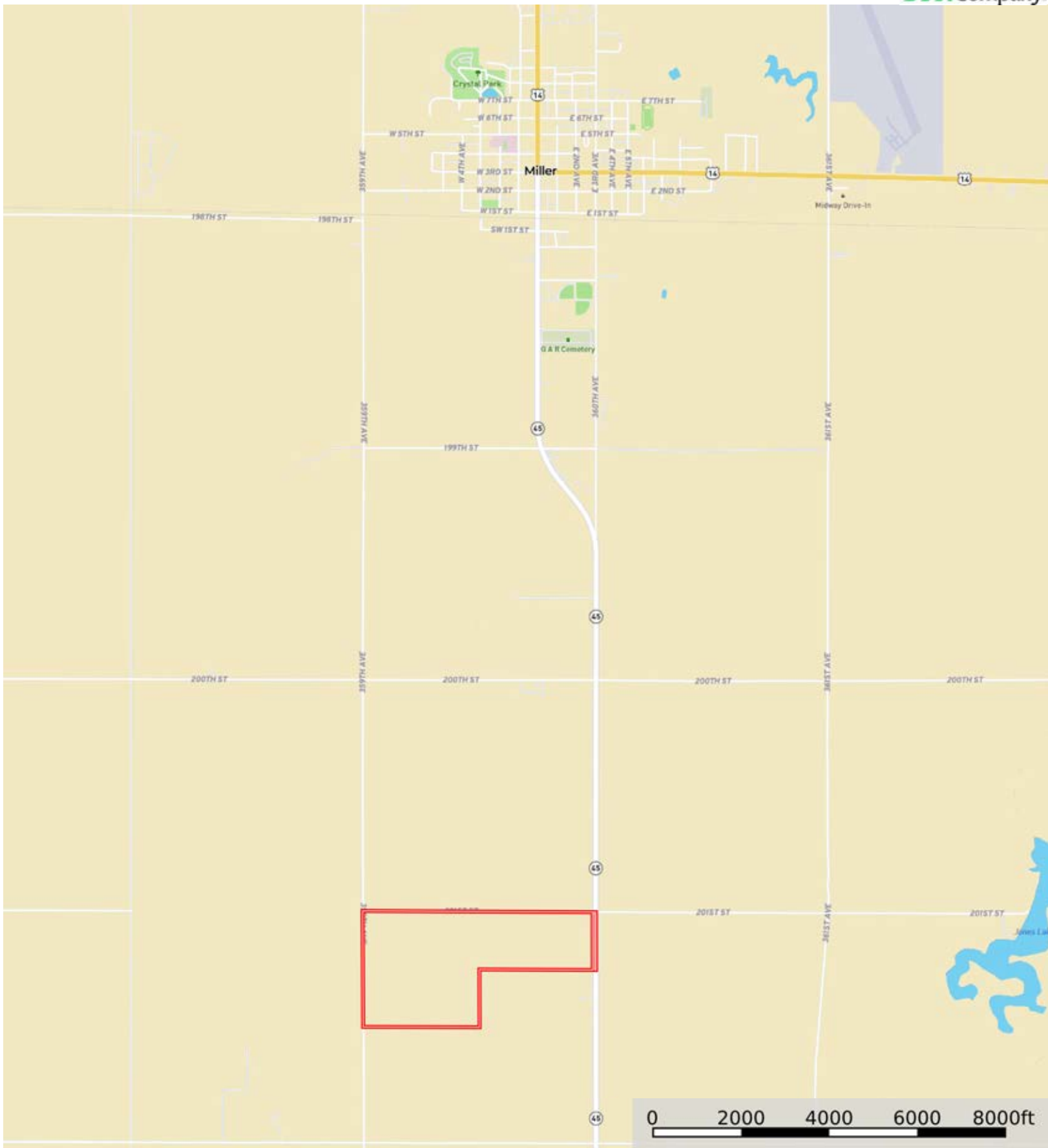


A-16696-01

Hand County, South Dakota, 238.76 AC +/-



Boundary


Cris Miller
11516 Nicholas St

The information contained herein was obtained from sources deemed to be reliable. Land id™ Services makes no warranties or guarantees as to the completeness or accuracy thereof.


A-16696-01

Hand County, South Dakota, 238.76 AC +/-



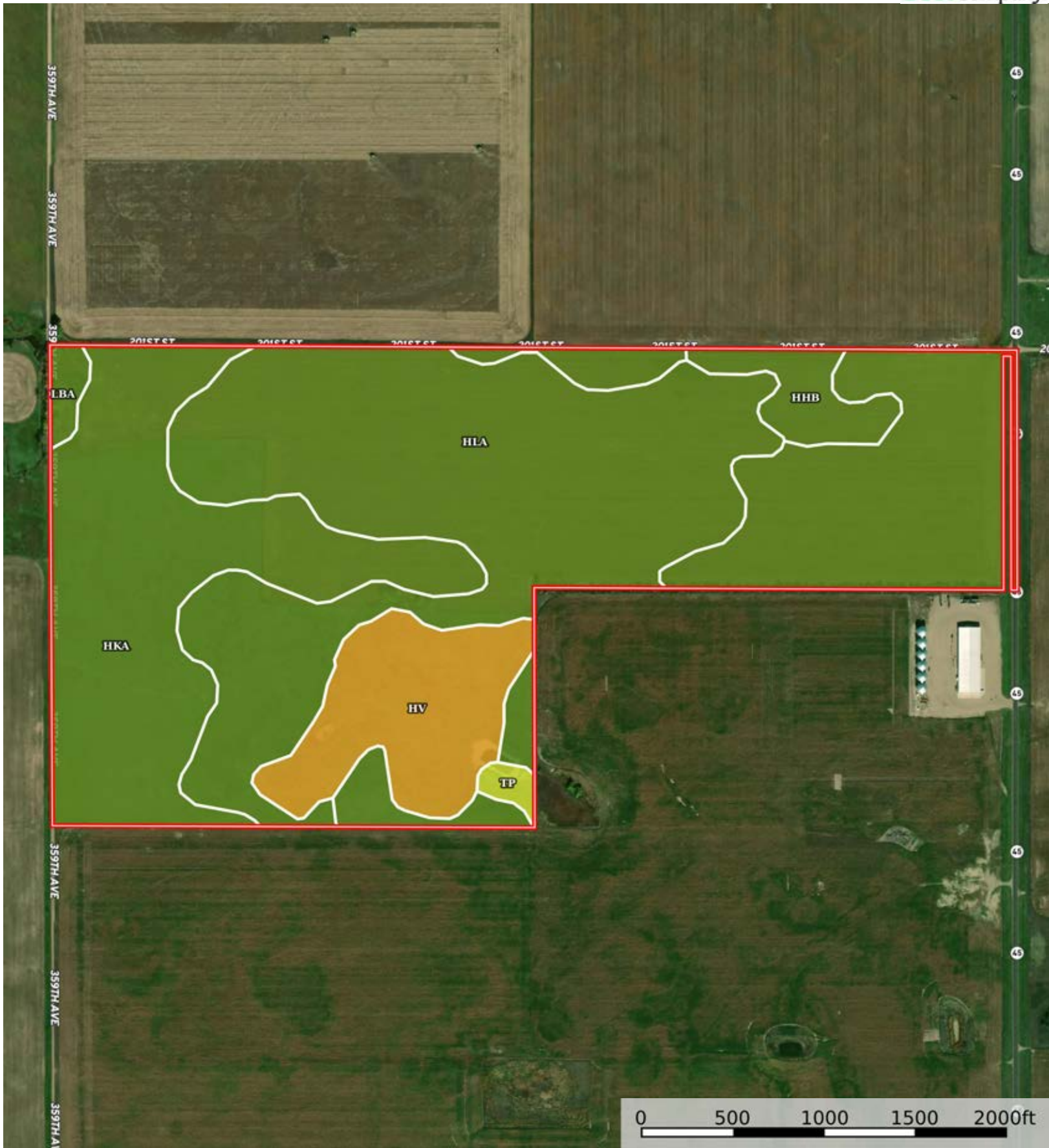
 Boundary


Cris Miller
11516 Nicholas St

 The information contained herein was obtained from sources deemed to be reliable. Land id™ Services makes no warranties or guarantees as to the completeness or accuracy thereof.

A-16696-01

Hand County, South Dakota, 238.76 AC +/-



 Boundary

Cris Miller
11516 Nicholas St



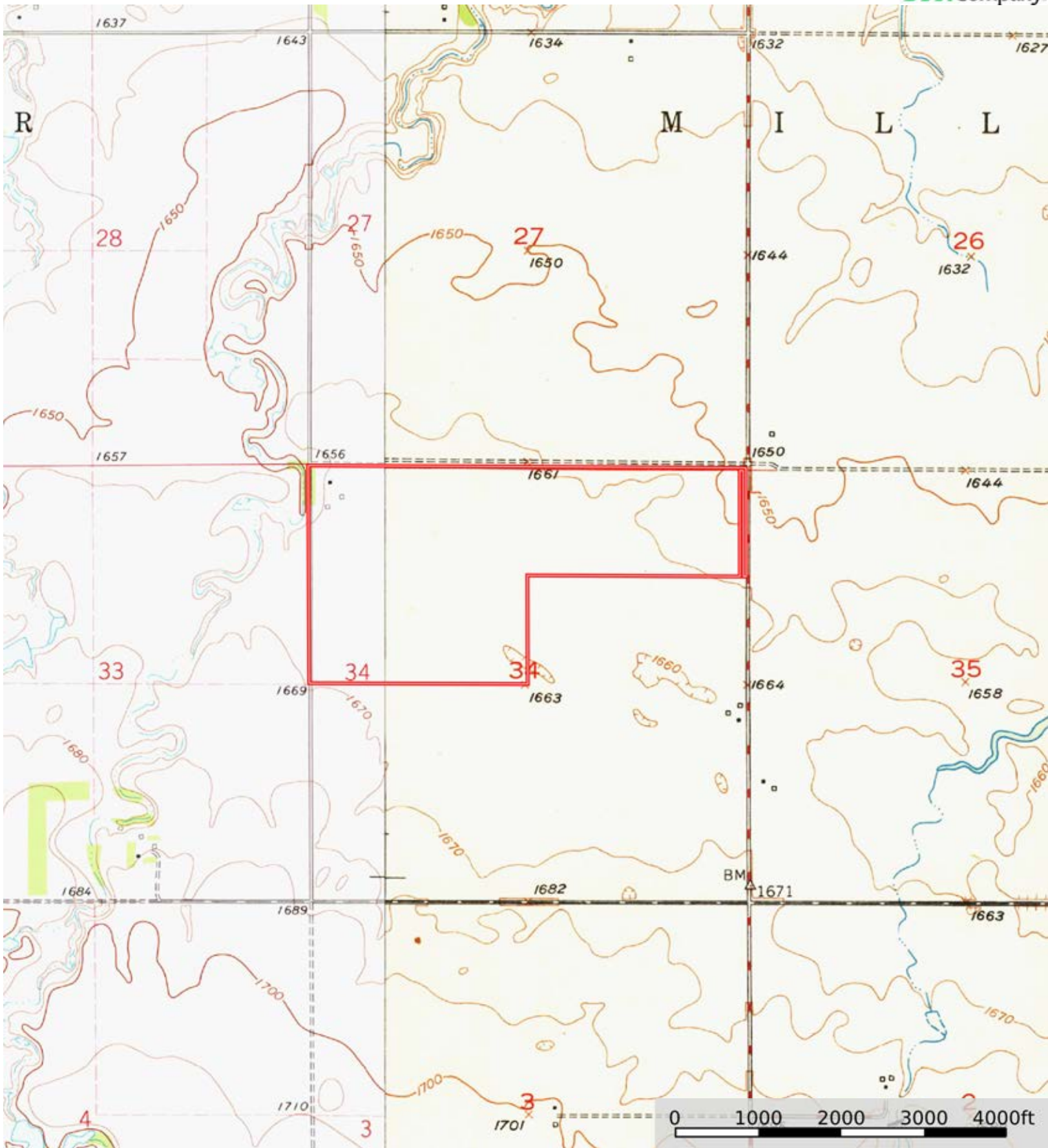
The information contained herein was obtained from sources deemed to be reliable. Land id™ Services makes no warranties or guarantees as to the completeness or accuracy thereof.


|  Boundary 239.74 ac

SOIL CODE	SOIL DESCRIPTION	ACRES	%	CPI	NCCPI	CAP
HkA	Houdek-Prosper loams, 0 to 2 percent slopes	105.26	43.91	88	67	2c
HIA	Houdek-Dudley complex, 0 to 2 percent slopes	99.24	41.4	61	52	2c
Hv	Hoven silt loam, 0 to 1 percent slopes	24.09	10.05	15	4	6s
HhB	Houdek loam, 2 to 6 percent slopes	7.49	3.12	81	64	2e
LbA	Bon loam, 0 to 2 percent slopes, rarely flooded	2.17	0.91	85	75	2c
Tp	Tetonka silt loam, 0 to 1 percent slopes	1.49	0.62	57	17	4w
TOTALS		239.74(*)	100%	69.05	54.13	2.41

(*) Total acres may differ in the second decimal compared to the sum of each acreage soil. This is due to a round error because we only show the acres of each soil with two decimal.





 Boundary