
 Boundary





 Boundary



mapbox

Boundary

|  Boundary 156.5 ac

SOIL CODE	SOIL DESCRIPTION	ACRES	%	CPI	NCCPI	CAP
1652	Kuma silt loam, 0 to 1 percent slopes	129.15	82.52	0	61	2c
1619	Keith silt loam, 0 to 1 percent slopes	20.74	13.25	0	61	2c
1741	Pleasant silty clay loam, ponded	6.61	4.22	0	7	4w
TOTALS		156.5(*)	100%	-	58.72	2.08

(*) Total acres may differ in the second decimal compared to the sum of each acreage soil. This is due to a round error because we only show the acres of each soil with two decimal.



A-16786

Cheyenne County, Rawlins County, Kansas, 1096.38 AC +/-




mapbox

Boundary



The information contained herein was obtained from sources deemed to be reliable. MapRight Services makes no warranties or guarantees as to the completeness or accuracy thereof.



 Boundary

|  Boundary 156.43 ac

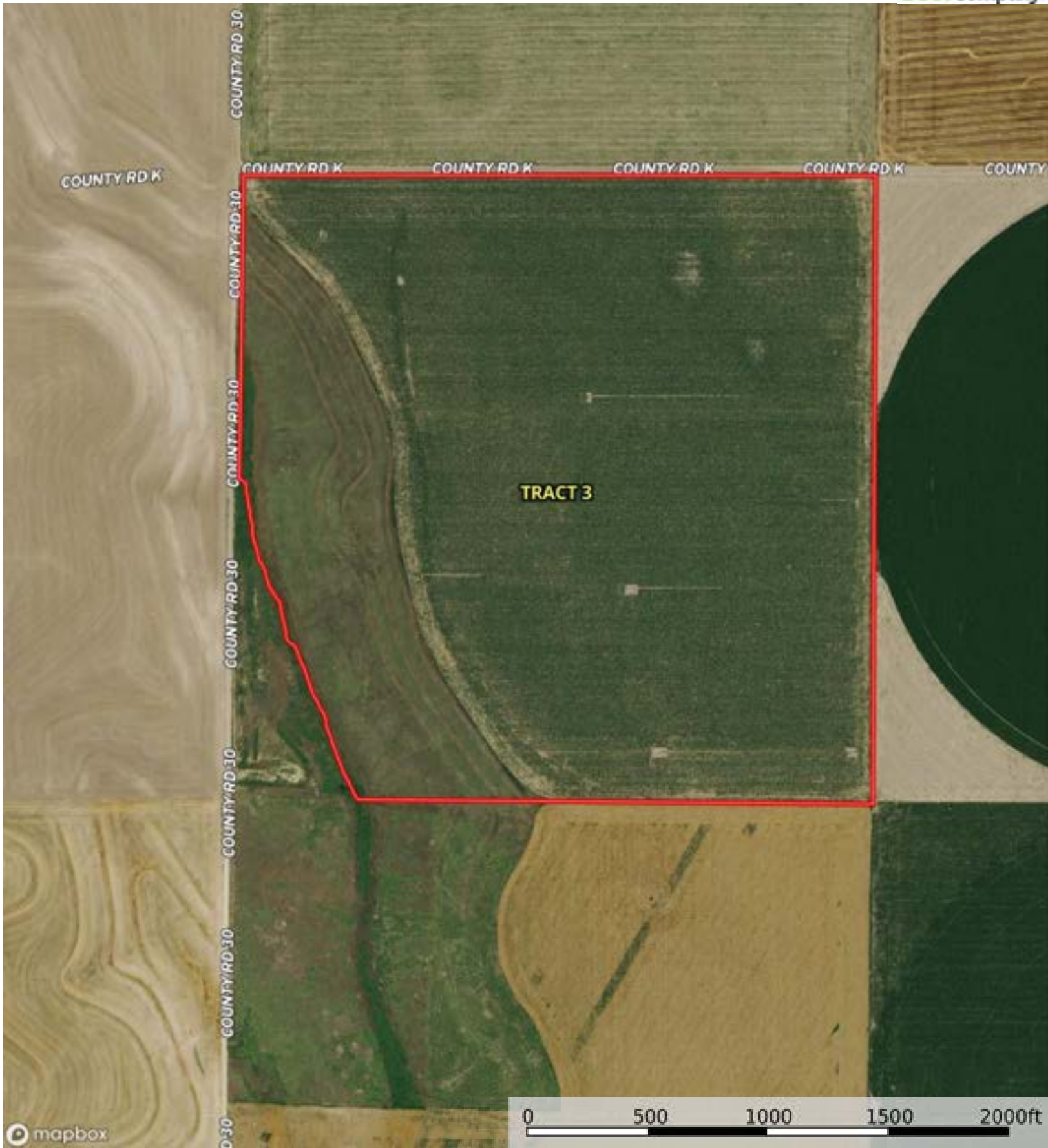
SOIL CODE	SOIL DESCRIPTION	ACRES	%	CPI	NCCPI	CAP
1652	Kuma silt loam, 0 to 1 percent slopes	156.43	100.0	0	61	2c
TOTALS		156.43(*)	100%	-	61.0	2.0

(*) Total acres may differ in the second decimal compared to the sum of each acreage soil. This is due to a round error because we only show the acres of each soil with two decimal.



A-16786

Cheyenne County, Rawlins County, Kansas, 1096.38 AC +/-



Boundary

A-16786

Cheyenne County, Rawlins County, Kansas, 1096.38 AC +/-



Boundary


|  Boundary 150.96 ac

SOIL CODE	SOIL DESCRIPTION	ACRES	%	CPI	NCCPI	CAP
1652	Kuma silt loam, 0 to 1 percent slopes	95.39	63.19	0	61	2c
1580	Colby silt loam, 6 to 15 percent slopes	25.39	16.82	0	48	6e
1857	Ulysses silt loam, 1 to 3 percent slopes	15.68	10.39	0	65	3e
1579	Colby silt loam, 3 to 6 percent slopes	14.5	9.61	0	54	4e
TOTALS		150.96(*)	100%	-	58.56	2.97


(*) Total acres may differ in the second decimal compared to the sum of each acreage soil. This is due to a round error because we only show the acres of each soil with two decimal.





 Boundary



 Boundary

Boundary 316.21 ac

SOIL CODE	SOIL DESCRIPTION	ACRES	%	CPI	NCCPI	CAP
1960	Buffalo Park silt loam, 3 to 6 percent slopes	224.77	71.08	0	55	4e
1619	Keith silt loam, 0 to 1 percent slopes	85.51	27.04	0	61	2c
1741	Pleasant silty clay loam, ponded	5.9	1.87	0	7	4w
1579	Colby silt loam, 3 to 6 percent slopes	0.03	0.01	0	54	4e
TOTALS		316.21(*)	100%	-	55.73	3.46

(*) Total acres may differ in the second decimal compared to the sum of each acreage soil. This is due to a round error because we only show the acres of each soil with two decimal.



A-16786

Cheyenne County, Rawlins County, Kansas, 1096.38 AC +/-



Boundary



The information contained herein was obtained from sources deemed to be reliable. MapRight Services makes no warranties or guarantees as to the completeness or accuracy thereof.



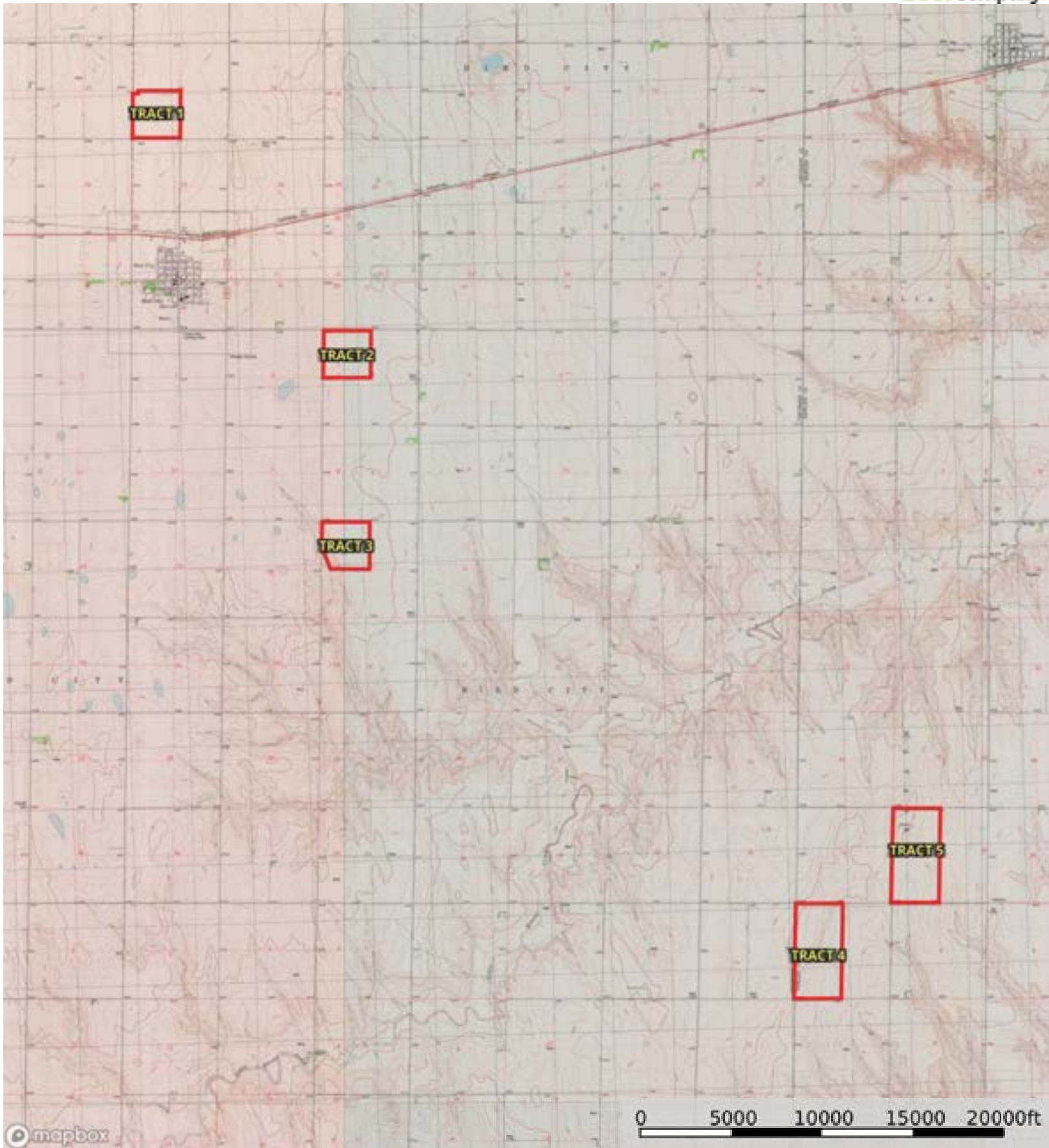
 Boundary


|  Boundary 315.73 ac

SOIL CODE	SOIL DESCRIPTION	ACRES	%	CPI	NCCPI	CAP
1960	Buffalo Park silt loam, 3 to 6 percent slopes	227.65	72.11	0	55	4e
1619	Keith silt loam, 0 to 1 percent slopes	88.08	27.9	0	61	2c
TOTALS		315.73(*)	100%	-	56.68	3.44

(*) Total acres may differ in the second decimal compared to the sum of each acreage soil. This is due to a round error because we only show the acres of each soil with two decimal.





 Boundary