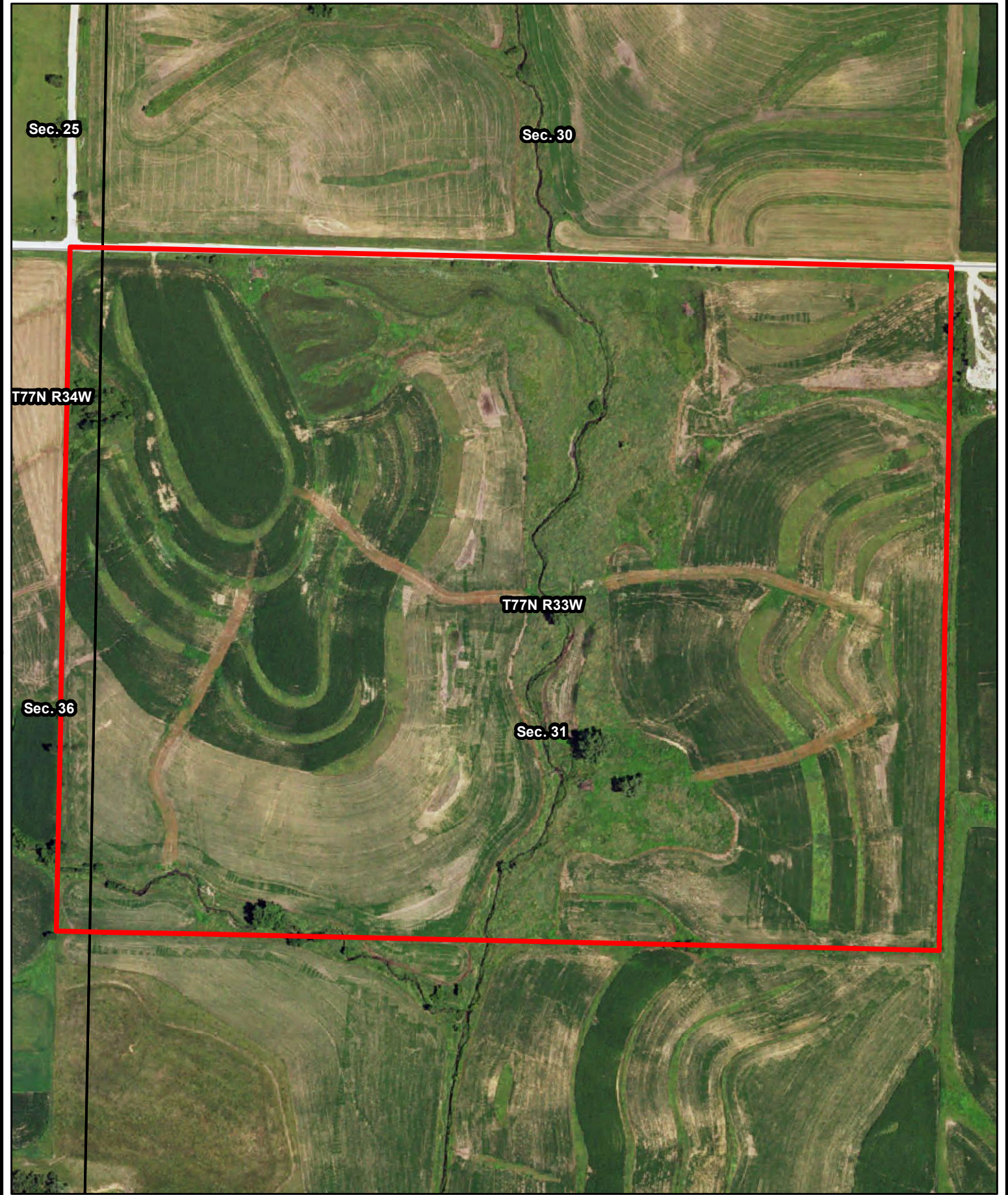


**A-16969**  
**Roscoe Jr and Ronald Porch**  
**Adair County, Iowa**

Latitude: 41.4578°N  
 Longitude: -94.7061°W  
 Imagery Source: USDA NAIP  
 Soil Data Source: USDA NRCS  
 Boundaries Are Approximate



Sec. 25

Sec. 30

T77N R34W

T77N R33W

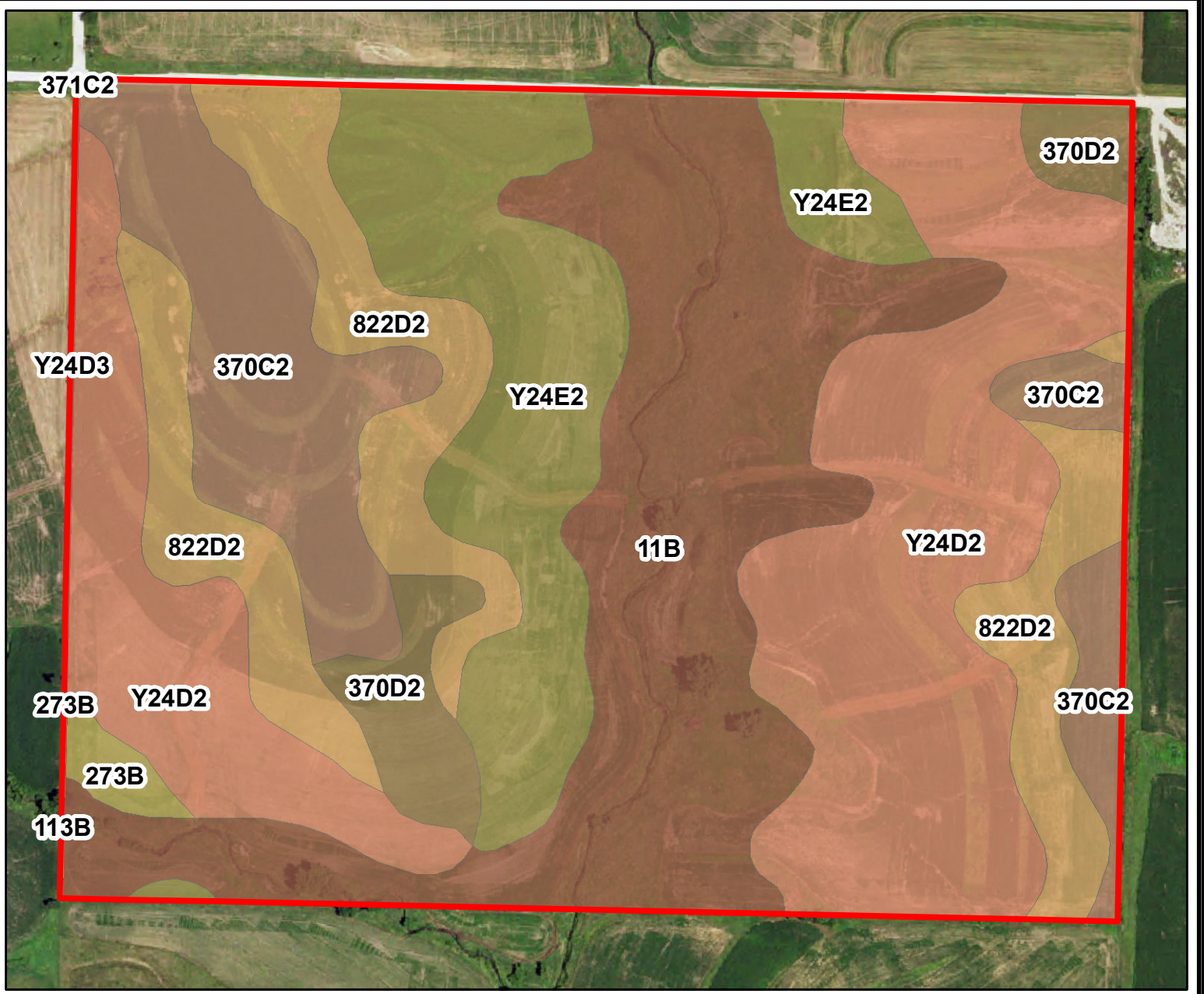
Sec. 36

Sec. 31



**A-16969**  
**Roscoe Jr and Ronald Porch**  
**Adair County, Iowa**

Latitude: 41.4293°N  
Longitude: -94.6961°W  
Imagery Source: USDA NAIP  
Soil Data Source: USDA NRCS  
Boundaries Are Approximate

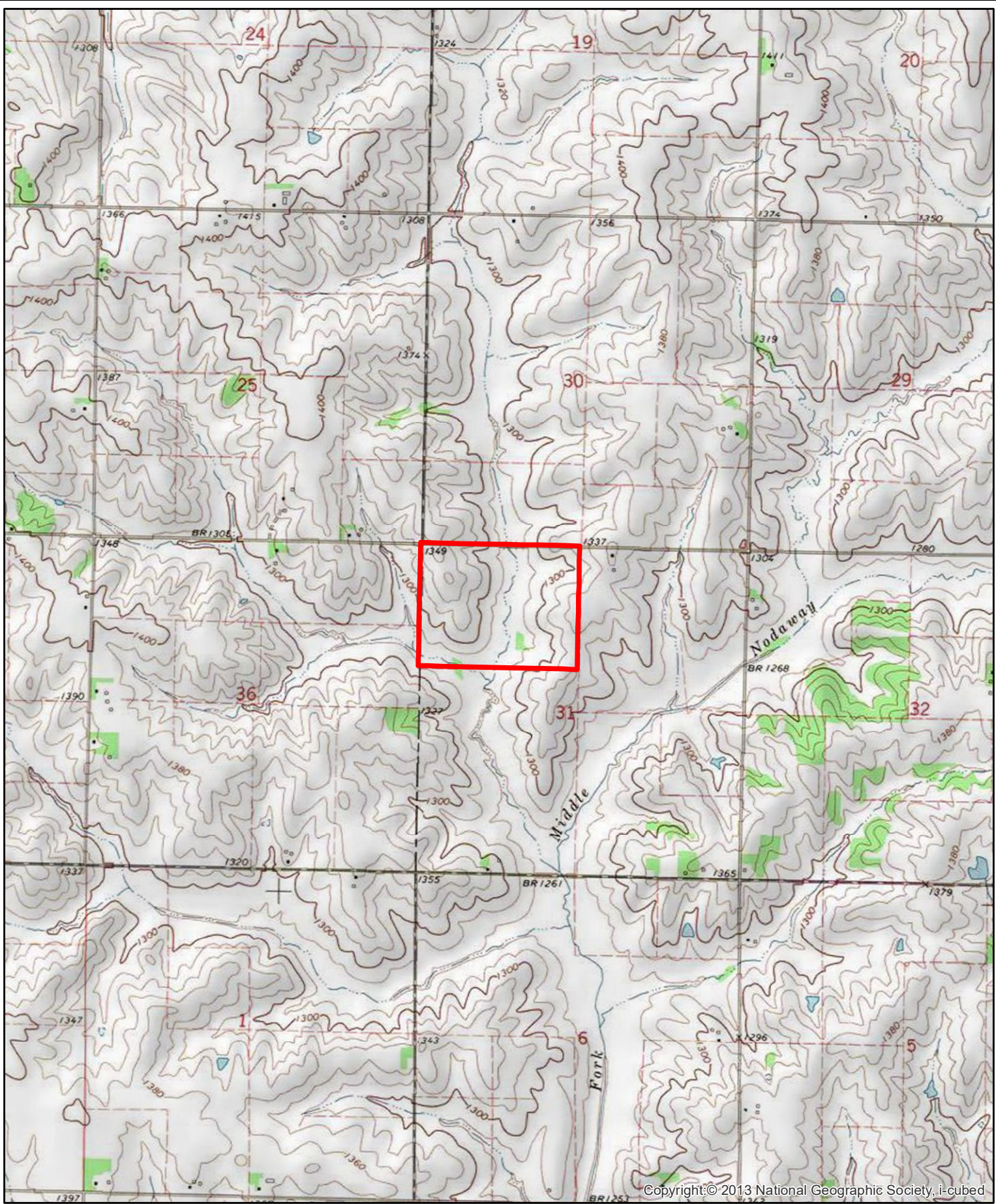


MAP SYMBOL	NAME	NON IRR			
		LCC	CSR1	CSR2	ACRES
Y24D2	Shelby clay loam, dissected till plain, 9 to 14 percent slopes, eroded	IIIe	0	49	33.5
11B	Colo, occasionally flooded-Ely silty clay loams, dissected till plain, 2 to 5 percent slopes	IIw	69	80	28.6
Y24E2	Shelby clay loam, dissected till plain, 14 to 18 percent slopes, eroded	IVe	0	35	16.9
822D2	Lamoni silty clay loam, 9 to 14 percent slopes, moderately eroded	IVe	15	14	16.4
370C2	Sharpsburg silty clay loam, 5 to 9 percent slopes, eroded	IIIe	67	80	13.9
370D2	Sharpsburg silty clay loam, 9 to 14 percent slopes, eroded	IIIe	57	54	4.2
273B	Olmitz loam, 2 to 5 percent slopes	Ile	72	89	1.0
Y24D3	Shelby clay loam, dissected till plain, 9 to 14 percent slopes, severely eroded	IVe	39	43	0.3
113B	Colo, overwash-Ely complex, 2 to 5 percent slopes	IIw	59	69	0.1
273B	Olmitz loam, 2 to 5 percent slopes	Ile	79	89	0.1
371C2	Sharpsburg-Nira complex, 5 to 9 percent slopes, moderately eroded	IIIe	69	79	0.0
<b>TOTAL</b>			<b>30.3</b>	<b>53.9</b>	<b>114.8</b>



**A-16969**  
**Roscoe Jr and Ronald Porch**  
**Adair County, Iowa**

Latitude: 41.4293°N  
 Longitude: -94.6961°W  
 Imagery Source: USDA NAIP  
 Soil Data Source: USDA NRCS  
 Boundaries Are Approximate



**A-16969**  
**Roscoe Jr and Ronald Porch**  
**Adair County, Iowa**

Latitude: 41.4293°N  
Longitude: -94.6961°W  
Imagery Source: USDA NAIP  
Soil Data Source: USDA NRCS  
Boundaries Are Approximate