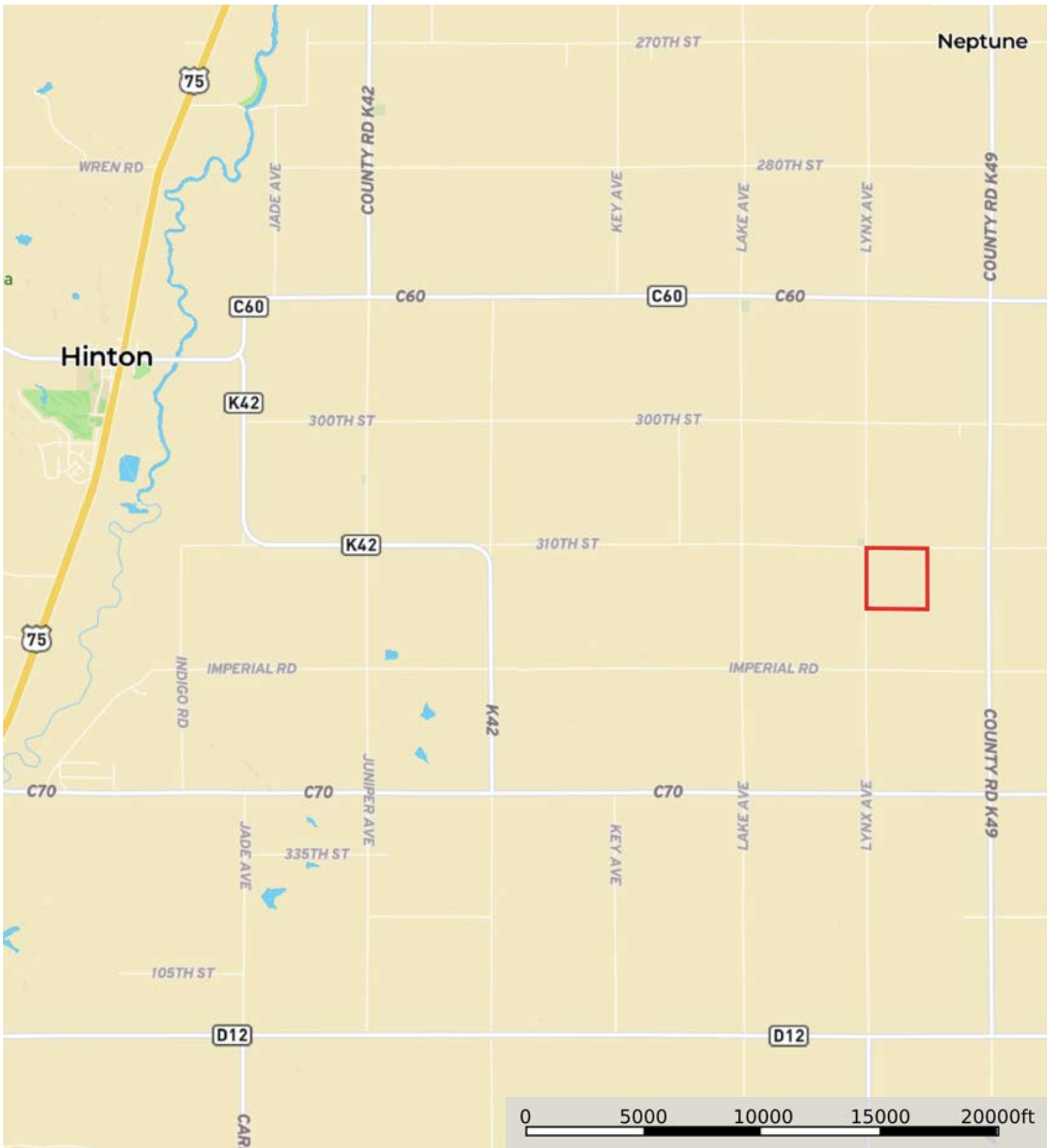
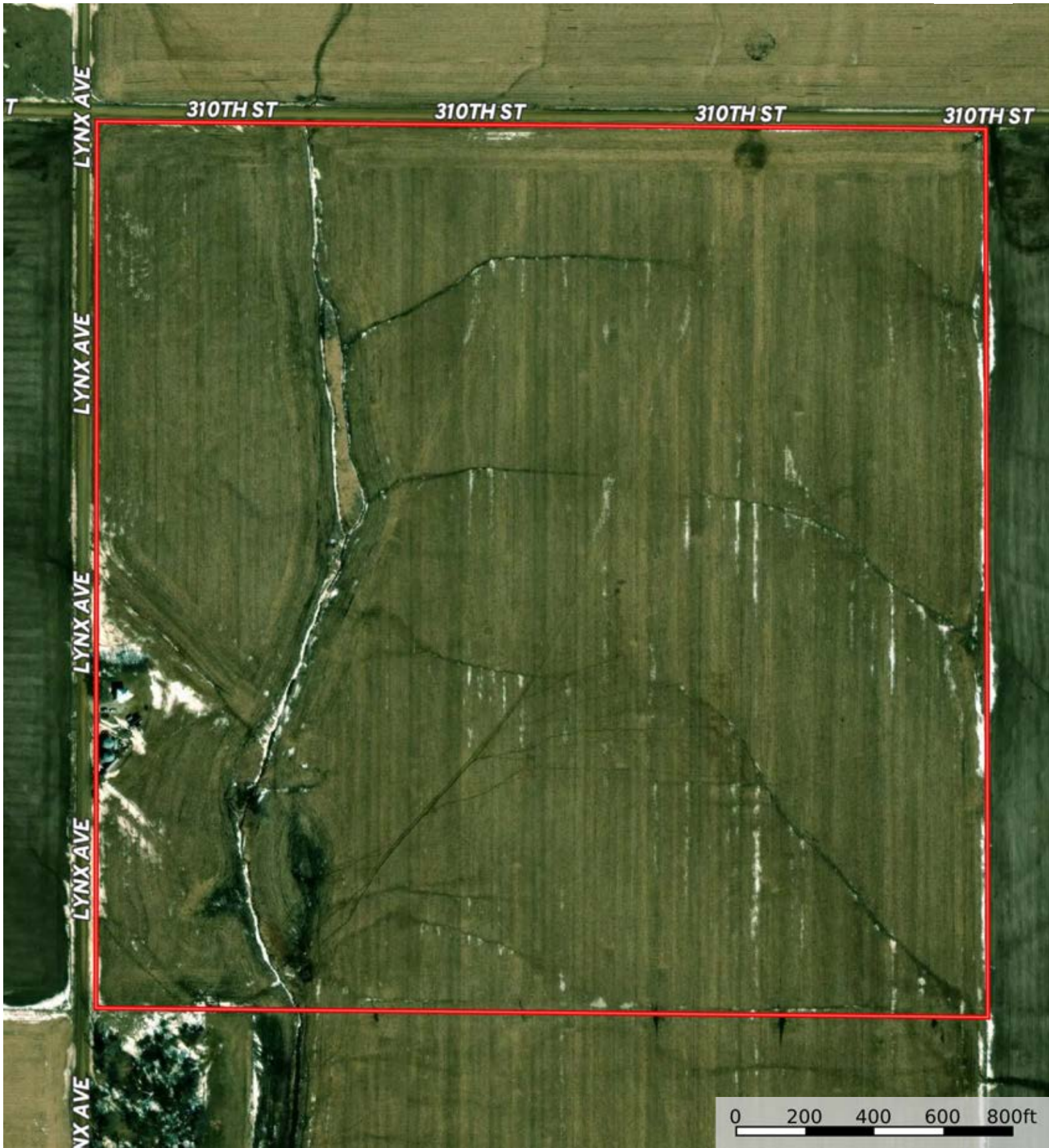


A-17053
Plymouth County, Iowa, 160 AC +/-



 Boundary



 Boundary



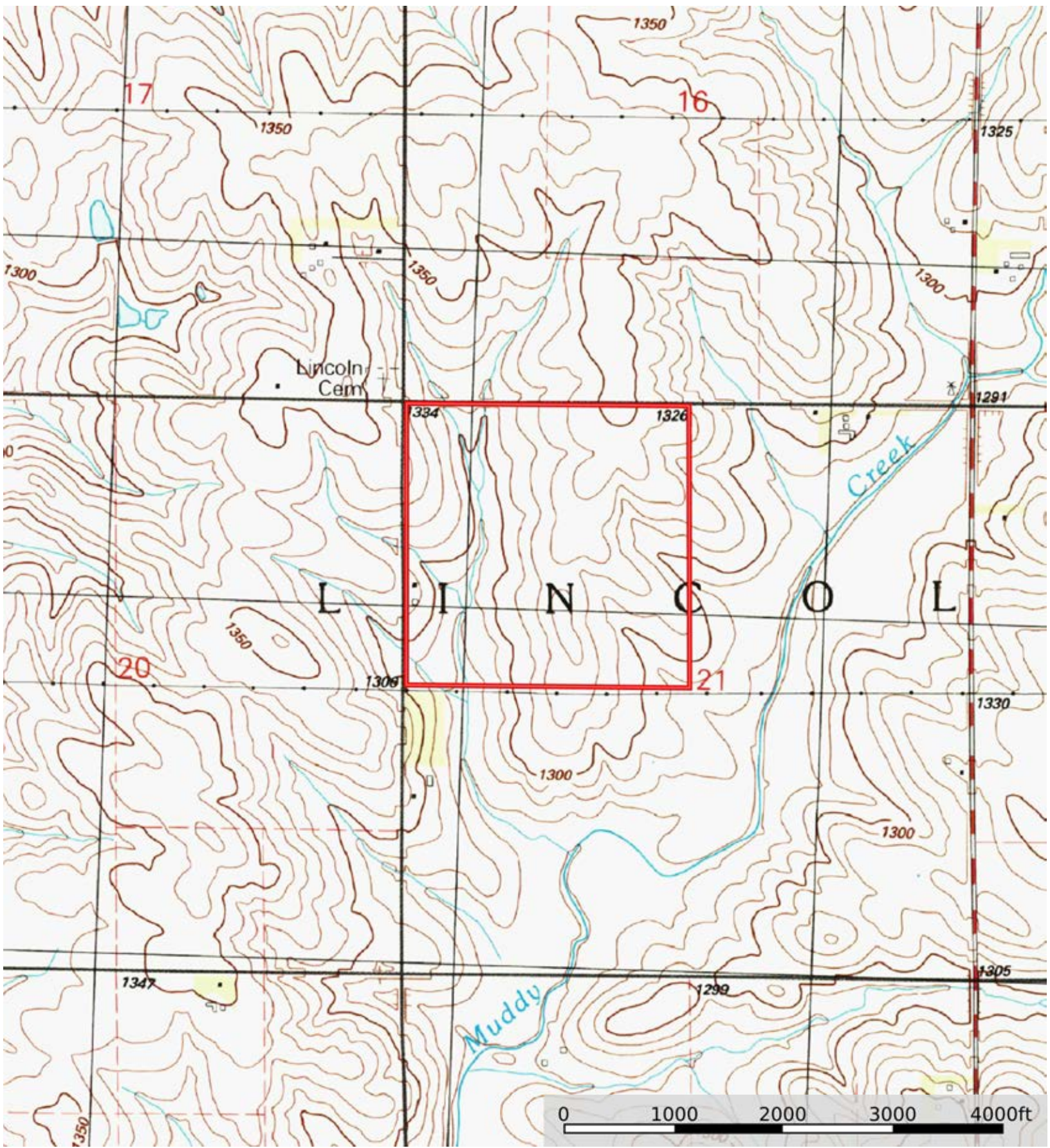
 Boundary

|  Boundary 153.58 ac

SOIL CODE	SOIL DESCRIPTION	ACRES	%	CSR2	CPI	NCCPI	CAP
310C2	Galva silty clay loam, 5 to 9 percent slopes, eroded	76.14	49.58	84.0	0	68	3e
310B	Galva silty clay loam, 2 to 5 percent slopes	46.77	30.46	95.0	0	75	2e
467B	Radford silty clay loam, 2 to 5 percent slopes	28.99	18.88	75.0	0	77	2w
1C3	Ida silt loam, 5 to 9 percent slopes, severely eroded	1.68	1.09	58.0	0	60	3e
TOTALS		153.58(*)	100%	85.37	-	71.75	2.51

(*) Total acres may differ in the second decimal compared to the sum of each acreage soil. This is due to a round error because we only show the acres of each soil with two decimal.





 Boundary