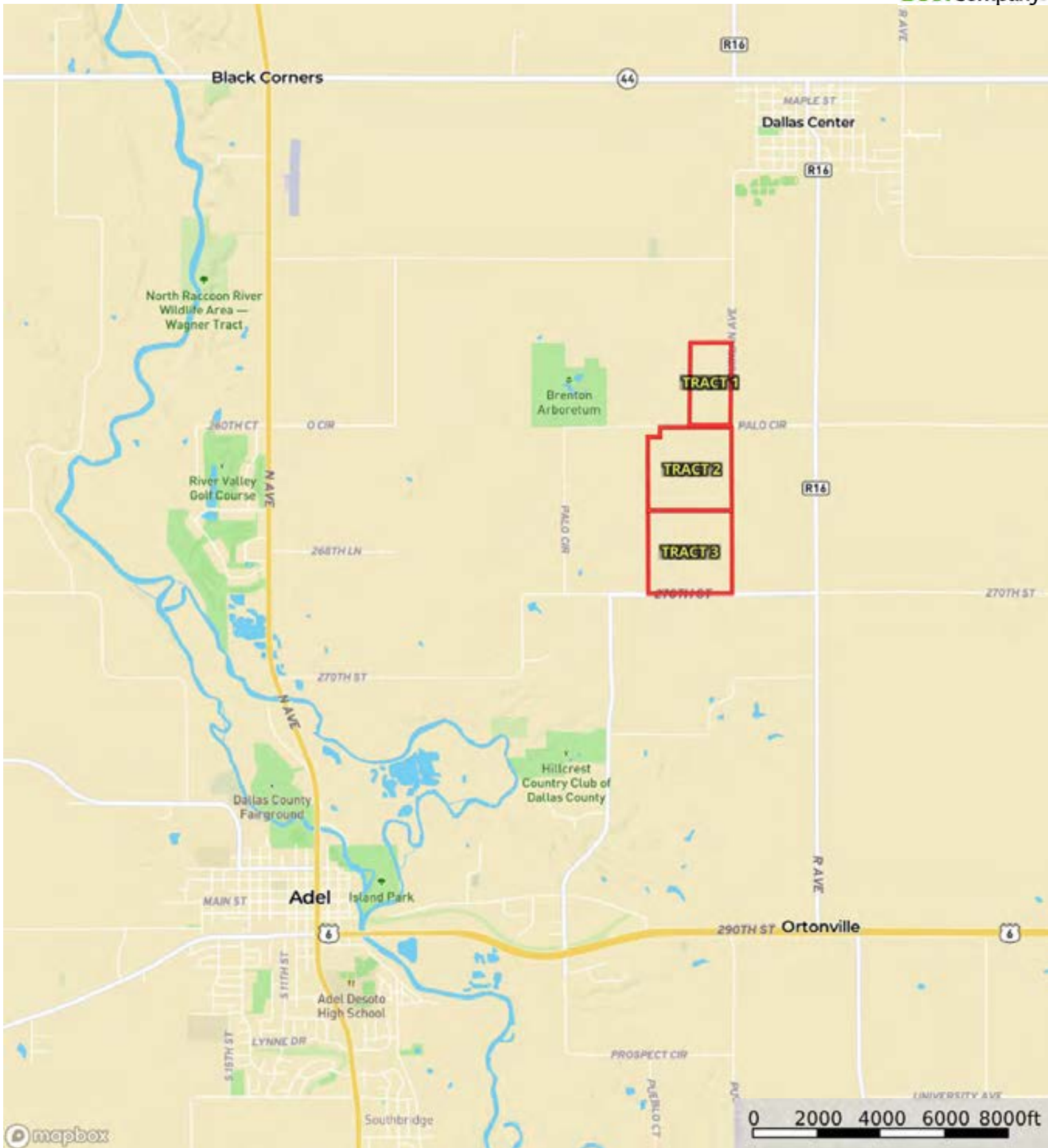
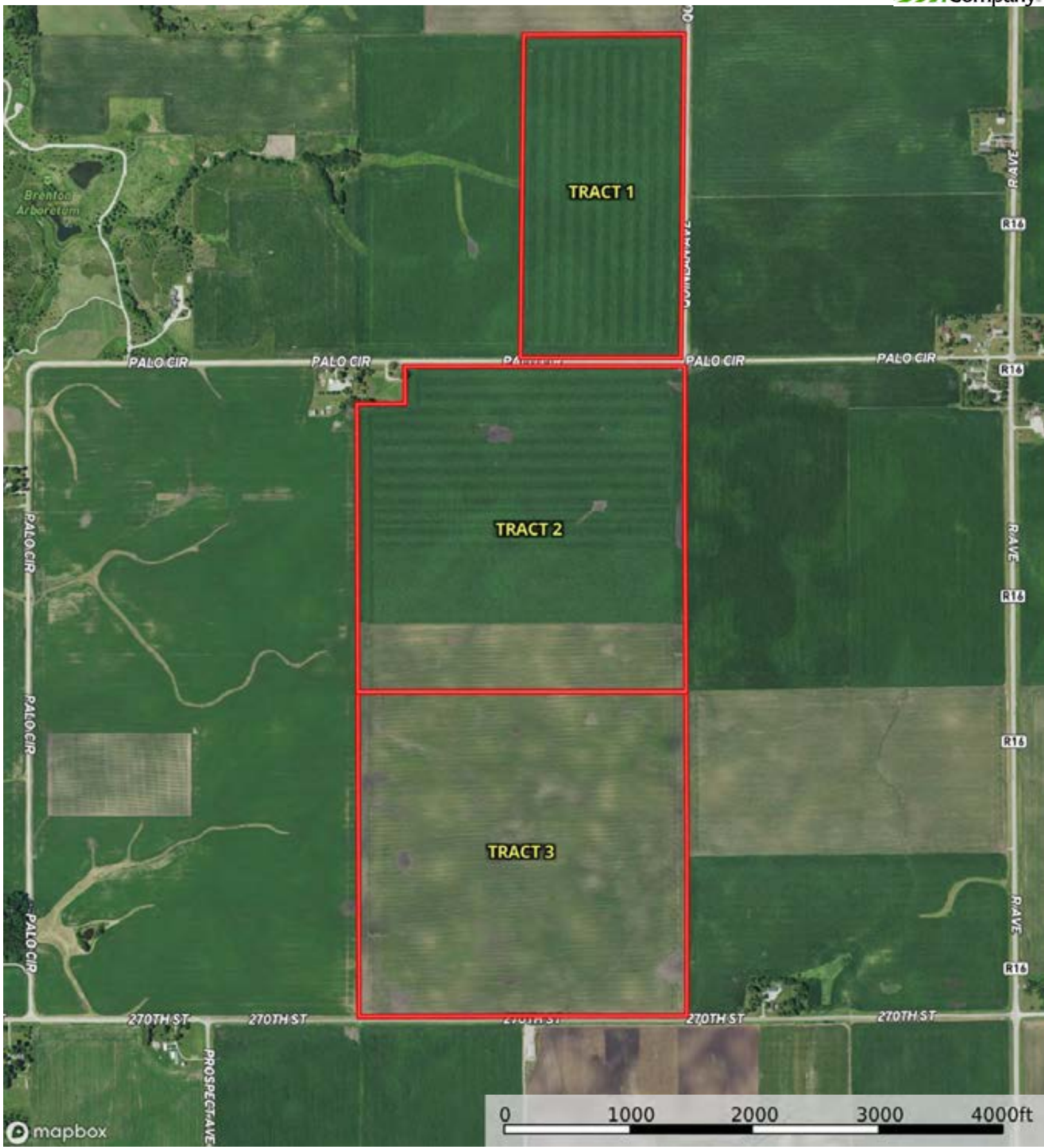


A-17481

Dallas County, Iowa, 397 AC +/-



Boundary



 Boundary



 Boundary



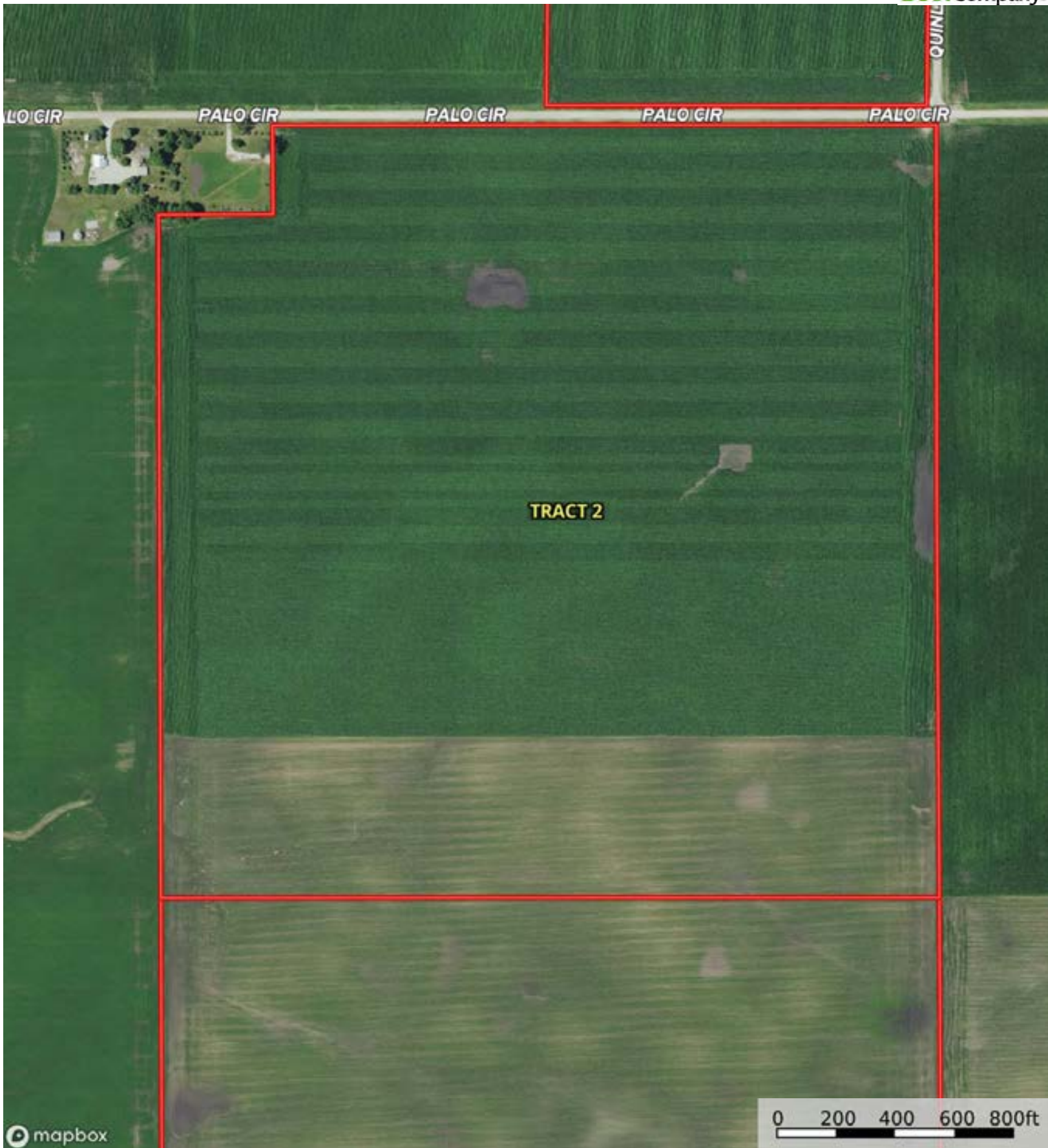
 Boundary

Boundary 76.69 ac

SOIL CODE	SOIL DESCRIPTION	ACRES	%	CSR2	CPI	NCCPI	CAP
L507	Canisteo clay loam, Bemis moraine, 0 to 2 percent slopes	45.61	59.48	87.0	0	82	2w
L55	Nicollet loam, 1 to 3 percent slopes	21.25	27.71	91.0	0	86	1
L138B	Clarion loam, Bemis moraine, 2 to 6 percent slopes	9.83	12.82	88.0	0	81	2e
TOTALS		76.69(*)	100%	88.25	-	82.99	1.72

(*) Total acres may differ in the second decimal compared to the sum of each acreage soil. This is due to a round error because we only show the acres of each soil with two decimal.

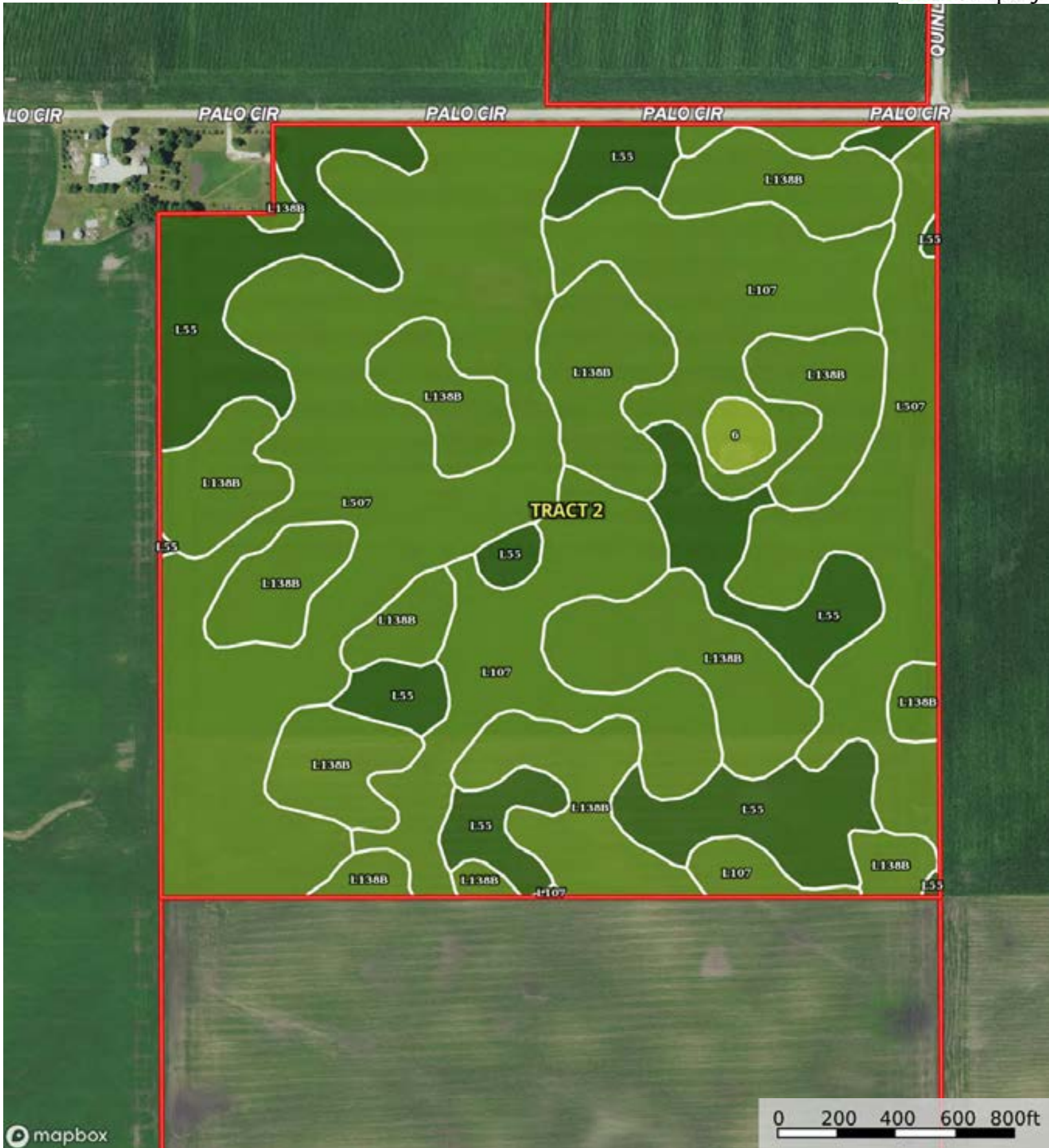




 Boundary

A-17481

Dallas County, Iowa, 397 AC +/-



Boundary

|  Boundary 155.3 ac

SOIL CODE	SOIL DESCRIPTION	ACRES	%	CSR2	CPI	NCCPI	CAP
L507	Canisteo clay loam, Bemis moraine, 0 to 2 percent slopes	52.8	34.0	87.0	0	82	2w
L138B	Clarion loam, Bemis moraine, 2 to 6 percent slopes	46.5	29.94	88.0	0	81	2e
L55	Nicollet loam, 1 to 3 percent slopes	27.93	17.98	91.0	0	86	1
L107	Webster clay loam, Bemis moraine, 0 to 2 percent slopes	27.01	17.39	88.0	0	84	2w
6	Okoboji silty clay loam, 0 to 1 percent slopes	1.06	0.68	59.0	87	75	3w
TOTALS		155.3(*)	100%	88.0	0.59	82.71	1.83

(*) Total acres may differ in the second decimal compared to the sum of each acreage soil. This is due to a round error because we only show the acres of each soil with two decimal.

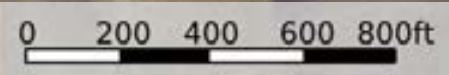




 Boundary



mapbox



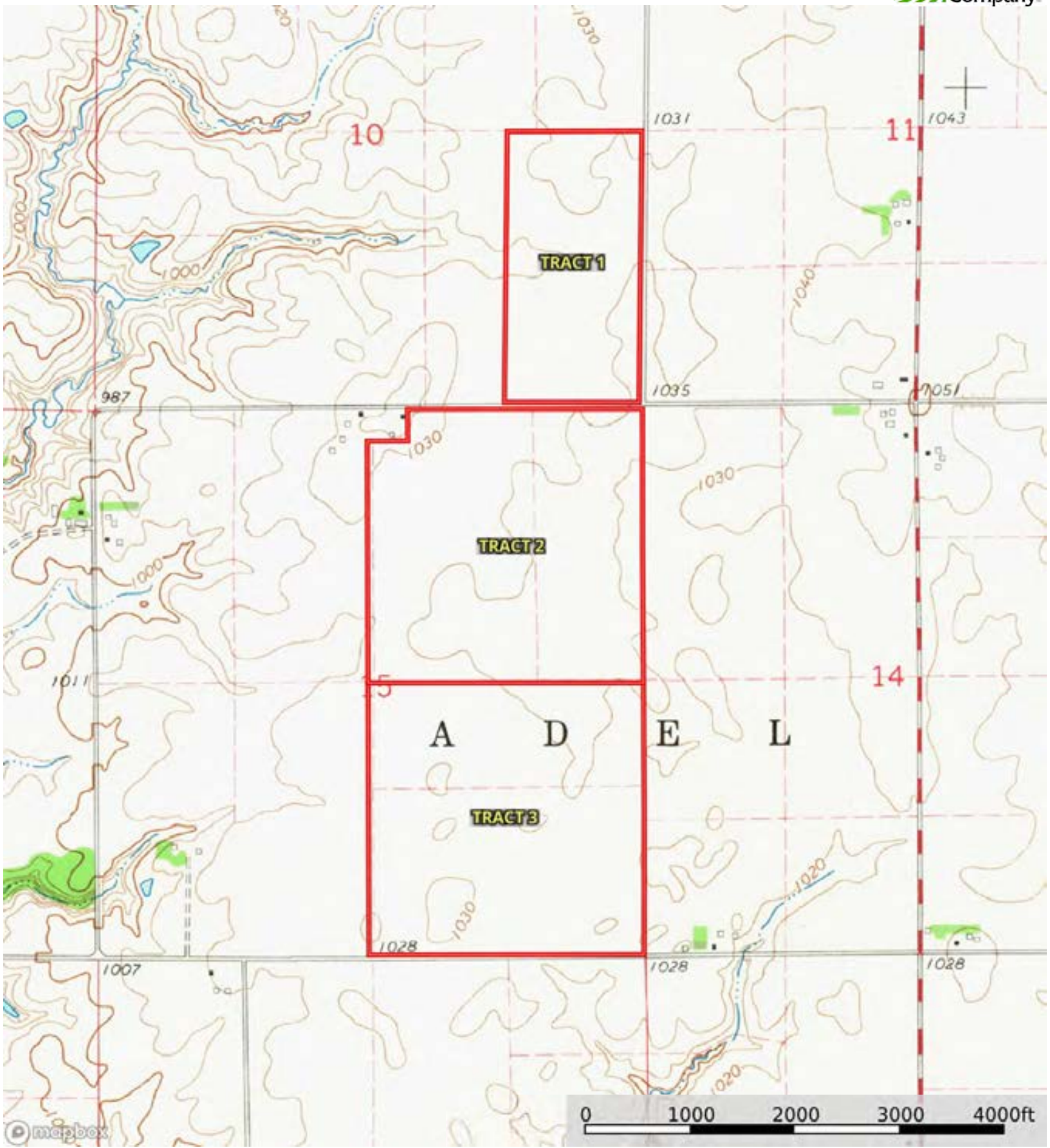
Boundary

|  Boundary 157.45 ac

SOIL CODE	SOIL DESCRIPTION	ACRES	%	CSR2	CPI	NCCPI	CAP
L138B	Clarion loam, Bemis moraine, 2 to 6 percent slopes	58.17	36.95	88.0	0	81	2e
L507	Canisteo clay loam, Bemis moraine, 0 to 2 percent slopes	36.11	22.94	87.0	0	82	2w
L55	Nicollet loam, 1 to 3 percent slopes	35.06	22.27	91.0	0	86	1
L107	Webster clay loam, Bemis moraine, 0 to 2 percent slopes	28.11	17.85	88.0	0	84	2w
TOTALS		157.45(*)	100%	88.44	-	82.88	1.78

(*) Total acres may differ in the second decimal compared to the sum of each acreage soil. This is due to a round error because we only show the acres of each soil with two decimal.





 Boundary