
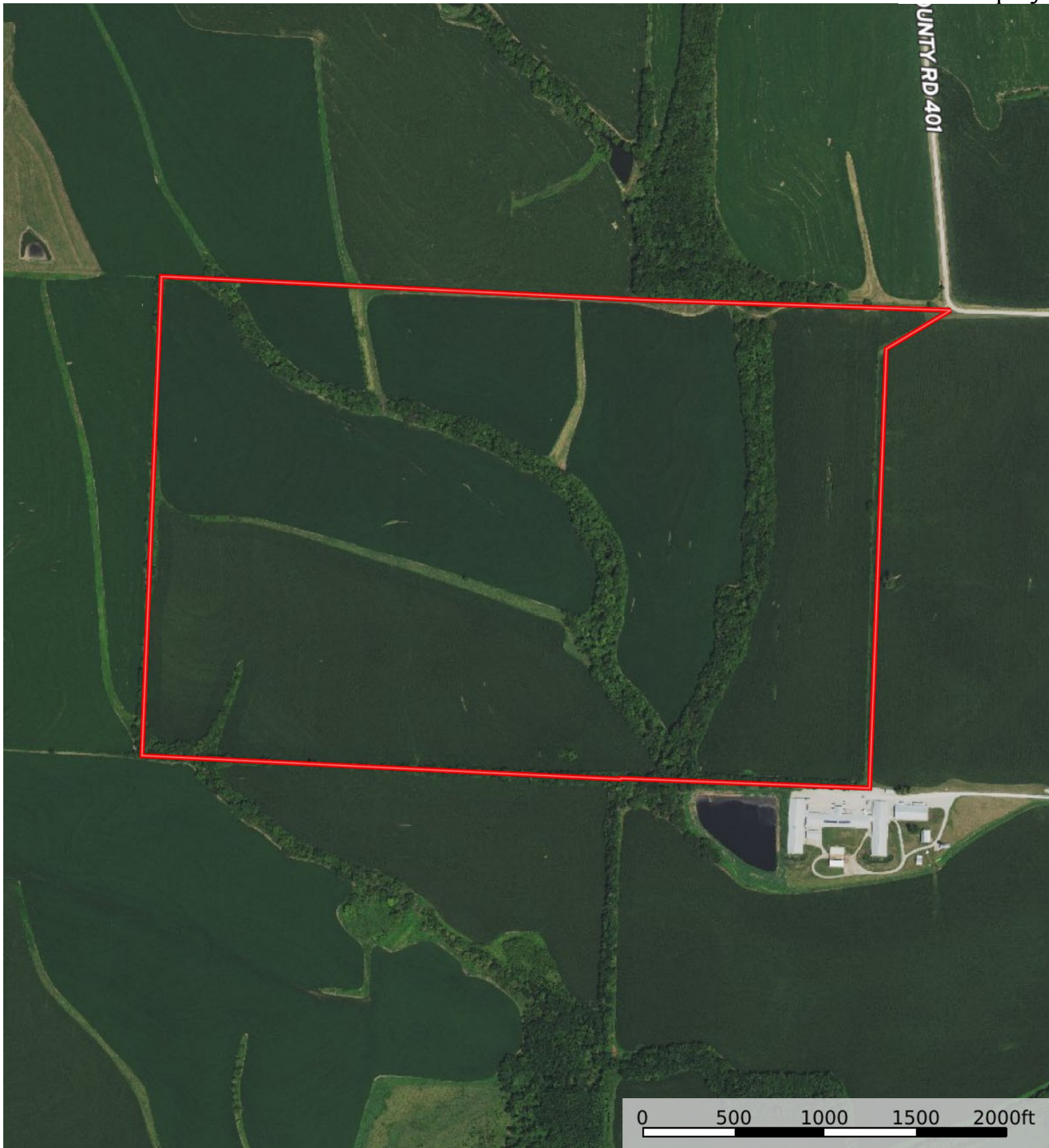



A-17536

Lafayette County, Saline County, Missouri, 242 AC +/-

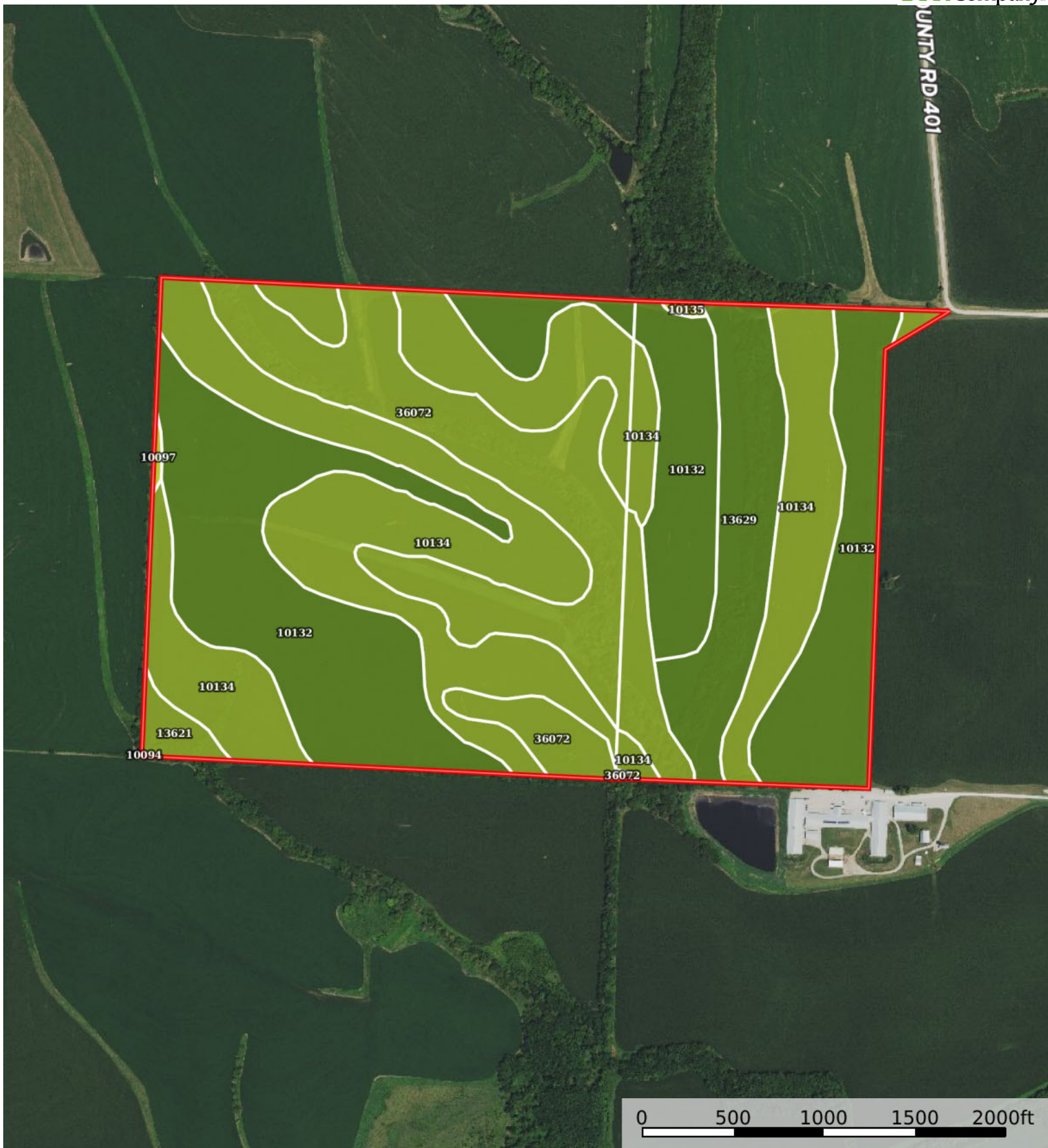



 Boundary



 Boundary





 Boundary

Boundary 244.65 ac

SOIL CODE	SOIL DESCRIPTION	ACRES	%	CPI	NCCPI	CAP
10134	Sibley silt loam, 5 to 9 percent slopes, eroded	88.3	36.09	0	86	3e
10132	Sibley silt loam, 2 to 5 percent slopes	85.46	34.93	0	92	2e
36072	Blackoar silt loam, 1 to 4 percent slopes, frequently flooded	47.16	19.28	0	70	3w
13629	Colo silt loam, 1 to 4 percent slopes, occasionally flooded	20.41	8.34	0	83	2w
13621	Blackoar and Otter silt loams, 1 to 3 percent slopes and frequently flooded soils	2.61	1.07	0	64	3w
10135	Sibley silt loam, 9 to 14 percent slopes, eroded	0.35	0.14	0	82	4e
10097	Marshall silt loam, 9 to 14 percent slopes, severely eroded	0.35	0.14	0	79	4e
10094	Marshall silt loam, 5 to 9 percent slopes, eroded	0.01	0.0	0	85	3e
TOTALS		244.65(*)	100%	-	84.51	2.57

(\*) Total acres may differ in the second decimal compared to the sum of each acreage soil. This is due to a round error because we only show the acres of each soil with two decimal.

### Capability Legend

Increased Limitations and Hazards

Decreased Adaptability and Freedom of Choice Users

Land, Capability

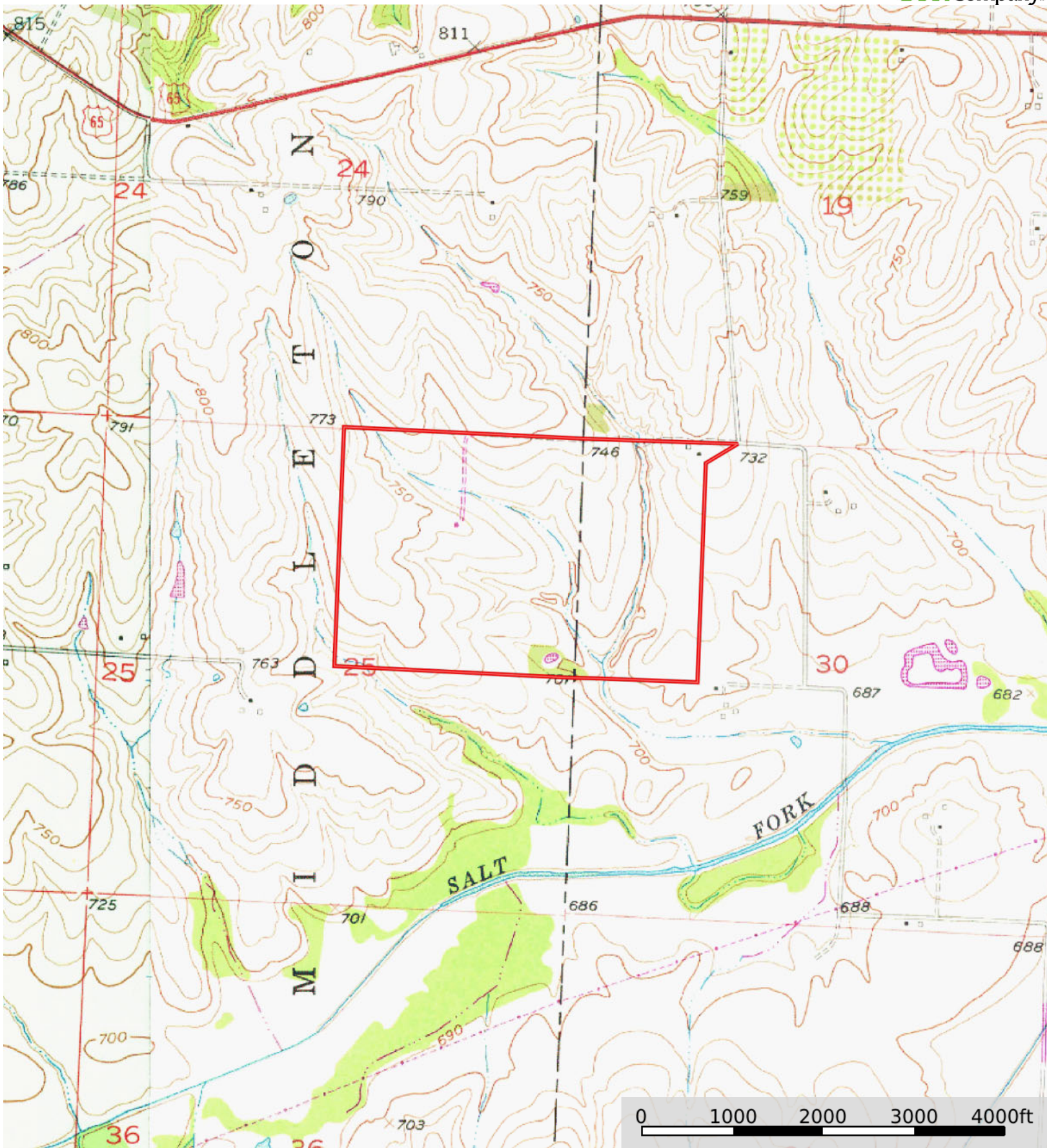
	1	2	3	4	5	6	7	8
'Wild Life'	•	•	•	•	•	•	•	•
Forestry	•	•	•	•	•	•	•	
Limited	•	•	•	•	•	•	•	
Moderate	•	•	•	•	•	•		
Intense	•	•	•	•	•			
Limited	•	•	•	•				
Moderate	•	•	•					
Intense	•	•						
Very Intense	•							


### Grazing Cultivation

(c) climatic limitations (e) susceptibility to erosion

(s) soil limitations within the rooting zone (w) excess of water





 Boundary