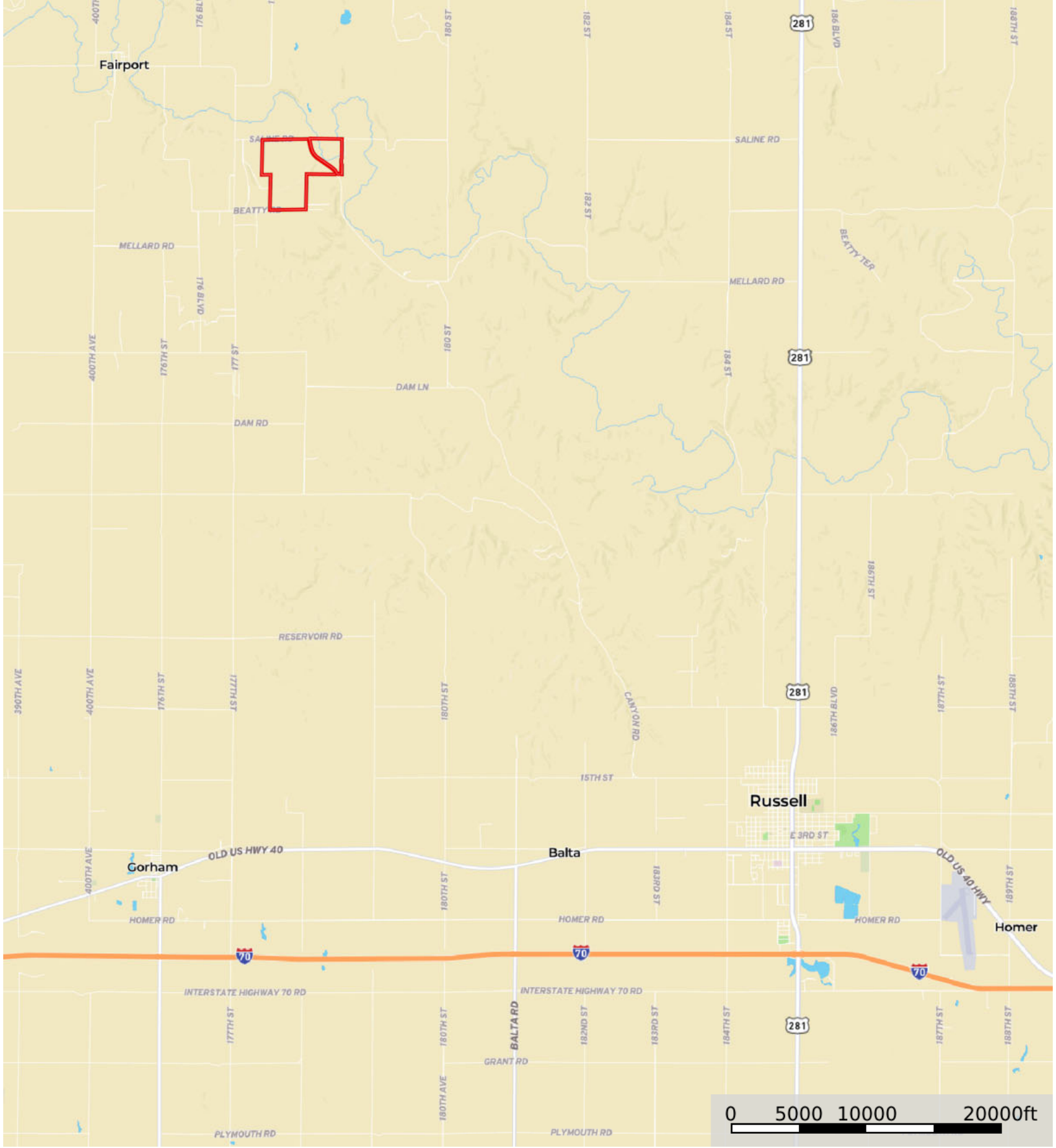

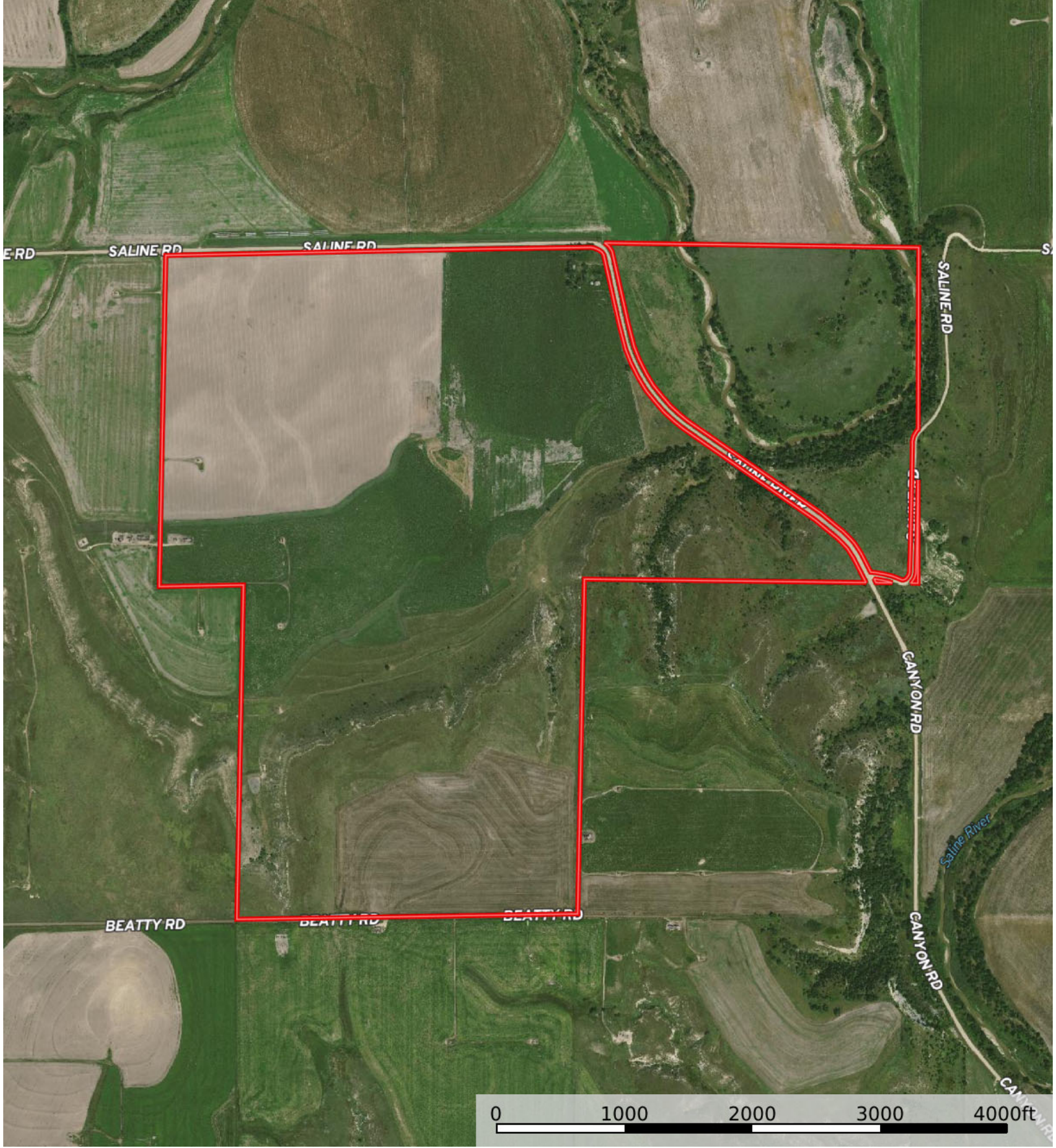


A-18016

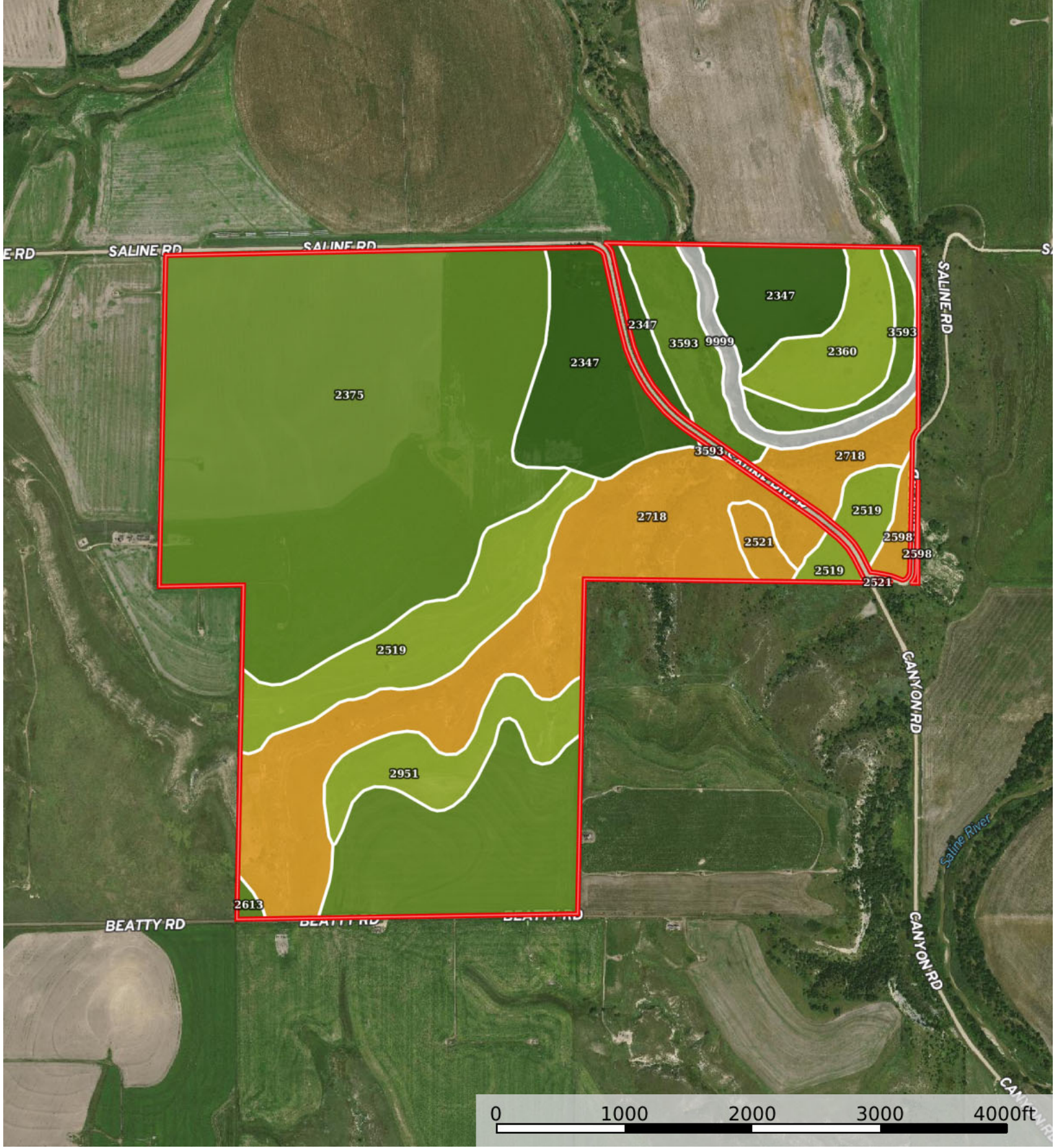
Russell County, Kansas, 520 AC +/-



 Boundary



 Boundary



 Boundary

|  All Polygons 510.77 ac

SOIL CODE	SOIL DESCRIPTION	ACRES	%	CPI	NCCPI	CAP
2375	Roxbury silt loam, rarely flooded	189.98	37.19	0	79	2e
2718	Nibson silt loam, 3 to 30 percent slopes	92.74	18.16	0	23	6e
2347	McCook silt loam, rarely flooded	54.65	10.7	0	55	1
2613	Harney silt loam, 1 to 3 percent slopes	49.57	9.7	0	70	2e
2519	Armo loam, 3 to 7 percent slopes	41.99	8.22	0	58	3e
3593	Humbarger loam, occasionally flooded	24.54	4.8	0	72	2w
2951	Wakeen silt loam, 1 to 3 percent slopes	20.9	4.09	0	48	3e
2360	Munjor fine sandy loam, rarely flooded	18.43	3.61	0	34	3e
9999	Water	9.82	1.92	0	-	-
2521	Armo loam, 7 to 15 percent slopes	4.3	0.84	0	55	6e
2598	Dorrance gravelly sandy loam, 4 to 15 percent slopes	3.85	0.75	0	25	6s
TOTALS		510.77(*)	100%	-	58.31	2.86

(*) Total acres may differ in the second decimal compared to the sum of each acreage soil. This is due to a round error because we only show the acres of each soil with two decimal.

|  Boundary 414.48 ac

SOIL CODE	SOIL DESCRIPTION	ACRES	%	CPI	NCCPI	CAP
2375	Roxbury silt loam, rarely flooded	189.98	45.83	0	79	2e
2718	Nibson silt loam, 3 to 30 percent slopes	81.6	19.69	0	23	6e
2613	Harney silt loam, 1 to 3 percent slopes	49.57	11.96	0	70	2e
2519	Armo loam, 3 to 7 percent slopes	36.1	8.71	0	58	3e
2347	McCook silt loam, rarely flooded	31.79	7.67	0	55	1
2951	Wakeen silt loam, 1 to 3 percent slopes	20.9	5.04	0	48	3e
2521	Armo loam, 7 to 15 percent slopes	4.29	1.04	0	55	6e
3593	Humbarger loam, occasionally flooded	0.24	0.06	0	72	2w
2598	Dorrance gravelly sandy loam, 4 to 15 percent slopes	0.01	0.0	0	25	6s
TOTALS		414.48(*)	100%	-	61.41	2.89

(*) Total acres may differ in the second decimal compared to the sum of each acreage soil. This is due to a round error because we only show the acres of each soil with two decimal.

|  Boundary 96.07 ac

SOIL CODE	SOIL DESCRIPTION	ACRES	%	CPI	NCCPI	CAP
3593	Humbarger loam, occasionally flooded	24.3	25.29	0	72	2w
2347	McCook silt loam, rarely flooded	22.86	23.79	0	55	1

2360	Munjor fine sandy loam, rarely flooded	18.43	19.18	0	34	3e
2718	Nibson silt loam, 3 to 30 percent slopes	11.14	11.59	0	23	6e
9999	Water	9.82	10.22	0	-	-
2519	Armo loam, 3 to 7 percent slopes	5.89	6.13	0	58	3e
2598	Dorrance gravelly sandy loam, 4 to 15 percent slopes	3.63	3.78	0	25	6s
TOTALS		96.07(*)	100%	-	44.98	2.7

(*) Total acres may differ in the second decimal compared to the sum of each acreage soil. This is due to a round error because we only show the acres of each soil with two decimal.

| Boundary 0.17 ac

SOIL CODE	SOIL DESCRIPTION	ACRES	%	CPI	NCCPI	CAP
2598	Dorrance gravelly sandy loam, 4 to 15 percent slopes	0.17	100.0	0	25	6s
TOTALS		0.17(*)	100%	-	25.0	6.0

(*) Total acres may differ in the second decimal compared to the sum of each acreage soil. This is due to a round error because we only show the acres of each soil with two decimal.

| Boundary 0.05 ac

SOIL CODE	SOIL DESCRIPTION	ACRES	%	CPI	NCCPI	CAP
2598	Dorrance gravelly sandy loam, 4 to 15 percent slopes	0.04	80	0	25	6s
2521	Armo loam, 7 to 15 percent slopes	0.01	20	0	55	6e
TOTALS		0.05(*)	100%	-	31.0	5









(*) Total acres may differ in the second decimal compared to the sum of each acreage soil. This is due to a round error because we only show the acres of each soil with two decimal.

Capability Legend

Increased Limitations and Hazards

Decreased Adaptability and Freedom of Choice Users

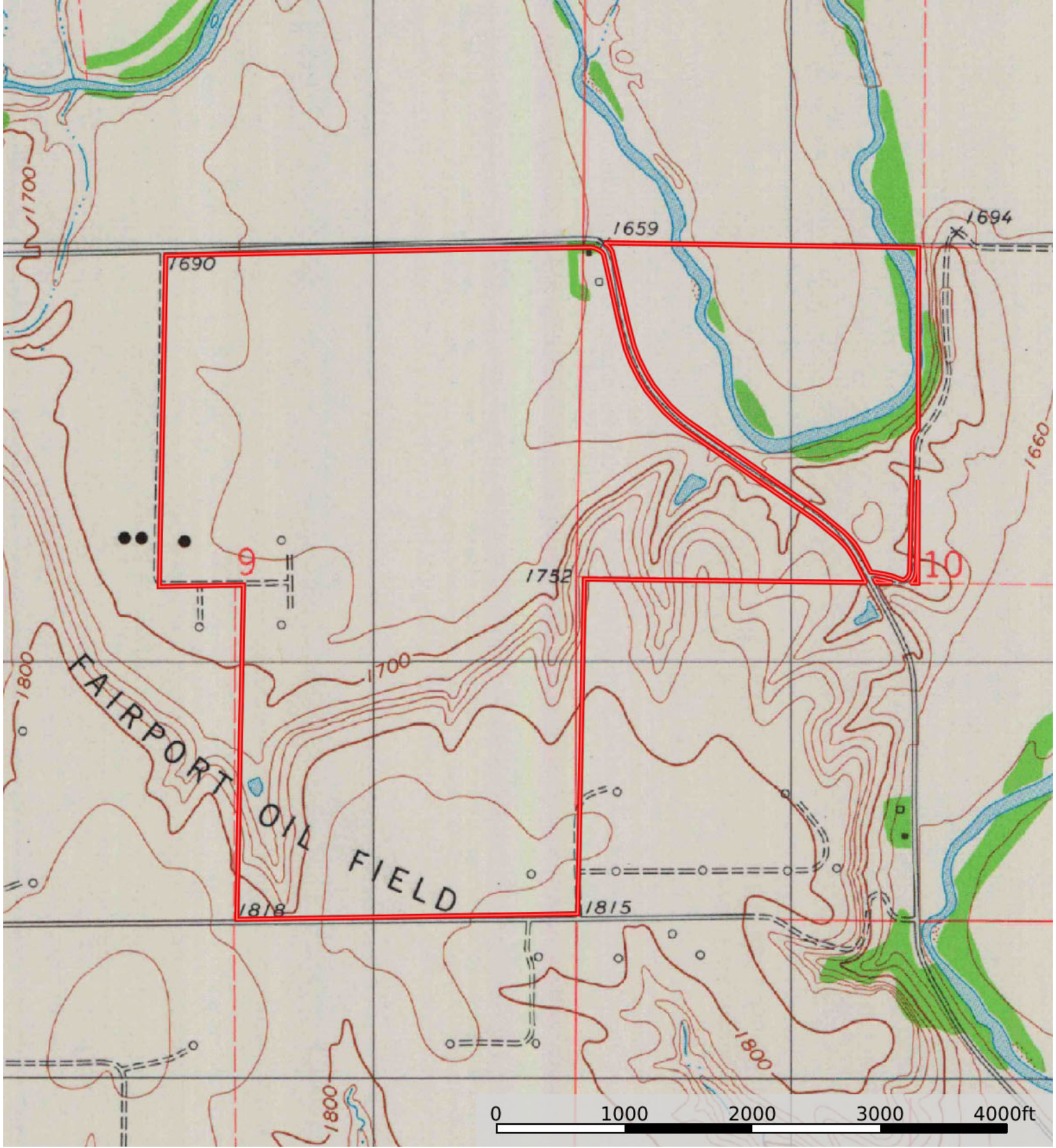
Land, Capability

								
	1	2	3	4	5	6	7	8
'Wild Life'	•	•	•	•	•	•	•	•
Forestry	•	•	•	•	•	•	•	
Limited	•	•	•	•	•	•	•	
Moderate	•	•	•	•	•	•		
Intense	•	•	•	•	•			
Limited	•	•	•	•				
Moderate	•	•	•					
Intense	•	•						
Very Intense	•							

Grazing Cultivation

(c) climatic limitations (e) susceptibility to erosion

(s) soil limitations within the rooting zone (w) excess of water



 Boundary