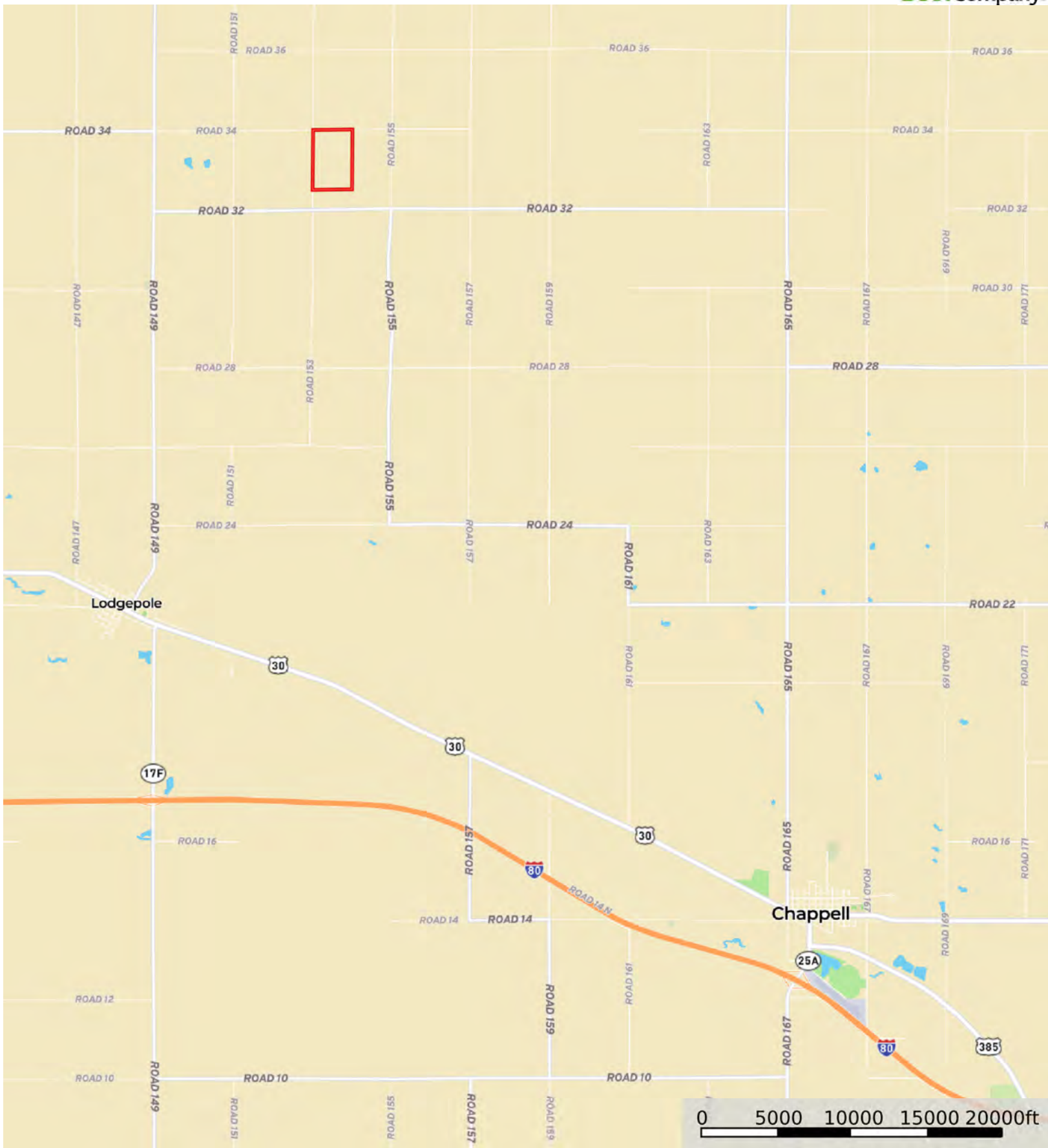



A-18717

Garden County, Nebraska, 240.17 AC +/-



 Boundary



 Boundary

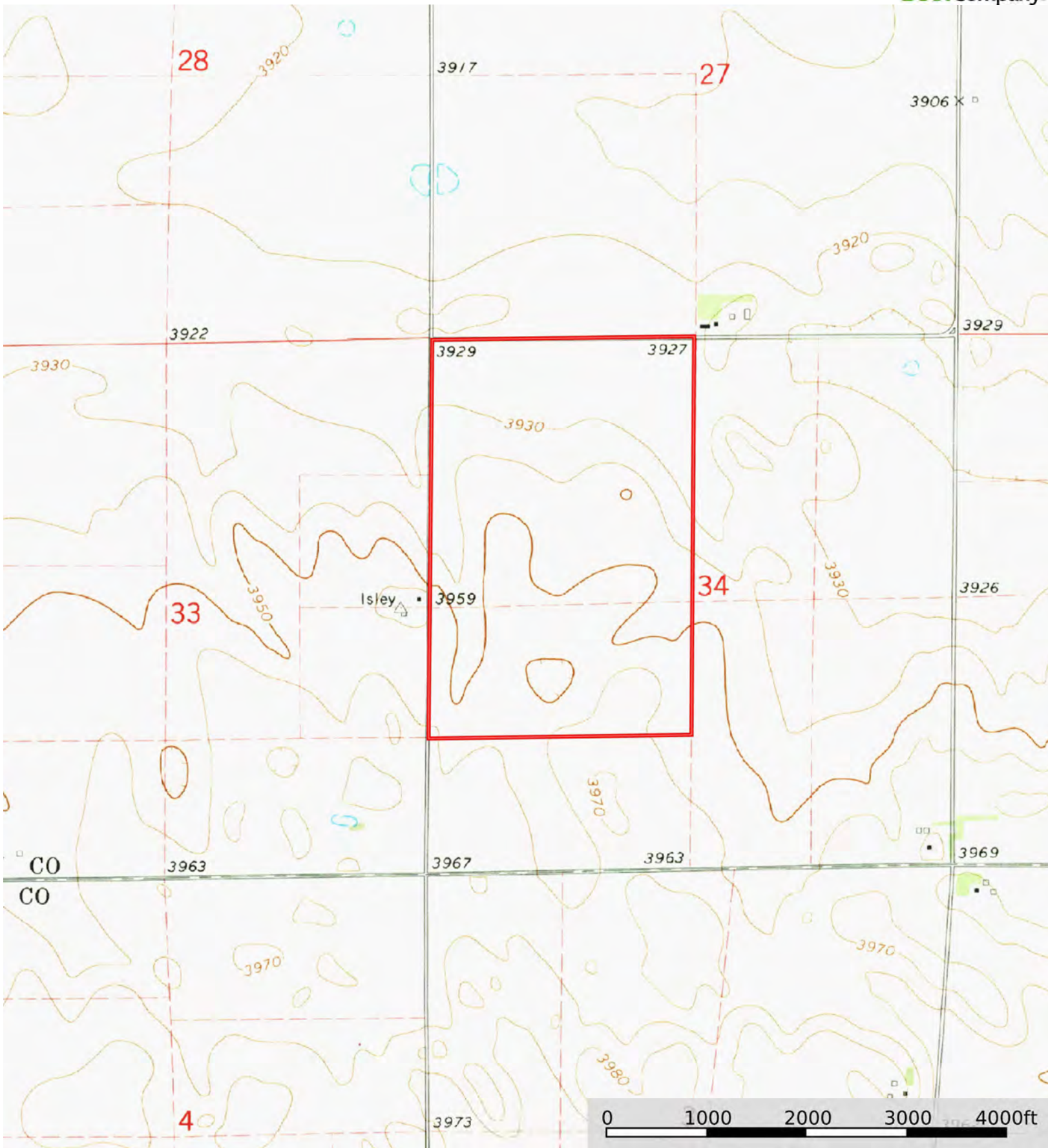



|  Boundary 240.02 ac

SOIL CODE	SOIL DESCRIPTION	ACRES	%	CPI	NCCPI	CAP
1650	Kuma loam, 0 to 1 percent slopes	86.51	36.04	0	58	2c
1838	Sidney loam, 3 to 6 percent slopes	74.83	31.18	0	38	3e
5101	Alliance loam, 1 to 3 percent slopes	49.37	20.57	0	48	2e
5942	Duroc loam, 0 to 1 percent slopes	21.07	8.78	0	62	2c
1618	Keith loam, 1 to 3 percent slopes	8.24	3.43	0	55	2e
TOTALS		240.0 2(*)	100%	-	49.96	2.31

(\*) Total acres may differ in the second decimal compared to the sum of each acreage soil. This is due to a round error because we only show the acres of each soil with two decimal.





 Boundary