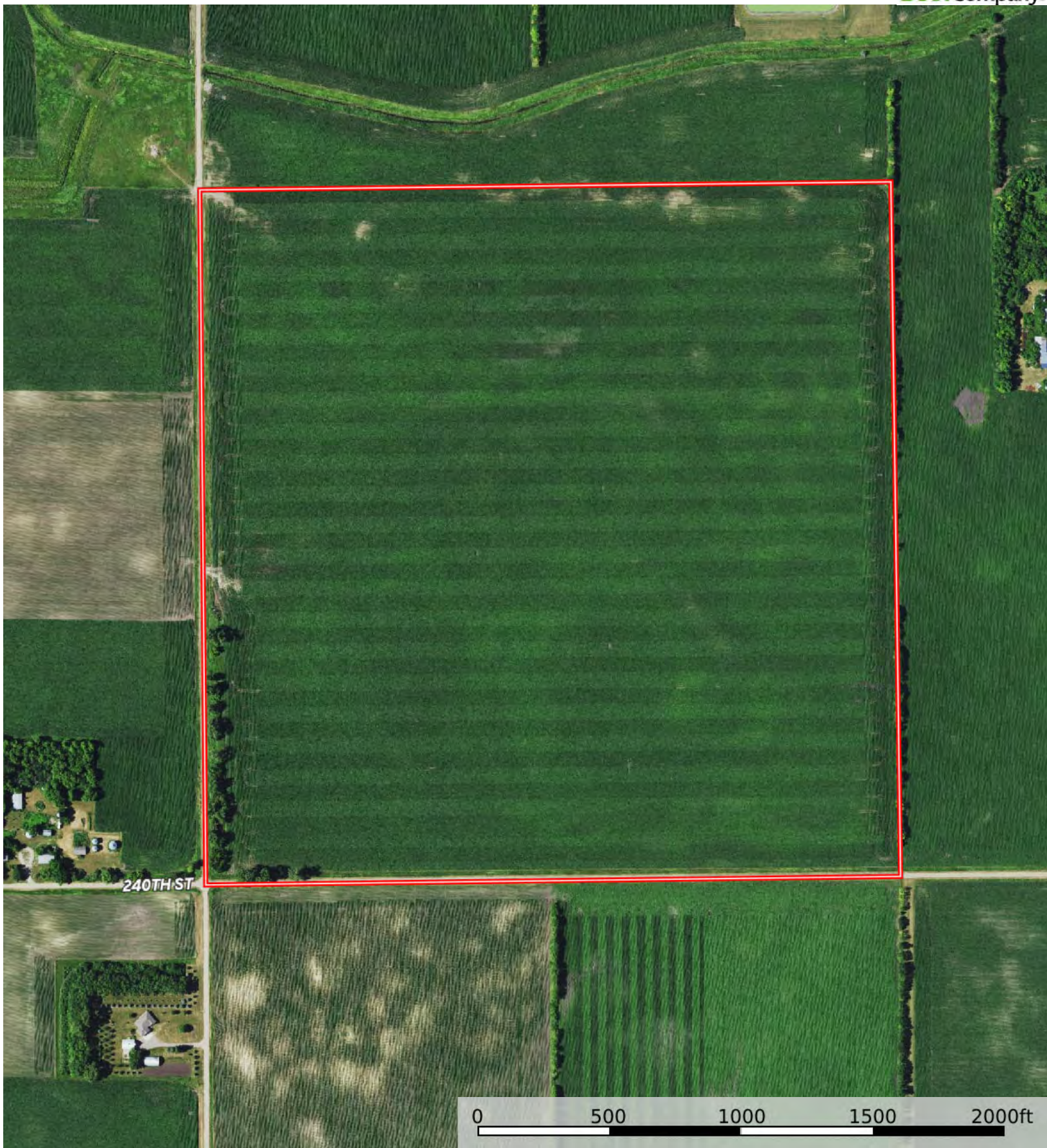
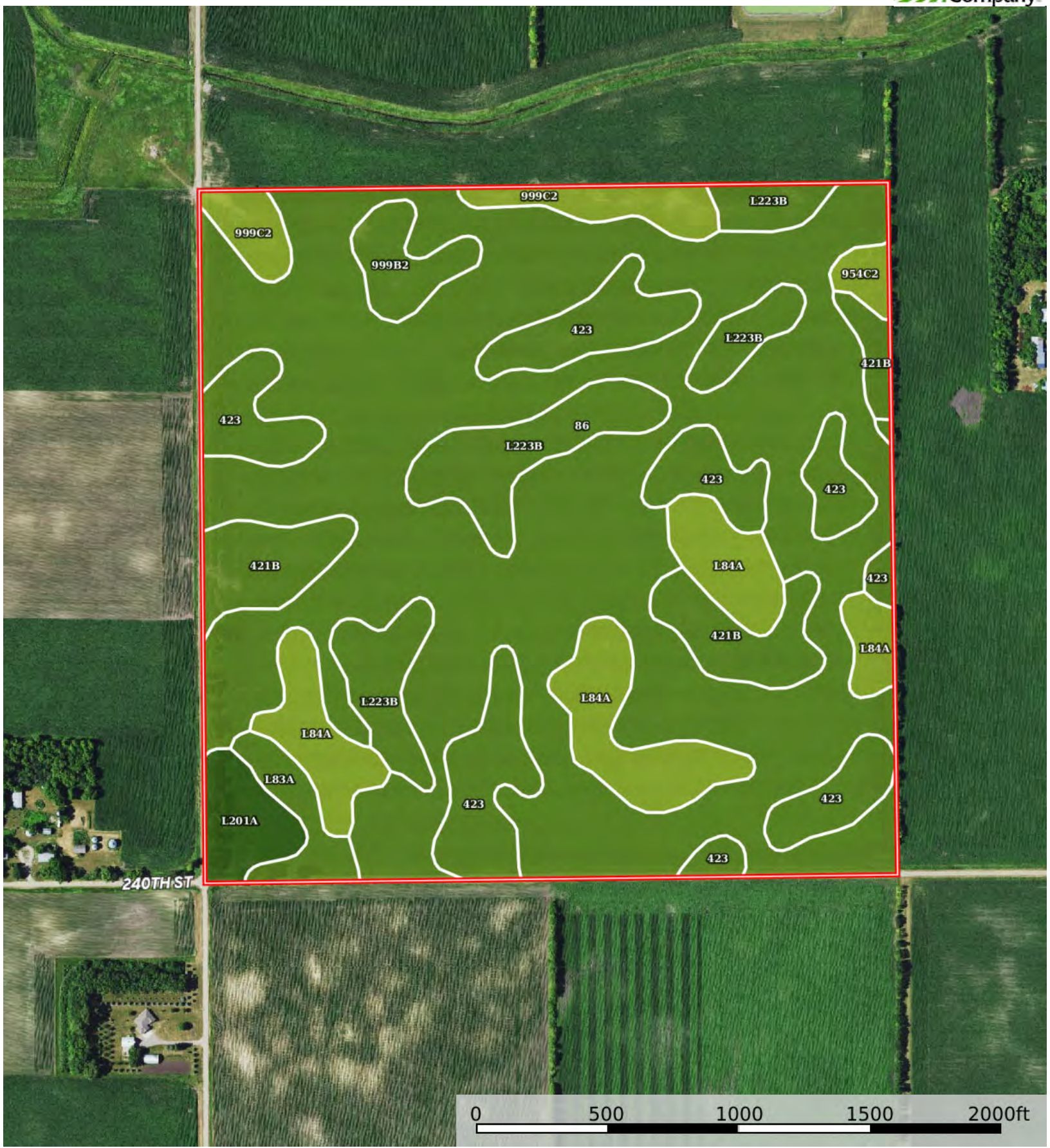
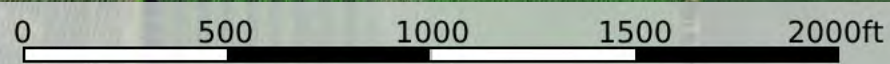
 Boundary




 Boundary



240TH ST



 Boundary

| Boundary 160.02 ac

| SOIL CODE | SOIL DESCRIPTION | ACRES | % | CPI | NCCPI | CAP |
|-----------|--|---------------|-------|-------|-------|-----|
| 86 | Canisteo clay loam, 0 to 2 percent slopes | 92.04 | 57.51 | 93 | 82 | 2w |
| 423 | Seaforth loam, 1 to 3 percent slopes | 19.2 | 12.0 | 95 | 84 | 2s |
| L84A | Glencoe clay loam, 0 to 1 percent slopes | 13.57 | 8.48 | 86 | 76 | 3w |
| L223B | Amiret-Swanlake loams, 2 to 6 percent slopes | 12.47 | 7.79 | 92 | 81 | 2e |
| 421B | Amiret loam, 2 to 6 percent slopes | 8.75 | 5.47 | 98 | 83 | 2e |
| 999C2 | Storden-Estherville-Ves loams, 6 to 12 percent slopes, eroded | 4.52 | 2.82 | 63 | 59 | 3e |
| L201A | Normania loam, 1 to 3 percent slopes | 3.08 | 1.92 | 99 | 84 | 1 |
| 999B2 | Ves-Estherville-Storden complex, 3 to 6 percent slopes, eroded | 2.78 | 1.74 | 69 | 59 | 2e |
| L83A | Webster clay loam, 0 to 2 percent slopes | 2.58 | 1.61 | 93 | 83 | 2w |
| 954C2 | Storden-Ves complex, 6 to 10 percent slopes, moderately eroded | 1.03 | 0.64 | 77 | 70 | 3e |
| TOTALS | | 160.0 2(*) | 100% | 91.58 | 80.63 | 2.1 |









(*) Total acres may differ in the second decimal compared to the sum of each acreage soil. This is due to a round error because we only show the acres of each soil with two decimal.

Capability Legend

Increased Limitations and Hazards

Decreased Adaptability and Freedom of Choice Users

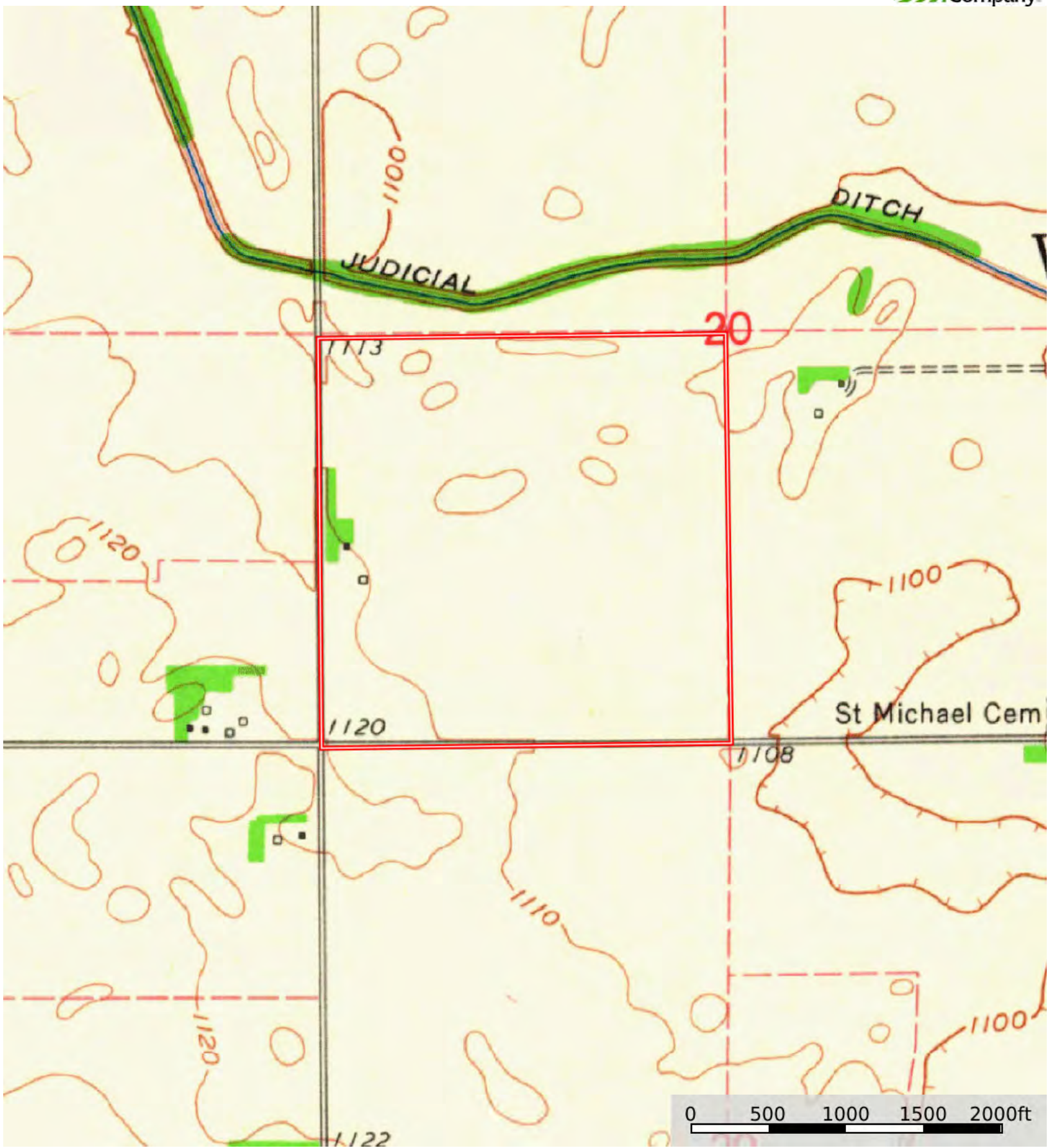
Land, Capability


| |  |  |  |  |  |  |  |  |
|--------------|---|---|---|---|--|---|---|---|
| | 1 | 2 | 3 | 4 | 5 | 6 | 7 | 8 |
| 'Wild Life' | • | • | • | • | • | • | • | • |
| Forestry | • | • | • | • | • | • | • | |
| Limited | • | • | • | • | • | • | • | |
| Moderate | • | • | • | • | • | • | | |
| Intense | • | • | • | • | • | | | |
| Limited | • | • | • | • | | | | |
| Moderate | • | • | • | | | | | |
| Intense | • | • | | | | | | |
| Very Intense | • | | | | | | | |

Grazing Cultivation

(c) climatic limitations (e) susceptibility to erosion

(s) soil limitations within the rooting zone (w) excess of water



 Boundary