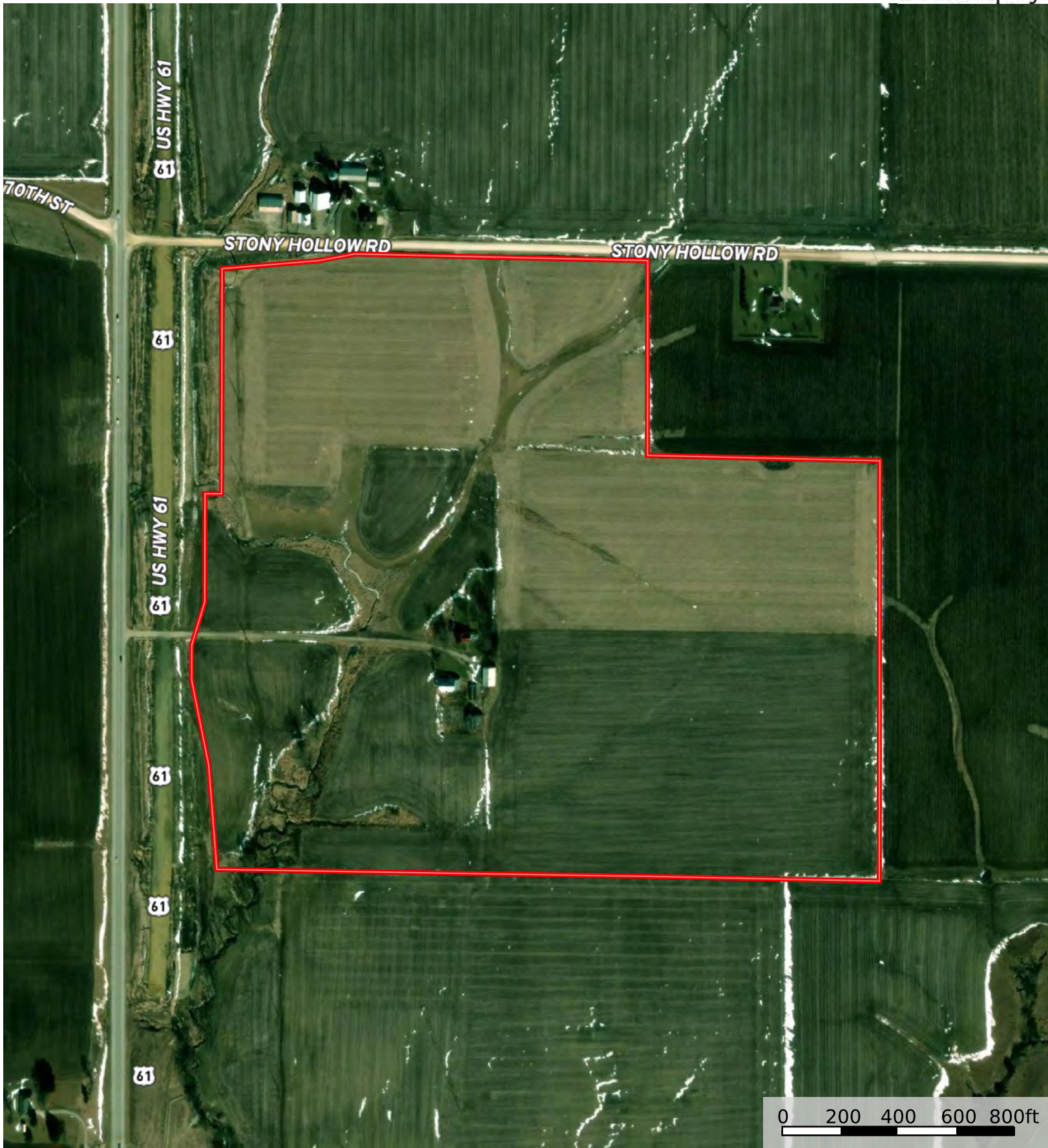

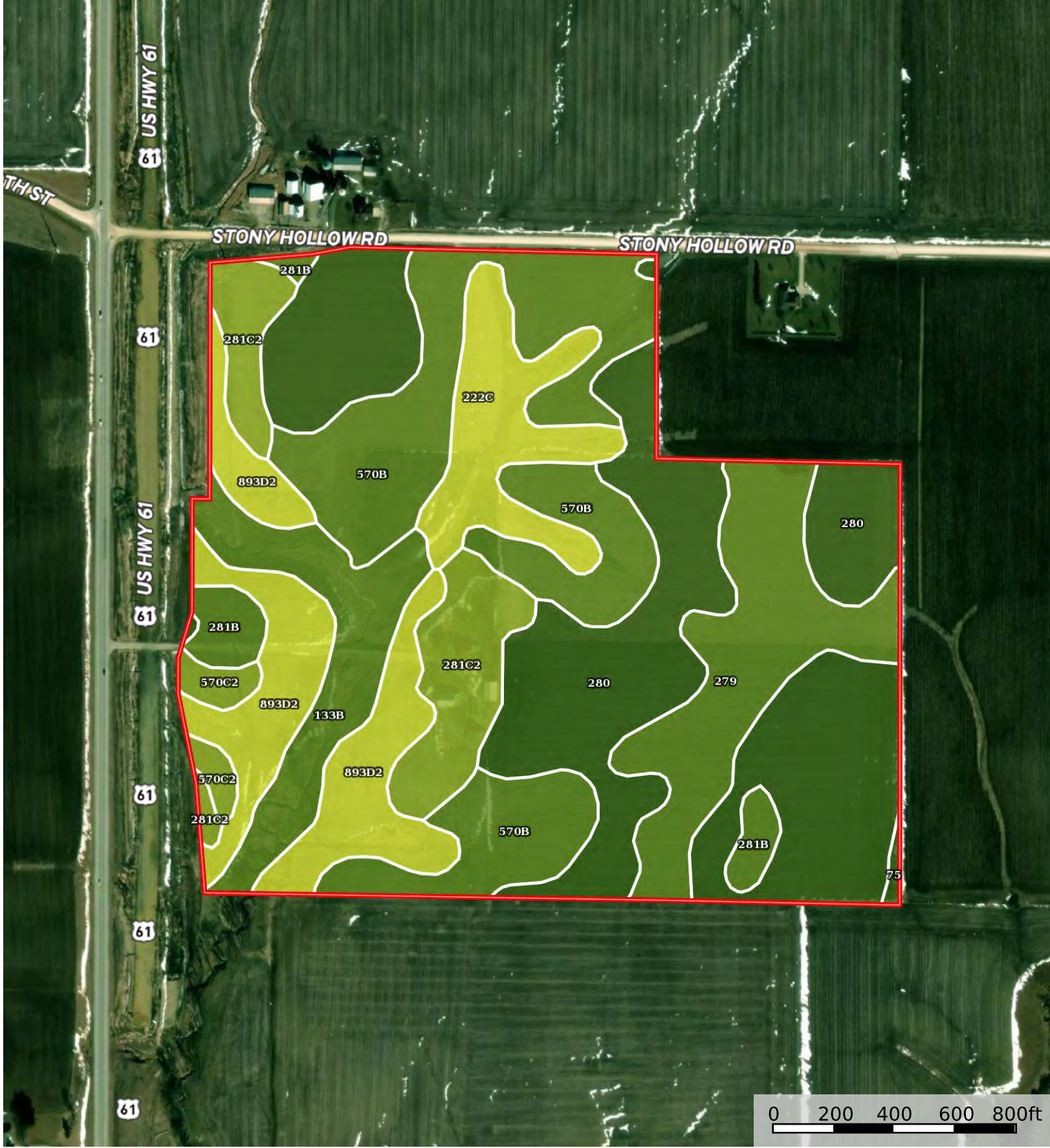


 Boundary



 Boundary



 Boundary

|  Boundary 100.49 ac

SOIL CODE	SOIL DESCRIPTION	ACRES	%	CSR2	CPI	NCCPI	CAP
280	Mahaska silty clay loam, 0 to 2 percent slopes	31.43	31.27	94.0	0	87	1
570B	Nira silty clay loam, 2 to 5 percent slopes	20.64	20.54	80.0	0	98	2e
893D2	Gara-Rinda complex, 9 to 14 percent slopes, moderately eroded	11.94	11.88	39.0	0	73	4e
279	Taintor silty clay loam, 0 to 2 percent slopes	10.78	10.73	83.0	0	84	2w
281C2	Otley silty clay loam, 5 to 9 percent slopes, eroded	7.59	7.55	82.0	0	83	3e
133B	Colo silty clay loam, 2 to 5 percent slopes, occasionally flooded	7.31	7.27	75.0	0	96	2w
222C	Clarinda silty clay loam, 5 to 9 percent slopes	6.76	6.73	42.0	0	74	4w
281B	Otley silty clay loam, 2 to 5 percent slopes	2.45	2.44	91.0	0	89	2e
570C2	Nira silty clay loam, 5 to 9 percent slopes, moderately eroded	1.37	1.36	71.0	0	92	3e
75	Givin silt loam, 1 to 3 percent slopes	0.22	0.22	80.0	0	92	1
TOTALS		100.5(*)	100%	77.2	-	86.87	2.15









(*) Total acres may differ in the second decimal compared to the sum of each acreage soil. This is due to a round error because we only show the acres of each soil with two decimal.

Capability Legend

Increased Limitations and Hazards

Decreased Adaptability and Freedom of Choice Users

Land, Capability

								
	1	2	3	4	5	6	7	8
'Wild Life'	•	•	•	•	•	•	•	•
Forestry	•	•	•	•	•	•	•	
Limited	•	•	•	•	•	•	•	
Moderate	•	•	•	•	•	•		
Intense	•	•	•	•	•			
Limited	•	•	•	•				
Moderate	•	•	•					
Intense	•	•						
Very Intense	•							

Grazing Cultivation

(c) climatic limitations (e) susceptibility to erosion

(s) soil limitations within the rooting zone (w) excess of water



Boundary

|  All Polygons 84.75 ac

SOIL CODE	SOIL DESCRIPTION	ACRES	%	CSR2	CPI	NCCPI	CAP
280	Mahaska silty clay loam, 0 to 2 percent slopes	30.64	36.14	94.0	0	87	1
570B	Nira silty clay loam, 2 to 5 percent slopes	18.84	22.22	80.0	0	98	2e
279	Taintor silty clay loam, 0 to 2 percent slopes	10.68	12.6	83.0	0	84	2w
893D2	Gara-Rinda complex, 9 to 14 percent slopes, moderately eroded	9.87	11.64	39.0	0	73	4e
281C2	Otley silty clay loam, 5 to 9 percent slopes, eroded	4.75	5.6	82.0	0	83	3e
222C	Clarinda silty clay loam, 5 to 9 percent slopes	4.66	5.5	42.0	0	74	4w
281B	Otley silty clay loam, 2 to 5 percent slopes	2.18	2.57	91.0	0	89	2e
133B	Colo silty clay loam, 2 to 5 percent slopes, occasionally flooded	1.69	1.99	75.0	0	96	2w
570C2	Nira silty clay loam, 5 to 9 percent slopes, moderately eroded	1.29	1.52	71.0	0	92	3e
75	Givin silt loam, 1 to 3 percent slopes	0.15	0.18	80.0	0	92	1
TOTALS		84.77(*)	100%	78.71	-	86.79	2.05

(*) Total acres may differ in the second decimal compared to the sum of each acreage soil. This is due to a round error because we only show the acres of each soil with two decimal.

|  Boundary 48.76 ac

SOIL CODE	SOIL DESCRIPTION	ACRES	%	CSR2	CPI	NCCPI	CAP
280	Mahaska silty clay loam, 0 to 2 percent slopes	25.1	51.48	94.0	0	87	1
279	Taintor silty clay loam, 0 to 2 percent slopes	10.68	21.9	83.0	0	84	2w
570B	Nira silty clay loam, 2 to 5 percent slopes	8.24	16.9	80.0	0	98	2e
222C	Clarinda silty clay loam, 5 to 9 percent slopes	2.39	4.9	42.0	0	74	4w
281B	Otley silty clay loam, 2 to 5 percent slopes	0.89	1.83	91.0	0	89	2e
281C2	Otley silty clay loam, 5 to 9 percent slopes, eroded	0.86	1.76	82.0	0	83	3e
893D2	Gara-Rinda complex, 9 to 14 percent slopes, moderately eroded	0.4	0.82	39.0	0	73	4e
75	Givin silt loam, 1 to 3 percent slopes	0.15	0.31	80.0	0	92	1
133B	Colo silty clay loam, 2 to 5 percent slopes, occasionally flooded	0.05	0.1	75.0	0	96	2w
TOTALS		84.77(*)	100%	85.9	-	87.44	1.61

(*) Total acres may differ in the second decimal compared to the sum of each acreage soil. This is due to a round error because we only show the acres of each soil with two decimal.

|  Boundary 7.09 ac

SOIL CODE	SOIL DESCRIPTION	ACRES	%	CSR2	CPI	NCCPI	CAP
893D2	Gara-Rinda complex, 9 to 14 percent slopes, moderately eroded	3.56	50.28	39.0	0	73	4e

570B	Nira silty clay loam, 2 to 5 percent slopes	1.8	25.42	80.0	0	98	2e
281C2	Otley silty clay loam, 5 to 9 percent slopes, eroded	1.37	19.35	82.0	0	83	3e
133B	Colo silty clay loam, 2 to 5 percent slopes, occasionally flooded	0.35	4.94	75.0	0	96	2w
280	Mahaska silty clay loam, 0 to 2 percent slopes	0.01	0.14	94.0	0	87	1
TOTALS		84.77(*)	100%	59.66	-	82.55	3.2

(*) Total acres may differ in the second decimal compared to the sum of each acreage soil. This is due to a round error because we only show the acres of each soil with two decimal.

| Boundary 4.75 ac

SOIL CODE	SOIL DESCRIPTION	ACRES	%	CSR2	CPI	NCCPI	CAP
893D2	Gara-Rinda complex, 9 to 14 percent slopes, moderately eroded	2.8	58.95	39.0	0	73	4e
570C2	Nira silty clay loam, 5 to 9 percent slopes, moderately eroded	1.29	27.16	71.0	0	92	3e
133B	Colo silty clay loam, 2 to 5 percent slopes, occasionally flooded	0.22	4.63	75.0	0	96	2w
281B	Otley silty clay loam, 2 to 5 percent slopes	0.22	4.63	91.0	0	89	2e
281C2	Otley silty clay loam, 5 to 9 percent slopes, eroded	0.22	4.63	82.0	0	83	3e
TOTALS		84.77(*)	100%	53.76	-	80.43	3.5

(*) Total acres may differ in the second decimal compared to the sum of each acreage soil. This is due to a round error because we only show the acres of each soil with two decimal.

| Boundary 3.29 ac

SOIL CODE	SOIL DESCRIPTION	ACRES	%	CSR2	CPI	NCCPI	CAP
893D2	Gara-Rinda complex, 9 to 14 percent slopes, moderately eroded	1.58	47.88	39.0	0	73	4e
281B	Otley silty clay loam, 2 to 5 percent slopes	0.91	27.58	91.0	0	89	2e
133B	Colo silty clay loam, 2 to 5 percent slopes, occasionally flooded	0.76	23.03	75.0	0	96	2w
280	Mahaska silty clay loam, 0 to 2 percent slopes	0.04	1.21	94.0	0	87	1
TOTALS		84.77(*)	100%	62.18	-	82.66	2.95

(*) Total acres may differ in the second decimal compared to the sum of each acreage soil. This is due to a round error because we only show the acres of each soil with two decimal.

| Boundary 18.0 ac

SOIL CODE	SOIL DESCRIPTION	ACRES	%	CSR2	CPI	NCCPI	CAP
570B	Nira silty clay loam, 2 to 5 percent slopes	6.19	34.37	80.0	0	98	2e
280	Mahaska silty clay loam, 0 to 2 percent slopes	5.44	30.21	94.0	0	87	1
281C2	Otley silty clay loam, 5 to 9 percent slopes, eroded	2.3	12.77	82.0	0	83	3e

222C	Clarinda silty clay loam, 5 to 9 percent slopes	2.07	11.49	42.0	0	74	4w
893D2	Gara-Rinda complex, 9 to 14 percent slopes, moderately eroded	1.53	8.5	39.0	0	73	4e
133B	Colo silty clay loam, 2 to 5 percent slopes, occasionally flooded	0.31	1.72	75.0	0	96	2w
281B	Otley silty clay loam, 2 to 5 percent slopes	0.16	0.89	91.0	0	89	2e
TOTALS		84.77(*)	100%	76.6	-	87.71	2.23

(*) Total acres may differ in the second decimal compared to the sum of each acreage soil. This is due to a round error because we only show the acres of each soil with two decimal.

|  Boundary 2.86 ac

SOIL CODE	SOIL DESCRIPTION	ACRES	%	CSR2	CPI	NCCPI	CAP
570B	Nira silty clay loam, 2 to 5 percent slopes	2.61	90.94	80.0	0	98	2e
222C	Clarinda silty clay loam, 5 to 9 percent slopes	0.2	6.97	42.0	0	74	4w
280	Mahaska silty clay loam, 0 to 2 percent slopes	0.05	1.74	94.0	0	87	1
TOTALS		84.77(*)	100%	77.32	-	95.79	2.12









(*) Total acres may differ in the second decimal compared to the sum of each acreage soil. This is due to a round error because we only show the acres of each soil with two decimal.

Capability Legend

Increased Limitations and Hazards

Decreased Adaptability and Freedom of Choice Users

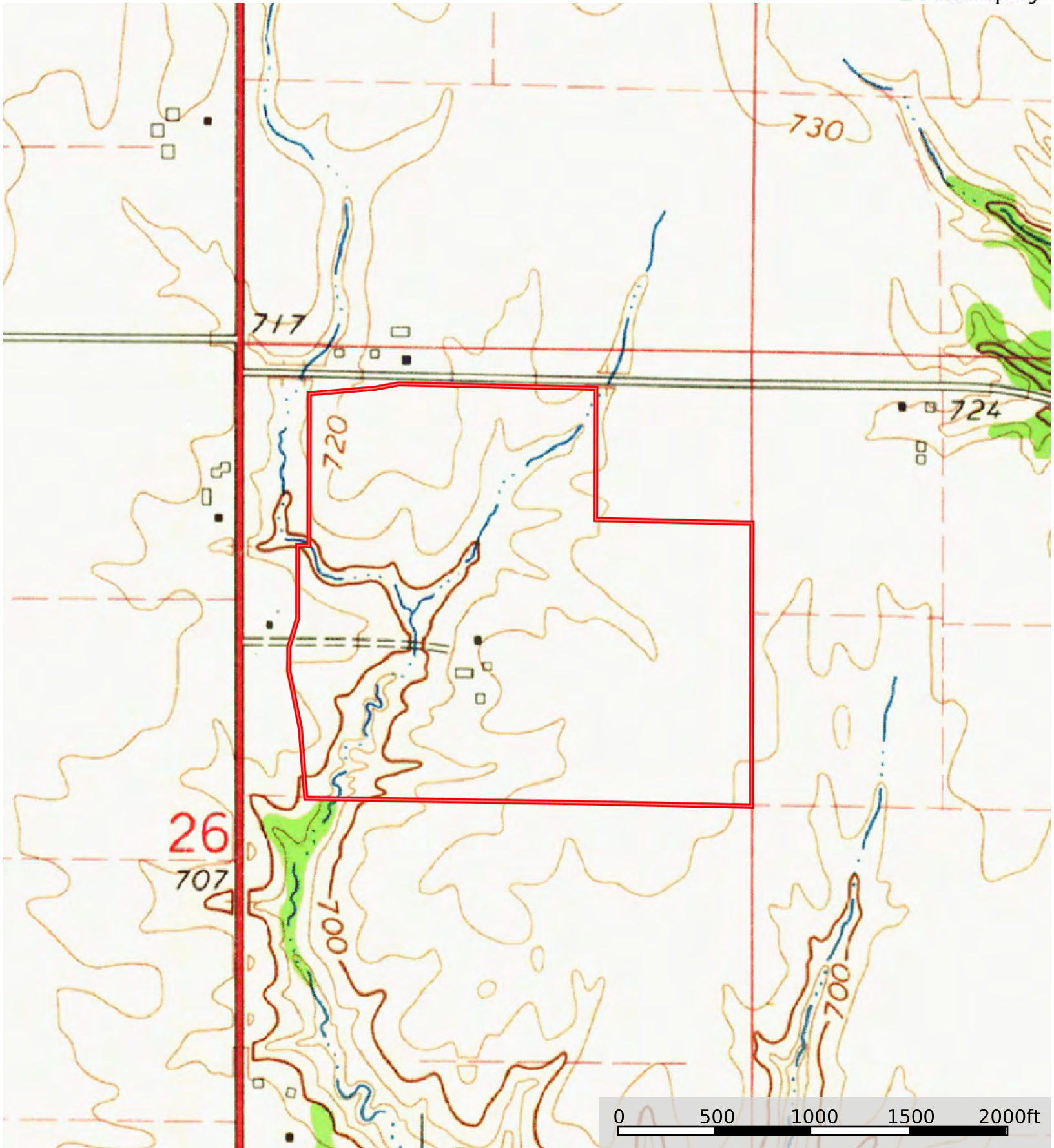
Land, Capability

								
	1	2	3	4	5	6	7	8
'Wild Life'	•	•	•	•	•	•	•	•
Forestry	•	•	•	•	•	•	•	
Limited	•	•	•	•	•	•	•	
Moderate	•	•	•	•	•	•		
Intense	•	•	•	•	•			
Limited	•	•	•	•				
Moderate	•	•	•					
Intense	•	•						
Very Intense	•							

Grazing Cultivation

(c) climatic limitations (e) susceptibility to erosion

(s) soil limitations within the rooting zone (w) excess of water



 Boundary