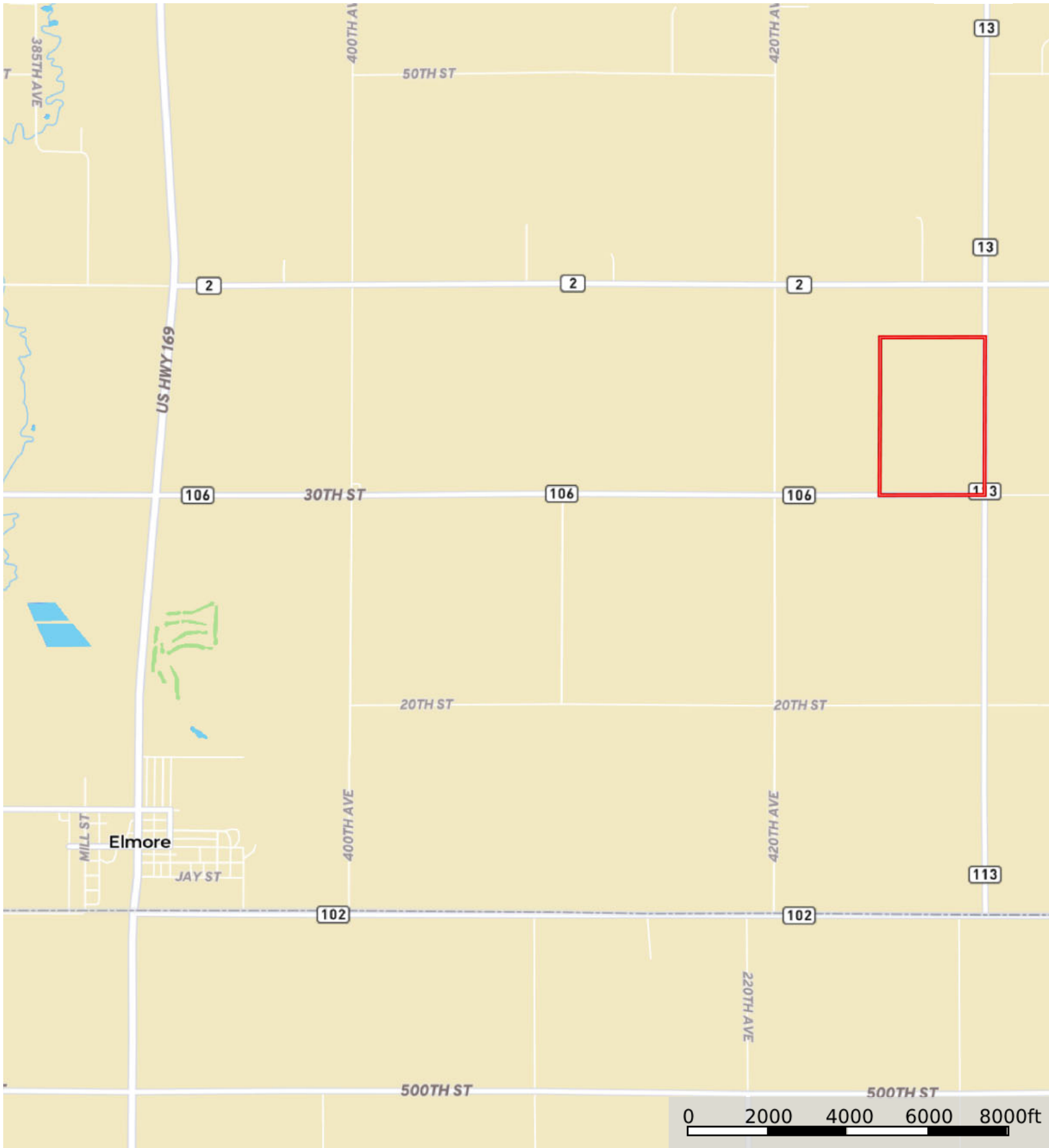

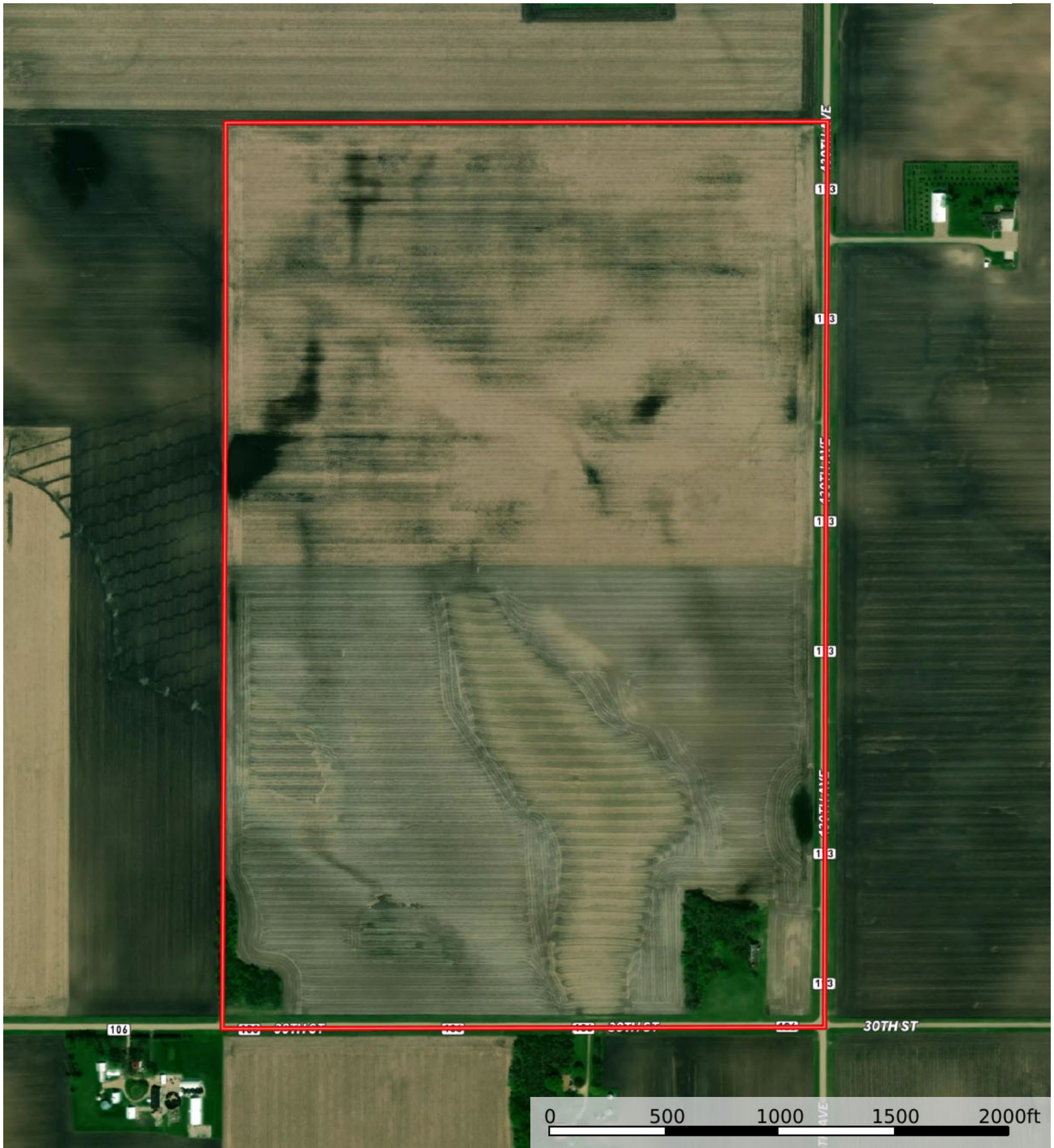



A-19345
Faribault County, Minnesota, 240 AC +/-



 Boundary


A-19345
Faribault County, Minnesota, 240 AC +/-



 Boundary

A-19345
Faribault County, Minnesota, 240 AC +/-



 Boundary

|  Boundary 237.71 ac

SOIL CODE	SOIL DESCRIPTION	ACRES	%	CPI	NCCPI	CAP
229	Waldorf silty clay loam, 0 to 2 percent slopes	51.07	21.48	85	69	2w
1877	Fostoria loam	50.2	21.12	100	84	1
110	Marna silty clay loam, 0 to 2 percent slopes	24.55	10.33	87	77	2w
140	Spicer silty clay loam, 0 to 2 percent slopes	22.77	9.58	91	88	2w
134	Okoboji silty clay loam, 0 to 1 percent slopes	19.2	8.08	86	75	3w
275B	Ocheyedan loam, 2 to 6 percent slopes	13.59	5.72	93	78	2e
86	Canisteo clay loam, 0 to 2 percent slopes	12.65	5.32	93	82	2w
96A	Collinwood silty clay loam, 1 to 3 percent slopes	12.65	5.32	86	70	2w
539	Klossner muck, lake plain, depressional, 0 to 1 percent slopes	8.78	3.69	77	82	3w
920B	Clarion-Estherville complex, 2 to 6 percent slopes	8.72	3.67	76	66	2e
84	Brownston silty clay loam, 0 to 2 percent slopes	7.38	3.1	81	64	2w
197	Kingston silty clay loam, 1 to 3 percent slopes	6.15	2.59	100	91	1
TOTALS		237.7 1(*)	100%	89.6	77.34	1.88









(*) Total acres may differ in the second decimal compared to the sum of each acreage soil. This is due to a round error because we only show the acres of each soil with two decimal.

Capability Legend

Increased Limitations and Hazards

Decreased Adaptability and Freedom of Choice Users

Land, Capability

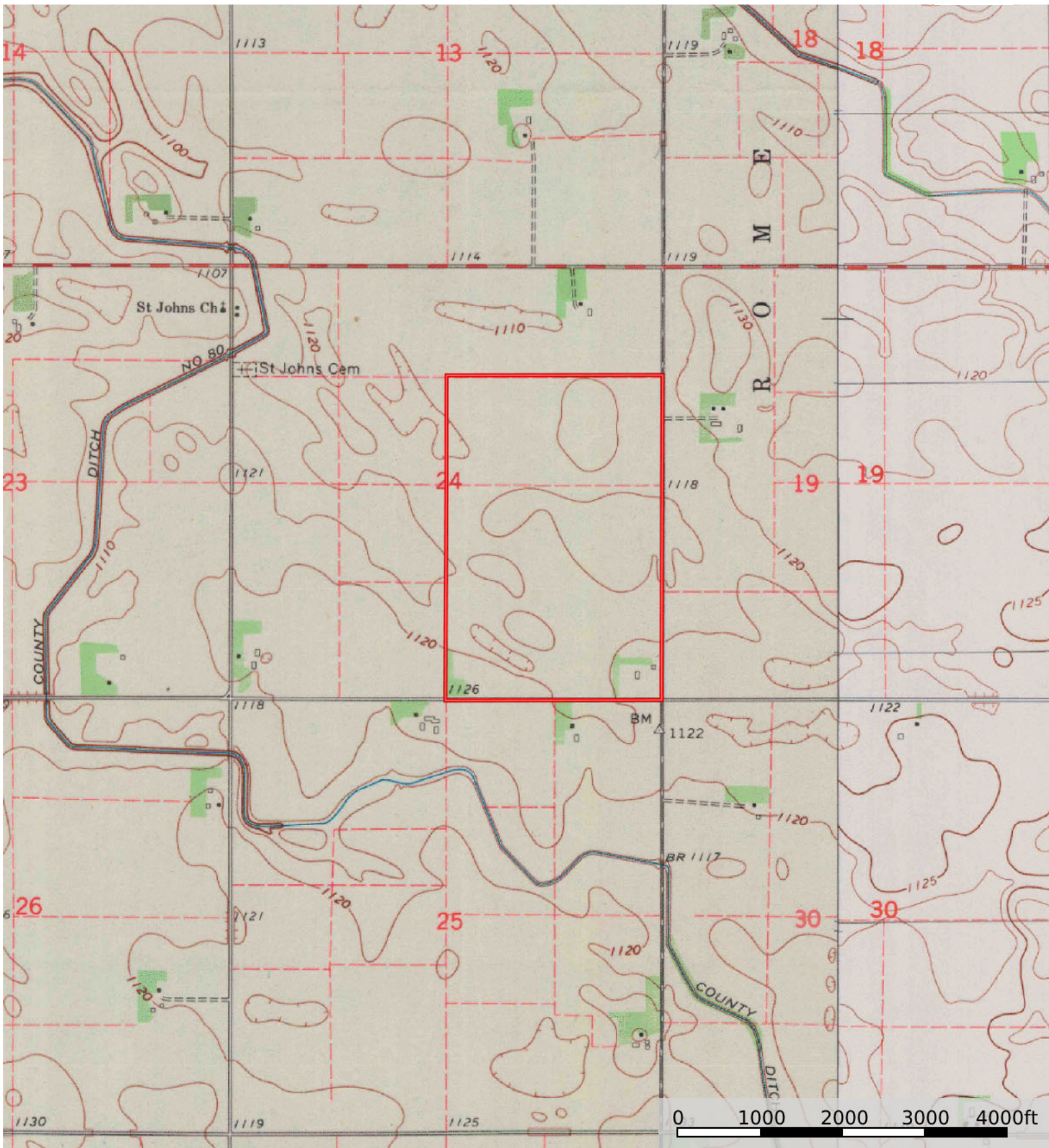
								
	1	2	3	4	5	6	7	8
'Wild Life'	•	•	•	•	•	•	•	•
Forestry	•	•	•	•	•	•	•	
Limited	•	•	•	•	•	•	•	
Moderate	•	•	•	•	•	•		
Intense	•	•	•	•	•			
Limited	•	•	•	•				
Moderate	•	•	•					
Intense	•	•						
Very Intense	•							


Grazing Cultivation

(c) climatic limitations (e) susceptibility to erosion

(s) soil limitations within the rooting zone (w) excess of water

A-19345
Faribault County, Minnesota, 240 AC +/-



 Boundary