
 Boundary



 Boundary



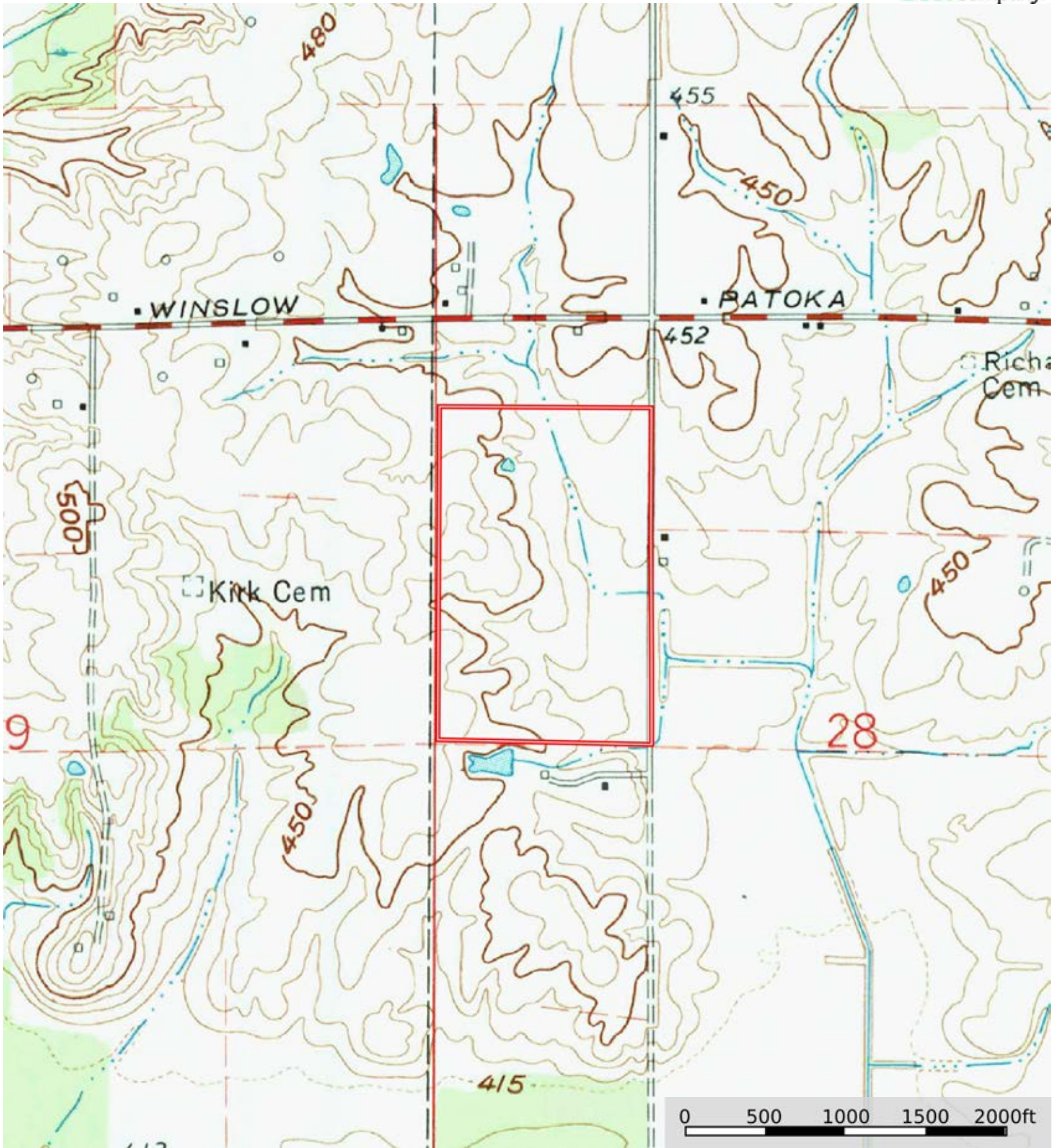
 Boundary


|  Boundary 63.93 ac

SOIL CODE	SOIL DESCRIPTION	ACRES	%	CPI	NCCPI	CAP
Wa	Wakeland silt loam, 0 to 2 percent slopes, frequently flooded	19.86	31.07	0	79	3w
HoC3	Hosmer silt loam, 5 to 10 percent slopes, severely eroded	18.97	29.67	0	55	4e
AIB2	Alford silt loam, 2 to 5 percent slopes, eroded	9.22	14.42	0	75	2e
MuB2	Muren silt loam, 2 to 6 percent slopes, eroded	7.32	11.45	0	83	2e
HoB2	Hosmer silt loam, 2 to 5 percent slopes, eroded	3.18	4.97	0	56	2e
AIB3	Alford silt loam, 2 to 5 percent slopes, severely eroded	2.26	3.54	0	70	3e
AIC3	Alford silt loam, 5 to 10 percent slopes, severely eroded	2.07	3.24	0	69	4e
Bd	Birds silt loam, 0 to 2 percent slopes, frequently flooded	1.05	1.64	0	77	3w
TOTALS		63.93(*)	100%	-	69.94	3.02

(*) Total acres may differ in the second decimal compared to the sum of each acreage soil. This is due to a round error because we only show the acres of each soil with two decimal.





 Boundary