



SCAN THE QR CODE
FOR MORE INFO!



ONLINE AUCTION

155.71± Acres, Rooks County, Kansas

Bidding starts | Tuesday, May 26, 2026, at 8:00 AM

Bidding closes | Friday, May 29, 2026, at 1:00 PM

To register and bid go to: www.fncbid.com

Highlights:

- Highly productive cropland with years of good stewardship
- Easy access
- Recreational opportunities



For additional information, please contact:
Monty Smith, AFM, Broker | (785) 623-6701
MSmith@FarmersNational.com



Derek Freel, Agent | (785) 407-0453
DFreel@FarmersNational.com

Property Information

Property Location:

Travel West of Stockton, KS 9 miles on HWY 24 to 9 Rd. Take 9 Rd North 5 miles until you hit F Road. The property will be located on your left hand side.

Legal Description:

(155.71 +/-) NORTHEAST 1/4 OF SECTION 32, TOWNSHIP 6 SOUTH, RANGE 19 WEST OF THE 6TH P.M. IN ROOKS COUNTY, KANSAS

Property Description:

Don't miss this opportunity to bid on a productive dryland farm located in Northwest Rooks County. With good access and competitive markets available to sell crops, this property is prime opportunity to grow your investments or increase your crop land portfolio.

Farm Data:

Cropland	139.67 acres
Non-crop	10.49 acres
Total	150.16 acres

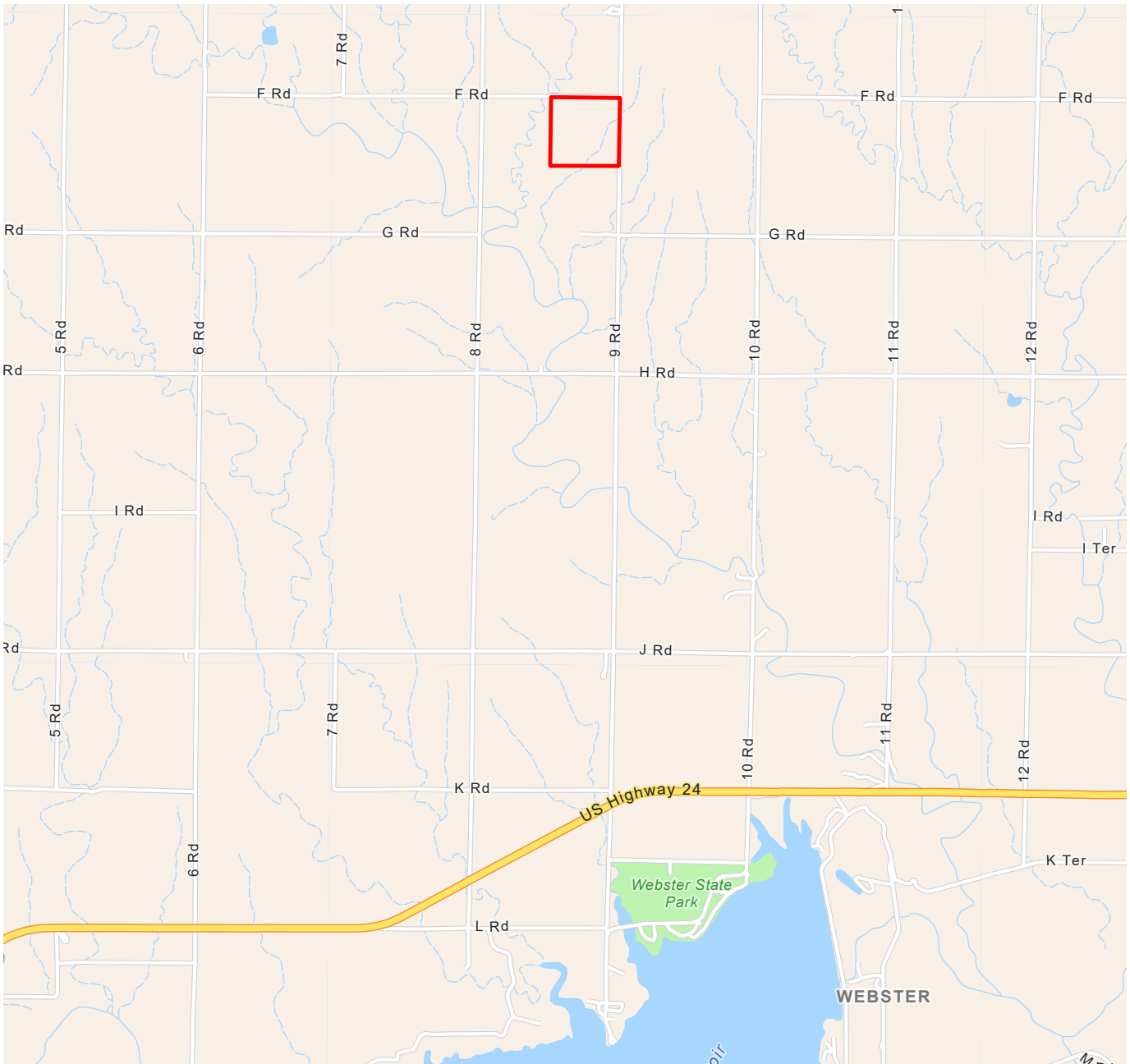
FSA Information:

	Base	Yield
Wheat	29.92 acres	36 bushels
Oats	10.47 acres	38 bushels
Corn	6.20 acres	77 bushels
Grain Sorghum	44.49 acres	88 bushels
Soybeans	55.54 acres	33 bushels
Dry Peas	3.94 acres	1,292 pounds

Taxes:

\$805.84

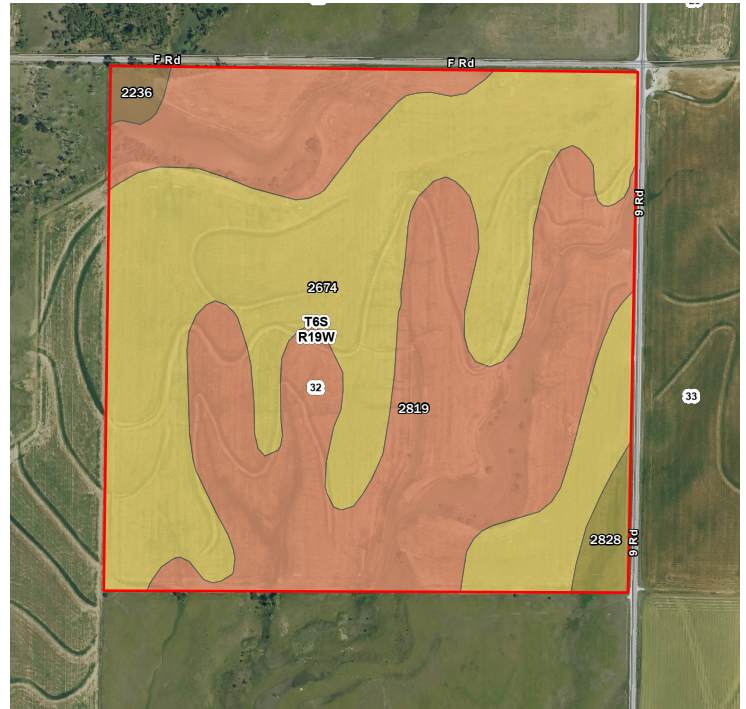
Location Map



Aerial Map



Soil Map



Map Symbol	Name	Non-IRR LCC	IRR LCC	ACRES
2674	Holdrege silt loam, 1 to 3 percent slopes, plains and breaks	2e	2e	76.3
2819	Uly silt loam, 6 to 11 percent slopes	4e	4e	74.6
2828	Uly-Penden complex, 6 to 20 percent slopes	6e	6e	3
2236	Roxbury silt loam, occasionally flooded	2w	2w	1.7
TOTAL				155.6



Online Auction Terms

Minerals: All mineral interests owned by the Seller, if any, will be conveyed to the Buyer(s).

Taxes: Real estate taxes will be prorated to closing.

Conditions: This sale is subject to all easements, covenants, restrictions of record, and leases. Each Bidder is responsible for conducting, at their own risk, their own inspections, inquiries, and due diligence concerning the property. All property is sold on an "AS IS-WHERE IS" basis with no warranties or guarantees, either expressed or implied, by the Seller or Farmers National Company.

Possession: Possession will be granted at closing on June 26, 2026, or such other date agreed to by the parties. Subject to current lease.

Earnest Payment: A 10% earnest money payment is required on the day of the bidding. The payment may be in the form of cashier's check, personal check, company check, or wired funds. All funds will be deposited and held by Coast to Coast Title Company.

Contract and Title: Immediately upon conclusion of the bidding, the high bidder(s) will enter into a real estate contract and deposit with Coast to Coast Title Company the required earnest payment. The cost of title insurance will be paid equally by both the Buyer(s) and the Seller. The cost of any escrow closing services will be paid equally by both the Buyer(s) and the Seller. **Sale is not contingent upon Buyer(s) financing.**

Closing: The sale closing will be on June 26, 2026, or such other date agreed to by the parties. The balance of the purchase price will be payable at closing in guaranteed funds or by wire transfer at the discretion of Coast to Coast Title Company.

Approval of Bids: Final sale is subject to the Seller's approval or rejection.

Agency: Farmers National Company and its representatives are acting as Agents of the Seller.

Announcements: Information provided herein was obtained from sources deemed reliable, but neither Farmers National Company nor the Seller makes any guarantees or warranties as to its accuracy. All potential bidders are urged to inspect the property, its condition, and to rely on their own conclusions. All sketches, dimensions, and acreage figures are approximate or "more or less." Any announcements made auction day by Farmers National Company will take precedence over any previous printed materials or oral statements. Farmers National Company and Seller reserve the right to preclude any person from bidding if there is any question as to the person's credentials or fitness to bid.

Seller(s): Steven Bruggeman

Additional Comments: 2026 crop year cash rent will be prorated at the date of closing. Hunting lease on property. Hunting lease rent will be prorated at the date of closing. Expiration of hunting lease occurs on April 1, 2027

Online Only: The online bidding begins on May 26, 2026, at 8:00 AM. Bidding closes on May 29, 2026 at 1:00 PM.

To register and bid on this auction go to: www.fncbid.com

All bids on the tracts will be visible online, but the identity of bidders is confidential. See auction terms and conditions for minimum bid requirements and details.

Server and Software Technical Issues: In the event there are technical difficulties related to the server, software, or any other online auction-related technologies, Farmers National Company reserves the right to extend bidding, continue the bidding, or close the bidding. Neither the company providing the software nor Farmers National Company shall be held responsible for a missed bid or the failure of the software to function properly for any reason. E-mail notification will be sent to registered bidders with updated information as deemed necessary by Farmers National Company.

Sale Method: All bids are open for advancement starting May 26, 2026 at 8:00 AM until May 29, 2026 at 1:00 PM, subject to the automatic bid extend feature outlined in these terms and conditions. Auctions are timed events and subject to extended bidding due to bidding activity. Any bid placed within 5 minutes of the auction ending will automatically extend the auction for 5 minutes from the time the bid is placed. The auto-extend feature remains active until no further bids are placed within the 5 minutes time frame. All decisions of Farmers National Company are final.

