

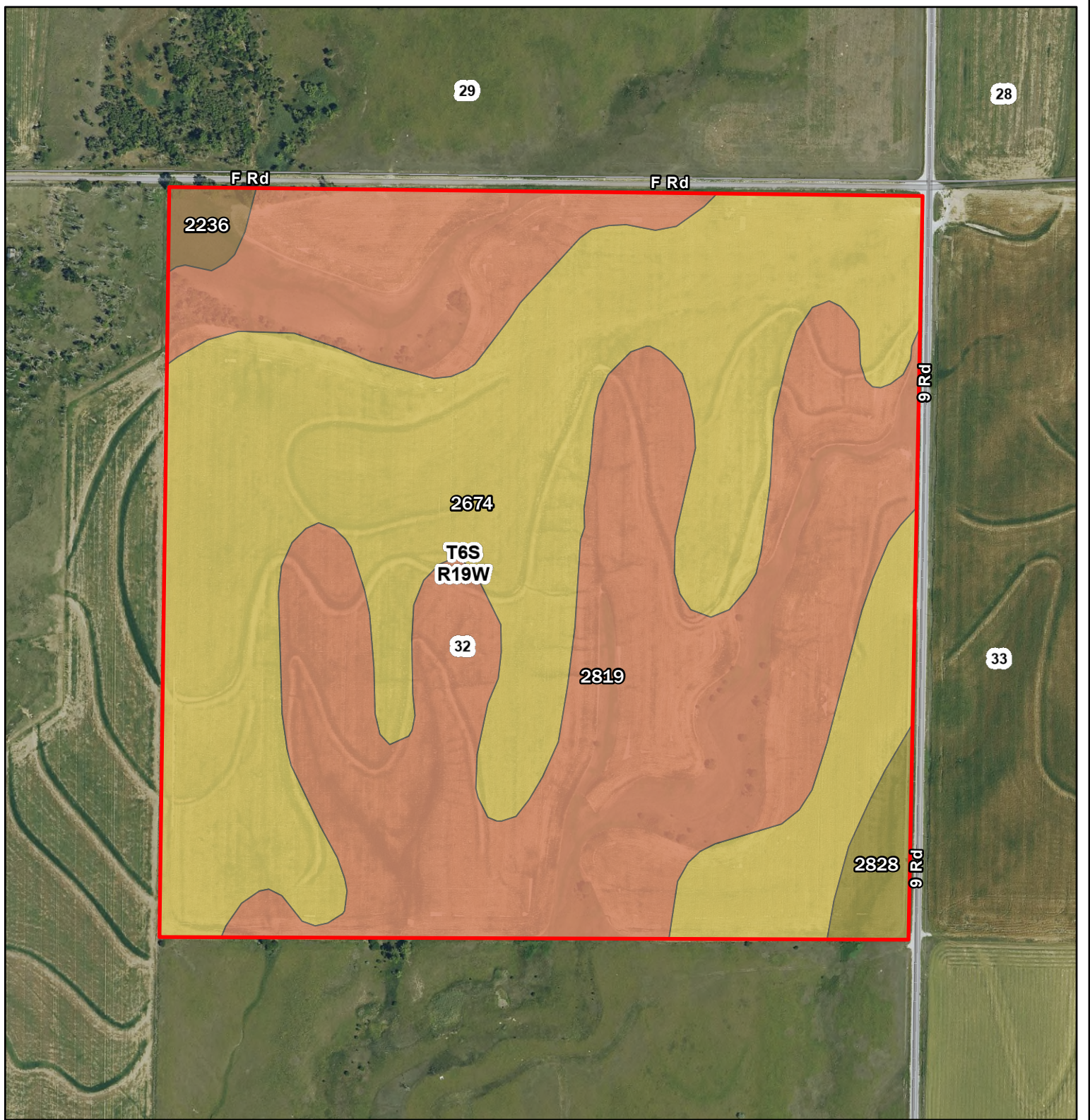
A-19471
Steve Bruggeman
Rooks County, Kansas

Latitude: 39.4345° N
Longitude: 99.46° W
Imagery Source: USDA NAIP
Soil Data Source: USDA NRCS
Boundaries are Approximate



A-19471
Steve Bruggeman
Rooks County, Kansas

Latitude: 39.4919° N
Longitude: 99.4581° W
Imagery Source: USDA NAIP
Soil Data Source: USDA NRCS
Boundaries are Approximate

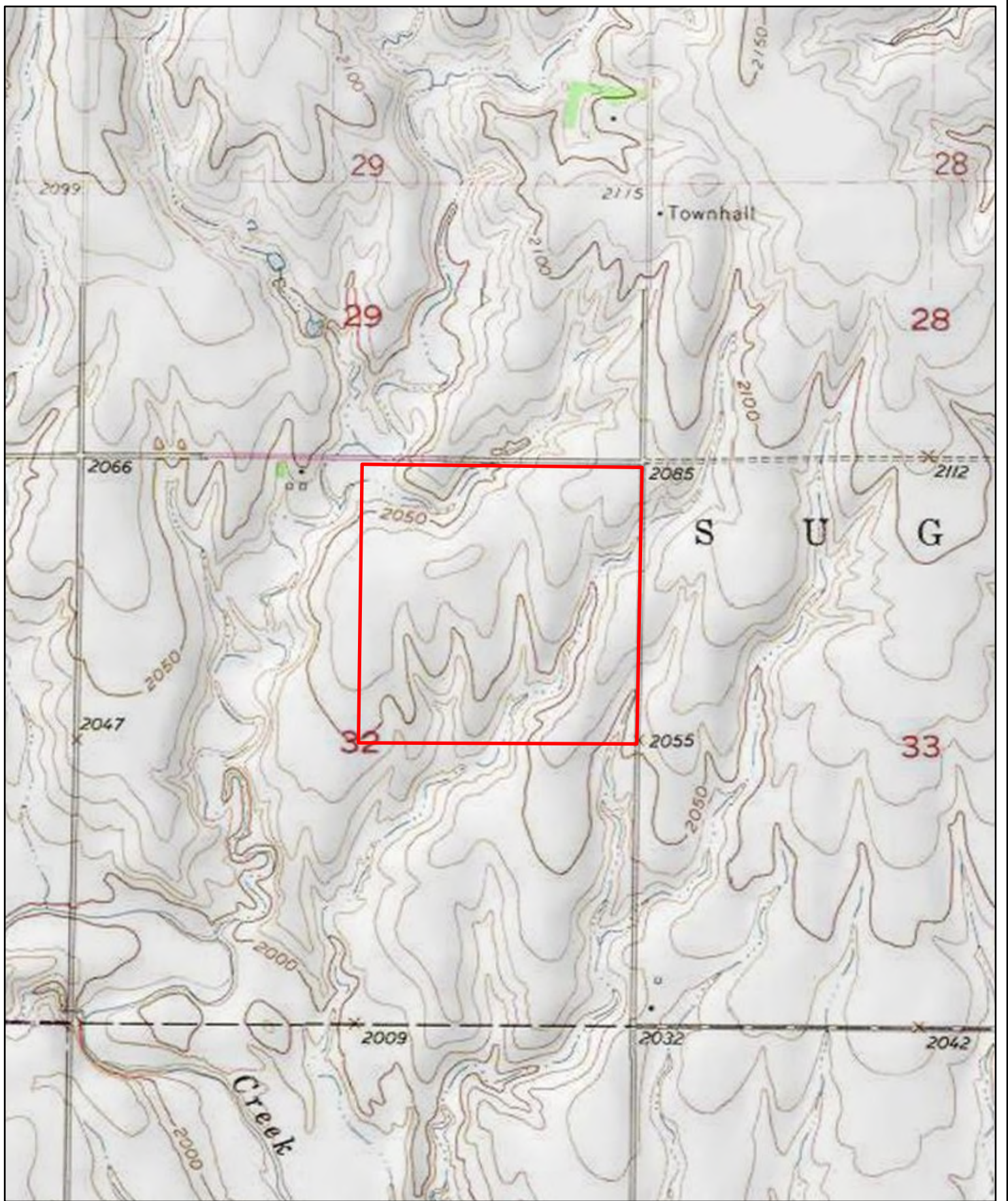


Map Symbol	Name	Non-IRR LCC	IRR LCC	ACRES
2674	Holdrege silt loam, 1 to 3 percent slopes, plains and breaks	2e	2e	76.3
2819	Uly silt loam, 6 to 11 percent slopes	4e	4e	74.6
2828	Uly-Penden complex, 6 to 20 percent slopes	6e	6e	3
2236	Roxbury silt loam, occasionally flooded	2w	2w	1.7
TOTAL				155.6



A-19471
Steve Bruggeman
Rooks County, Kansas

Latitude: 39.4919 ° N
 Longitude: 99.4581 ° W
 Imagery Source: USDA NAIP
 Soil Data Source: USDA NRCS
 Boundaries are Approximate



A-19471
Steve Bruggeman
Rooks County, Kansas

Latitude: 39.4919° N
Longitude: 99.4581° W
Imagery Source: USDA NAIP
Soil Data Source: USDA NRCS
Boundaries are Approximate