


Boundary



 Boundary





 Boundary

 Boundary 66.89 ac

SOIL CODE	SOIL DESCRIPTION	ACRES	%	CSR2	CPI	NCCPI	CAP
284B	Flagler sandy loam, 2 to 5 percent slopes	9.66	14.44	51.0	0	59	3e
626	Hayfield loam, 0 to 2 percent slopes, rarely flooded	7.91	11.83	53.0	0	81	2s
174	Bolan loam, 0 to 2 percent slopes	7.86	11.75	70.0	0	85	2s
198B	Floyd loam, 1 to 4 percent slopes	7.76	11.6	89.0	0	88	2w
83B	Kenyon loam, 2 to 5 percent slopes	7.37	11.02	90.0	0	89	2e
1152	Marshan clay loam, 0 to 2 percent slopes, rarely flooded	6.97	10.42	54.0	0	82	2w
171	Bassett loam, 0 to 2 percent slopes	5.9	8.82	90.0	0	95	1
777	Wapsie loam, 0 to 2 percent slopes	5.27	7.88	51.0	0	69	2s
471	Oran silt loam, 1 to 4 percent slopes	5.03	7.52	74.0	0	80	1
777B	Wapsie loam, 2 to 5 percent slopes	2.99	4.47	47.0	0	68	2e
84	Clyde silty clay loam, 0 to 3 percent slopes	0.17	0.25	88.0	0	91	2w
TOTALS		66.89(*)	100%	67.57	-	79.75	1.98









(\*) Total acres may differ in the second decimal compared to the sum of each acreage soil. This is due to a round error because we only show the acres of each soil with two decimal.

## Capability Legend

Increased Limitations and Hazards

Decreased Adaptability and Freedom of Choice Users

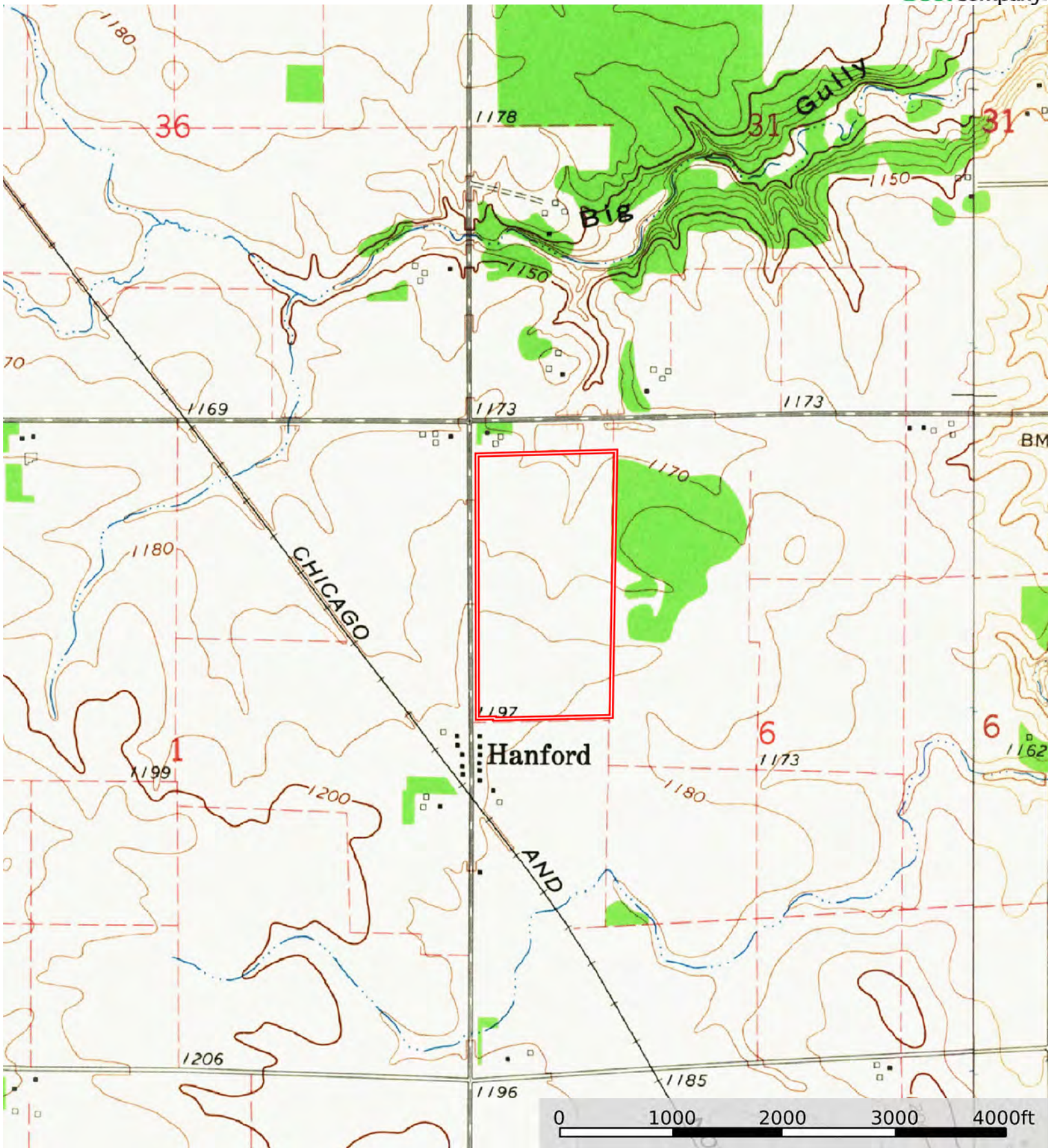
Land, Capability

								
	1	2	3	4	5	6	7	8
'Wild Life'	•	•	•	•	•	•	•	•
Forestry	•	•	•	•	•	•	•	
Limited	•	•	•	•	•	•	•	
Moderate	•	•	•	•	•	•		
Intense	•	•	•	•	•			
Limited	•	•	•	•				
Moderate	•	•	•					
Intense	•	•						
Very Intense	•							

### Grazing Cultivation

(c) climatic limitations (e) susceptibility to erosion

(s) soil limitations within the rooting zone (w) excess of water



 Boundary