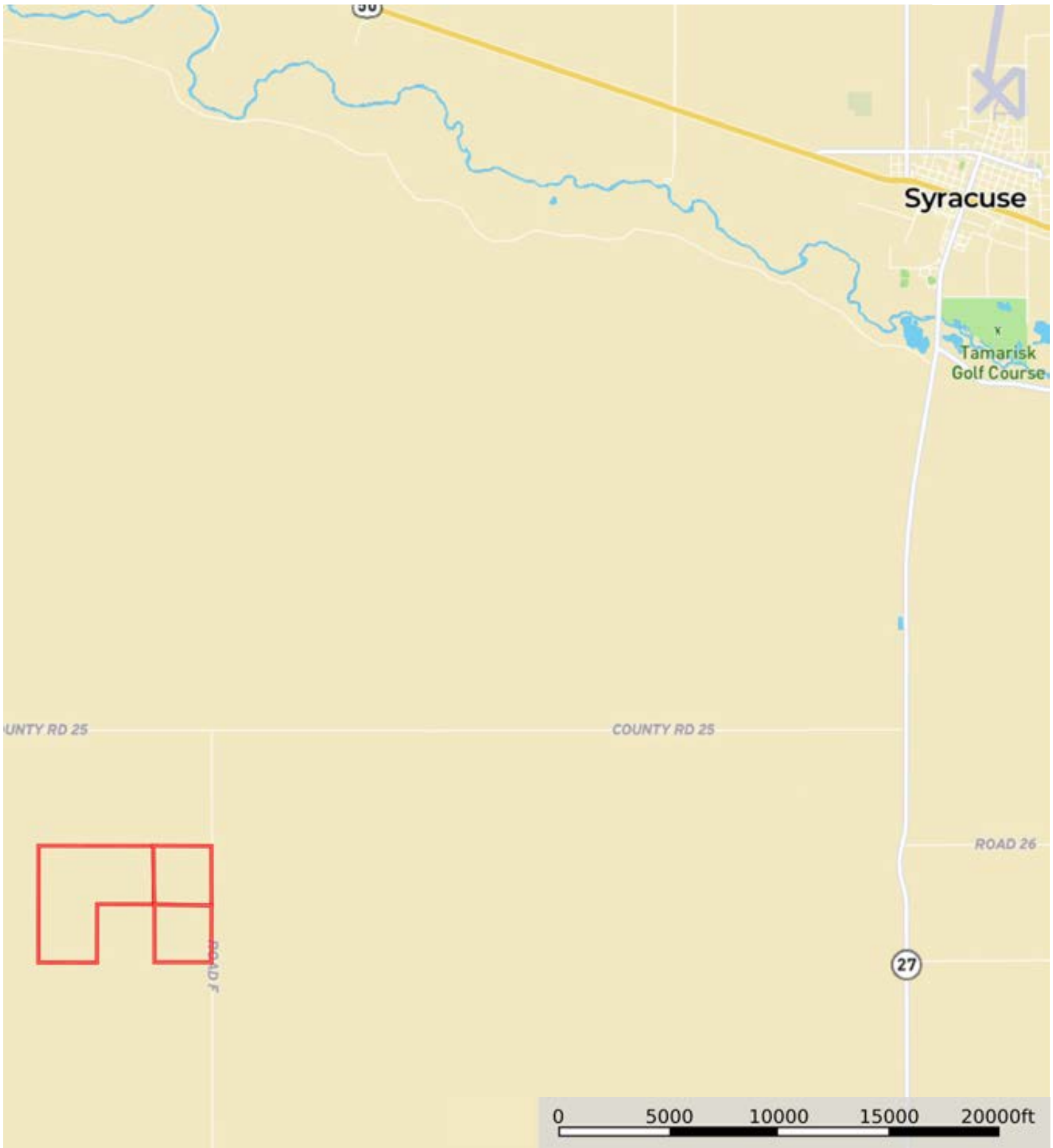
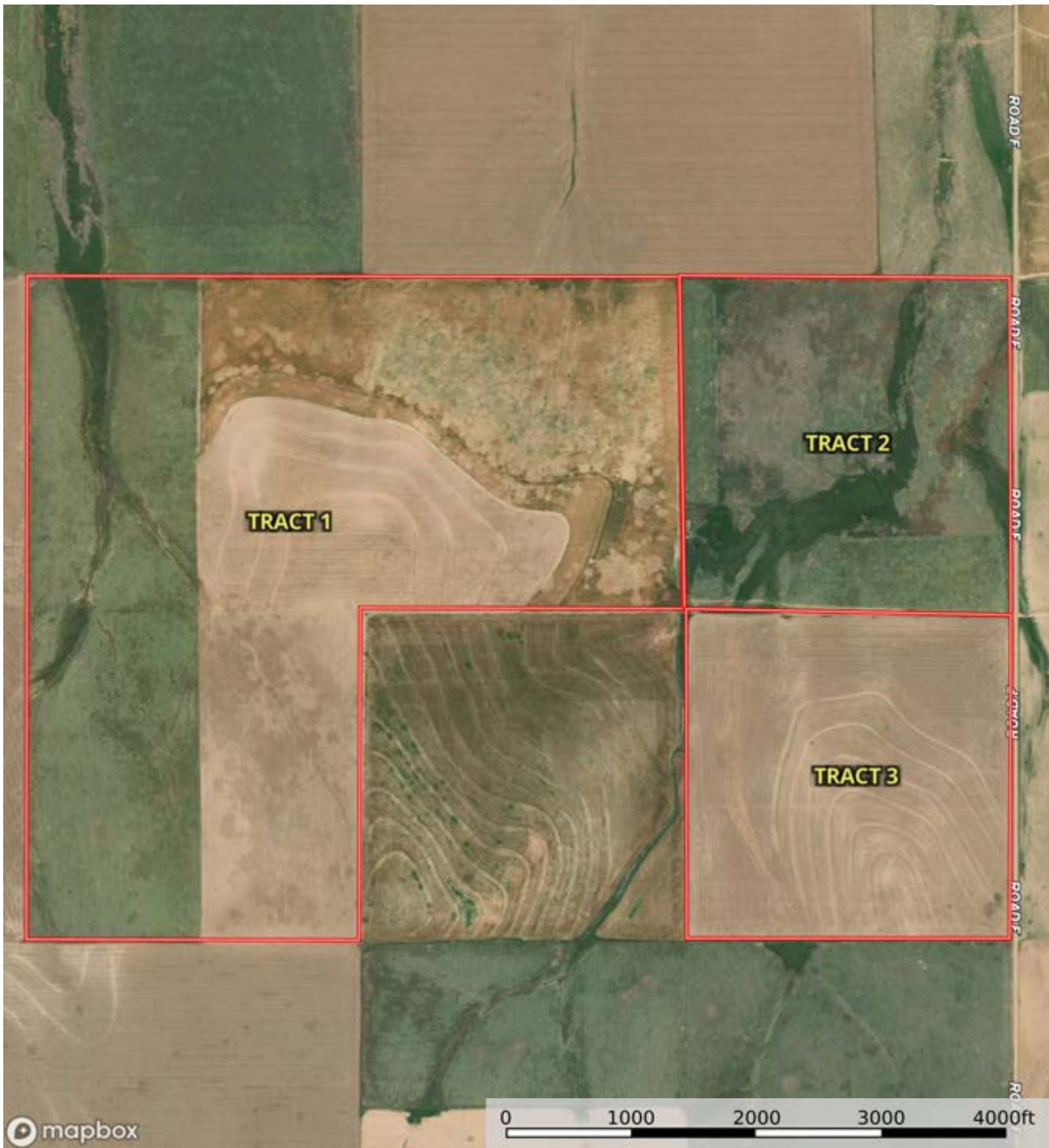


A-19975
Hamilton County, Kansas, 801 AC +/-



 Boundary



 Boundary



 Boundary

|  Boundary 484.12 ac

SOIL CODE	SOIL DESCRIPTION	ACRES	%	CPI	NCCPI	CAP
1854	Ulysses loam, 1 to 3 percent slopes	283.8 1	58.62	0	62	3e
1578	Colby silt loam, 1 to 3 percent slopes	113.4 9	23.44	0	55	4c
1579	Colby silt loam, 3 to 6 percent slopes	68.69	14.19	0	53	4e
1853	Ulysses loam, 0 to 1 percent slopes	12.36	2.55	0	49	3c
1668	Manter fine sandy loam, 1 to 3 percent slopes	4.38	0.9	0	43	3e
1761	Richfield silt loam, 0 to 1 percent slopes	1.39	0.29	0	66	3c
TOTALS		484.1 2(*)	100%	-	58.59	3.38

(*) Total acres may differ in the second decimal compared to the sum of each acreage soil. This is due to a round error because we only show the acres of each soil with two decimal.





 Boundary

|  Boundary 162.7 ac

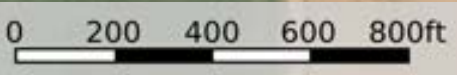
SOIL CODE	SOIL DESCRIPTION	ACRES	%	CPI	NCCPI	CAP
1854	Ulysses loam, 1 to 3 percent slopes	70.54	43.36	0	62	3e
1580	Colby silt loam, 6 to 15 percent slopes	54.83	33.7	0	48	6e
1578	Colby silt loam, 1 to 3 percent slopes	25.94	15.94	0	55	4c
9999	Water	6.68	4.11	0	-	-
1579	Colby silt loam, 3 to 6 percent slopes	3.59	2.21	0	53	4e
1422	Goshen silt loam, rarely flooded	1.12	0.69	0	56	3c
TOTALS		162.7(*)	100%	-	53.38	4.24

(*) Total acres may differ in the second decimal compared to the sum of each acreage soil. This is due to a round error because we only show the acres of each soil with two decimal.





 Boundary

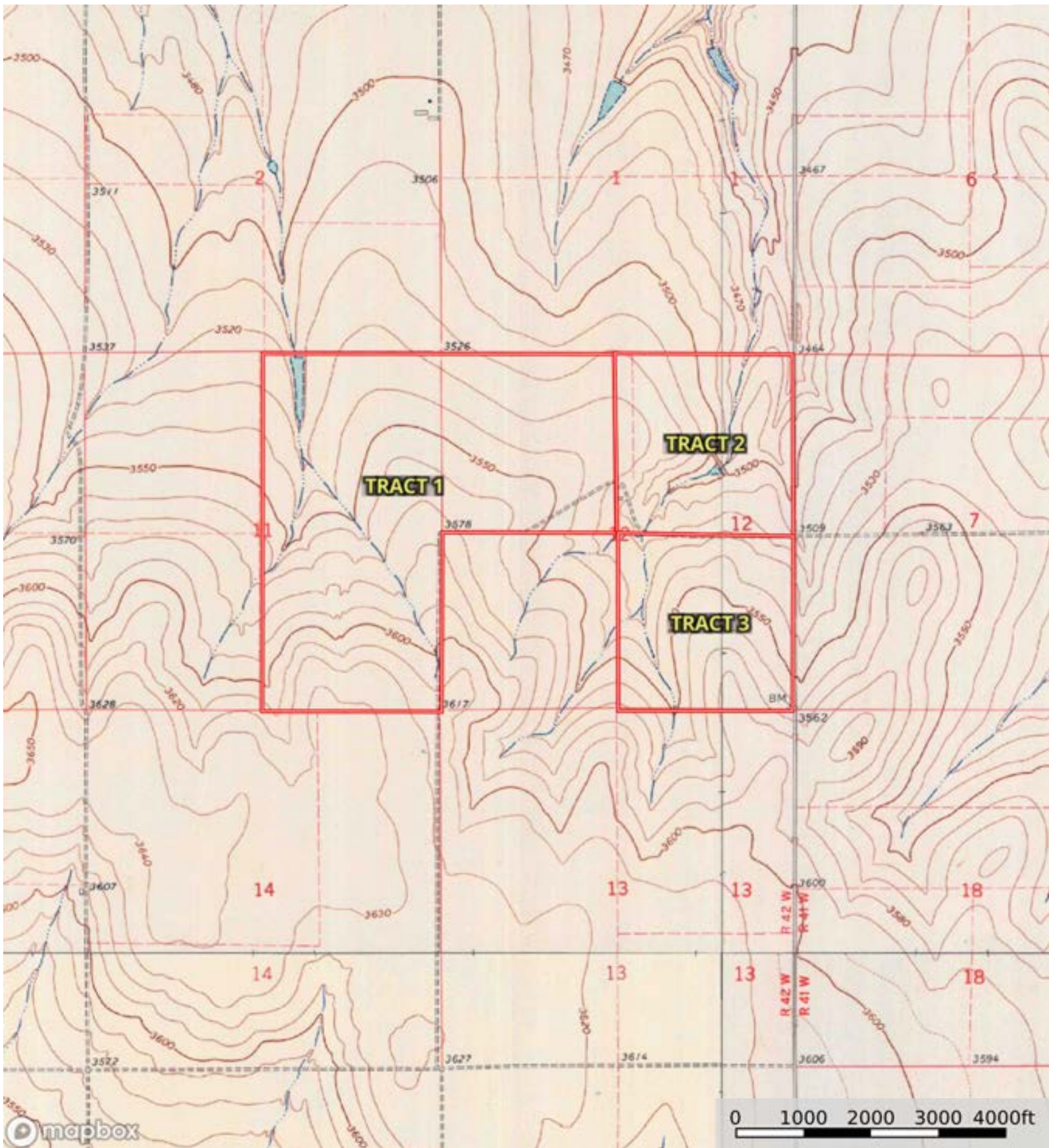


|  Boundary 156.41 ac

SOIL CODE	SOIL DESCRIPTION	ACRES	%	CPI	NCCPI	CAP
1854	Ulysses loam, 1 to 3 percent slopes	59.58	38.09	0	62	3e
1579	Colby silt loam, 3 to 6 percent slopes	53.64	34.29	0	53	4e
1578	Colby silt loam, 1 to 3 percent slopes	27.96	17.88	0	55	4c
1422	Goshen silt loam, rarely flooded	13.58	8.68	0	56	3c
1580	Colby silt loam, 6 to 15 percent slopes	1.65	1.05	0	48	6e
TOTALS		156.4 1(*)	100%	-	56.99	3.55

(*) Total acres may differ in the second decimal compared to the sum of each acreage soil. This is due to a round error because we only show the acres of each soil with two decimal.





Boundary