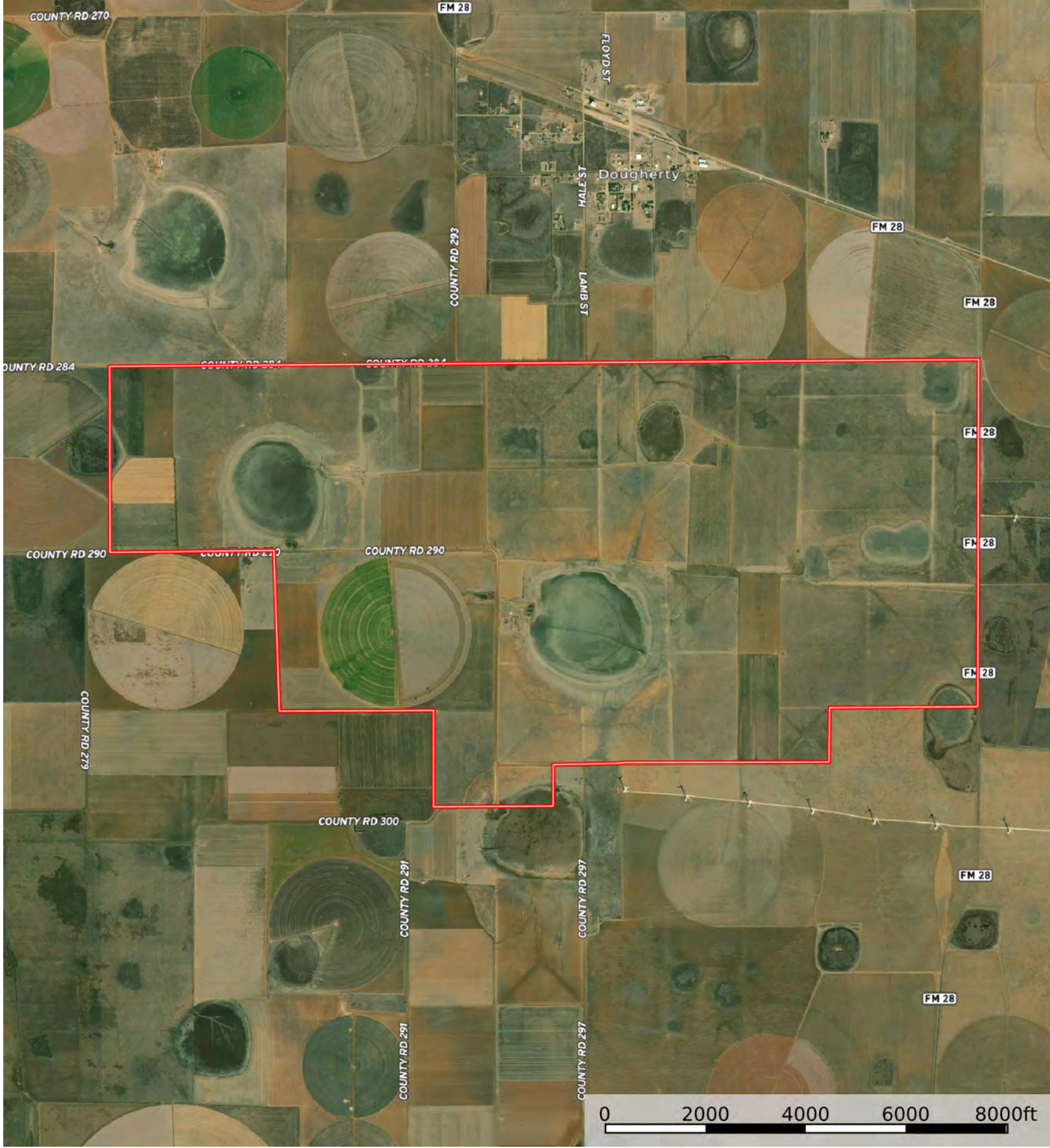
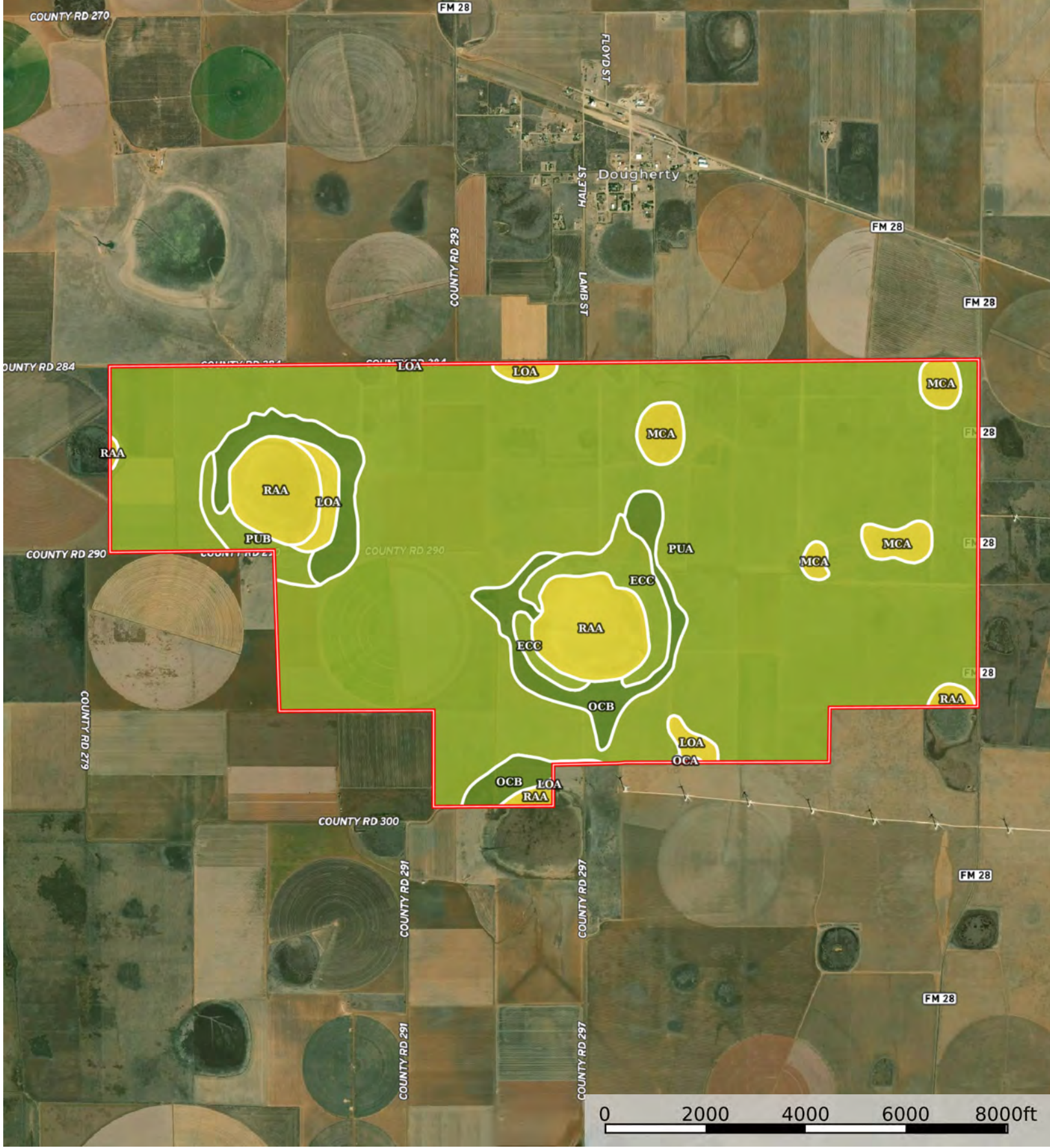


 Boundary



 Boundary



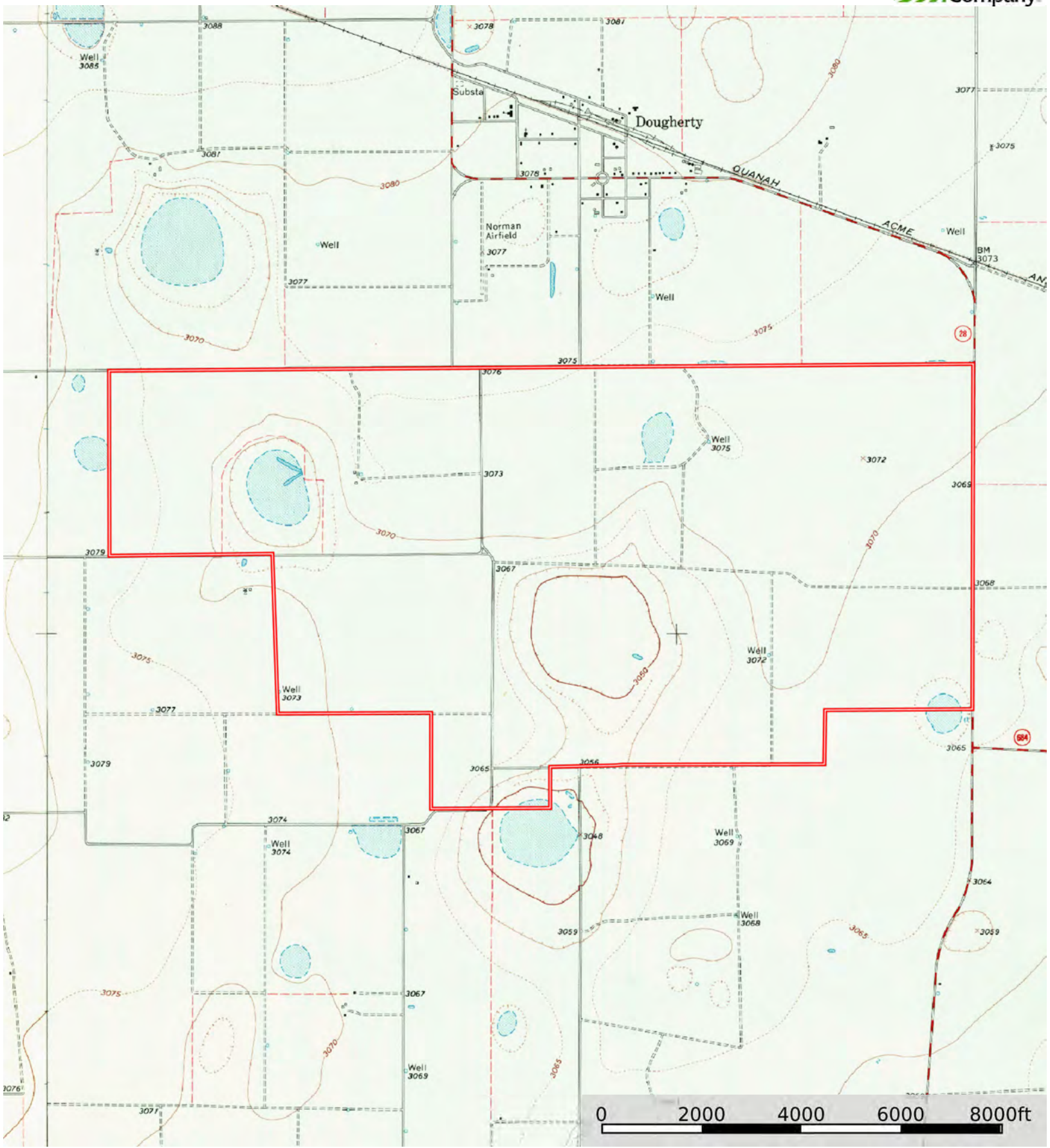
 Boundary

Boundary 2747.52 ac

SOIL CODE	SOIL DESCRIPTION	ACRES	%	CPI	NCCPI	CAP
PuA	Pullman clay loam, 0 to 1 percent slopes	2172.08	79.05	0	46	3s
OcB	Olton clay loam, 1 to 3 percent slopes	182.2	6.63	0	46	2e
RaA	Randall clay, 0 to 1 percent slopes, frequently ponded	178.78	6.51	0	17	5w
EcC	Estacado clay loam, 3 to 5 percent slopes	73.83	2.69	0	48	3e
McA	McLean clay, 0 to 1 percent slopes, occasionally ponded	64.29	2.34	0	24	5w
LoA	Lofton clay loam, 0 to 1 percent slopes, occasionally ponded	41.3	1.5	0	34	5w
PuB	Pullman clay loam, 1 to 3 percent slopes	33.87	1.23	0	46	3s
OcA	Olton clay loam, 0 to 1 percent slopes	1.17	0.04	0	46	2c
TOTALS		2747.52(*)	100%	-	43.47	3.14

(*) Total acres may differ in the second decimal compared to the sum of each acreage soil. This is due to a round error because we only show the acres of each soil with two decimal.





 Boundary