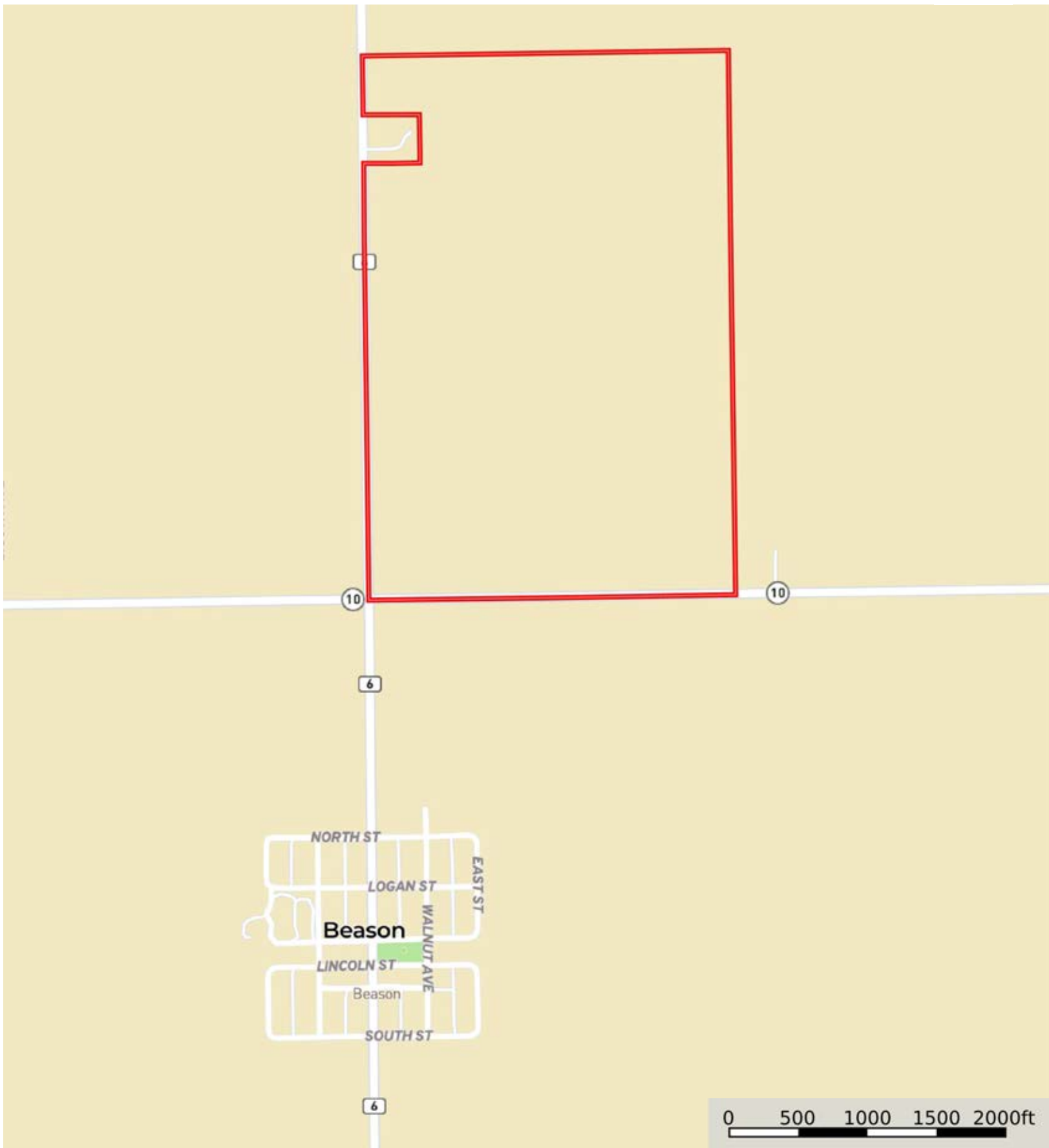


A-20382

Logan County, Illinois, 236.98 AC +/-




 Boundary

A-20382

Logan County, Illinois, 236.98 AC +/-



 Boundary



The information contained herein was obtained from sources deemed to be reliable. Land id™ Services makes no warranties or guarantees as to the completeness or accuracy thereof.



 Boundary

|  Boundary 236.39 ac

SOIL CODE	SOIL DESCRIPTION	ACRES	%	PI	NCCPI	CAP
68A	Sable silty clay loam, 0 to 2 percent slopes	112.05	47.4	143	83	2w
43A	Ipava silt loam, 0 to 2 percent slopes	57.65	24.39	142	91	1
737A	Tama silt loam, very deep to sand, 0 to 2 percent slopes	28.89	12.22	139	88	1
737B	Tama silt loam, very deep to sand, 2 to 5 percent slopes	13.16	5.57	138	88	2e
748B	Plano silt loam, sandy substratum, 2 to 5 percent slopes	8.03	3.4	141	84	2e
198A	Elburn silt loam, 0 to 2 percent slopes	6.96	2.94	143	91	1
159B	Pillot silt loam, 2 to 5 percent slopes	2.95	1.25	119	91	2e
748A	Plano silt loam, sandy substratum, 0 to 2 percent slopes	2.62	1.11	142	86	1
726A	Elburn silt loam, sandy substratum, 0 to 2 percent slopes	2.22	0.94	143	96	1
272A	Edgington silt loam, 0 to 2 percent slopes	1.86	0.79	124	86	2w
TOTALS		236.39(*)	100%	141.46	86.39	1.58









(\*) Total acres may differ in the second decimal compared to the sum of each acreage soil. This is due to a round error because we only show the acres of each soil with two decimal.

## Capability Legend

Increased Limitations and Hazards

Decreased Adaptability and Freedom of Choice Users

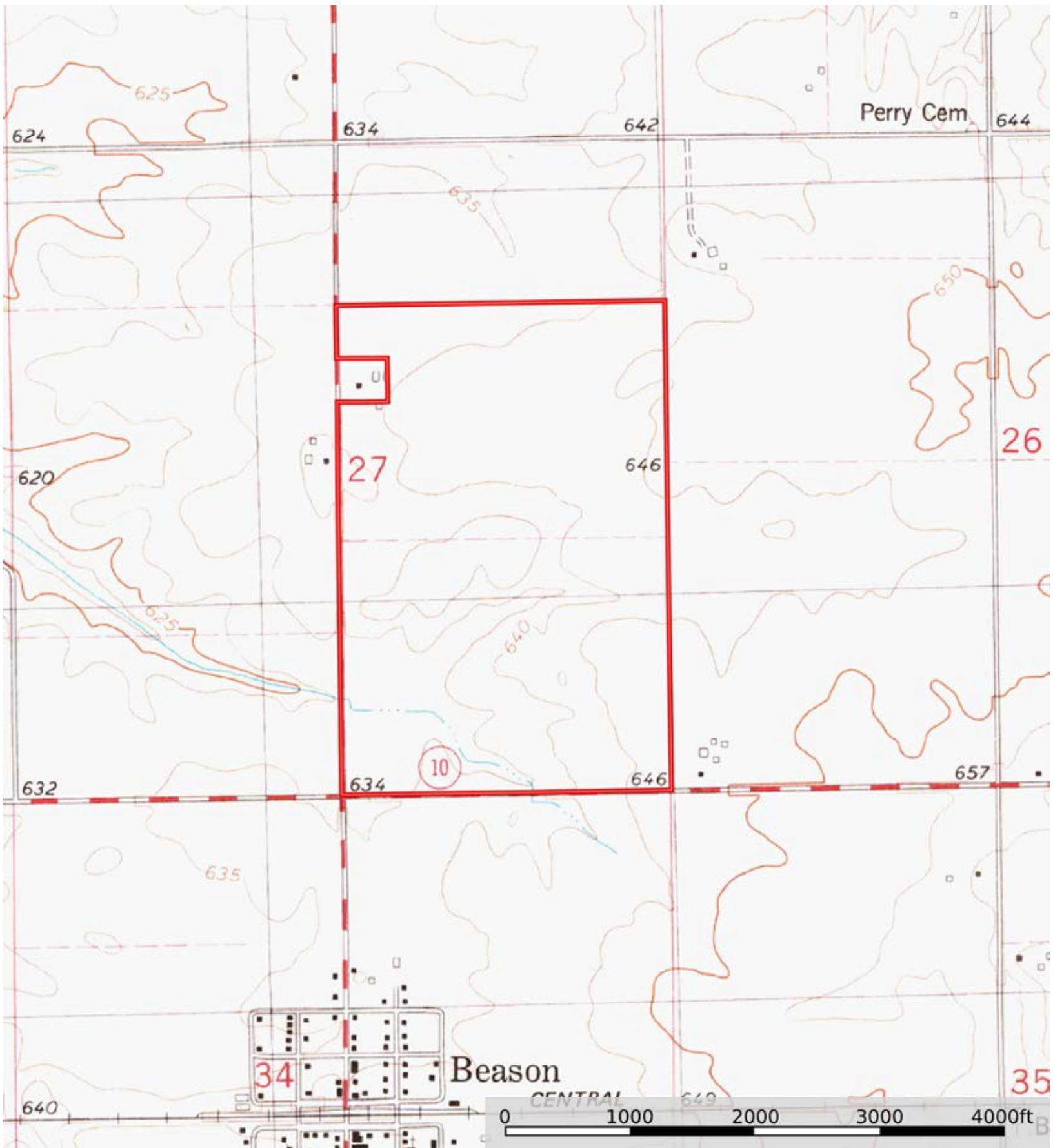
Land, Capability


								
	1	2	3	4	5	6	7	8
'Wild Life'	•	•	•	•	•	•	•	•
Forestry	•	•	•	•	•	•	•	
Limited	•	•	•	•	•	•	•	
Moderate	•	•	•	•	•	•		
Intense	•	•	•	•	•			
Limited	•	•	•	•				
Moderate	•	•	•					
Intense	•	•						
Very Intense	•							

### Grazing Cultivation

(c) climatic limitations (e) susceptibility to erosion

(s) soil limitations within the rooting zone (w) excess of water



 Boundary