

# LAND FOR SALE

**100± Acres, Limestone County, Texas  
Offered at \$790,000**

## Highlights:

- Future rural/recreational and rural/residential sites
- Stock pond located on the property
- Paved road frontage
- Native rangeland
- Plenty of cover for wildlife



A-20440

**Legal Description:** A356, J.G. Miner, ACRES 100, Limestone County, Texas



**Farmers  
National  
Company™**

Serving America's Landowners Since 1929

[www.FarmersNational.com](http://www.FarmersNational.com)



**For additional information, please contact:**

**Austin VanHooser, Agent**  
Fort Worth, Texas  
Business: (817) 884-4709  
Cell: (817) 980-3424

[AVanHooser@FarmersNational.com](mailto:AVanHooser@FarmersNational.com)

[www.FarmersNational.com/AustinVanHooser](http://www.FarmersNational.com/AustinVanHooser)



Real Estate Sales • Auctions • Farm and Ranch Management • Appraisals • Insurance • Consultations  
Oil and Gas Management • Forest Resource Management • National Hunting Leases • FNC Ag Stock

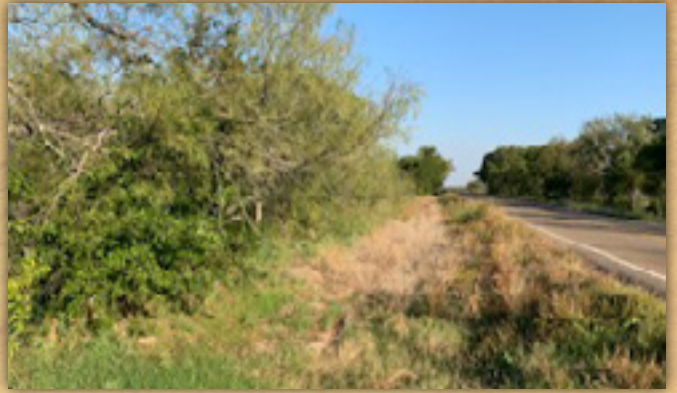
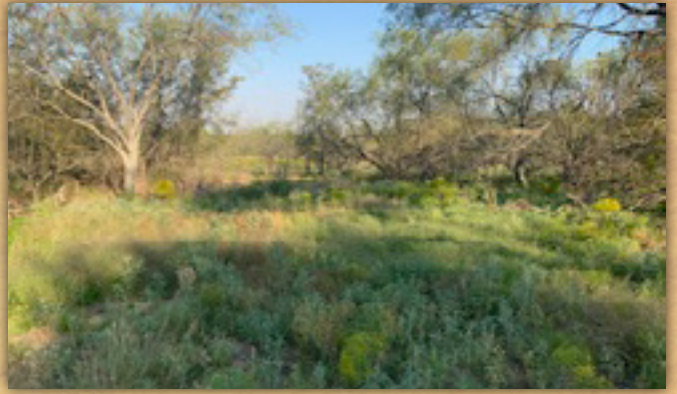
# Property Information

**Property Location:** West, then south on FM-638. Approximately four miles northeast of Coolidge, Limestone County, Texas 76690.

## Farm Data:

Pasture	<u>100.00 acres</u>
Total	100.00 acres

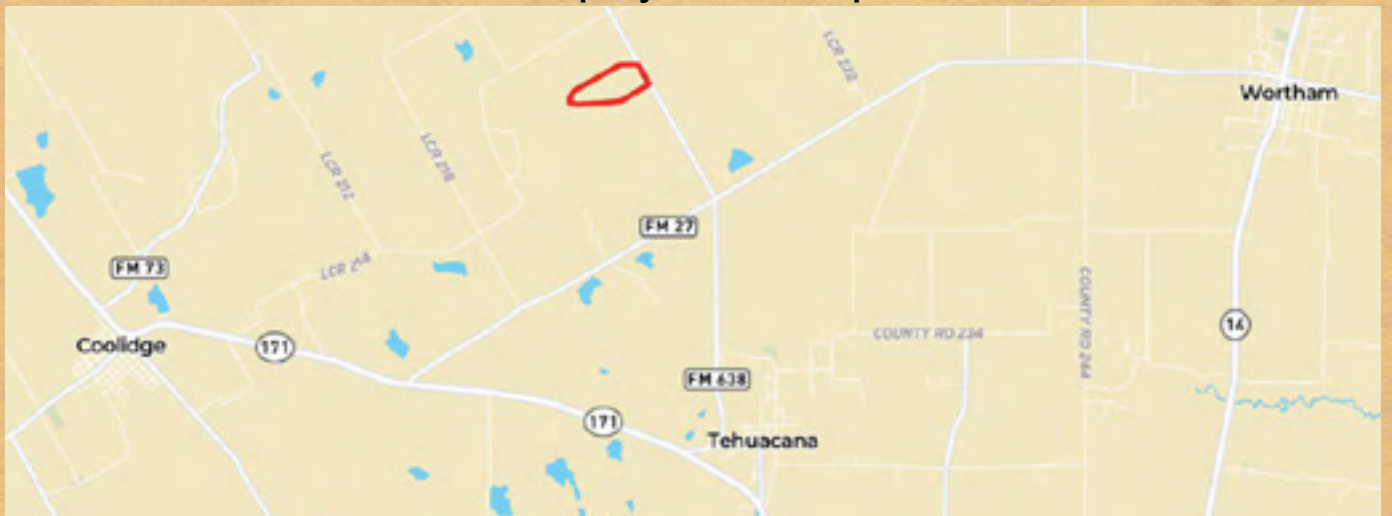
**Taxes:** \$57.66



**Aerial Map**



**Property Location Map**



Information provided was obtained from sources deemed reliable, however, the broker makes no guarantees as to its accuracy. All prospective buyers are urged to inspect the property, its title, and to rely on their own conclusions. Seller reserves the right to refuse any or all offers submitted and may withdraw the property from offering without notice. Farmers National Company and its representatives are the designated agents for the seller.