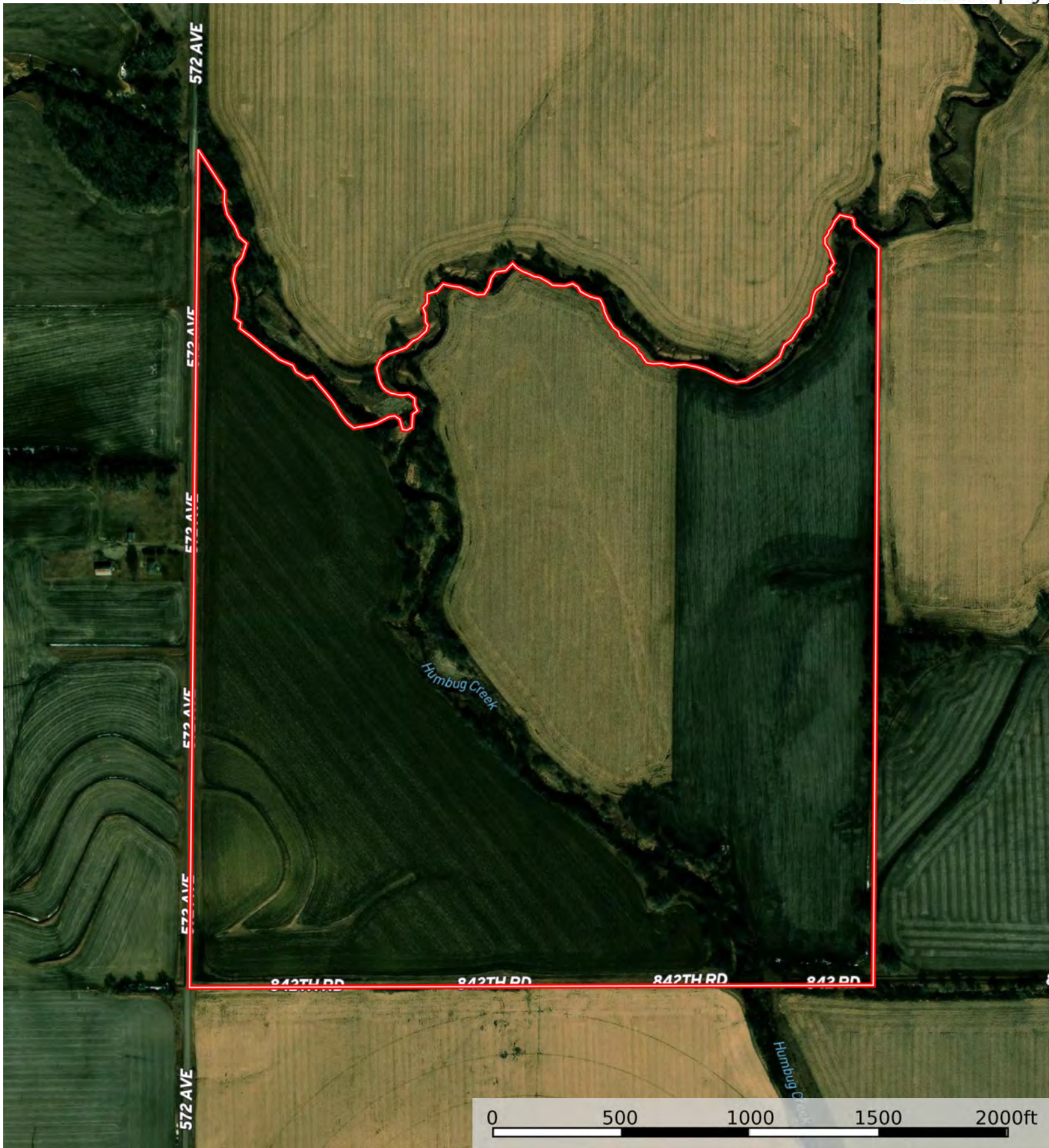




Boundary





Boundary



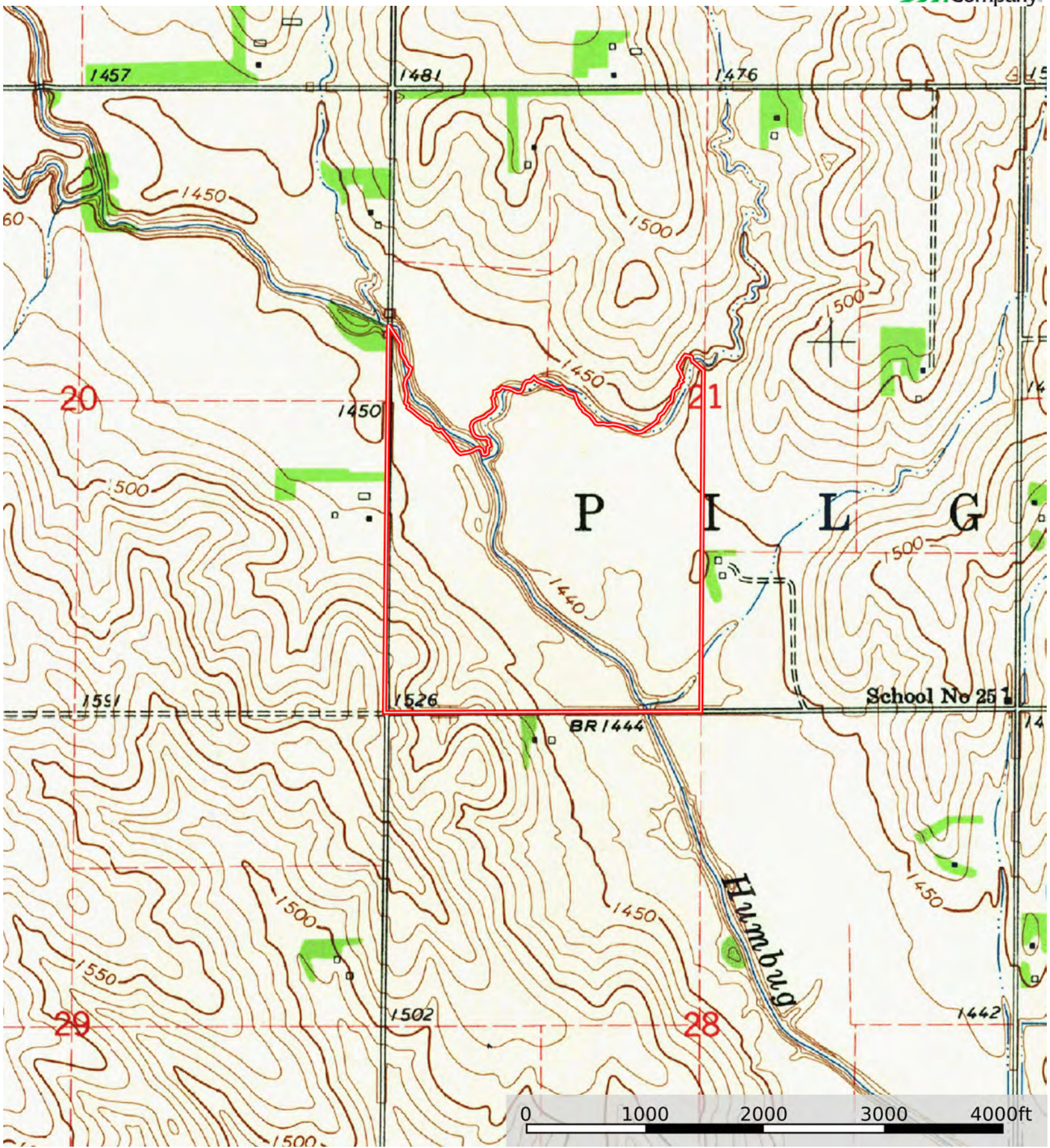
Boundary

| Boundary 157.79 ac

SOIL CODE	SOIL DESCRIPTION	ACRES	%	CPI	NCCPI	CAP
6555	Shell silty clay loam, 0 to 2 percent slopes, occasionally flooded	98.39	62.36	0	85	2w
3545	Hobbs silt loam, channeled, 0 to 2 percent slopes, frequently flooded	19.24	12.19	0	41	6w
6603	Alcester silty clay loam, 2 to 6 percent slopes	10.97	6.95	91	76	2e
6778	Nora-Crofton complex, 6 to 11 percent slopes, eroded	10.06	6.38	0	66	3e
3561	Hobbs silt loam, 0 to 2 percent slopes, occasionally flooded, cool	8.63	5.47	0	79	2w
6767	Nora silty clay loam, 6 to 11 percent slopes	8	5.07	0	75	3e
6811	Moody silty clay loam, 2 to 6 percent slopes	1.96	1.24	67	75	2e
6789	Crofton-Nora complex, 11 to 17 percent slopes, eroded	0.54	0.34	48	60	4e
TOTALS		157.79(*)	100%	7.32	76.75	2.61

(\*) Total acres may differ in the second decimal compared to the sum of each acreage soil. This is due to a round error because we only show the acres of each soil with two decimal.





Boundary