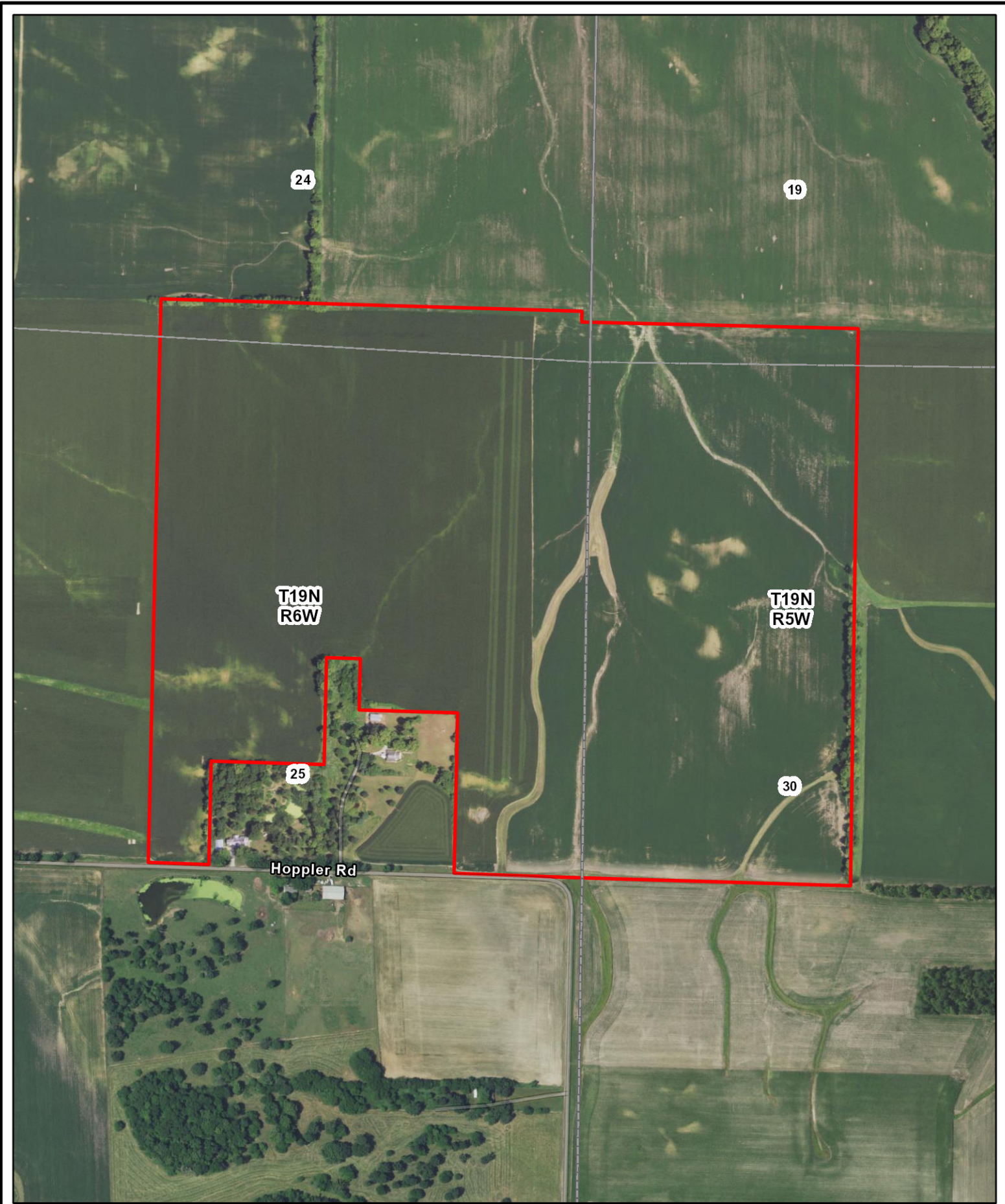


A-20604
Menard County, Illinois

Latitude: 40.0684°N
Longitude: 89.7182°W
Imagery Source: USDA NAIP
Soil Data Source: USDA NRCS
Boundaries are Approximate



24

19

T19N
R6W

T19N
R5W

25

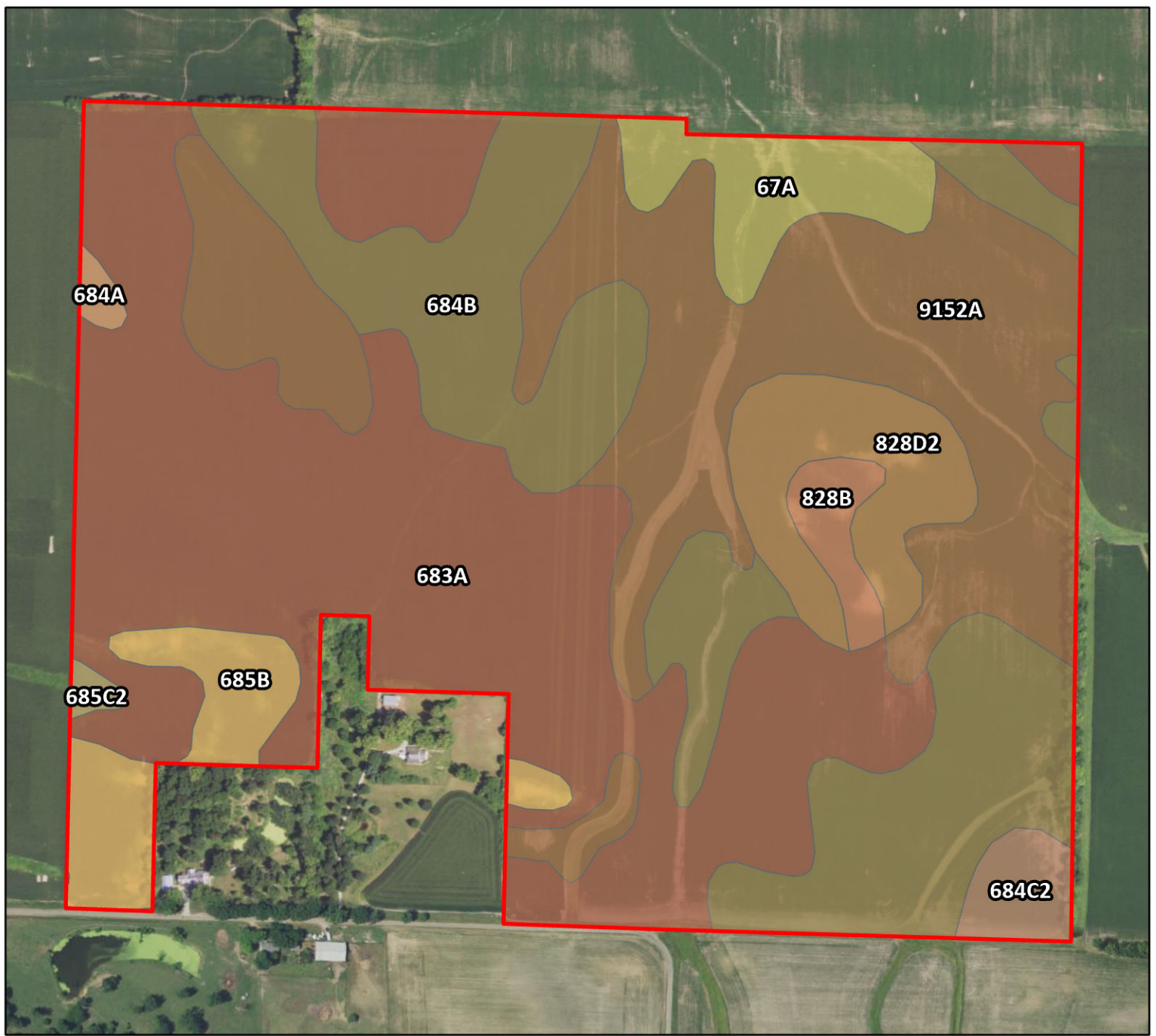
30

Hoppler Rd



A-20604
Menard County, Illinois

Latitude: 40.0731°N
Longitude: 89.717°W
Imagery Source: USDA NAIP
Soil Data Source: USDA NRCS
Boundaries are Approximate

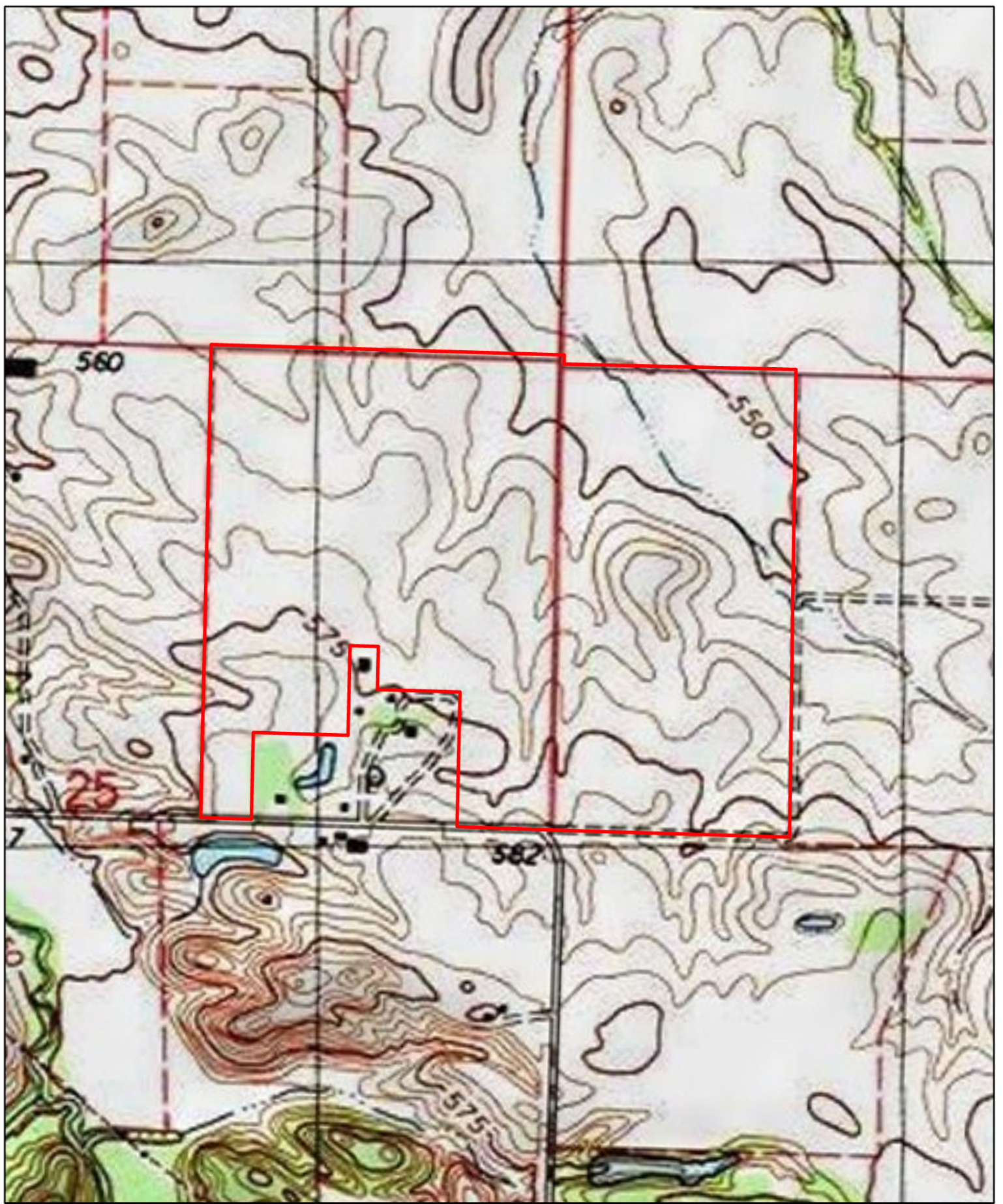


Map Symbol	Name	Non-IRR LCC	PRODUCTIVITY INDEX	BEANS	CORN	ACRES
683A	Lawndale silt loam, 0 to 2 percent slopes	Iw	144	62	197	67.4
9152A	Drummer silty clay loam, stream terrace, 0 to 2 percent slopes	IIw	144	63	195	45
684B	Broadwell silt loam, 2 to 5 percent slopes	IIE	137	58	186	39.9
828D2	Broadwell-Sparta complex, 7 to 15 percent slopes, eroded	IIIe	107	45	142	9.4
685B	Middletown silt loam, 2 to 5 percent slopes	IIE	116	49	160	7.8
67A	Harpster silty clay loam, 0 to 2 percent slopes	IIw	133	57	182	7.1
684C2	Broadwell silt loam, 5 to 10 percent slopes, eroded	IIIe	128	55	175	2.6
828B	Broadwell-Sparta complex, 1 to 7 percent slopes	IIE	119	50	158	2.5
684A	Broadwell silt loam, 0 to 2 percent slopes	Iw	138	59	188	0.6
685C2	Middletown silt loam, 5 to 10 percent slopes, eroded	IIIe	109	46	151	0.5
TOTAL			138.3	59.4	188.1	183



A-20604
Menard County, Illinois

Latitude: 40.0733°N
Longitude: 89.717°W
Imagery Source: USDA NAIP
Soil Data Source: USDA NRCS
Boundaries are Approximate



A-20604
Menard County, Illinois

Latitude: 40.0731°N
Longitude: 89.717°W
Imagery Source: USDA NAIP
Soil Data Source: USDA NRCS
Boundaries are Approximate