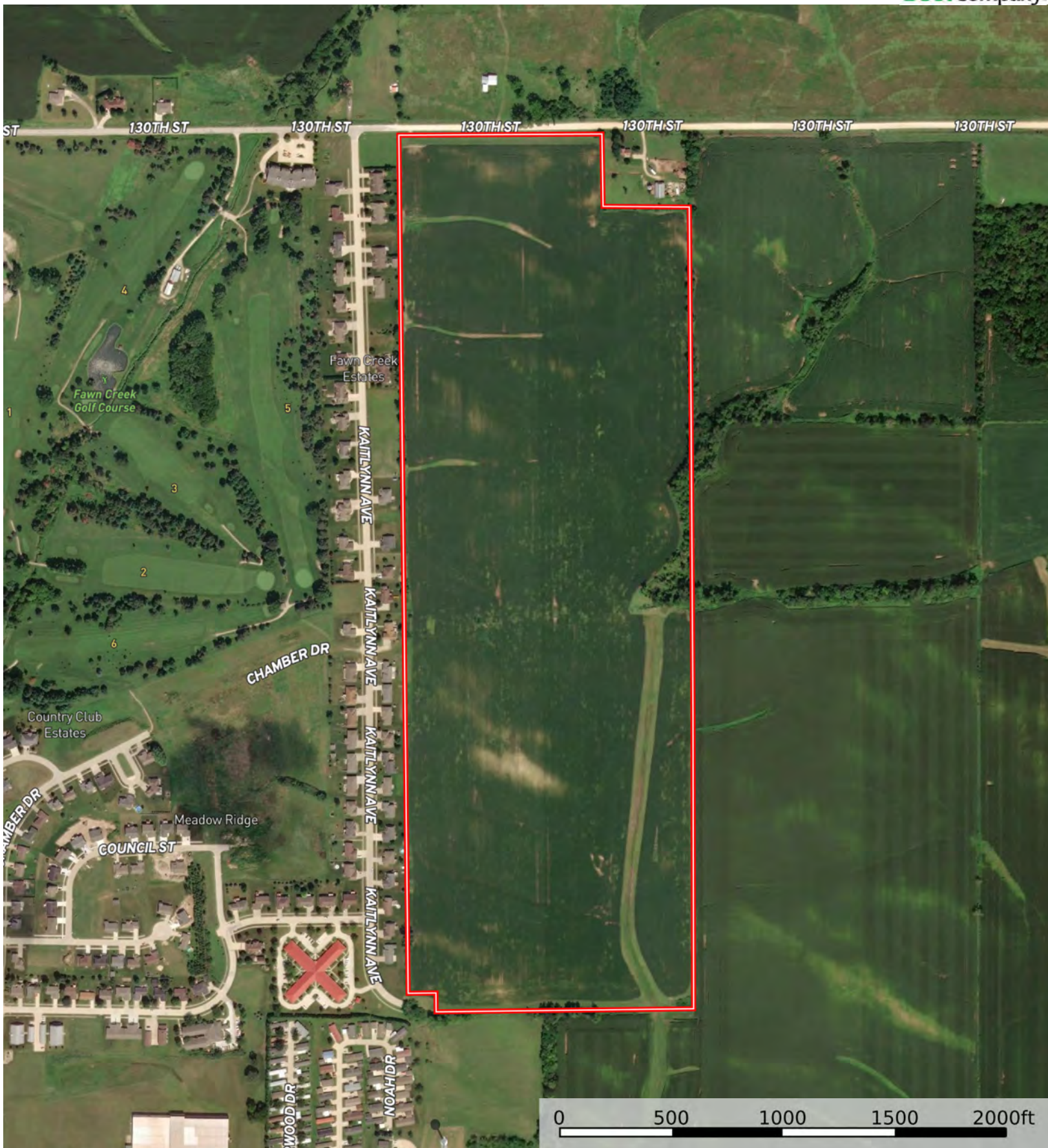

 Boundary



 Boundary



Boundary

|  Boundary 113.89 ac

SOIL CODE	SOIL DESCRIPTION	ACRES	%	CSR2	CPI	NCCPI	CAP
11B	Colo-Ely complex, 0 to 5 percent slopes	33.06	29.04	86.0	0	92	2w
771C	Waubeek silt loam, 5 to 9 percent slopes	20.71	18.19	85.0	0	84	3e
P162C	Downs silt loam, paha, 5 to 9 percent slopes	11.28	9.91	85.0	0	87	3e
119	Muscatine silt loam, 1 to 3 percent slopes	8.77	7.7	95.0	0	94	1
171C	Bassett loam, 5 to 9 percent slopes	8.54	7.5	80.0	0	86	3e
120B	Tama silt loam, 2 to 5 percent slopes	8.43	7.4	95.0	0	98	2e
171D2	Bassett loam, 9 to 14 percent slopes, eroded	4.65	4.08	54.0	0	78	3e
293C	Chelsea-Fayette-Lamont complex, 2 to 9 percent slopes	4.42	3.88	44.0	0	67	4s
293D	Chelsea-Fayette-Lamont complex, 9 to 14 percent slopes	3.89	3.42	25.0	0	63	6s
171C2	Bassett loam, 5 to 9 percent slopes, eroded	3.11	2.73	77.0	0	81	3e
771B	Waubeek silt loam, 2 to 5 percent slopes	2.5	2.2	89.0	0	85	2e
480D2	Orwood silt loam, 9 to 14 percent slopes, moderately eroded	1.66	1.46	52.0	0	85	3e
480E2	Orwood silt loam, 14 to 18 percent slopes, moderately eroded	1.56	1.37	40.0	0	81	4e
171B	Bassett loam, 2 to 5 percent slopes	1.11	0.97	85.0	0	87	2e
P162D	Downs silt loam, paha, 9 to 14 percent slopes	0.1	0.09	57.0	0	83	3e
174B	Bolan loam, 2 to 5 percent slopes	0.07	0.06	64.0	0	85	2s
P162C2	Downs silt loam, paha, 5 to 9 percent slopes, eroded	0.03	0.03	82.0	0	81	4e
TOTALS		113.89(*)	100%	80.27	-	86.92	2.6









(*) Total acres may differ in the second decimal compared to the sum of each acreage soil. This is due to a round error because we only show the acres of each soil with two decimal.

Capability Legend

Increased Limitations and Hazards

Decreased Adaptability and Freedom of Choice Users

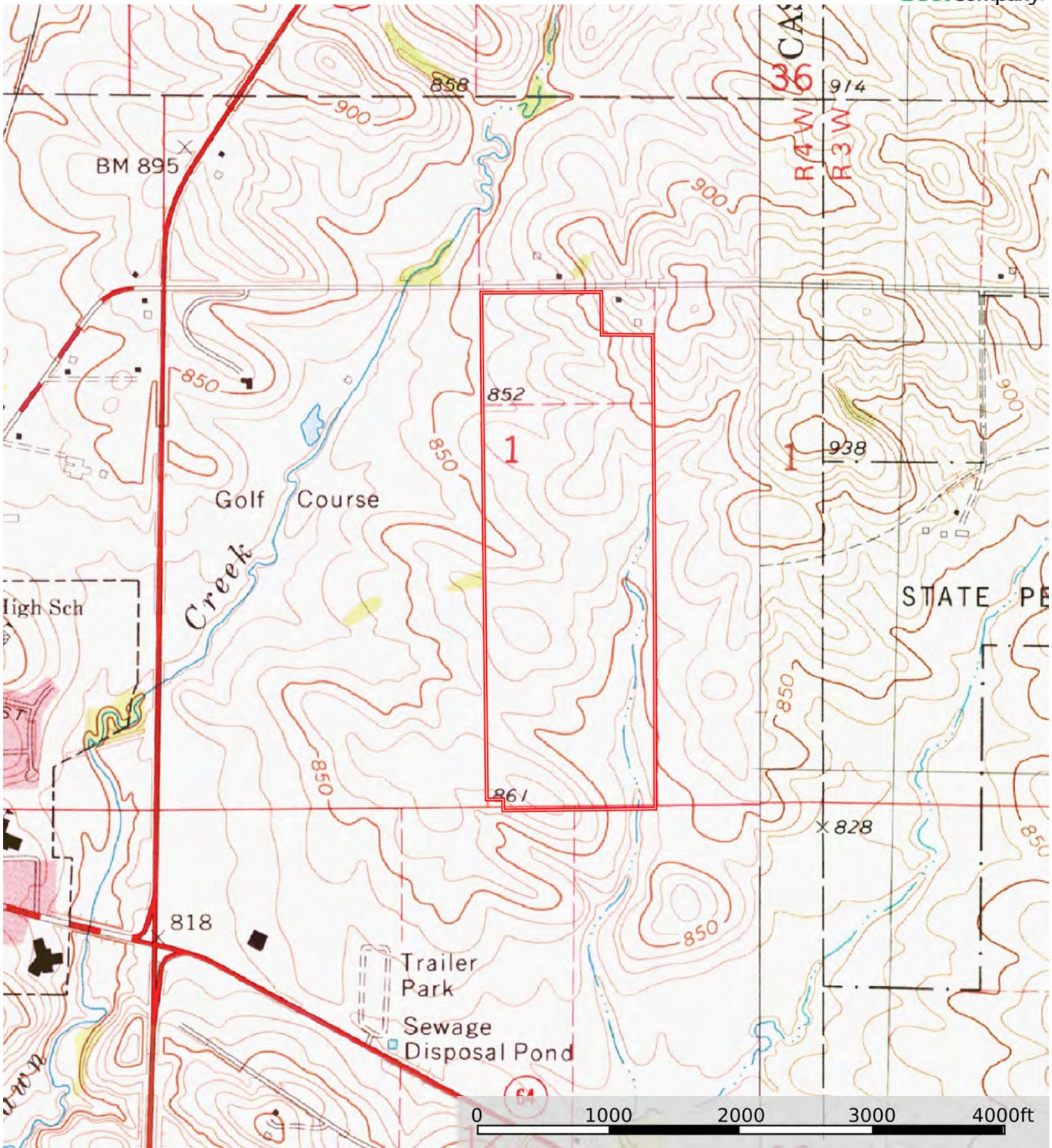
Land, Capability

								
	1	2	3	4	5	6	7	8
'Wild Life'	•	•	•	•	•	•	•	•
Forestry	•	•	•	•	•	•	•	
Limited	•	•	•	•	•	•	•	
Moderate	•	•	•	•	•	•		
Intense	•	•	•	•	•			
Limited	•	•	•	•				
Moderate	•	•	•					
Intense	•	•						
Very Intense	•							

Grazing Cultivation

(c) climatic limitations (e) susceptibility to erosion

(s) soil limitations within the rooting zone (w) excess of water



 Boundary