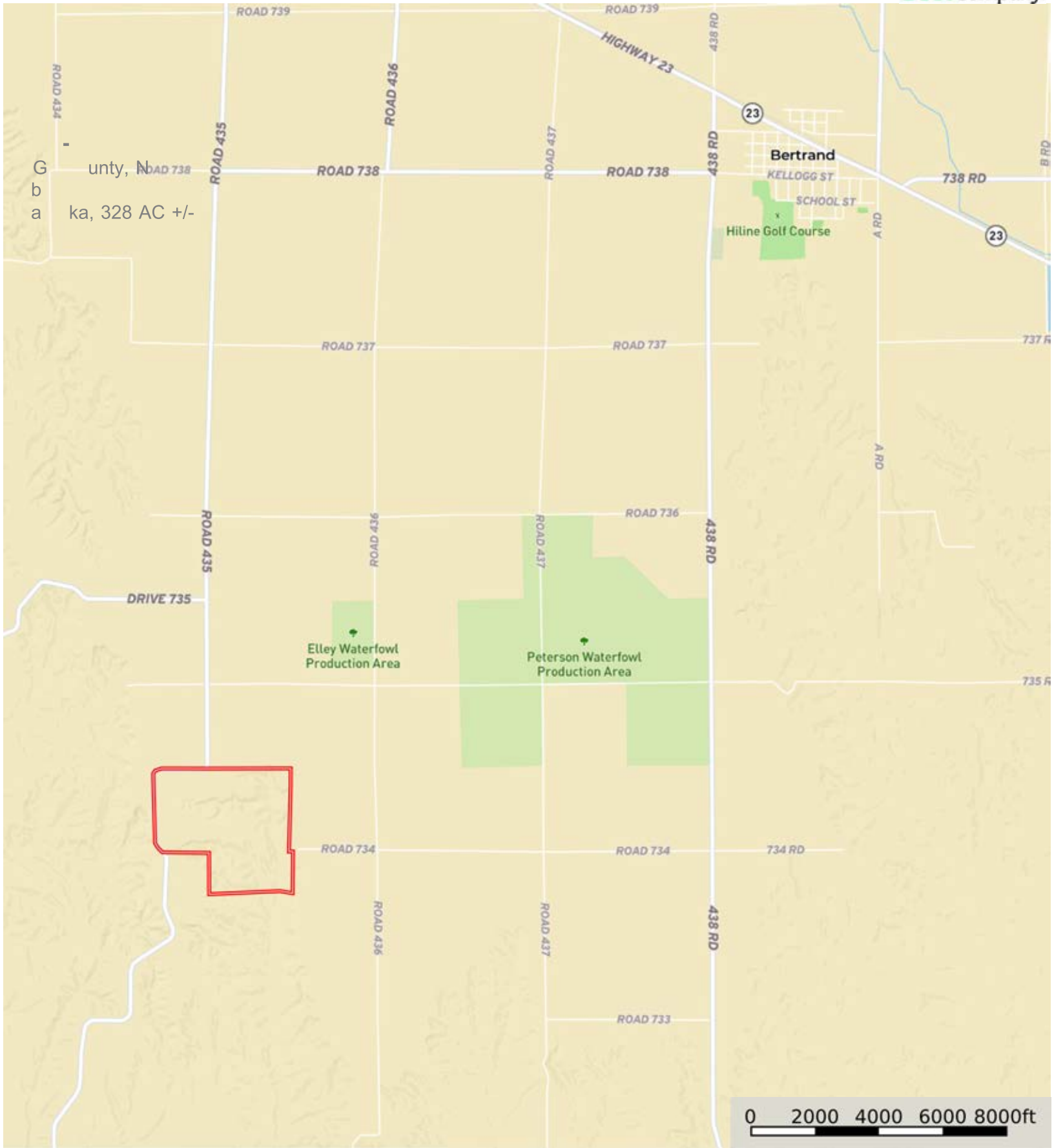


Gosper County, Nebraska, 328 AC +/-




Boundary



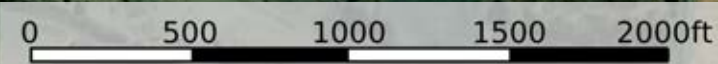
-2 1
1 G
7
County, N
b
a
328 AC +/-

0 500 1000 1500 2000ft

 Boundary

1 G
78
C
ba

County, N
ka, 328 AC +/-



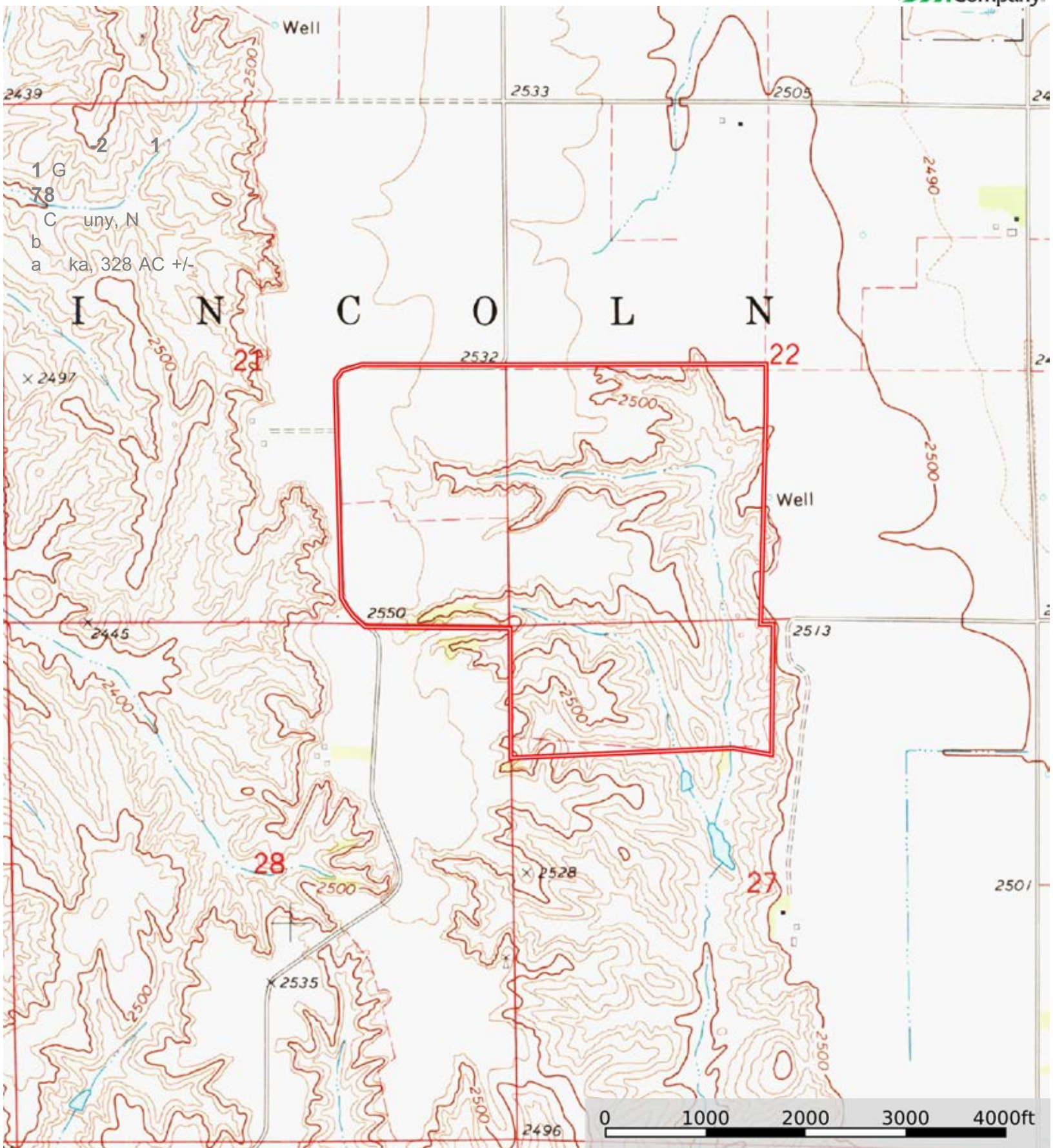
Boundary

|  Boundary 334.02 ac

SOIL CODE	SOIL DESCRIPTION	ACRES	%	CPI	NCCPI	CAP
2560	Coly-Uly-Hobbs silt loams, 3 to 60 percent slopes	185.15	55.43	0	28	7e
2667	Holdrege silt loam, 0 to 1 percent slopes	79.13	23.69	0	81	2e
8840	Hall silt loam, 0 to 1 percent slopes	50.04	14.98	0	74	2c
2830	Uly-Coly silt loams, 11 to 30 percent slopes	10.97	3.28	0	64	6e
2820	Uly silt loam, 6 to 11 percent slopes	5.98	1.79	0	76	4e
2668	Holdrege silt loam, 1 to 3 percent slopes	1.82	0.54	0	81	2e
2675	Holdrege silt loam, 3 to 7 percent slopes, plains and breaks	0.93	0.28	0	77	3e
TOTALS		334.02(*)	100%	-	49.92	4.94

(*) Total acres may differ in the second decimal compared to the sum of each acreage soil. This is due to a round error because we only show the acres of each soil with two decimal.





Boundary