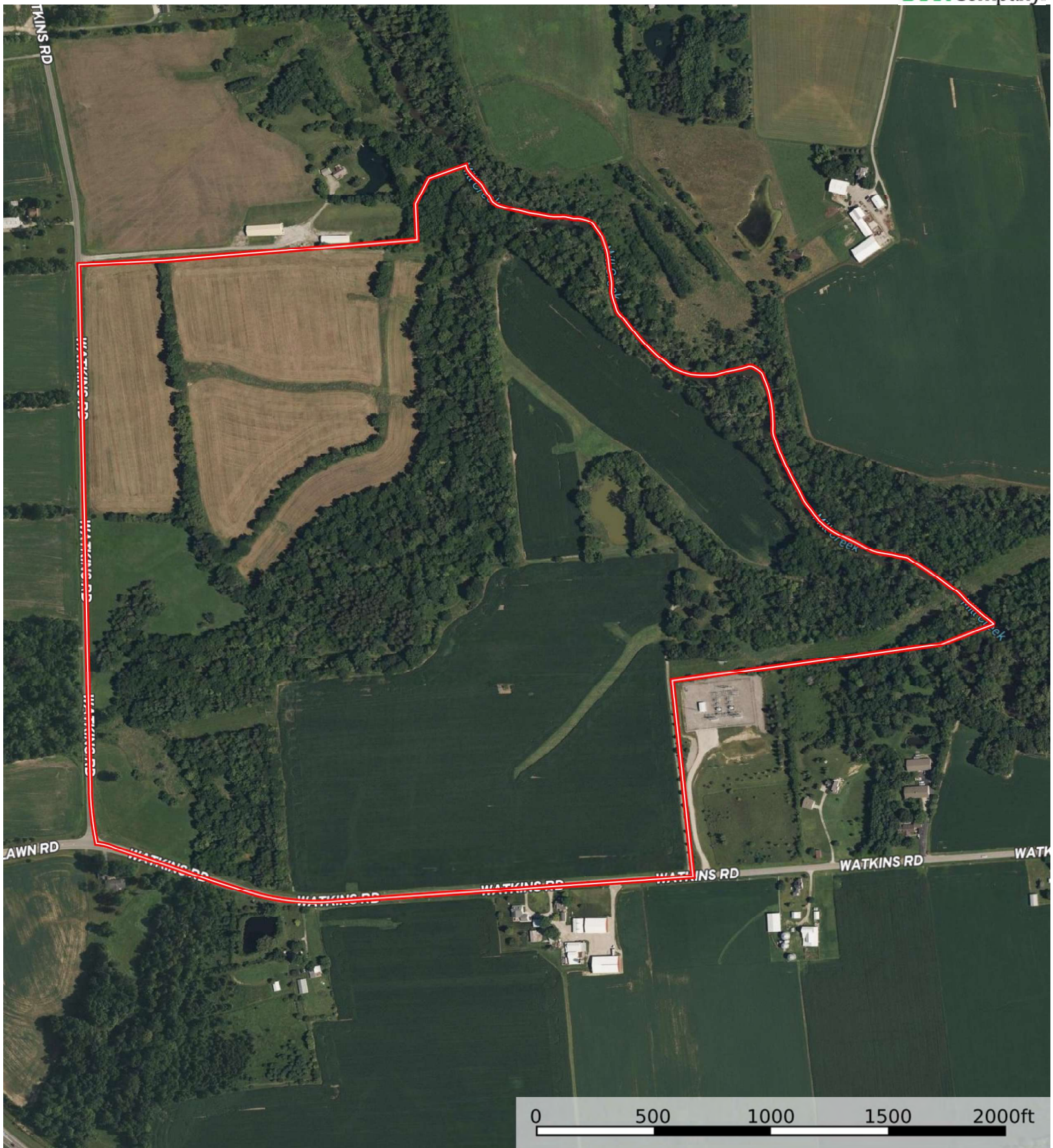
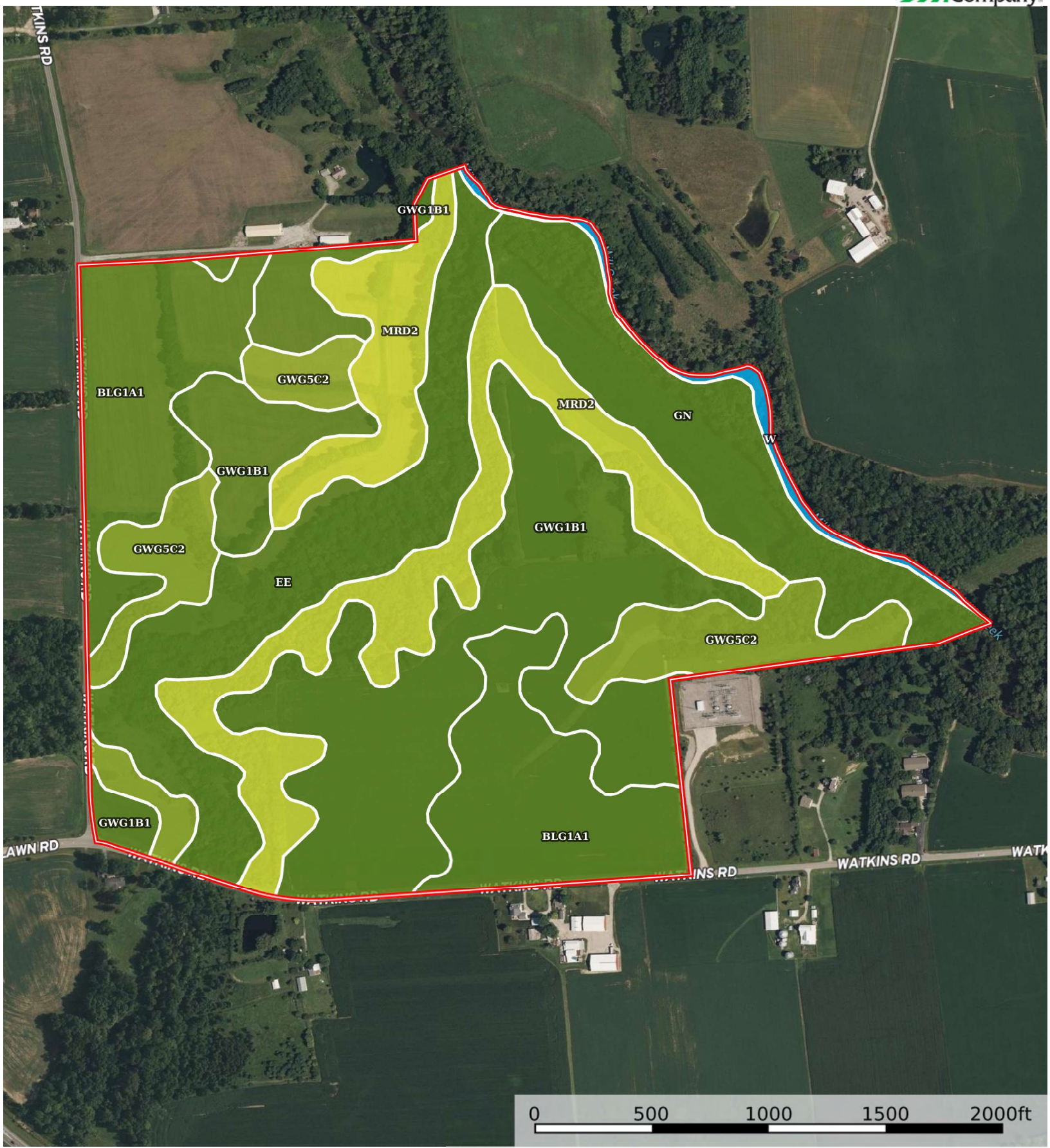


Boundary

Union County, Ohio, 175.27 AC +/-



The information contained herein was obtained from sources deemed to be reliable.
Land id™ Services makes no warranties or guarantees as to the completeness or accuracy thereof.



Boundary

 Boundary 180.37 ac

SOIL CODE	SOIL DESCRIPTION	ACRES	%	CPI	NCCPI	CAP
Gwg1B1	Glynwood silt loam, ground moraine, 2 to 6 percent slopes	51.71	28.67	0	67	2e
Blg1A1	Blount silt loam, ground moraine, 0 to 2 percent slopes	32.83	18.2	0	69	2w
MrD2	Morley silt loam, 12 to 18 percent slopes, eroded	31.27	17.34	0	57	4e
Ee	Eel silt loam, 0 to 2 percent slopes, occasionally flooded	24.65	13.67	0	93	2w
Gn	Genesee silt loam, 0 to 2 percent slopes, occasionally flooded	19.92	11.04	0	89	2w
Gwg5C2	Glynwood clay loam, ground moraine, 6 to 12 percent slopes, eroded	17.94	9.95	65	56	3e
W	Water	2.05	1.14	0	-	-
TOTALS		180.37(*)	100%	6.47	69.76	2.45









(*) Total acres may differ in the second decimal compared to the sum of each acreage soil. This is due to a round error because we only show the acres of each soil with two decimal.

Capability Legend

Increased Limitations and Hazards

Decreased Adaptability and Freedom of Choice Users

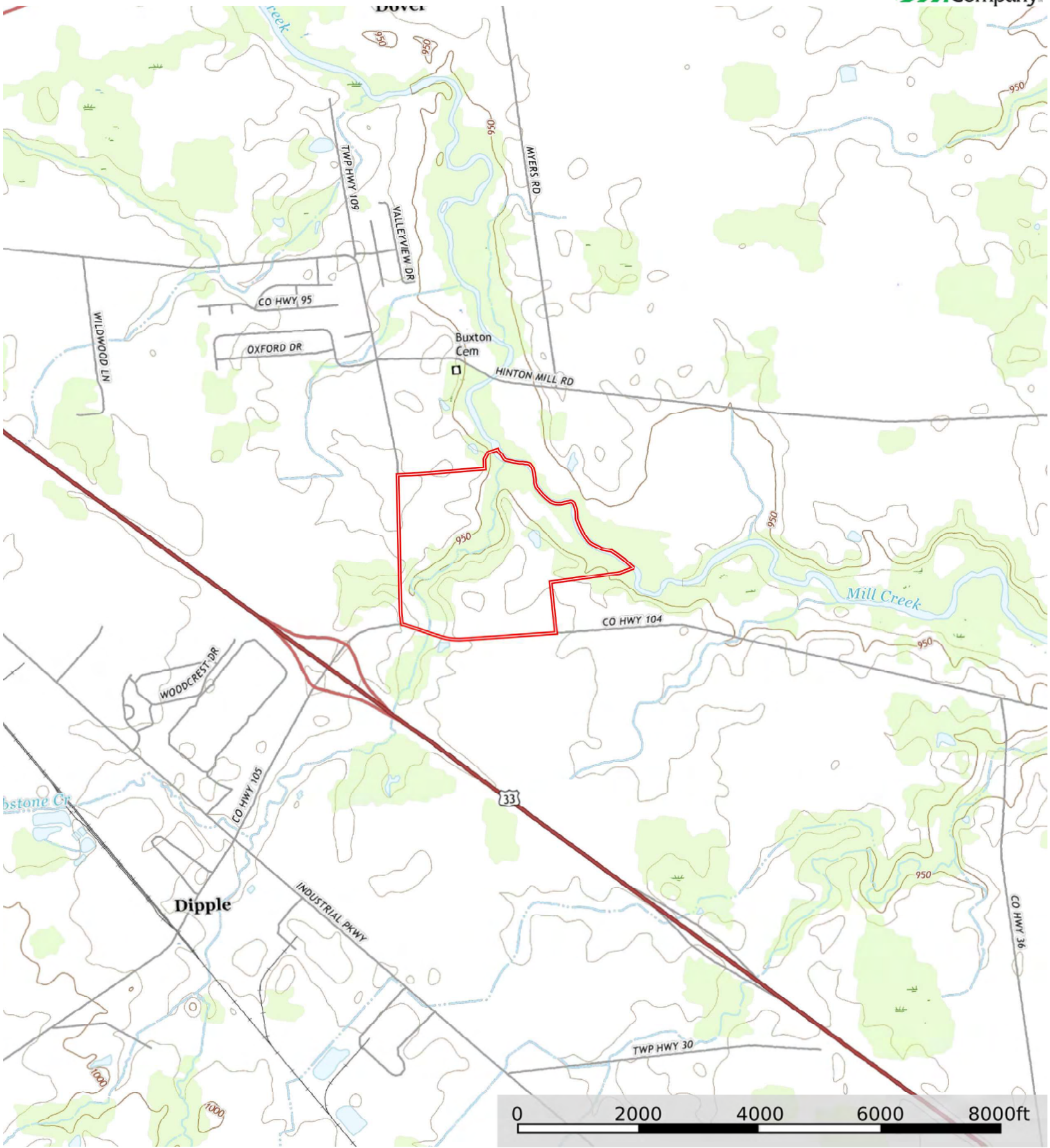
Land, Capability

								
	1	2	3	4	5	6	7	8
'Wild Life'	•	•	•	•	•	•	•	•
Forestry	•	•	•	•	•	•	•	
Limited	•	•	•	•	•	•	•	
Moderate	•	•	•	•	•	•		
Intense	•	•	•	•	•			
Limited	•	•	•	•				
Moderate	•	•	•					
Intense	•	•						
Very Intense	•							

Grazing Cultivation

(c) climatic limitations (e) susceptibility to erosion

(s) soil limitations within the rooting zone (w) excess of water



Boundary