



Farmers
National
Company™

www.FarmersNational.com

A-21395



SCAN THE QR CODE
FOR MORE INFO!



LAND FOR SALE

240.9± Acres, Clark County, Kansas

OFFERED AT
\$390,000

Highlights:

- Mostly tillable
- High percentage of class II soils (Harney Silt Loam)
- Fenced perimeter with livestock well



For additional information, please contact:

Matt Foos, AFM, Agent | (620) 255-1811
MFoos@FarmersNational.com



Garet Walker, Agent | (620) 855-0889
GWalker@FarmersNational.com

Property Information

Directions to Properties:

From Bucklin, Kansas, travel south on Highway 34 for five miles to Zane Road. Go east on Zane Road for two miles then south on 134 Road.

Property Description:

Located in Clark County just south of Bucklin, Kansas. This property features a mix of cropland and pasture and is suitable for crop production and grazing. This ground provides excellent opportunities for agricultural pursuits.

Legal Description:

North East 1/4 and the North 1/2 of the South East 1/4 of Section 14, Township 30S, Range 21W of the 6th PM.



FSA Information:

	Base	Yield
Wheat	102.9 acres	35 bushels
Grain Sorghum	37.9 acres	62 bushels

Farm Data:

Cropland	198.02 acres
Pasture	40.28 acres
Other	2.60 acres
Total	240.90 acres

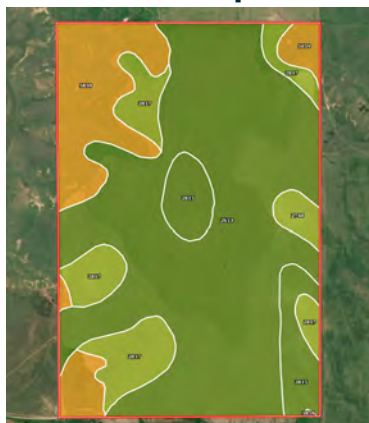
2023 Taxes:

- \$802.71

Property Location



Soil Map



SOIL CODE	SOIL DESCRIPTION	ACRES	%	CPI	NCCPI	CAP
2613	Harney silt loam, 1 to 3 percent slopes	146.02	60.68	0	69	2e
5859	Albion-Shellabarger sandy loams, 3 to 15 percent slopes	41.26	17.15	0	37	6e
2817	Uly silt loam, 3 to 6 percent slopes	30.48	12.67	0	54	3e
2815	Uly silt loam, 1 to 3 percent slopes	18.69	7.77	0	77	2e
2748	Penden clay loam, 3 to 7 percent slopes, eroded	4.19	1.74	0	56	3e
TOTALS		240.64(*)	100%	-	62.01	2.83

Information provided was obtained from sources deemed reliable, but the broker makes no guarantees as to its accuracy. All prospective buyers are urged to inspect the property, its title and to rely on their own conclusions. Seller reserves the right to refuse any or all offers submitted and may withdraw the property from offering without notice. Farmers National Company and its representatives on the reverse side are the Designated Agents for the seller.