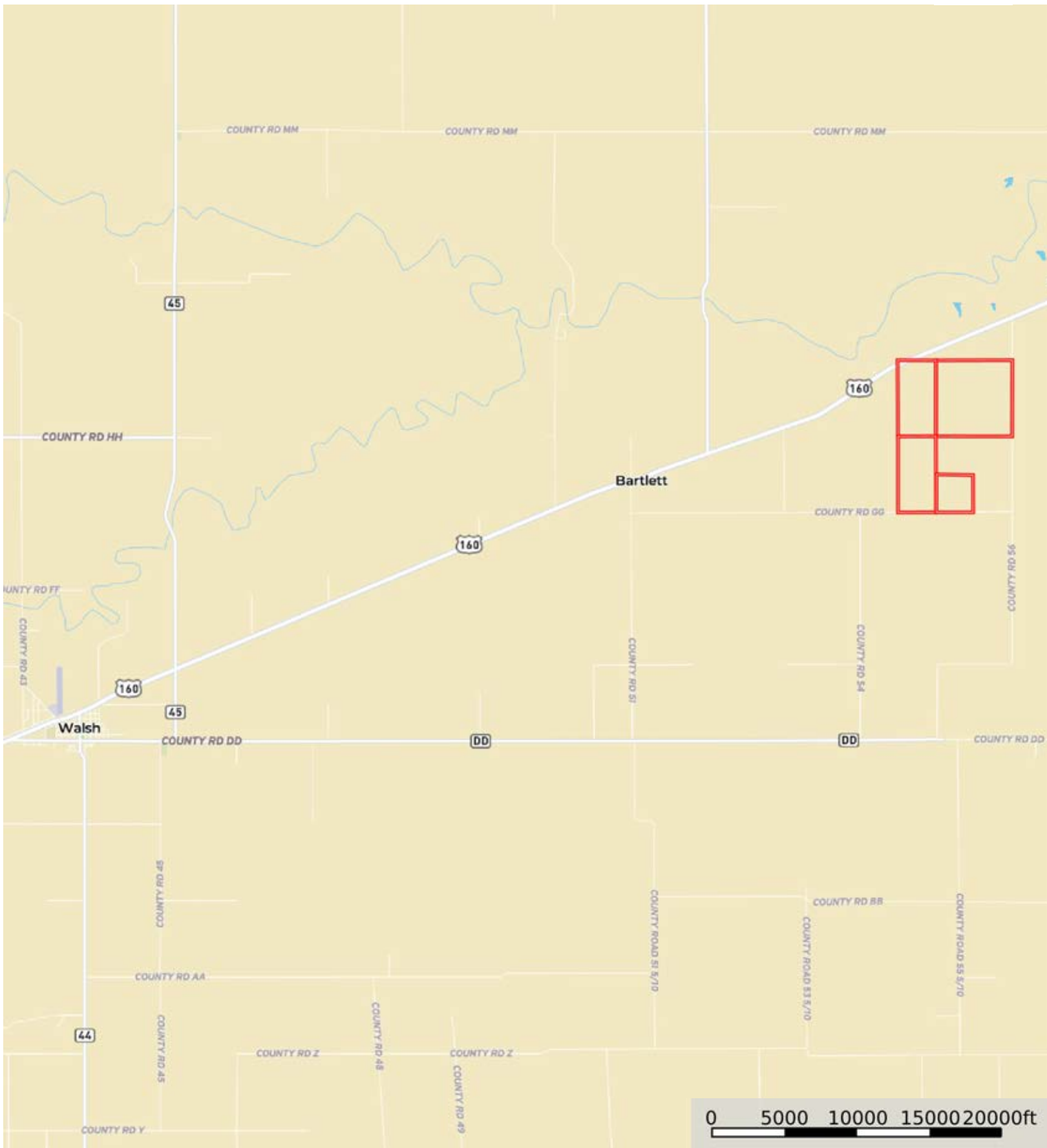

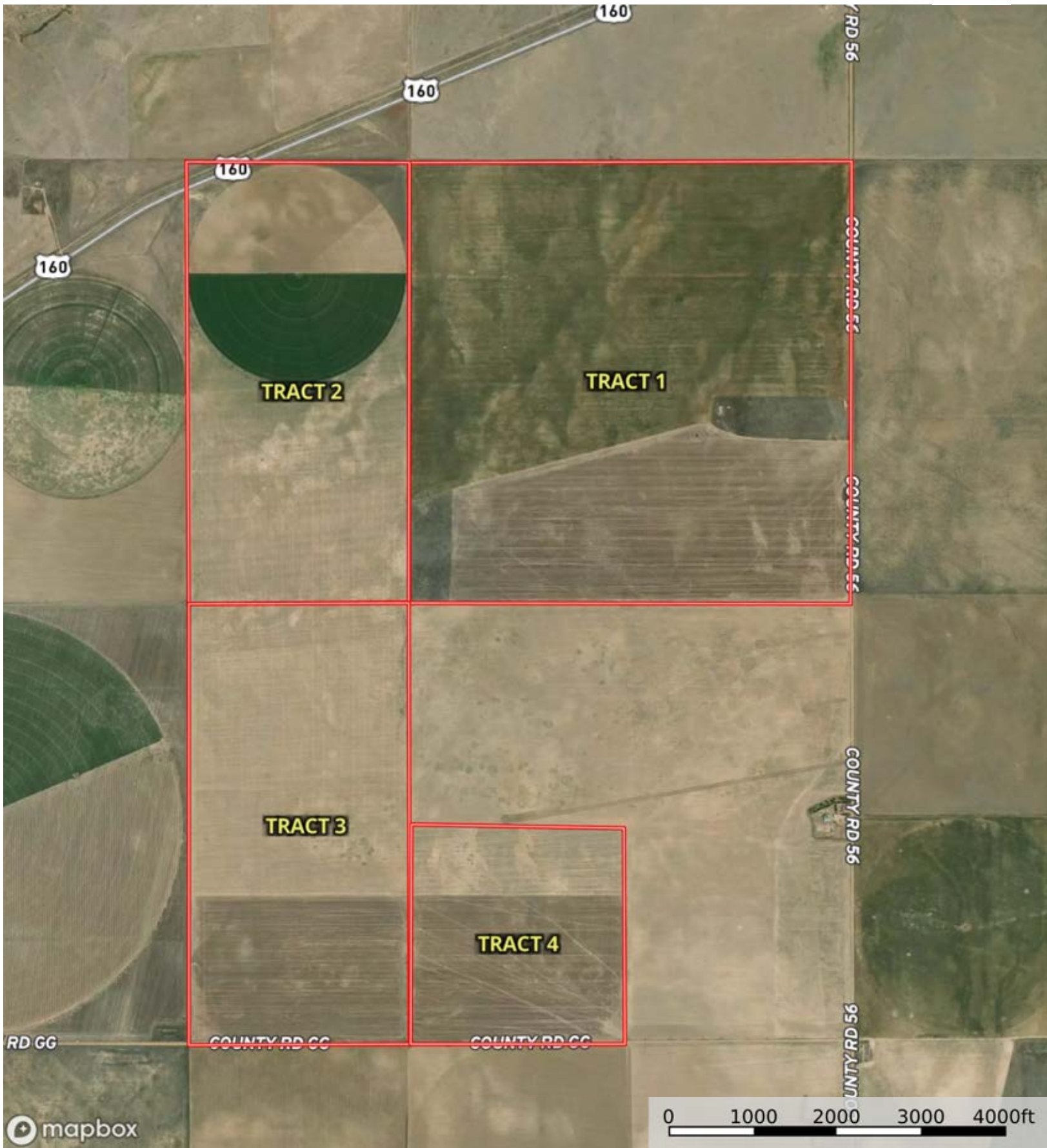



A-21501

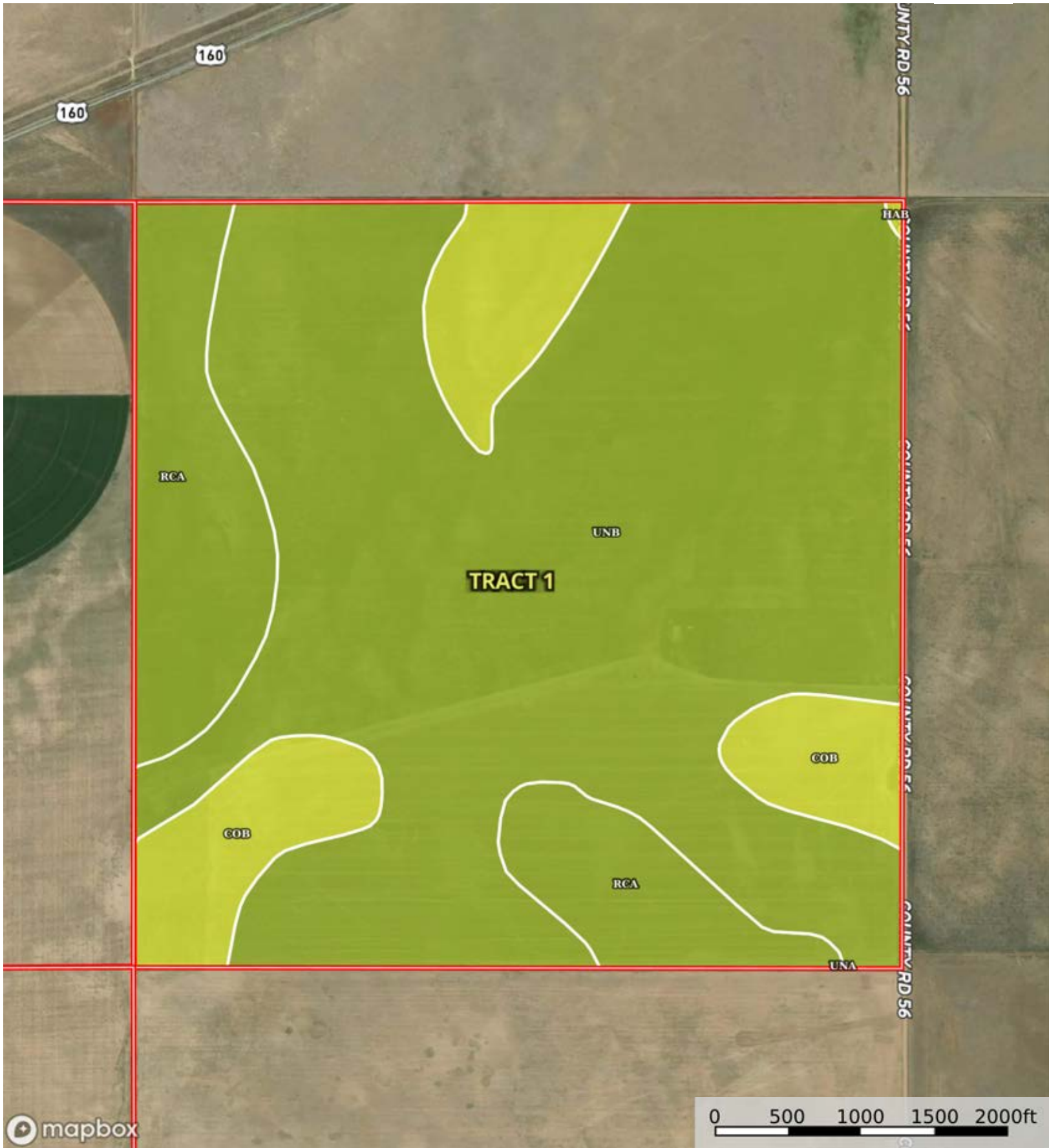
Baca County, Colorado, 1438 AC +/-



 Boundary



 Boundary



 Boundary

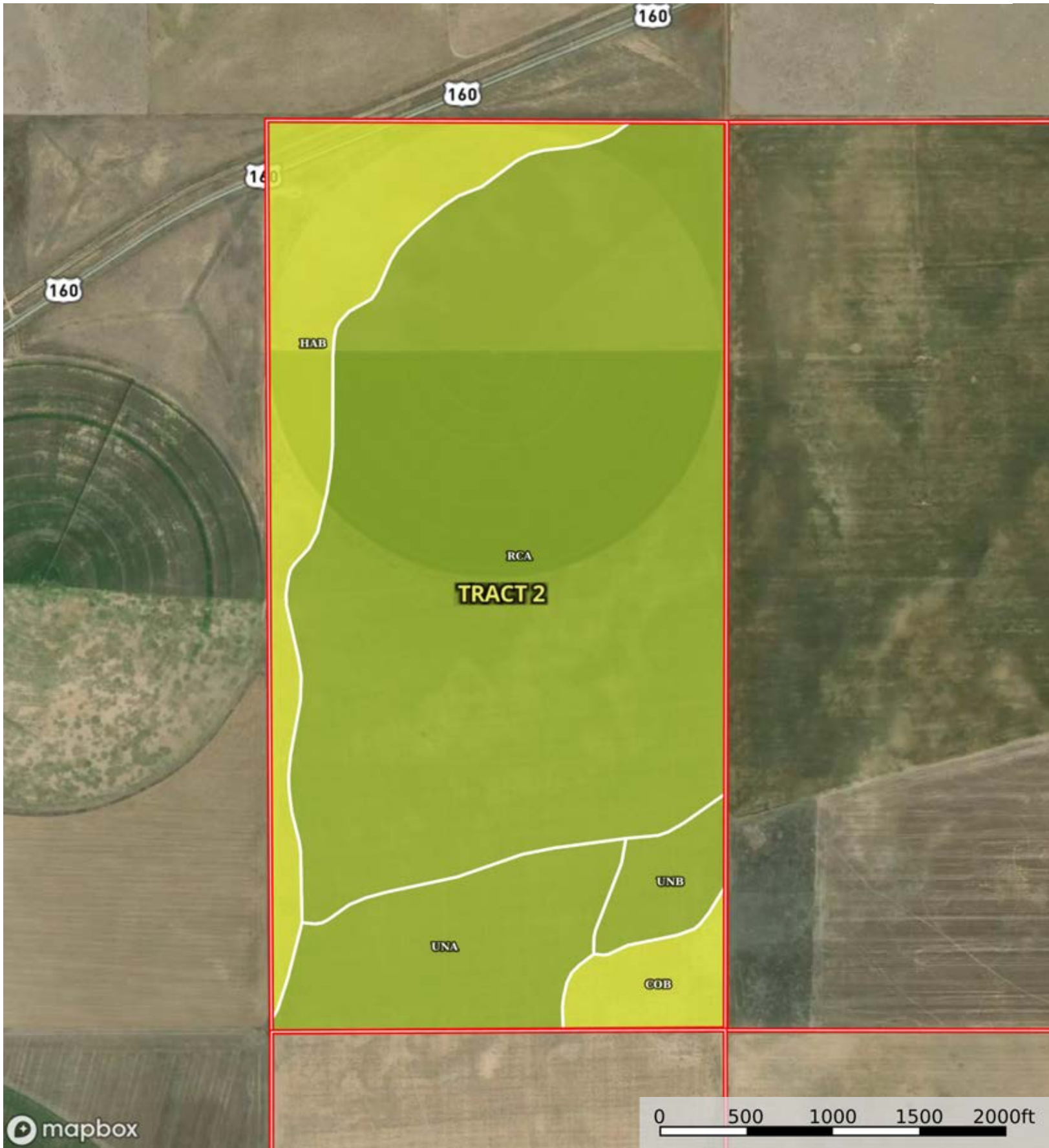


|  Boundary 639.43 ac

SOIL CODE	SOIL DESCRIPTION	ACRES	%	CPI	NCCPI	CAP
UnB	Ulysses and norka silt loams, 1 to 3 percent slopes	453.58	70.94	0	42	3e
RcA	Richfield silt loam, 0 to 1 percent slopes	98.21	15.36	0	66	3c
CoB	Colby silt loam, 1 to 3 percent slopes	56.11	8.78	0	26	4c
HaB	Fort Collins loam, warm, 1 to 3 percent slopes	31.51	4.93	0	38	4c
UnA	Ulysses and norka silt loams, 0 to 1 percent slopes	0.02	0.0	0	43	3c
TOTALS		639.43(*)	100%	-	44.09	3.14

(\*) Total acres may differ in the second decimal compared to the sum of each acreage soil. This is due to a round error because we only show the acres of each soil with two decimal.





mapbox

0 500 1000 1500 2000ft

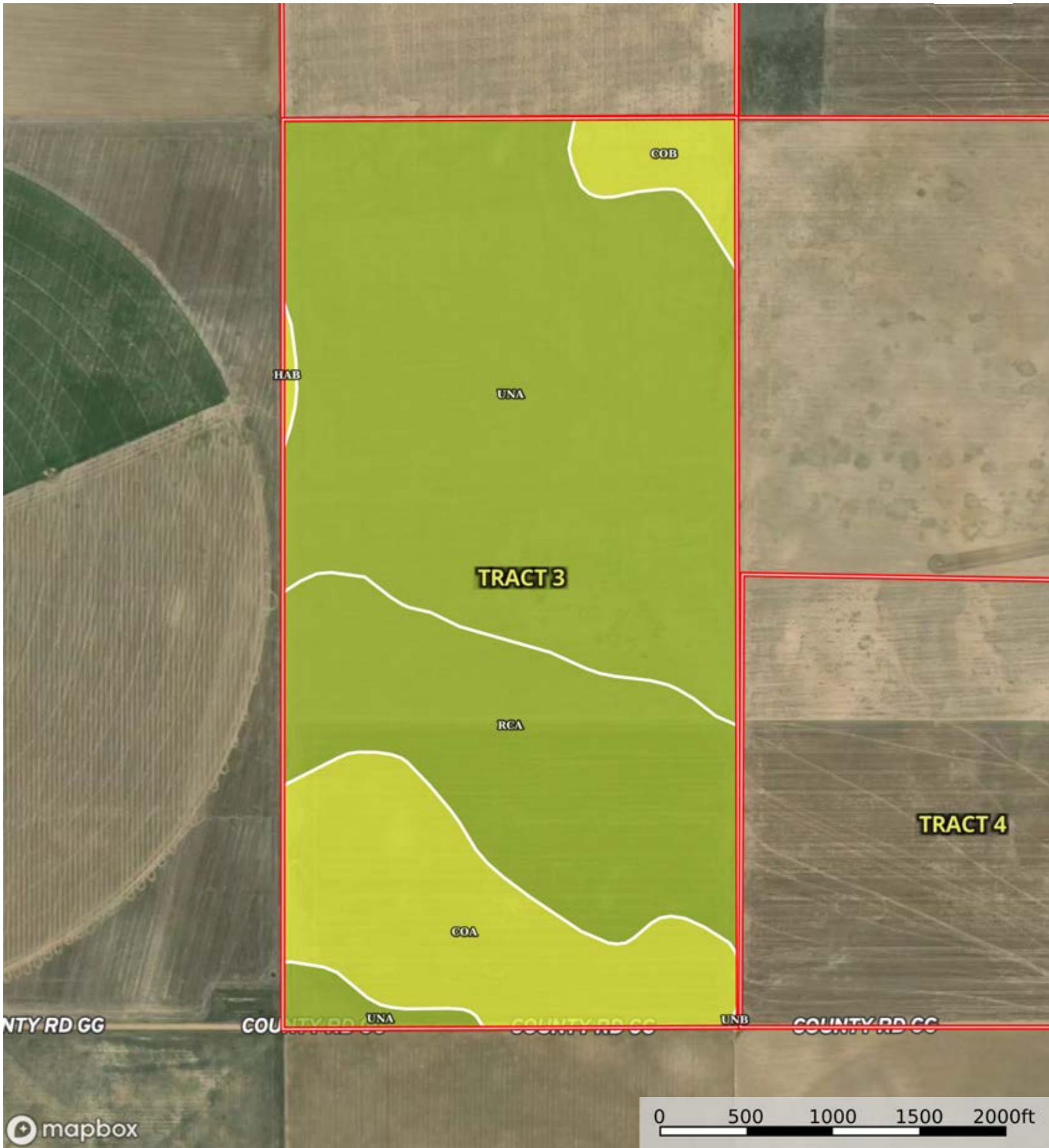
Boundary

|  Boundary 320.16 ac

SOIL CODE	SOIL DESCRIPTION	ACRES	%	CPI	NCCPI	CAP
RcA	Richfield silt loam, 0 to 1 percent slopes	216.56	67.64	0	66	3c
HaB	Fort Collins loam, warm, 1 to 3 percent slopes	47.58	14.86	0	38	4c
UnA	Ulysses and norka silt loams, 0 to 1 percent slopes	35.35	11.04	0	43	3c
CoB	Colby silt loam, 1 to 3 percent slopes	11.02	3.44	0	26	4c
UnB	Ulysses and norka silt loams, 1 to 3 percent slopes	9.65	3.01	0	42	3e
TOTALS		320.16(*)	100%	-	57.2	3.18

(\*) Total acres may differ in the second decimal compared to the sum of each acreage soil. This is due to a round error because we only show the acres of each soil with two decimal.





 Boundary



|  Boundary 318.82 ac

SOIL CODE	SOIL DESCRIPTION	ACRES	%	CPI	NCCPI	CAP
UnA	Ulysses and norka silt loams, 0 to 1 percent slopes	176.02	55.21	0	43	3c
RcA	Richfield silt loam, 0 to 1 percent slopes	76.2	23.9	0	66	3c
CoA	Colby silt loam, 0 to 1 percent slopes	54.55	17.11	0	26	4c
CoB	Colby silt loam, 1 to 3 percent slopes	10.87	3.41	0	26	4c
HaB	Fort Collins loam, warm, 1 to 3 percent slopes	1.09	0.34	0	38	4c
UnB	Ulysses and norka silt loams, 1 to 3 percent slopes	0.09	0.03	0	42	3e
TOTALS		318.82(*)	100%	-	44.99	3.21

(\*) Total acres may differ in the second decimal compared to the sum of each acreage soil. This is due to a round error because we only show the acres of each soil with two decimal.





A-21501

Baca County, Colorado, 1438 AC +/-



mapbox

0 200 400 600 800ft

Boundary



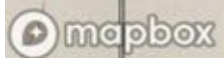
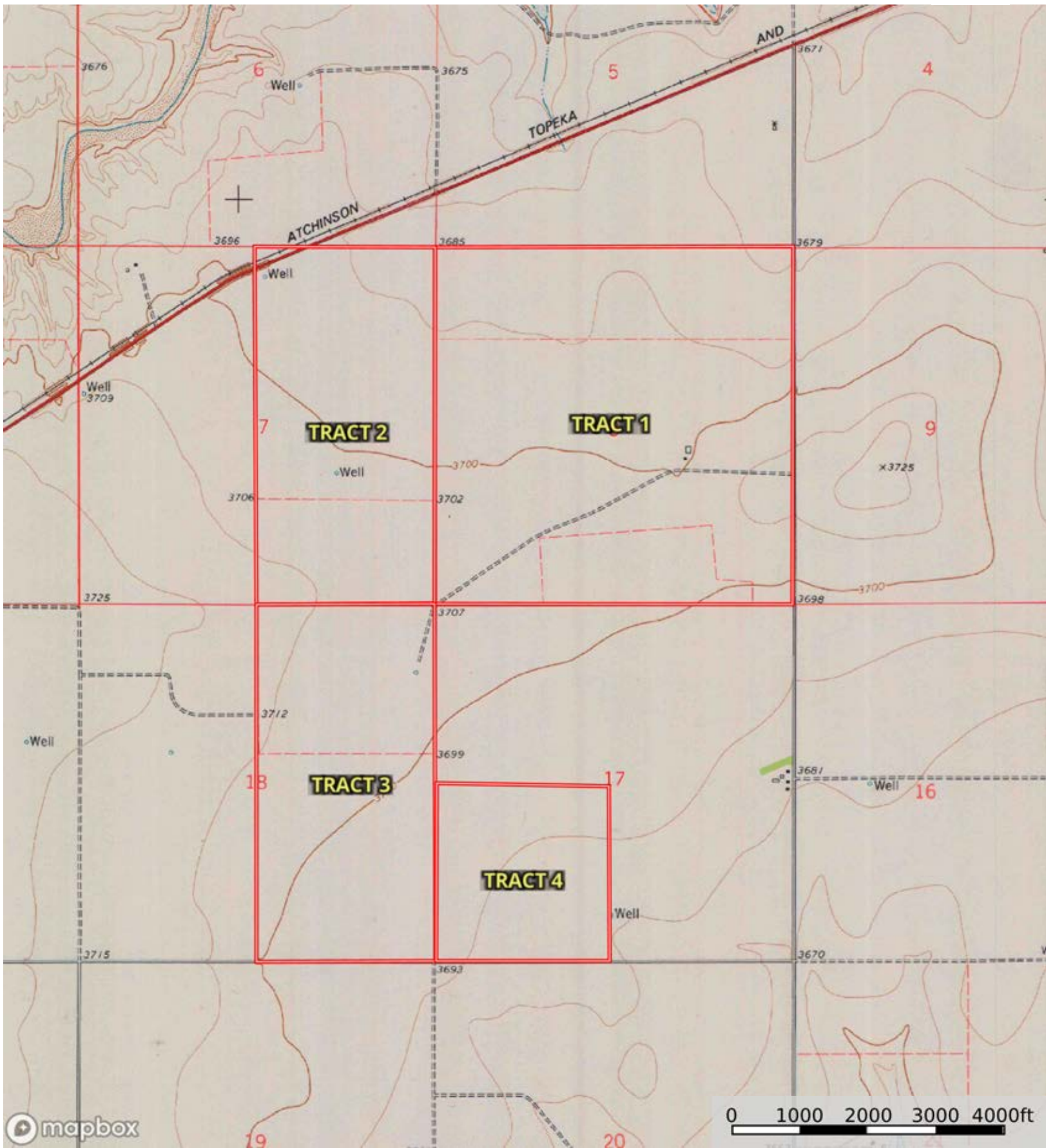
The information contained herein was obtained from sources deemed to be reliable. Land id™ Services makes no warranties or guarantees as to the completeness or accuracy thereof.

|  Boundary 152.33 ac

SOIL CODE	SOIL DESCRIPTION	ACRES	%	CPI	NCCPI	CAP
UnA	Ulysses and norka silt loams, 0 to 1 percent slopes	65.45	42.97	0	43	3c
RcA	Richfield silt loam, 0 to 1 percent slopes	47.53	31.2	0	66	3c
UnB	Ulysses and norka silt loams, 1 to 3 percent slopes	21.74	14.27	0	42	3e
HaB	Fort Collins loam, warm, 1 to 3 percent slopes	17.56	11.53	0	38	4c
CoA	Colby silt loam, 0 to 1 percent slopes	0.05	0.03	0	26	4c
TOTALS		152.3 3(*)	100%	-	49.46	3.12

(\*) Total acres may differ in the second decimal compared to the sum of each acreage soil. This is due to a round error because we only show the acres of each soil with two decimal.





Boundary